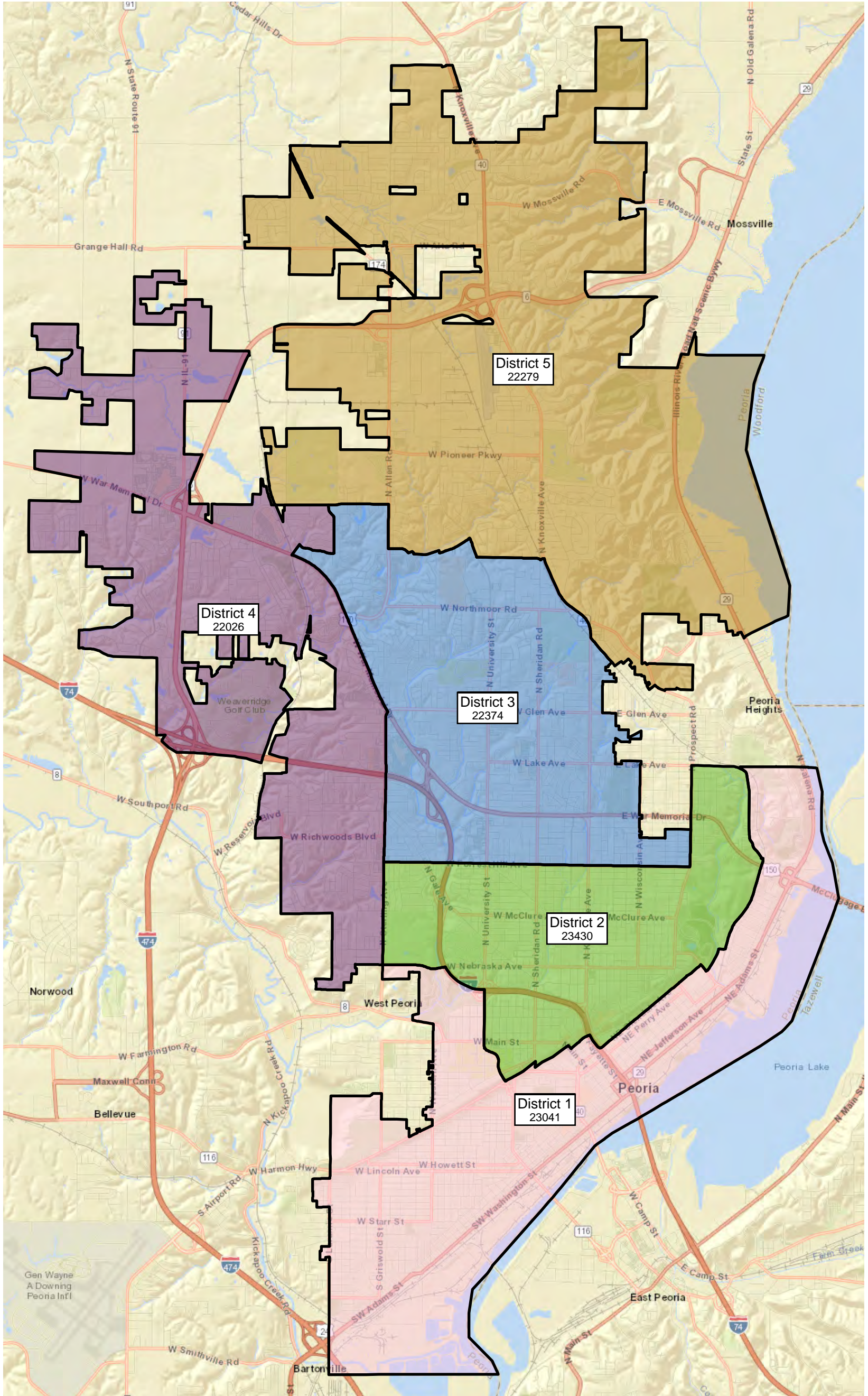
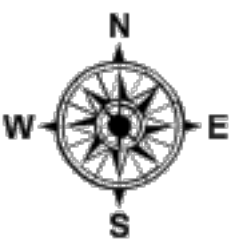
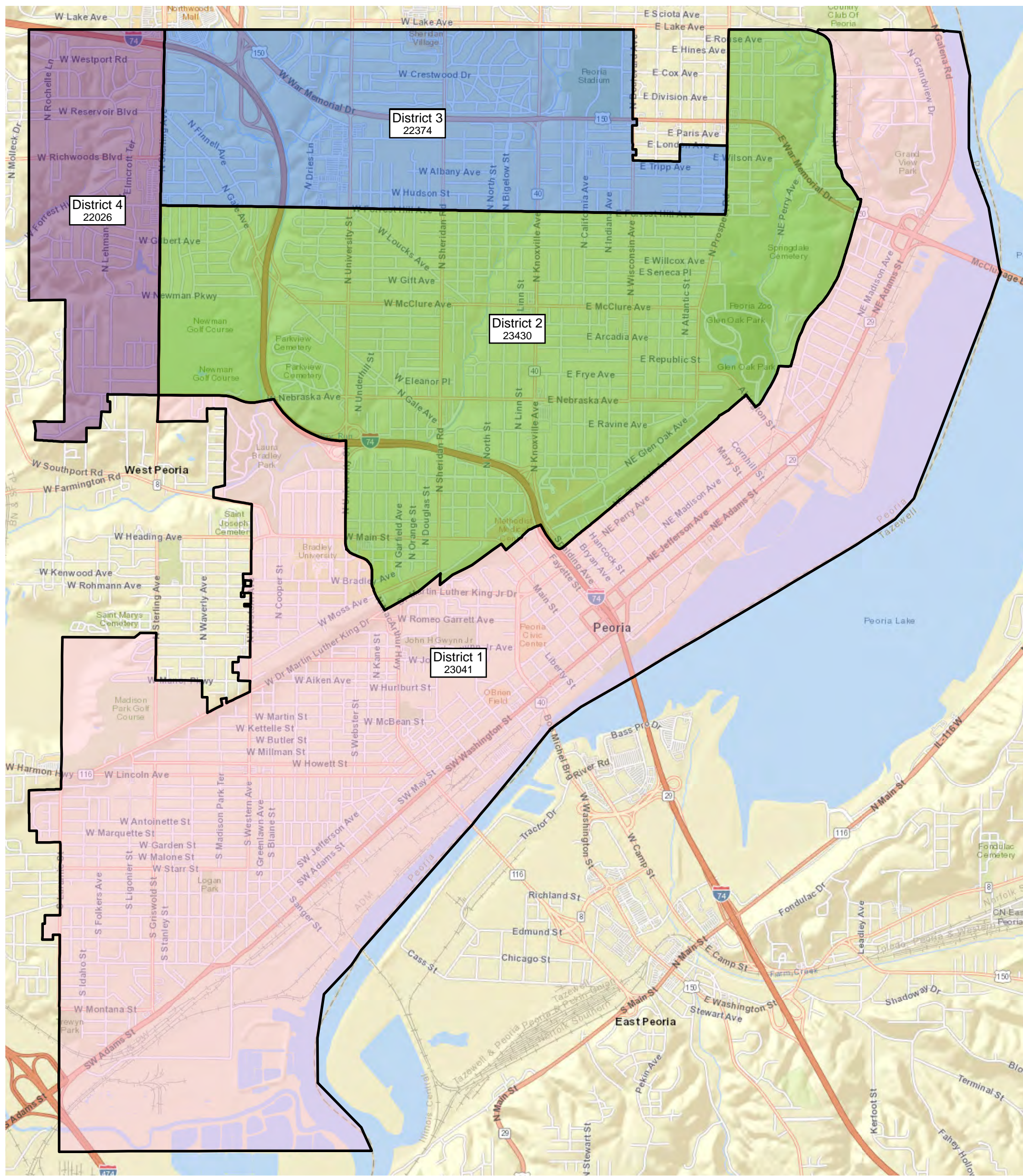
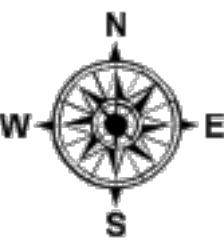
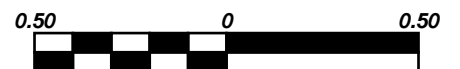


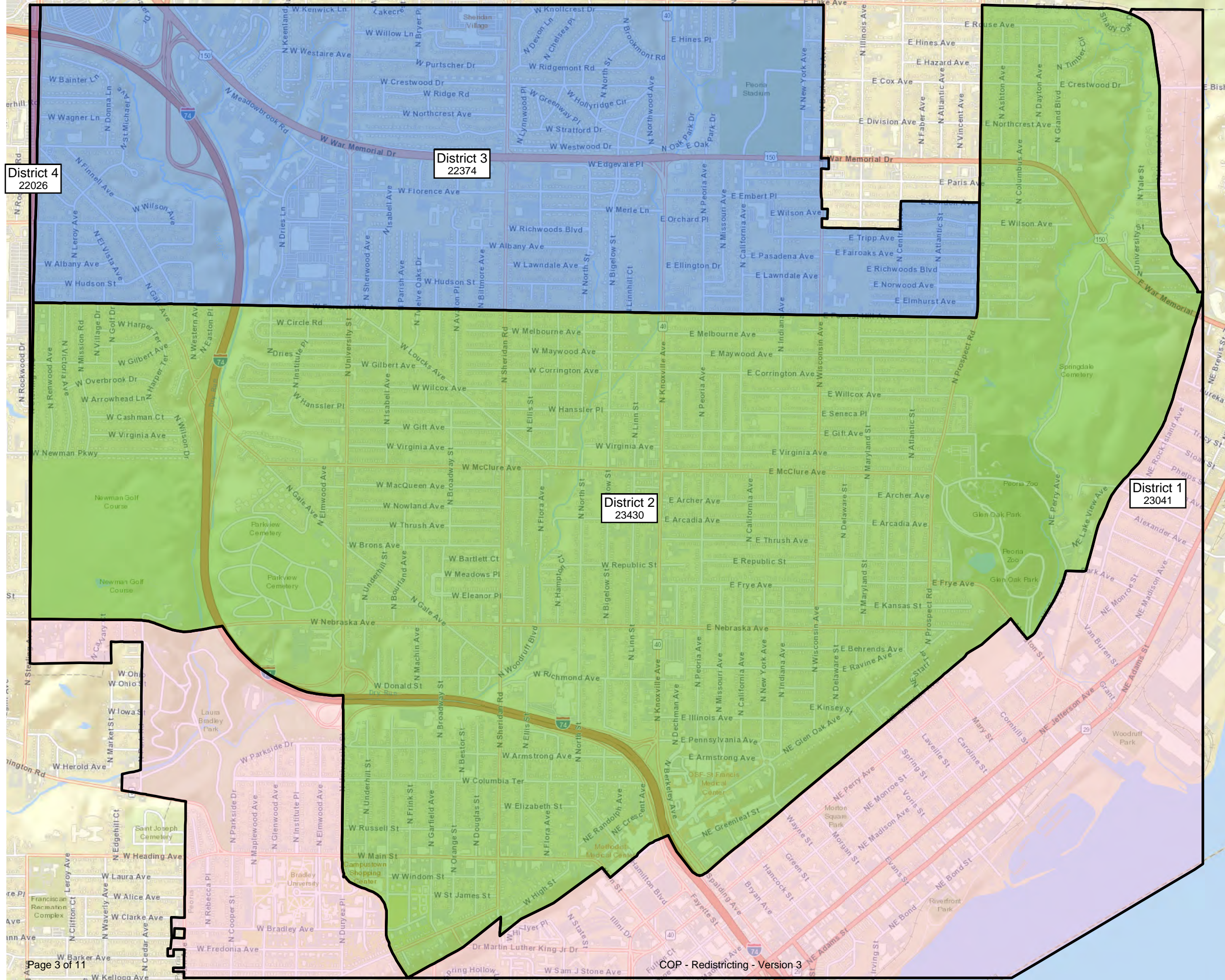
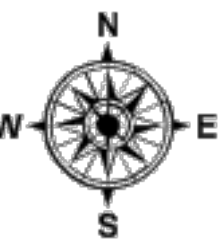
City of Peoria  
Redistricting 2020  
Version 3





1 INCH = 0.5 MILES



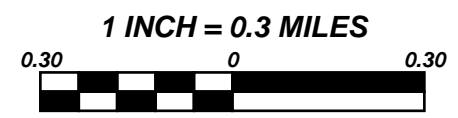


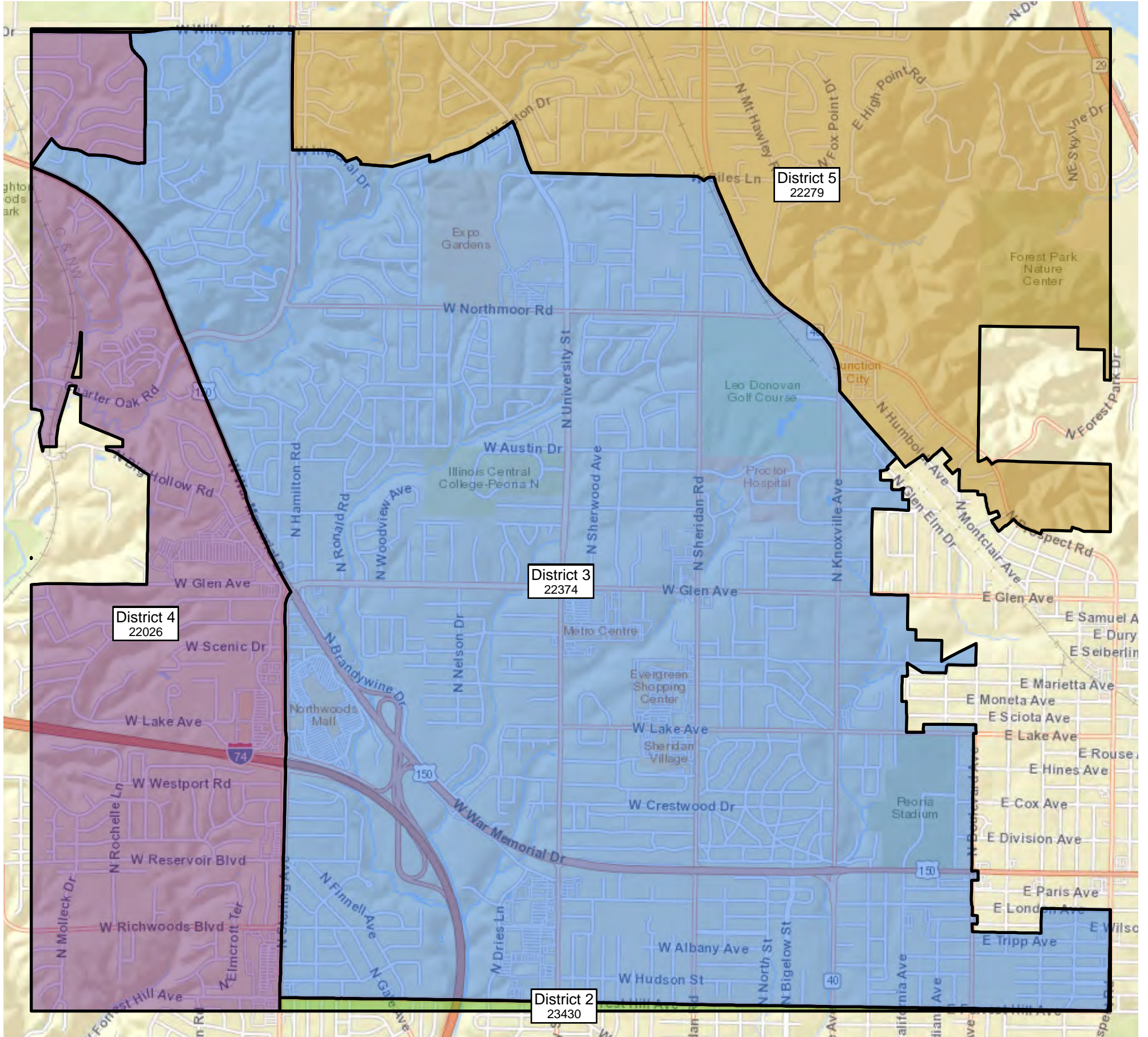
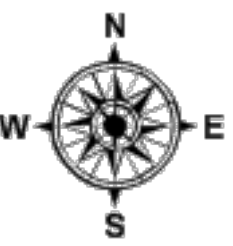
District 4  
22026

District 3  
22374

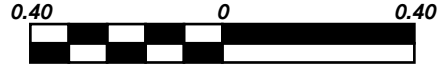
District 2  
23430

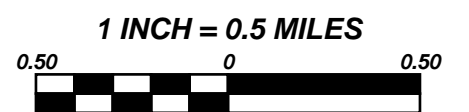
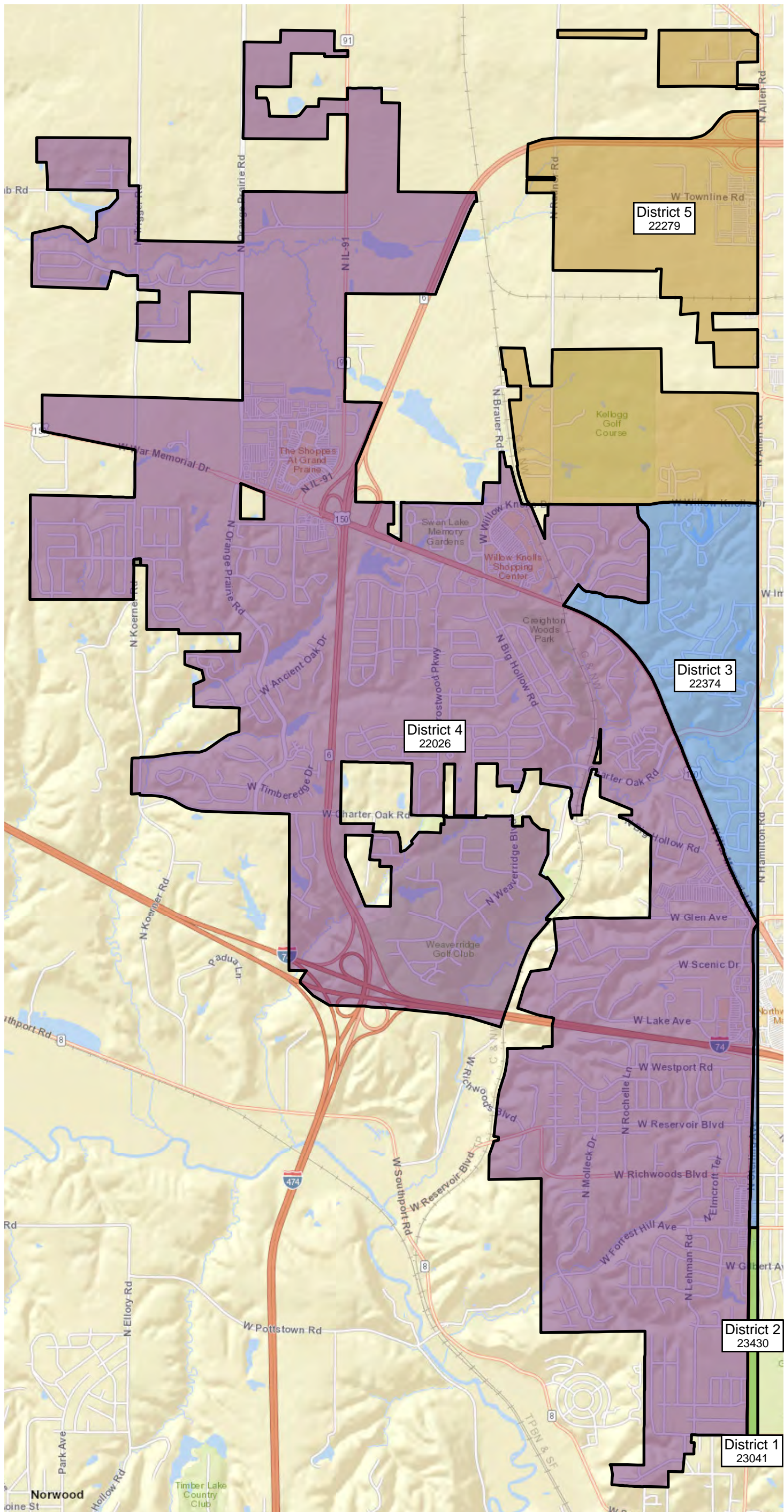
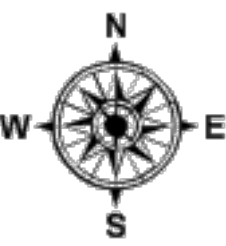
District 1  
23041

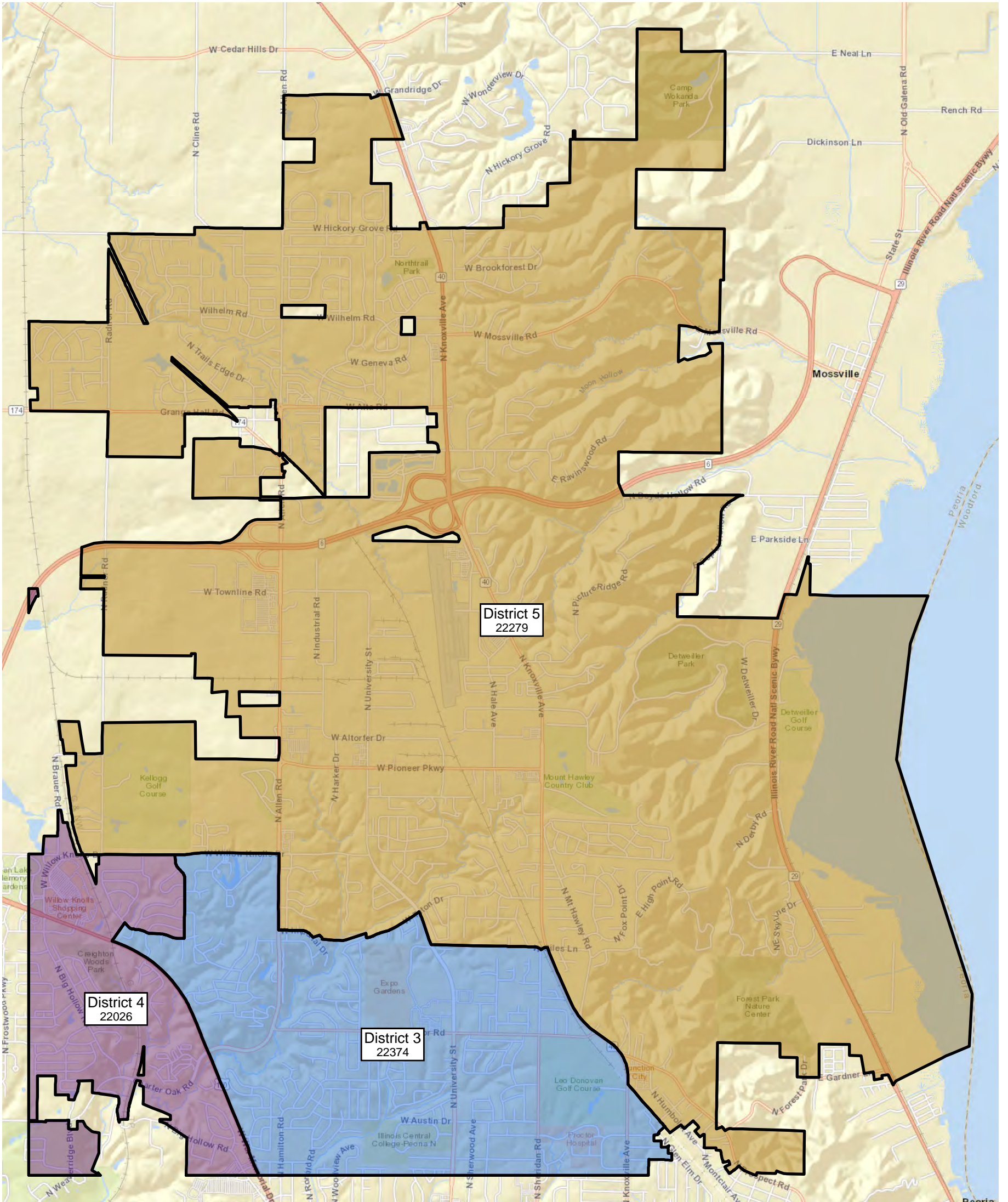
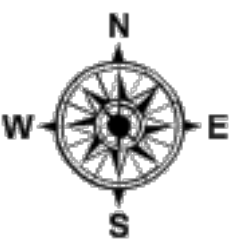




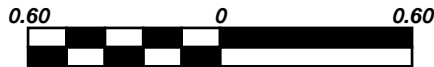
1 INCH = 0.4 MILES







1 INCH = 0.6 MILES



## All Districts Summary Report

<b>District No.</b>	<b>D1</b>
Total Population	23,041
Total Population 18+	17,317
Deviation	411
Dev. %	1.816

	Total Hispanic	Total Non-Hispanic	Total	Hispanic	Non-Hispanic	Non-Hispanic white	Non-Hispanic black	Non-Hispanic American Indian/Alaskan Native	Non-Hispanic Asian	Non-Hispanic Hawaiian or Other Pacific Islander
Total	2,525	20,516	23,041	2,525	20,516	8,222	11,298	233	365	16
Total%	10.96	89.04	100.00	10.96	89.04	35.68	49.03	1.01	1.58	0.07
Total18+	1,760	15,557	23,041	1,760	15,557	7,304	7,477	204	314	12
Total18+%	10.16	89.84	133.05	10.16	89.84	42.18	43.18	1.18	1.81	0.07

	Total Hispanic	Total Non-Hispanic	Non-Hispanic some other race	Non-Hispanic two or more minority race
Total	2,525	20,516	215	167
Total%	10.96	89.04	0.93	0.72
Total18+	1,760	15,557	138	108
Total18+%	10.16	89.84	0.80	0.62

<b>District No.</b>	<b>D2</b>
---------------------	-----------

Total Population 23,430

Total Population 18+ 17,097

Deviation 800

Dev. % 3.535

	Total Hispanic	Total Non-Hispanic	Total	Hispanic	Non-Hispanic	Non-Hispanic white	Non-Hispanic black	Non-Hispanic American Indian/Alaskan Native	Non-Hispanic Asian	Non-Hispanic Hawaiian or Other Pacific Islander
Total	2,515	20,915	23,430	2,515	20,915	8,956	10,775	260	396	11
Total%	10.73	89.27	100.00	10.73	89.27	38.22	45.99	1.11	1.69	0.05
Total18+	1,572	15,525	23,430	1,572	15,525	7,754	6,891	212	326	8
Total18+%	9.19	90.81	137.04	9.19	90.81	45.35	40.31	1.24	1.91	0.05

	Total Hispanic	Total Non-Hispanic	Non-Hispanic some other race	Non-Hispanic two or more minority race
Total	2,515	20,915	249	268
Total%	10.73	89.27	1.06	1.14
Total18+	1,572	15,525	186	148
Total18+%	9.19	90.81	1.09	0.87



<b>District No.</b>	<b>D3</b>
---------------------	-----------

Total Population 22,374

Total Population 18+ 17,907

Deviation -256

Dev. % -1.131

	Total Hispanic	Total Non-Hispanic	Total	Hispanic	Non-Hispanic	Non-Hispanic white	Non-Hispanic black	Non-Hispanic American Indian/Alaskan Native	Non-Hispanic Asian	Non-Hispanic Hawaiian or Other Pacific Islander
Total	1,102	21,272	22,374	1,102	21,272	15,544	4,210	251	890	15
Total%	4.93	95.07	100.00	4.93	95.07	69.47	18.82	1.12	3.98	0.07
Total18+	717	17,190	22,374	717	17,190	13,140	2,869	207	716	14
Total18+%	4.00	96.00	124.95	4.00	96.00	73.38	16.02	1.16	4.00	0.08

	Total Hispanic	Total Non-Hispanic	Non-Hispanic some other race	Non-Hispanic two or more minority race
Total	1,102	21,272	240	122
Total%	4.93	95.07	1.07	0.55
Total18+	717	17,190	172	72
Total18+%	4.00	96.00	0.96	0.40

<b>District No.</b>	<b>D4</b>
---------------------	-----------

Total Population 22,026

Total Population 18+ 17,124

Deviation -604

Dev. % -2.669

	Total Hispanic	Total Non-Hispanic	Total	Hispanic	Non-Hispanic	Non-Hispanic white	Non-Hispanic black	Non-Hispanic American Indian/Alaskan Native	Non-Hispanic Asian	Non-Hispanic Hawaiian or Other Pacific Islander
Total	956	21,070	22,026	956	21,070	12,745	5,992	217	1,785	21
Total%	4.34	95.66	100.00	4.34	95.66	57.86	27.20	0.99	8.10	0.10
Total18+	617	16,507	22,026	617	16,507	10,773	4,037	167	1,311	15
Total18+%	3.60	96.40	128.63	3.60	96.40	62.91	23.58	0.98	7.66	0.09

	Total Hispanic	Total Non-Hispanic	Non-Hispanic some other race	Non-Hispanic two or more minority race
Total	956	21,070	211	99
Total%	4.34	95.66	0.96	0.45
Total18+	617	16,507	145	59
Total18+%	3.60	96.40	0.85	0.34

<b>District No.</b>	<b>D5</b>
---------------------	-----------

Total Population 22,279

Total Population 18+	16,513
----------------------	--------

Deviation	-351
-----------	------

Dev. %	-1.551
--------	--------

	Total Hispanic	Total Non-Hispanic	Total	Hispanic	Non-Hispanic	Non-Hispanic white	Non-Hispanic black	Non-Hispanic American Indian/Alaskan Native	Non-Hispanic Asian	Non-Hispanic Hawaiian or Other Pacific Islander
Total	801	21,478	22,279	801	21,478	14,897	1,688	190	4,371	14
Total%	3.60	96.40	100.00	3.60	96.40	66.87	7.58	0.85	19.62	0.06
Total18+	487	16,026	22,279	487	16,026	11,666	1,093	137	2,913	5
Total18+%	2.95	97.05	134.92	2.95	97.05	70.65	6.62	0.83	17.64	0.03

	Total Hispanic	Total Non-Hispanic	Non-Hispanic some other race	Non-Hispanic two or more minority race
Total	801	21,478	243	75
Total%	3.60	96.40	1.09	0.34
Total18+	487	16,026	169	43
Total18+%	2.95	97.05	1.02	0.26