

STANLEY STEEMER®

CLEANING & RESTORATION

FIRE | WATER | MOLD | SMOKE & WIND RESTORATION
BOARD UPS | CONTENT PACK OUTS | IICRC CERTIFIED
24 HOUR EMERGENCY SERVICE



Complete Construction Services

REMODELING | FLOORING | DRYWALL
SIDING | PAINTING | ROOM ADDITIONS

Building A: 22,974 Sqft inside and it has a 1,708 sqft loading dock area that is open under the roof. This will house our carpet cleaning operations. We will have approximately 5900 sqft of office space. The office space will consist of a large meeting/training room, manager and customer service advisor offices. We will also have a contents/area rug cleaning room.

The office is where we will be answering our customer calls, scheduling jobs and running dispatch. Our crews meet every morning in the meeting room for about 15 minutes as a team and then leave in their vans to perform the work. They return when they completed their routes, clean their vans and re-stock for the next morning.

The warehouse space will be approximately 17,074 sqft. This is mainly used to house our carpet cleaning vans as they need to be inside a heated space during the winter. If they are left outside and freeze, it will cause major damage to the van mounted carpet cleaning equipment. We will have a drain and an area to wash the trucks off each night. As a cleaning company, we need to maintain a clean vehicles. We will also warehouse to store our cleaning supplies we need to re-stock our cleaning vans. We will house our water restoration equipment, tools and supplies that we use to dry water damaged homes. Equipment includes axial fans, dehumidifiers, air scrubbers. Floor scrubbers, dry ice blaster, dump truck, ladders, scrapers, hammers, drills etc.

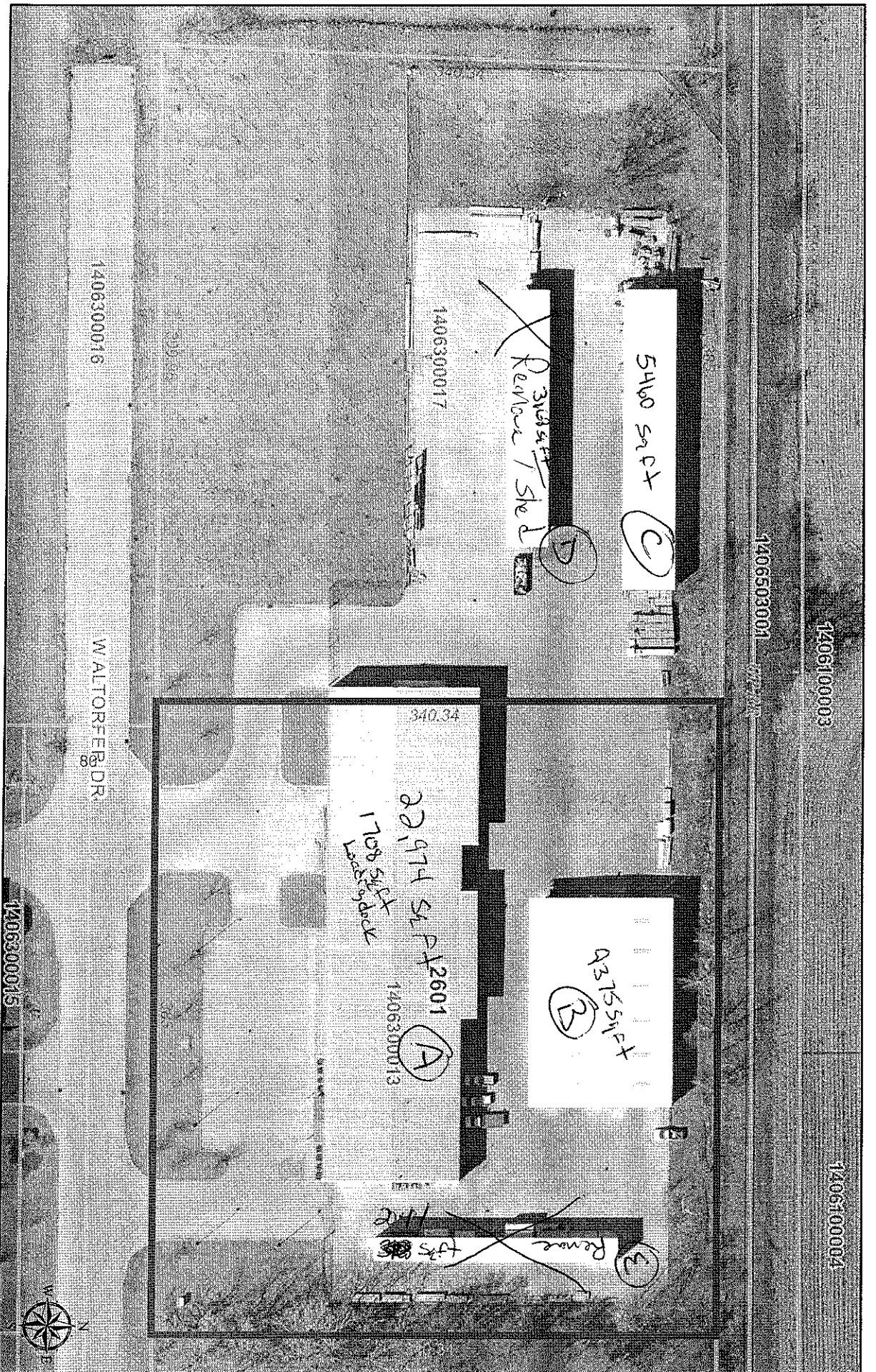
Building B: 9,375 sqft enclosed non-permanent pole barn style metal building. As of right now, we have no idea what we will be doing with this building.

Building C: 5460 sqft 3 sided shed metal building with 1 side completely open. We will likely use it to park our 5 dumpsters, snow plow and 3 trailers to help keep them partly covered.

Building D: 3168 sqft T-frame structure that was used by the old lumber yard that is open on all 4 sides. We will be tearing this down as we have no practical use for it in our business.

Building E: 2044 sqft 3 sided shed metal building with 1 side completely open. We will be tearing this down as we have no practical use for it. We may turn the space into additional employee parking

Peoria County, IL



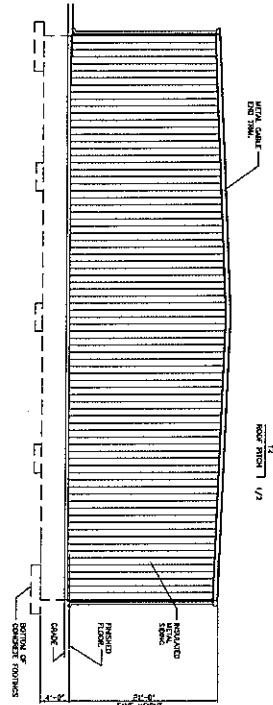
Disclaimer: Data is provided 'as is' without warranty or any representation of accuracy, timeliness or completeness. The burden of determining fitness for, or the appropriateness for use, rests solely on the requester. The requester acknowledges and accepts the limitations of the Data, including the fact that the Data is in a constant state of maintenance. This website is NOT intended to be used for legal litigation or boundary disputes and is informational.

1 inch = 83 feet

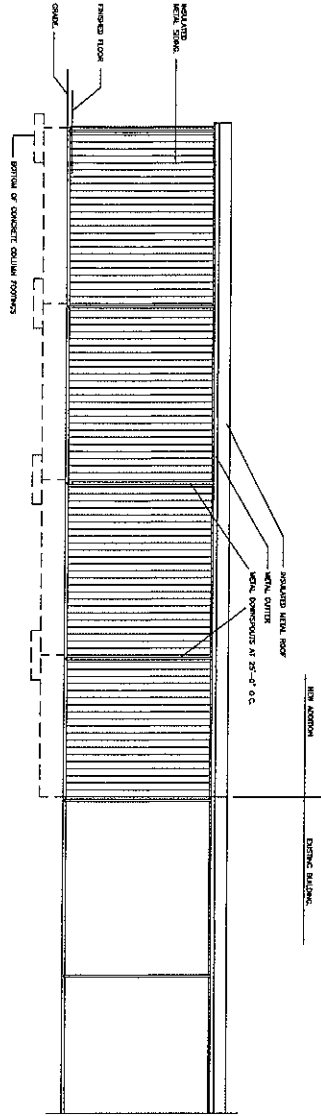
County of Peoria, Tri-County Regional Planning Commission, Kucera International, Inc.



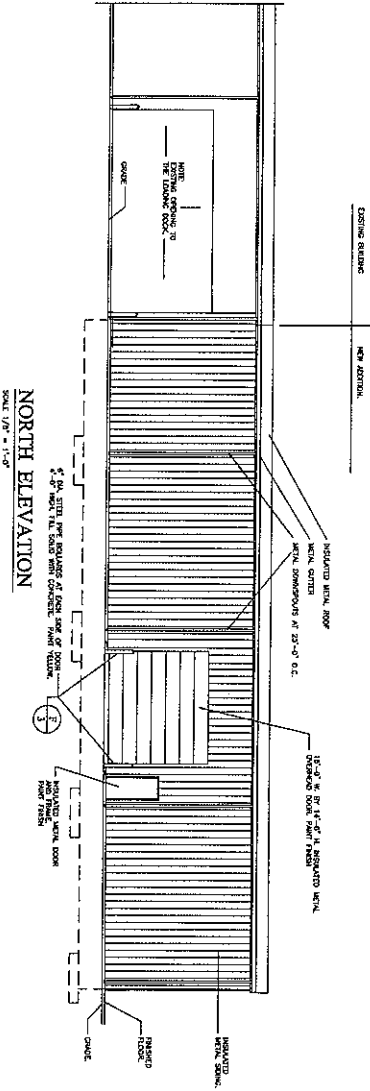
Elevations



WEST ELEVATION
SCALE 1/8" = 1'-0"



SOUTH ELEVATION
SCALE 1/8" = 1'-0"



NORTH ELEVATION
SCALE 1/8" = 1'-0"

11e-

DATE 01 16 02

HANDMAN LUMBER ADDITION
2601 W. ALTORFER
PEORIA, ILLINOIS 61615

DATE 2-7-2002
SCALE 1/8" = 1'-0"
DRAWN BY J.E.C.
CHECKED BY J.E.C.
DATE 2-7-2002
SCALE 1/8" = 1'-0"
FILL NO. 405-105

REVISIONS

1
1

J. REX SWITZER, AIA
LICENSED ARCHITECT
MEMBER OF THE AMERICAN INSTITUTE OF ARCHITECTS

242 E. Washington, Suite 64
BLOOMINGTON, ILLINOIS 61704
(309) 643-6437

