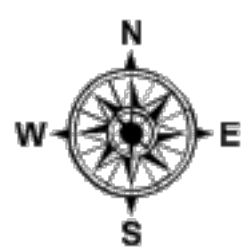
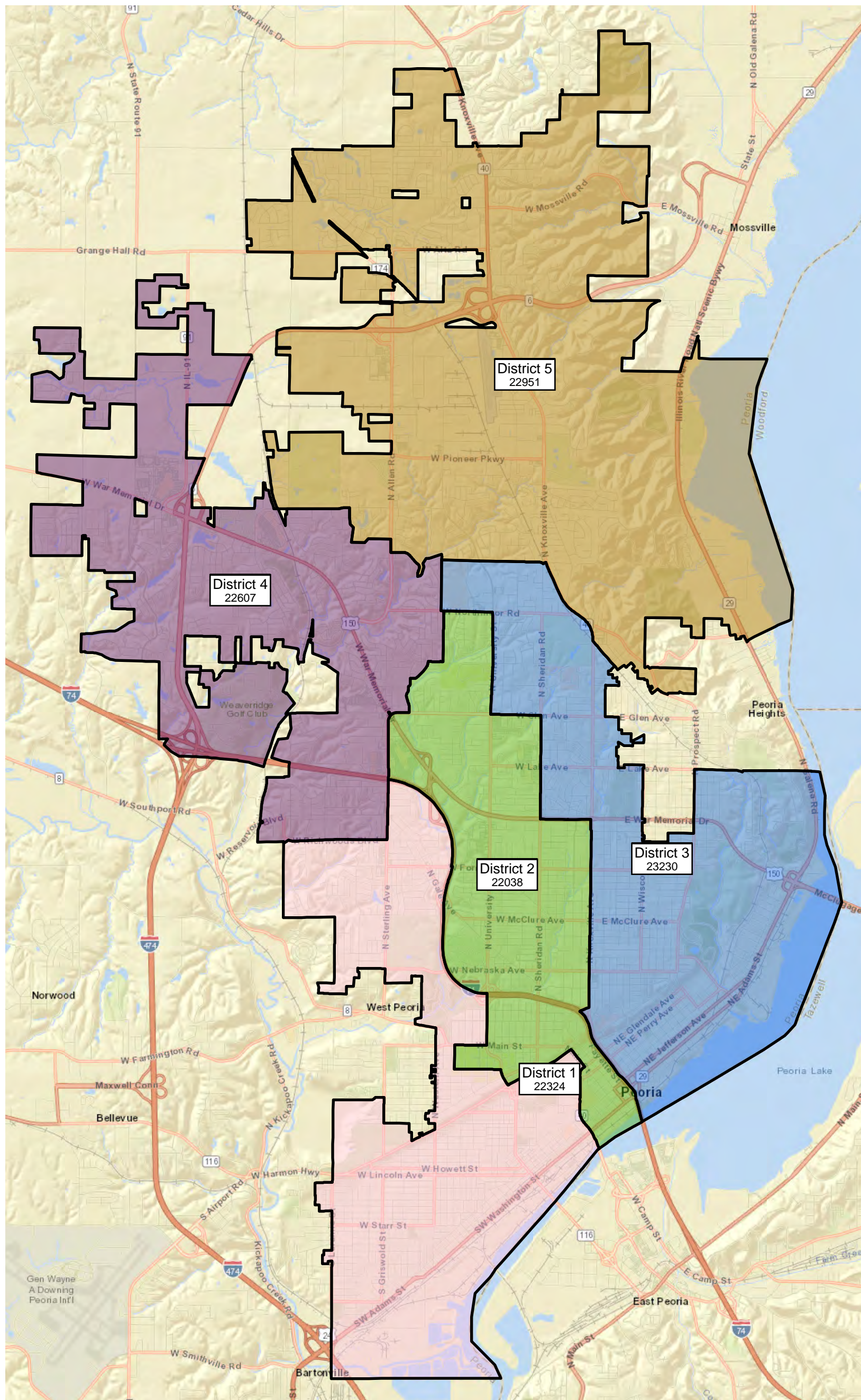


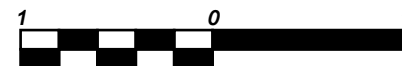
City of Peoria
Redistricting 2020

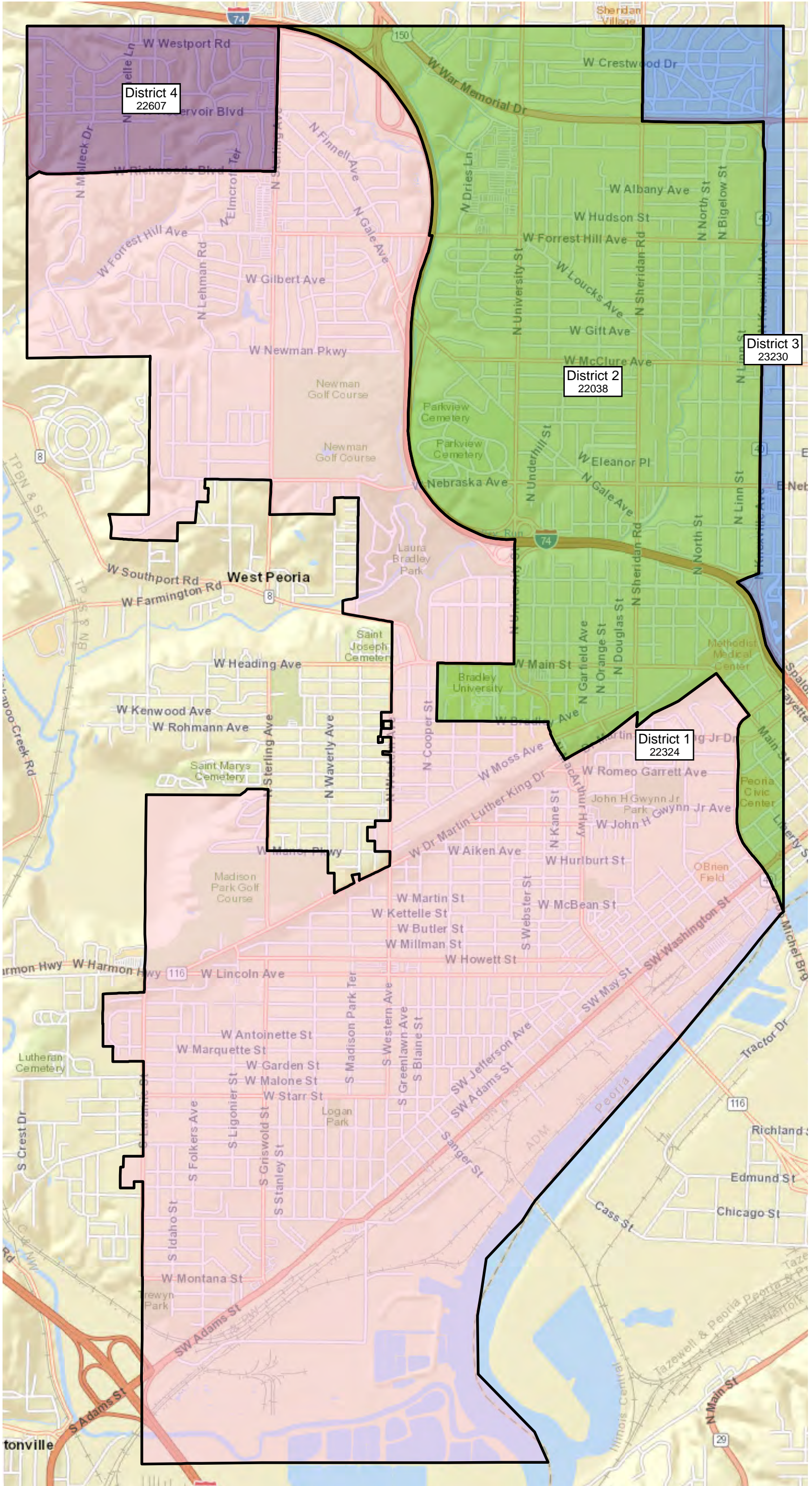
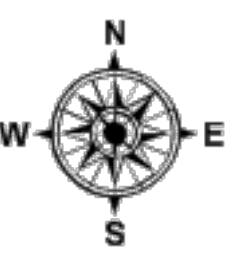


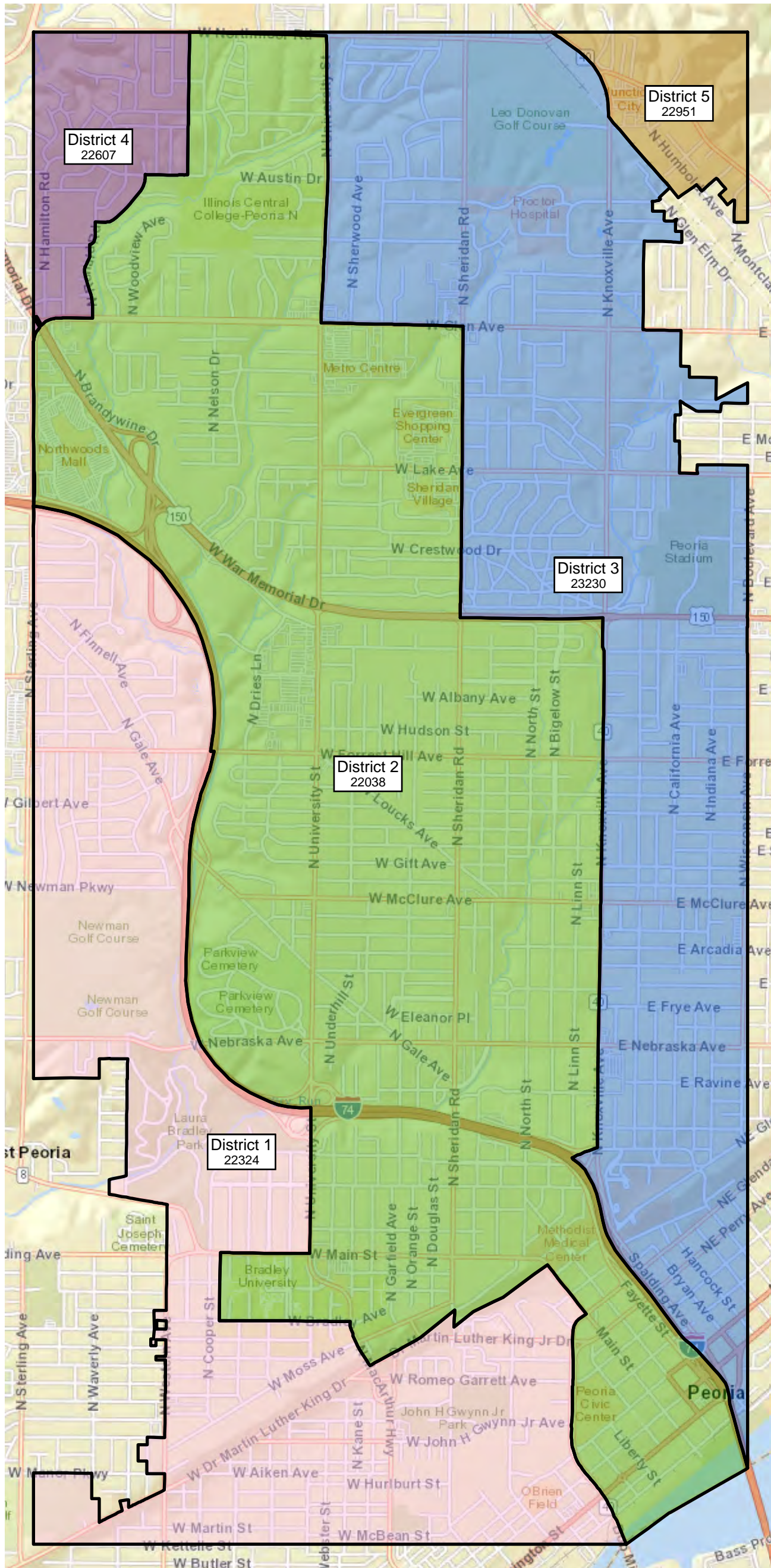
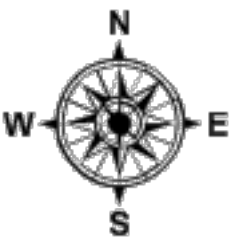
Version 2

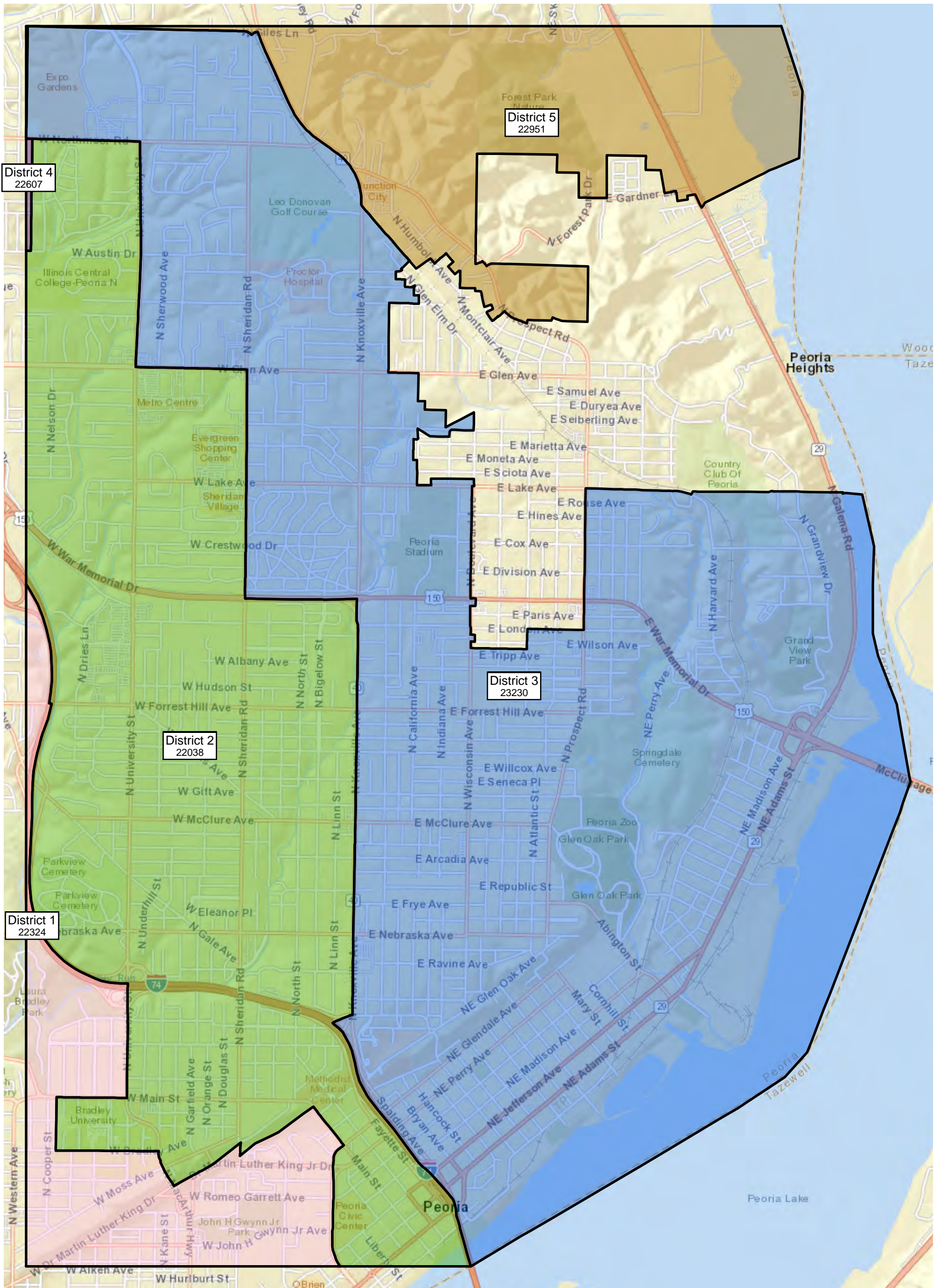
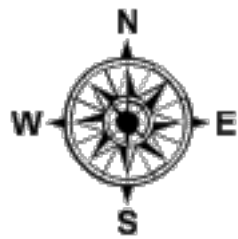


1 INCH = 1 MILES

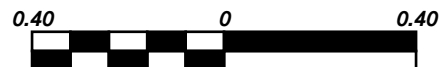


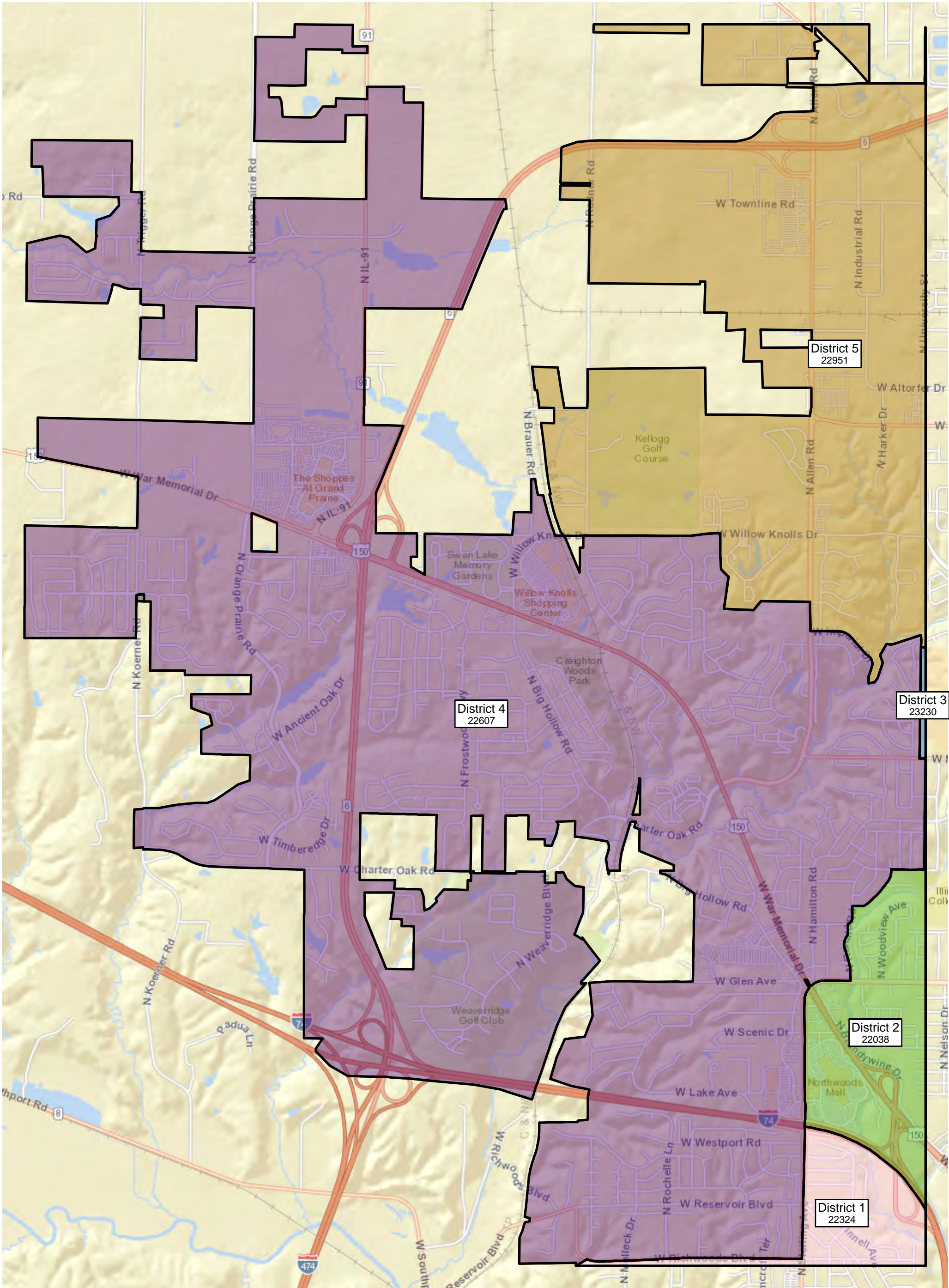
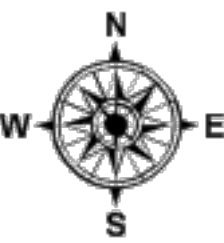






1 INCH = 0.4 MILES





District 5
22951

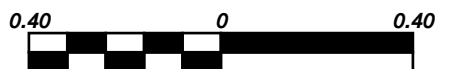
District 4
22607

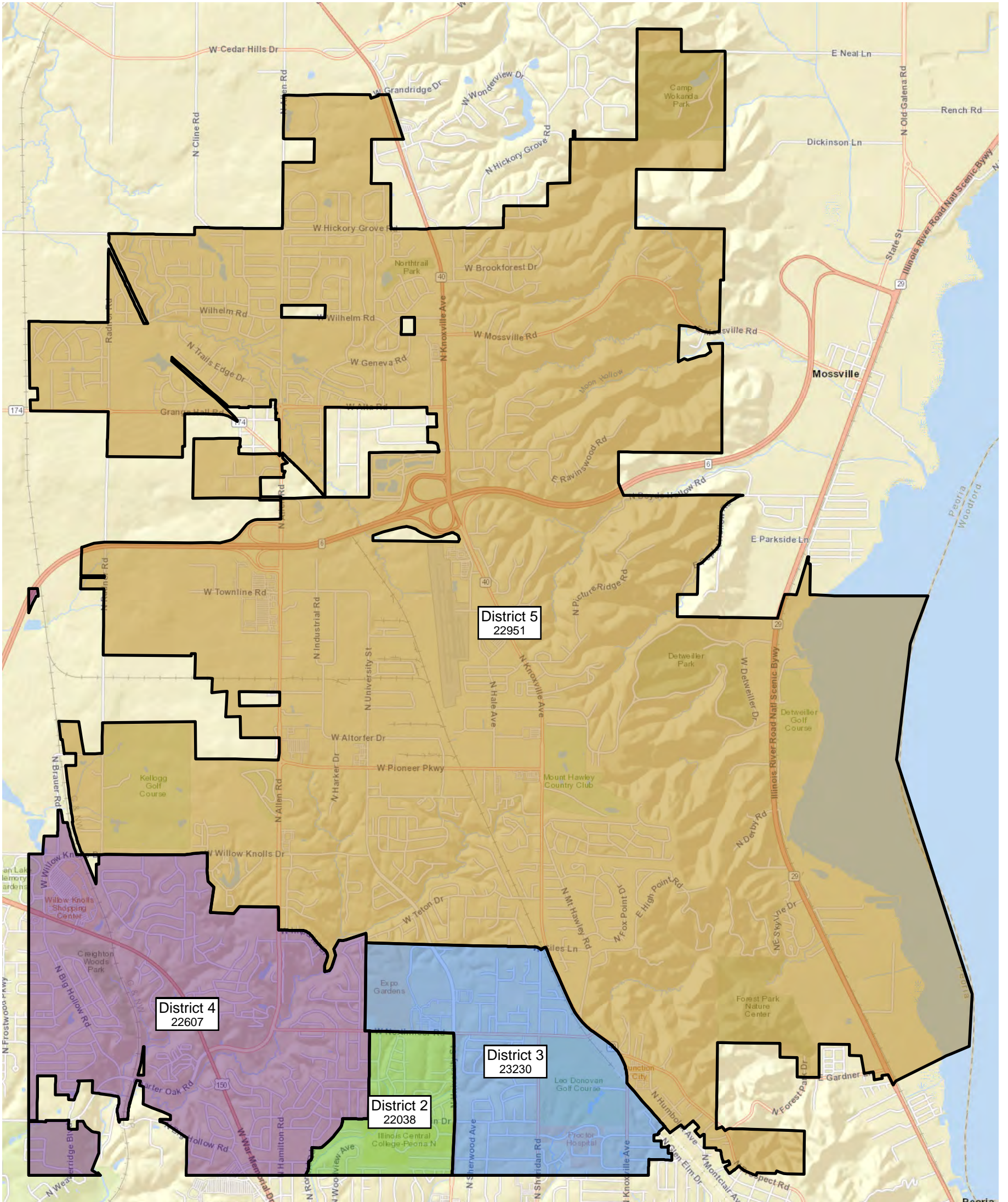
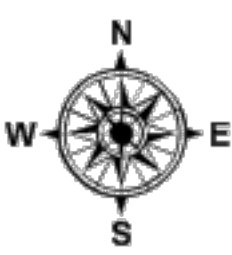
District 3
23230

District 2
22038

District 1
22324

1 INCH = 0.4 MILES





All Districts Summary Report

District No.	D1
Total Population	22,324
Total Population 18+	16,236
Deviation	-306
Dev. %	-1.352

	Total Hispanic	Total Non-Hispanic	Total	Hispanic	Non-Hispanic	Non-Hispanic white	Non-Hispanic black	Non-Hispanic American Indian/Alaskan Native	Non-Hispanic Asian	Non-Hispanic Hawaiian or Other Pacific Islander
Total	1,741	20,583	22,324	1,741	20,583	7,395	12,266	205	303	21
Total%	7.80	92.20	100.00	7.80	92.20	33.13	54.95	0.92	1.36	0.09
Total18+	1,133	15,103	22,324	1,133	15,103	6,407	8,020	170	233	17
Total18+%	6.98	93.02	137.50	6.98	93.02	39.46	49.40	1.05	1.44	0.10

	Total Hispanic	Total Non-Hispanic	Non-Hispanic some other race	Non-Hispanic two or more minority race
Total	1,741	20,583	222	171
Total%	7.80	92.20	0.99	0.77
Total18+	1,133	15,103	141	115
Total18+%	6.98	93.02	0.87	0.71

District No. D2

Total Population 22,038

Total Population 18+ 17,462

Deviation -592

Dev. % -2.616

	Total Hispanic	Total Non-Hispanic	Total	Hispanic	Non-Hispanic	Non-Hispanic white	Non-Hispanic black	Non-Hispanic American Indian/Alaskan Native	Non-Hispanic Asian	Non-Hispanic Hawaiian or Other Pacific Islander
Total	1,726	20,312	22,038	1,726	20,312	11,626	7,347	279	642	12
Total%	7.83	92.17	100.00	7.83	92.17	52.75	33.34	1.27	2.91	0.05
Total18+	1,228	16,234	22,038	1,228	16,234	10,180	4,988	235	544	9
Total18+%	7.03	92.97	126.21	7.03	92.97	58.30	28.56	1.35	3.12	0.05

	Total Hispanic	Total Non-Hispanic	Non-Hispanic some other race	Non-Hispanic two or more minority race
Total	1,726	20,312	217	189
Total%	7.83	92.17	0.98	0.86
Total18+	1,228	16,234	165	113
Total18+%	7.03	92.97	0.94	0.65

District No.	D3
---------------------	-----------

Total Population 23,230

Total Population 18+ 17,352

Deviation 600

Dev. % 2.651

	Total Hispanic	Total Non-Hispanic	Total	Hispanic	Non-Hispanic	Non-Hispanic white	Non-Hispanic black	Non-Hispanic American Indian/Alaskan Native	Non-Hispanic Asian	Non-Hispanic Hawaiian or Other Pacific Islander
Total	2,557	20,673	23,230	2,557	20,673	11,330	8,174	240	492	16
Total%	11.01	88.99	100.00	11.01	88.99	48.77	35.19	1.03	2.12	0.07
Total18+	1,630	15,722	23,230	1,630	15,722	9,710	5,130	207	400	13
Total18+%	9.39	90.61	133.88	9.39	90.61	55.96	29.56	1.19	2.31	0.07

	Total Hispanic	Total Non-Hispanic	Non-Hispanic some other race	Non-Hispanic two or more minority race
Total	2,557	20,673	234	187
Total%	11.01	88.99	1.01	0.80
Total18+	1,630	15,722	166	96
Total18+%	9.39	90.61	0.96	0.55

District No.	D4
---------------------	-----------

Total Population 22,607

Total Population 18+ 17,835

Deviation -23

Dev. % -0.102

	Total Hispanic	Total Non-Hispanic	Total	Hispanic	Non-Hispanic	Non-Hispanic white	Non-Hispanic black	Non-Hispanic American Indian/Alaskan Native	Non-Hispanic Asian	Non-Hispanic Hawaiian or Other Pacific Islander
Total	1,045	21,562	22,607	1,045	21,562	14,674	4,366	233	1,935	14
Total%	4.62	95.38	100.00	4.62	95.38	64.91	19.31	1.03	8.56	0.06
Total18+	651	17,184	22,607	651	17,184	12,272	3,067	174	1,435	10
Total18+%	3.65	96.35	126.76	3.65	96.35	68.81	17.20	0.98	8.05	0.06

	Total Hispanic	Total Non-Hispanic	Non-Hispanic some other race	Non-Hispanic two or more minority race
Total	1,045	21,562	235	105
Total%	4.62	95.38	1.04	0.46
Total18+	651	17,184	164	62
Total18+%	3.65	96.35	0.92	0.35

District No.	D5
---------------------	-----------

Total Population 22,951

Total Population 18+	17,073
----------------------	--------

Deviation	321
-----------	-----

Dev. %	1.418
--------	-------

	Total Hispanic	Total Non-Hispanic	Total	Hispanic	Non-Hispanic	Non-Hispanic white	Non-Hispanic black	Non-Hispanic American Indian/Alaskan Native	Non-Hispanic Asian	Non-Hispanic Hawaiian or Other Pacific Islander
Total	830	22,121	22,951	830	22,121	15,339	1,810	194	4,435	14
Total%	3.62	96.38	100.00	3.62	96.38	66.83	7.89	0.85	19.32	0.06
Total18+	511	16,562	22,951	511	16,562	12,068	1,162	141	2,968	5
Total18+%	2.99	97.01	134.43	2.99	97.01	70.68	6.81	0.83	17.38	0.03

	Total Hispanic	Total Non-Hispanic	Non-Hispanic some other race	Non-Hispanic two or more minority race
Total	830	22,121	250	79
Total%	3.62	96.38	1.09	0.34
Total18+	511	16,562	174	44
Total18+%	2.99	97.01	1.02	0.26