

Rethinking  
the....

# WISCONSIN AVE

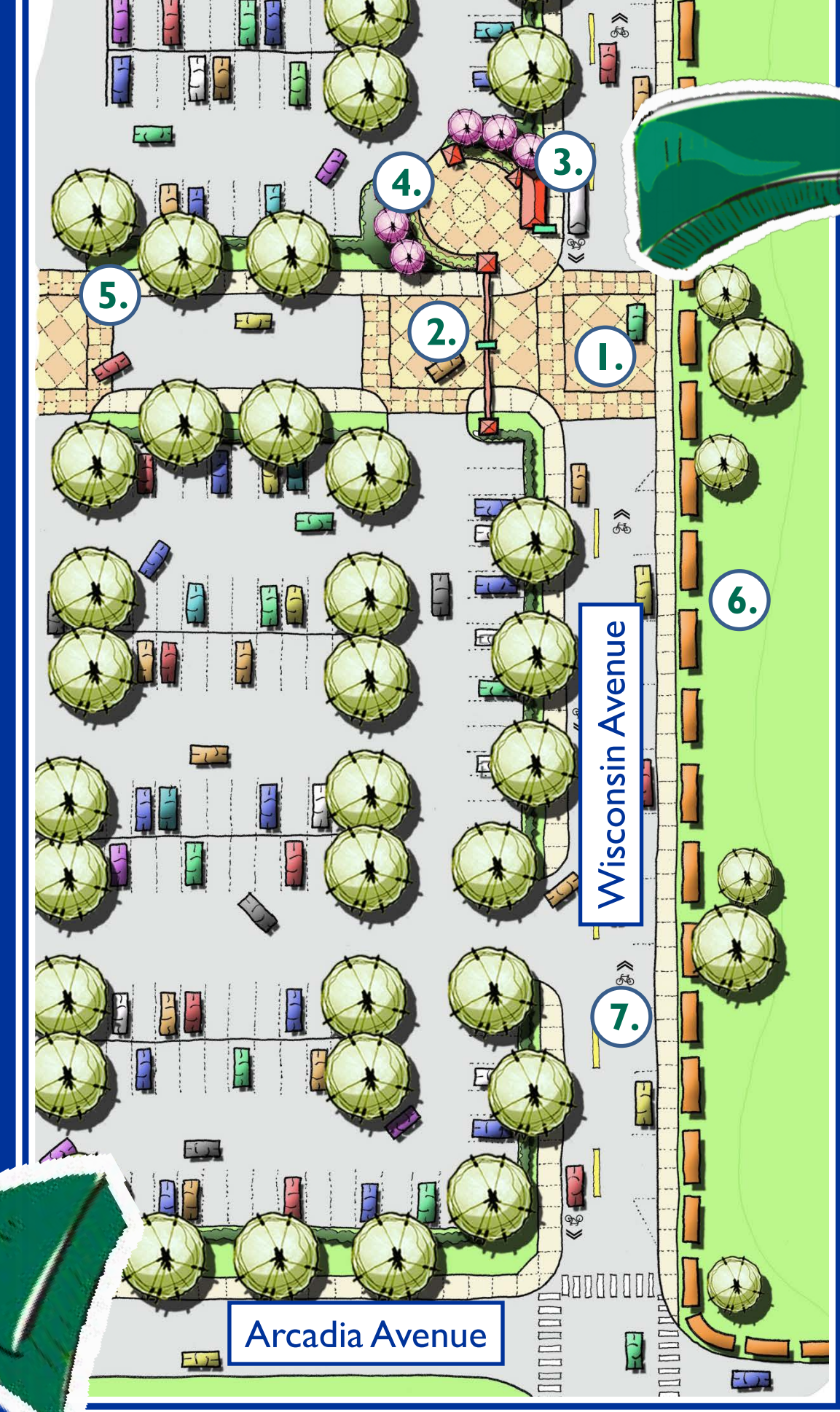
# Business Corridor

www.rethinkingwisconsinave.com

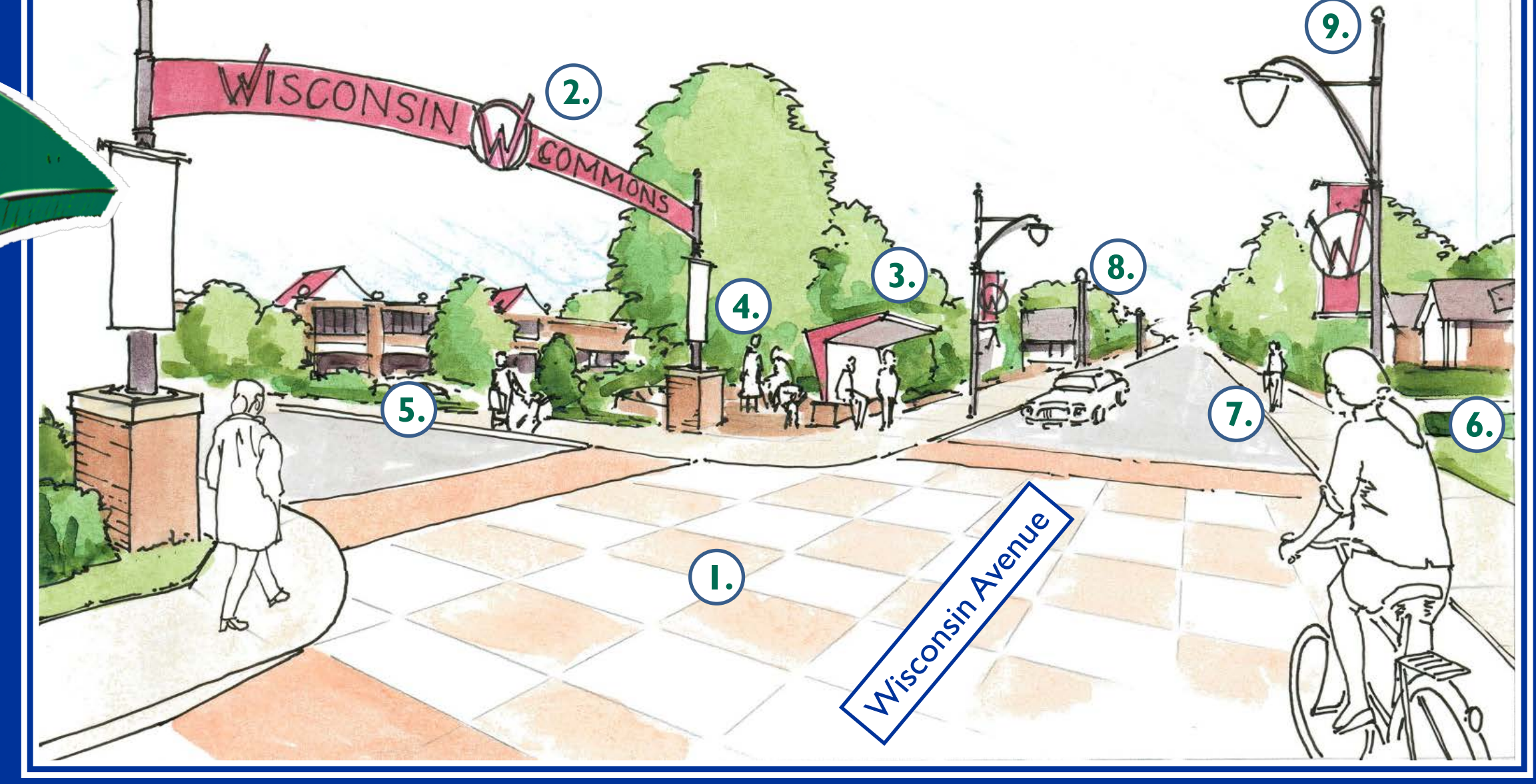
## Study Area



## Kroger Plaza Entry – Plan View



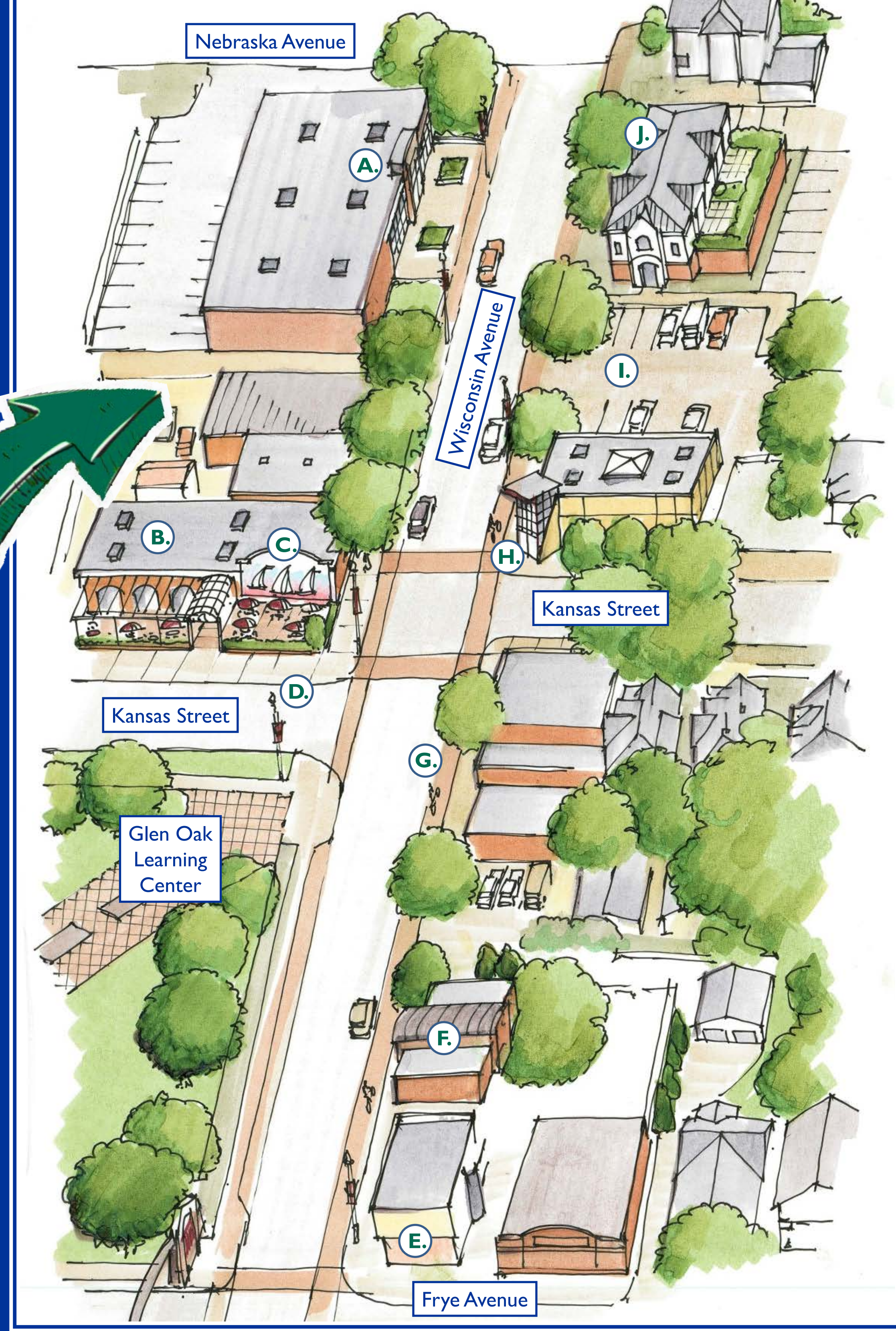
## Kroger Plaza Entry – View Looking North



### Legend | Kroger Plaza Entry

- 1. Raised Intersection for Traffic Calming
- 2. Entry Archway with Corridor Branding
- 3. Relocated Bus Stop
- 4. Bus Stop Plaza
- 5. New Sidewalks Along Entry Drive
- 6. Redevelopment Opportunity (Residential, Retail, Mixed Use, etc.)
- 7. Bicycle Lane
- 8. Pedestrian Light Fixtures
- 9. Vehicular Light Fixtures with Metal Artwork Banners

## Southern Retail Core – View Looking South



### Legend | Southern Retail Core

- A. Retail Redevelopment
- B. Restaurant Redevelopment with Sidewalk Cafe
- C. Murals on Blank Building Facades
- D. Light Fixtures with Metal Artwork Banners
- E. Improve Existing Facades
- F. Infill Retail Development
- G. Bicycle Lane
- H. Retail or Restaurant Use on Corner
- I. Parking on Sides or Between Buildings
- J. Mixed Use Redevelopment (Ground Floor Retail, Second Floor Residential, etc.)

## Implementation | Involving You

- Stakeholder Tasks | 2015**
  - Finalize brand and design elements for the corridor.
  - Establish Overlay District to support implementation.
  - Begin corridor artwork.
  - Recruit new and diverse businesses. (ethnic restaurants, coffee shops, service businesses, etc.)
  - Hold "First Friday" with area artists.
  - Work with District 150 on use of Glen Oak Learning Center.
  - Identify future bus stop locations and enhancements.
  - Address snow removal issues on sidewalks.
  - Continue to address crime issues in the area.
- Stakeholder Tasks | 2016**
  - Provide unified litter bins throughout the corridor.
  - Implement façade improvement program.
  - Reconfigure Kroger parking lot main entry.
  - Bury power lines underground in key areas.
  - Provide additional lighting throughout the corridor.
  - Create gateway signage at Glen Oak Ave. & Forrest Hill Ave.
  - Add vehicular lighting where power lines are buried.
  - Identify location for neighborhood splashpad.
- Stakeholder Tasks | 2017-2020**
  - Continue to recruit new and diverse businesses. (ethnic restaurants, coffee shops, service businesses, etc.)
  - Construct raised intersection at Kroger Plaza entry.
  - Potential redevelopment of the Glen Oak Condominiums.
  - Redesign and relocation of bus stops within the corridor.
  - Finalize façade improvements.
  - Finalize remaining street lighting upgrades.
  - Provide branded street banners on lights.
  - Recruit area artists to relocate studios to the area.