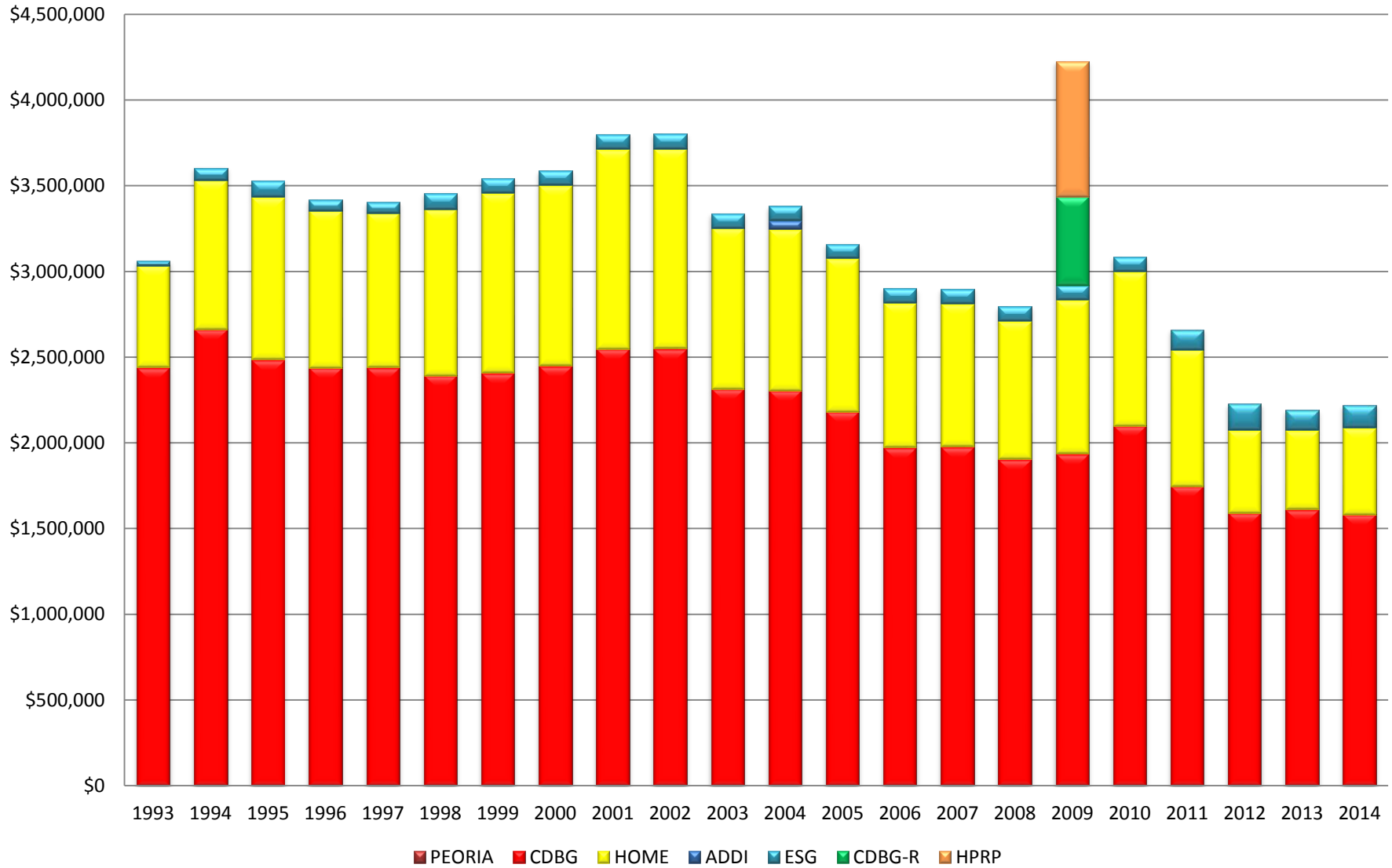


Attachment 1

Historic HUD Funding Levels



PEORIA	1993	1994	1995	1996	1997	1998	1999	2000	2001	2002	2003	2004	2005	2006	2007	2008	2009	2010	2011	2012	2013	2014	TOTAL
CDBG	\$ 2,438,000	\$ 2,659,000	\$ 2,486,000	\$ 2,435,000	\$ 2,439,000	\$ 2,392,000	\$ 2,406,000	\$ 2,449,000	\$ 2,546,000	\$ 2,549,000	\$ 2,312,000	\$ 2,304,000	\$ 2,179,812	\$ 1,972,960	\$ 1,976,614	\$ 1,903,257	\$ 1,934,718	\$ 2,097,537	\$ 1,743,928	\$ 1,589,868	\$ 1,609,901	\$ 1,581,903	\$48,005,498
HOME	\$ 592,000	\$ 872,000	\$ 945,000	\$ 918,000	\$ 901,000	\$ 970,000	\$ 1,049,000	\$ 1,051,000	\$ 1,166,000	\$ 1,165,000	\$ 938,000	\$ 940,000	\$ 893,956	\$ 841,161	\$ 833,604	\$ 805,062	\$ 897,803	\$ 899,991	\$ 796,469	\$ 481,835	\$ 462,964	\$ 503,138	\$18,922,983
ADDI	\$ -	\$ -	\$ -	\$ -	\$ -	\$ -	\$ -	\$ -	\$ -	\$ -	\$ -	\$ 51,254	\$ -	\$ -	\$ -	\$ -	\$ -	\$ -	\$ -	\$ -	\$ -	\$ -	\$ 51,254
ESG	\$ 30,000	\$ 71,000	\$ 96,000	\$ 63,000	\$ 63,000	\$ 93,000	\$ 85,000	\$ 85,000	\$ 86,000	\$ 87,000	\$ 87,000	\$ 84,572	\$ 84,270	\$ 83,847	\$ 85,093	\$ 85,165	\$ 84,734	\$ 84,770	\$ 118,072	\$ 154,096	\$ 115,986	\$ 130,786	\$ 1,957,391
CDBG-R	\$ -	\$ -	\$ -	\$ -	\$ -	\$ -	\$ -	\$ -	\$ -	\$ -	\$ -	\$ -	\$ -	\$ -	\$ -	\$ -	\$ -	\$ 516,509	\$ -	\$ -	\$ -	\$ -	\$ 516,509
HPRP	\$ -	\$ -	\$ -	\$ -	\$ -	\$ -	\$ -	\$ -	\$ -	\$ -	\$ -	\$ -	\$ -	\$ -	\$ -	\$ -	\$ -	\$ 790,404	\$ -	\$ -	\$ -	\$ -	\$ 790,404
TOTAL	\$ 3,060,000	\$ 3,602,000	\$ 3,527,000	\$ 3,416,000	\$ 3,403,000	\$ 3,455,000	\$ 3,540,000	\$ 3,585,000	\$ 3,798,000	\$ 3,801,000	\$ 3,337,000	\$ 3,379,826	\$ 3,158,038	\$ 2,897,968	\$ 2,895,311	\$ 2,793,484	\$ 4,224,168	\$ 3,082,298	\$ 2,658,469	\$ 2,225,799	\$ 2,188,851	\$ 2,215,827	\$70,244,039