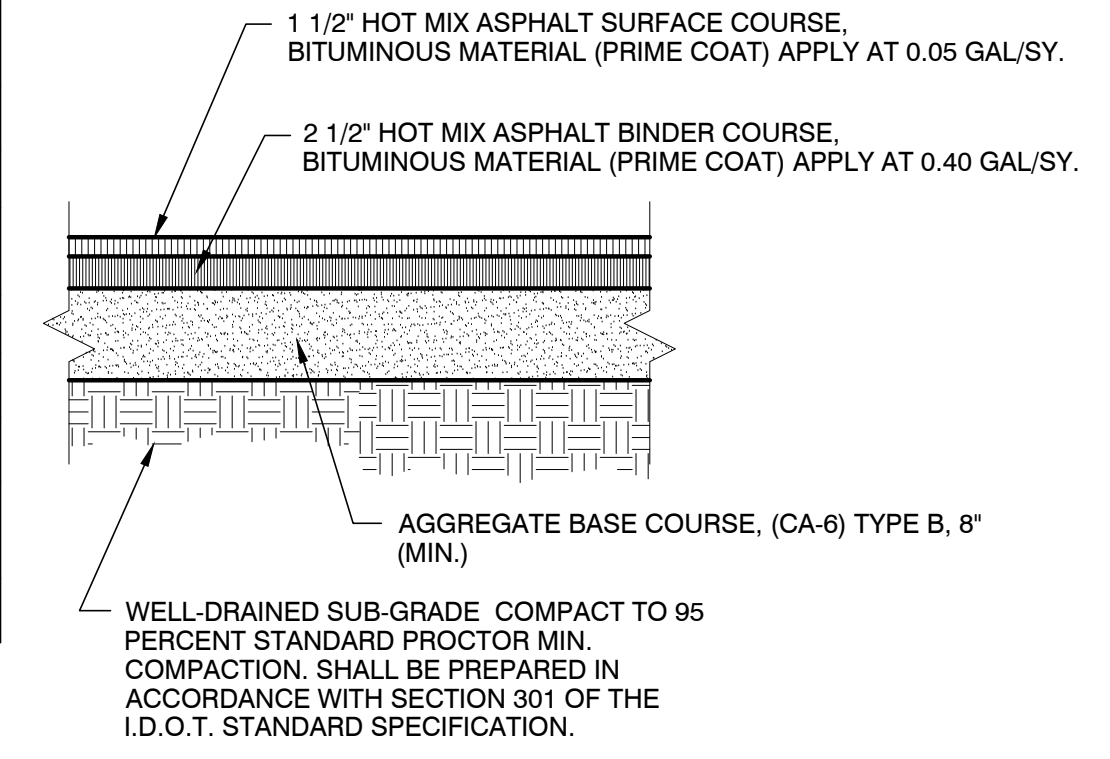
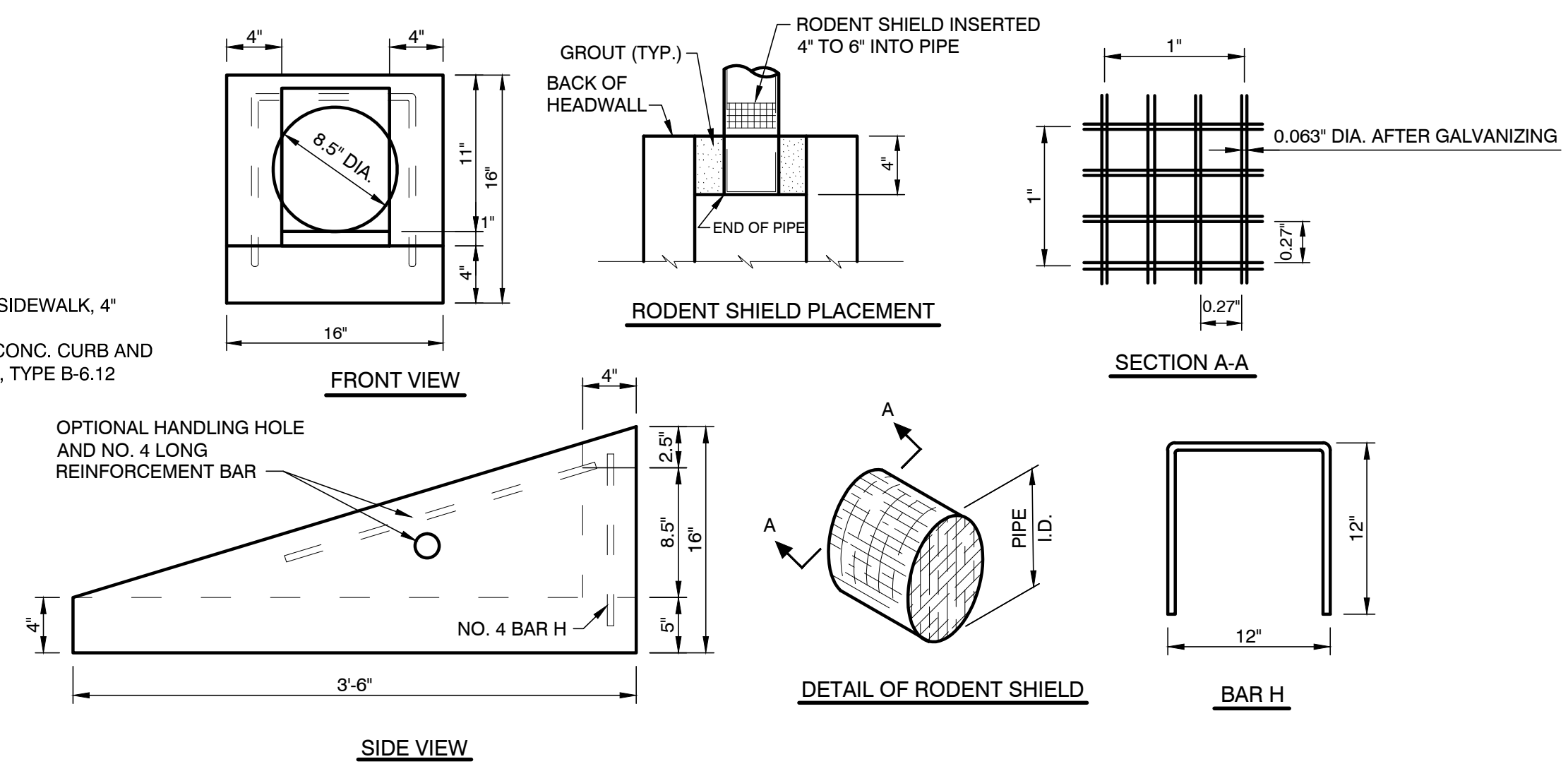


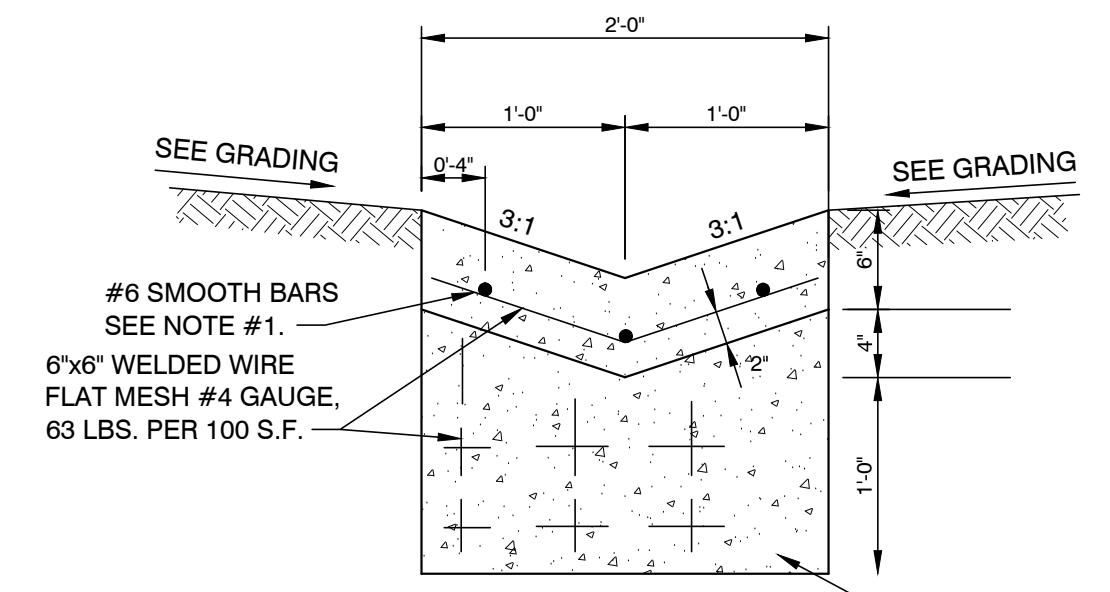
MIXTURE REQUIREMENTS	
LOCATION (S) AND MIXTURE USE (S)	BITUMINOUS CONCRETE SURFACE COURSE
AC / PG	PG 64-22
RAP % (MAX.)	0%
DESIGN AIR VOIDS	4.2% @ Ndes = 50
MIXTURE COMPOSITION (GRADATION MIXTURE)	IL 9.5 OR IL 12.5
FRICITION AGGREGATE	MIXTURE D
LOCATION (S) AND MIXTURE USE (S)	BITUMINOUS CONCRETE BINDER COURSE
AC / PG	PG 64-22
RAP % (MAX.)	0%
DESIGN AIR VOIDS	4.2%
MIXTURE COMPOSITION (GRADATION MIXTURE)	IL 19.0
FRICITION AGGREGATE	N/A



**HOT-MIX ASPHALT (HMA) PAVEMENT**  
NOT TO SCALE



**CONCRETE HEADWALL FOR PIPE DRAIN**  
NOT TO SCALE



**PAVED DITCH DETAIL**  
NOT TO SCALE

**NOTES:**  
1. TRIM ALL TREES AS REQUIRED ALONG FENCELINE FOR FENCE INSTALLATION  
2. CURB AND SIDEWALK SHOWN ON ROCKWOOD SHALL BE REMOVED AND REPLACED TO NEAREST JOINT

PARKING SUMMARY	
EXISTING PARKING SPACES = 41	NEW PARKING SPACES = 82
EXISTING SPACES LOST = 15	TOTAL NET SPACES = +67

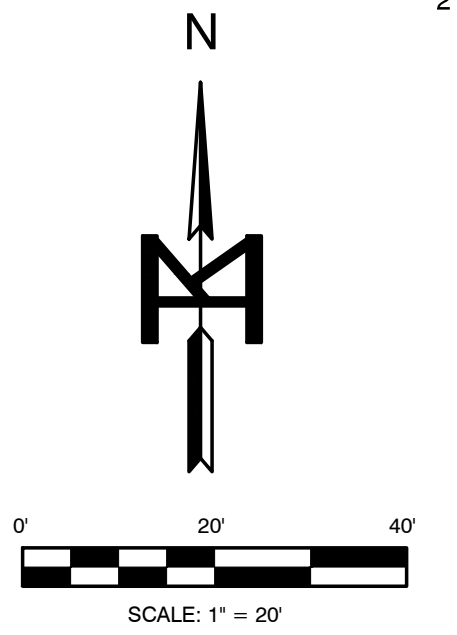
- GENERAL NOTES:**
- PROVIDE 3/4" EXPANSION JOINTS AT WORK STOPPAGE POINTS, AND AT A MAXIMUM OF 200' O.C. USE No. 6 SMOOTH BARS, 18" LONG, WITH A METALLIC EXPANSION SLEEVE ON ONE END. GREASE THE HALF OF BAR WITH THE EXPANSION SLEEVE. EXPANSION JOINT MATERIAL SHALL BE FLEX/FOAM EXPANSION JOINT, AS MANUFACTURED BY THE RIGHT POINTE COMPANY, OR APPROVED EQUAL.
  - PROVIDE SAWED CONTRACTION JOINTS AT 20' O.C., 2" DEEP.
  - FILL EXPANSION JOINTS AND SAW CUTS WITH APPROVED JOINT SEALER.
  - ALL REINFORCEMENT BARS TO BE EPOXY COATED.

**PRELIMINARY ONLY**  
NOT FOR CONSTRUCTION

BM-1  
ECB ON EXISTING FIRE HYDRANT  
SOUTHWEST SIDE OF SITE  
SOUTH OF EXISTING BUILDING  
ELEV = 640.40

BM-2  
BLACK "X" IN CORNER OF SIDEWALK  
ACROSS ROCKWOOD ON EAST  
SIDE OF SITE  
ELEV = 646.61

**SITE CONCEPT PLAN**  
SCALE: 1" = 20'



REV.	DATE	NATURE OF REVISION	CHECKED	DATE

FILE NAME: I:\SERVICES\new\_projects\14-250 PJ\Heer - Proctor Home Parking Study\DWG\CS Site Layout Plan 14-250.dwg, Dec 03, 2015