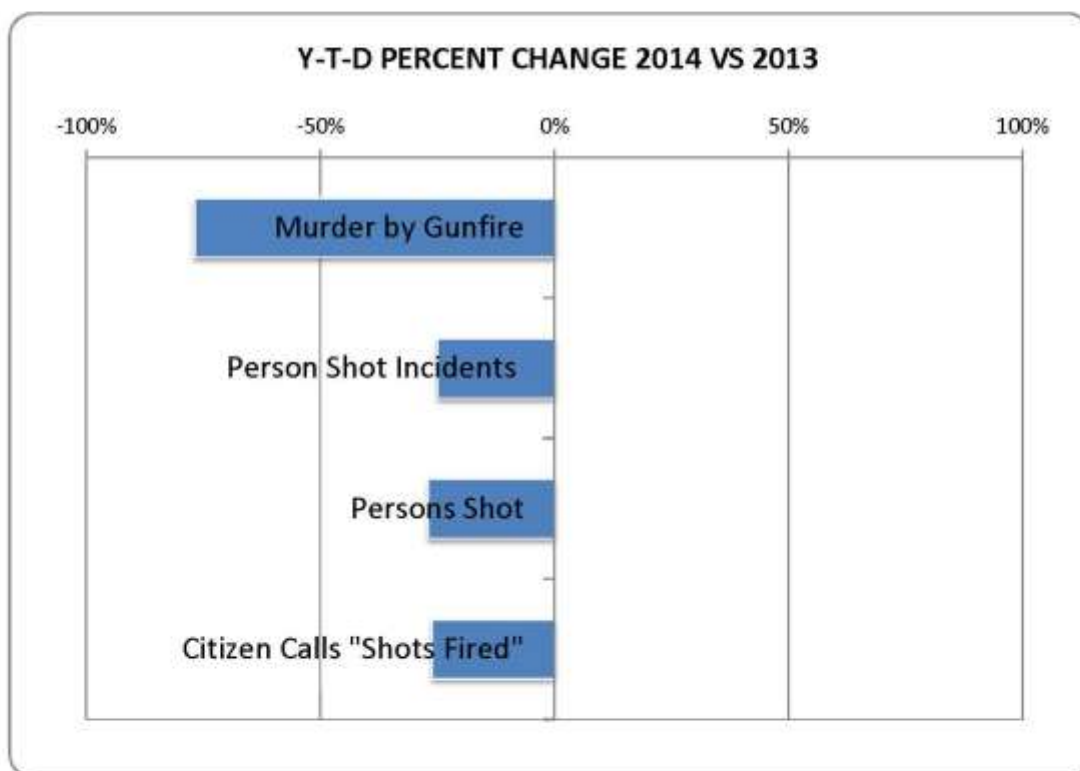




## SHOOTINGS: YTD Thru DECEMBER of each year

	2010	2011	2012	2013	2014	(+, -)	%
Murder by Gunfire	11	12	9	13	3	-10	-77%
Incidents Where a Person is Shot (A)	85	88	73	68	51	-17	-25%
Total Persons Shot (includes Murder)	106	98	87	78	57	-21	-27%
Citizen Calls "Shots Fired"	1024	1192	1074	800	591	-209	-26%
ShotSpotter Alerts (B)	NA	NA	NA	NA	274	NA	NA



(A) *Person Shot* includes any person coming into direct contact with the firearm's projectile, e.g., bullet, buckshot, etc. Person Shot does not include accidental, air-gun, or self-inflicted. Does not include Justifiable Homicide.

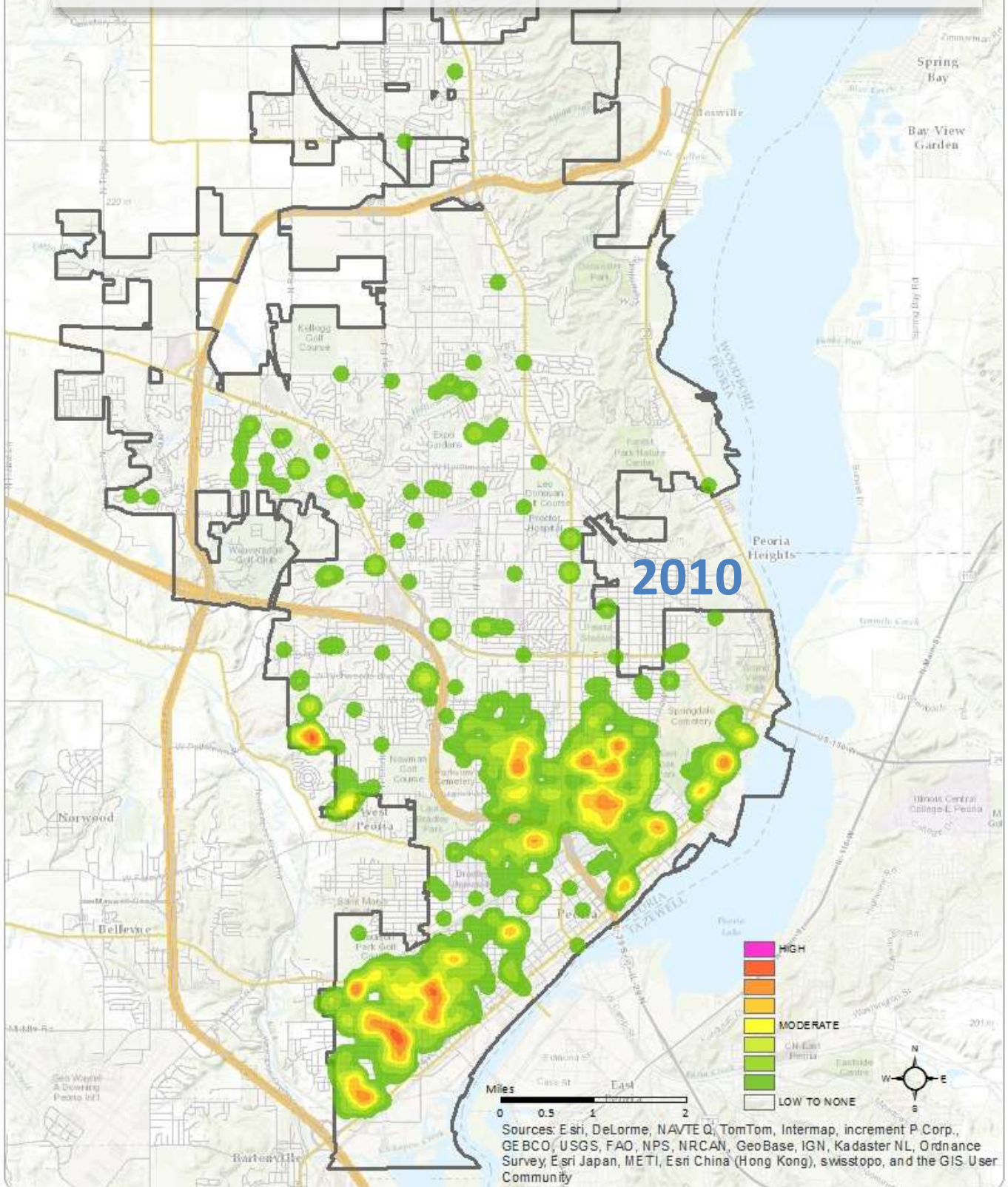
(B) *ShotSpotter Alerts* initiated 11/19/2013. Includes only those alerts where citizens do not call Police to report "Shots Fired". Counts include unauthorized gunfire only. Does not include duplicate alerts, fireworks, automobile backfire, etc.

dontshootpeoria.com

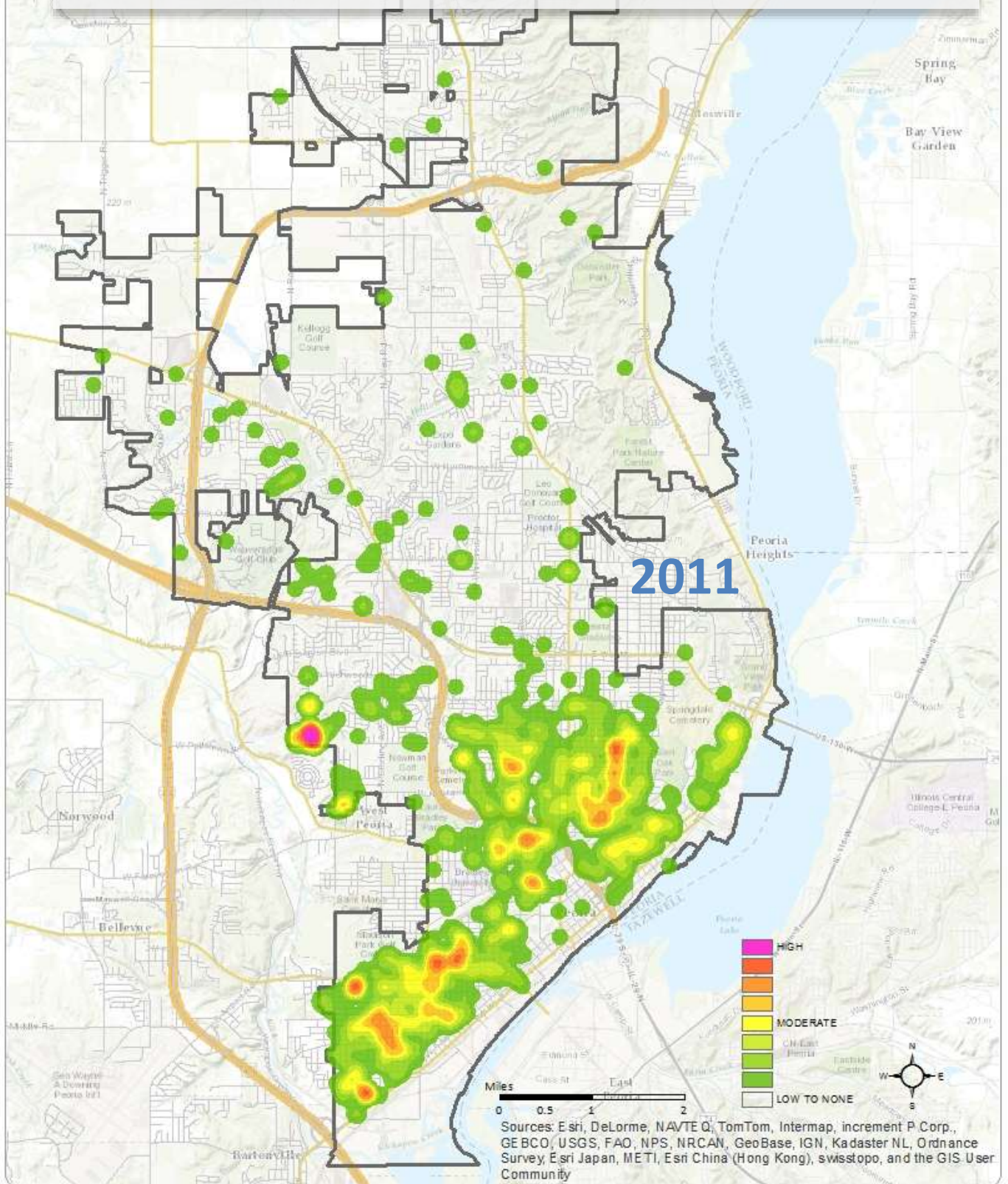
dontshootpeoria.com

 **ShotSpotter®**

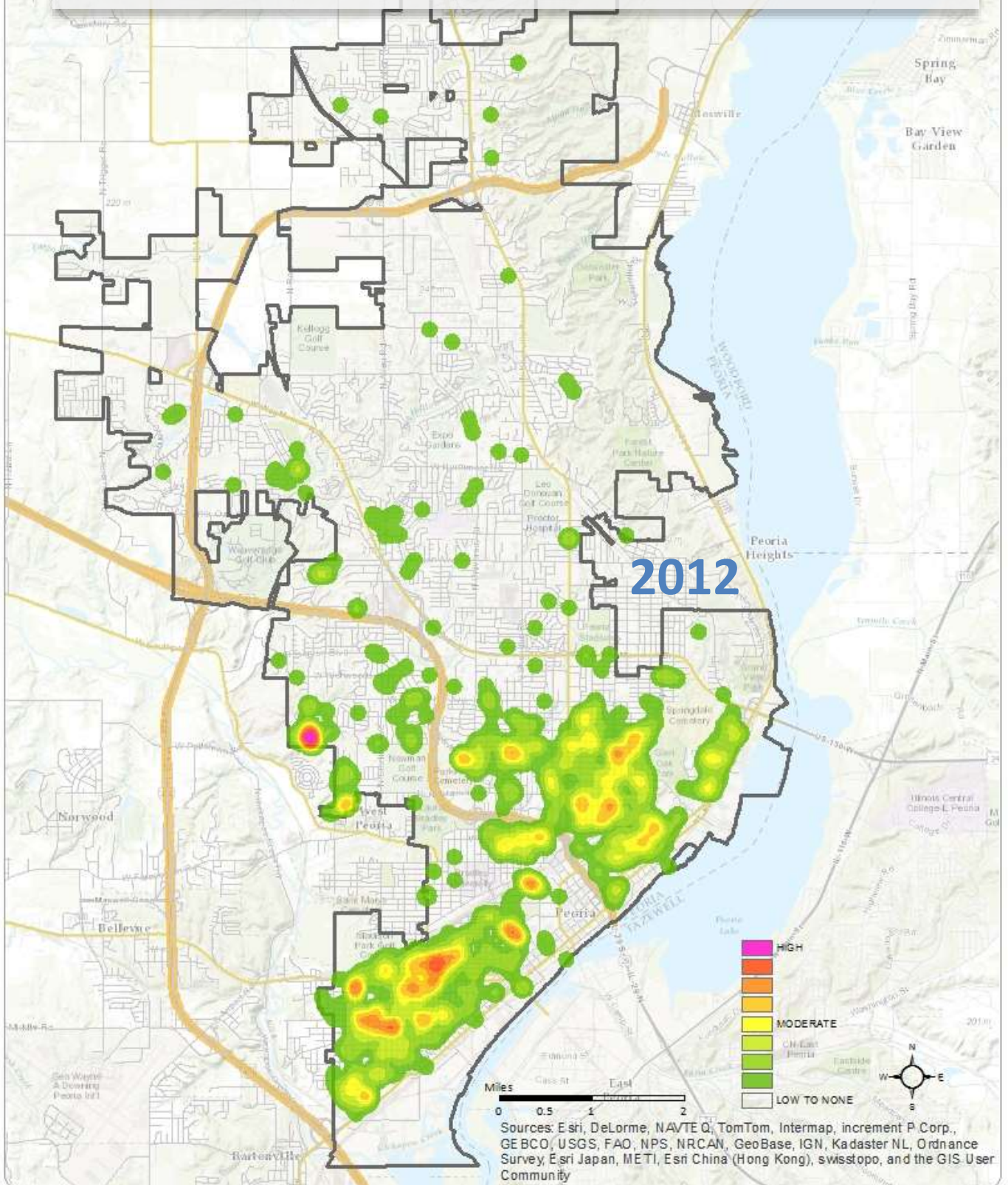
# 2010 DATA TO SST "SHOTS FIRED"



# 2011 DATA TO SST "SHOTS FIRED"



# 2012 DATA TO SST "SHOTS FIRED"



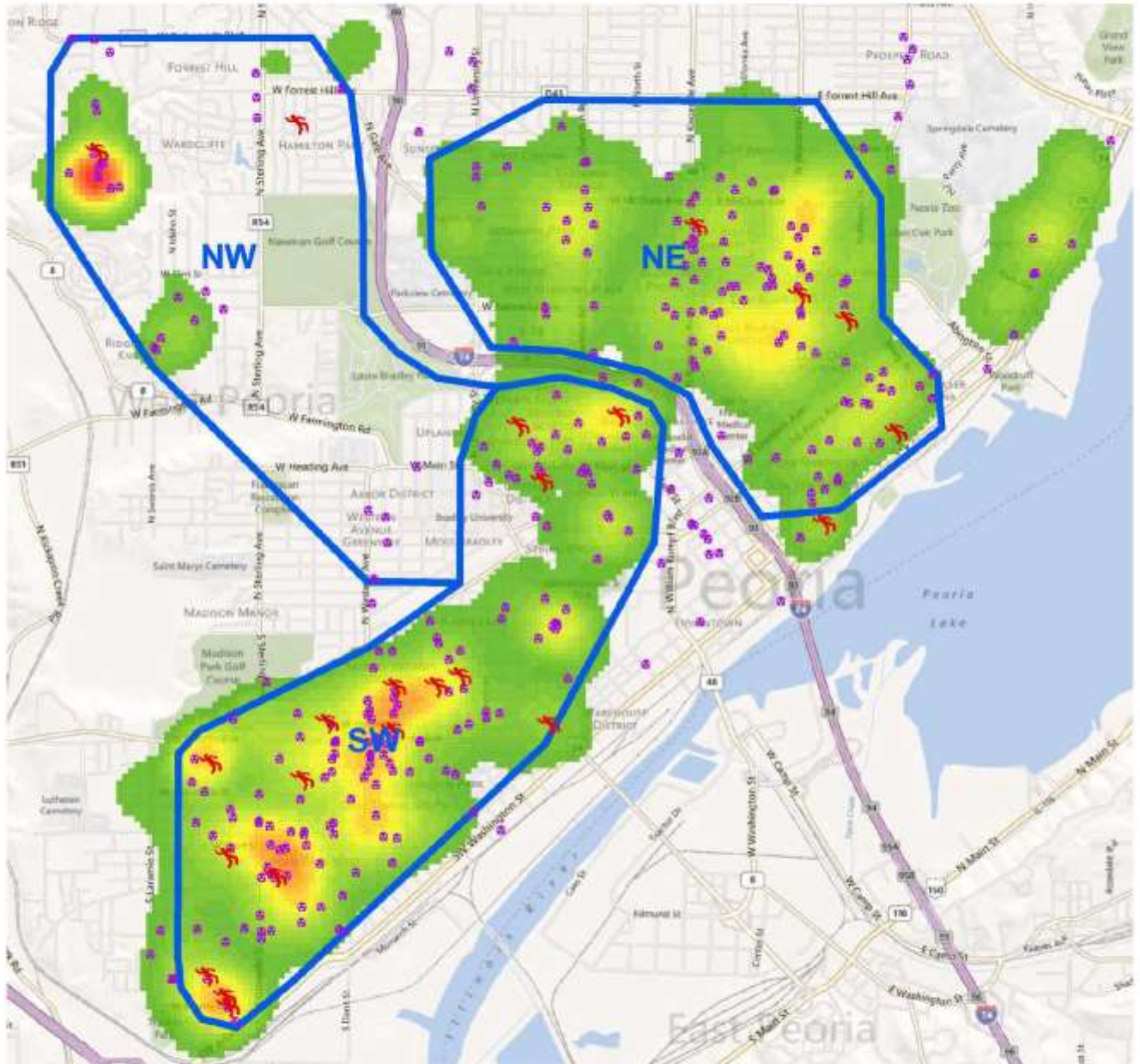
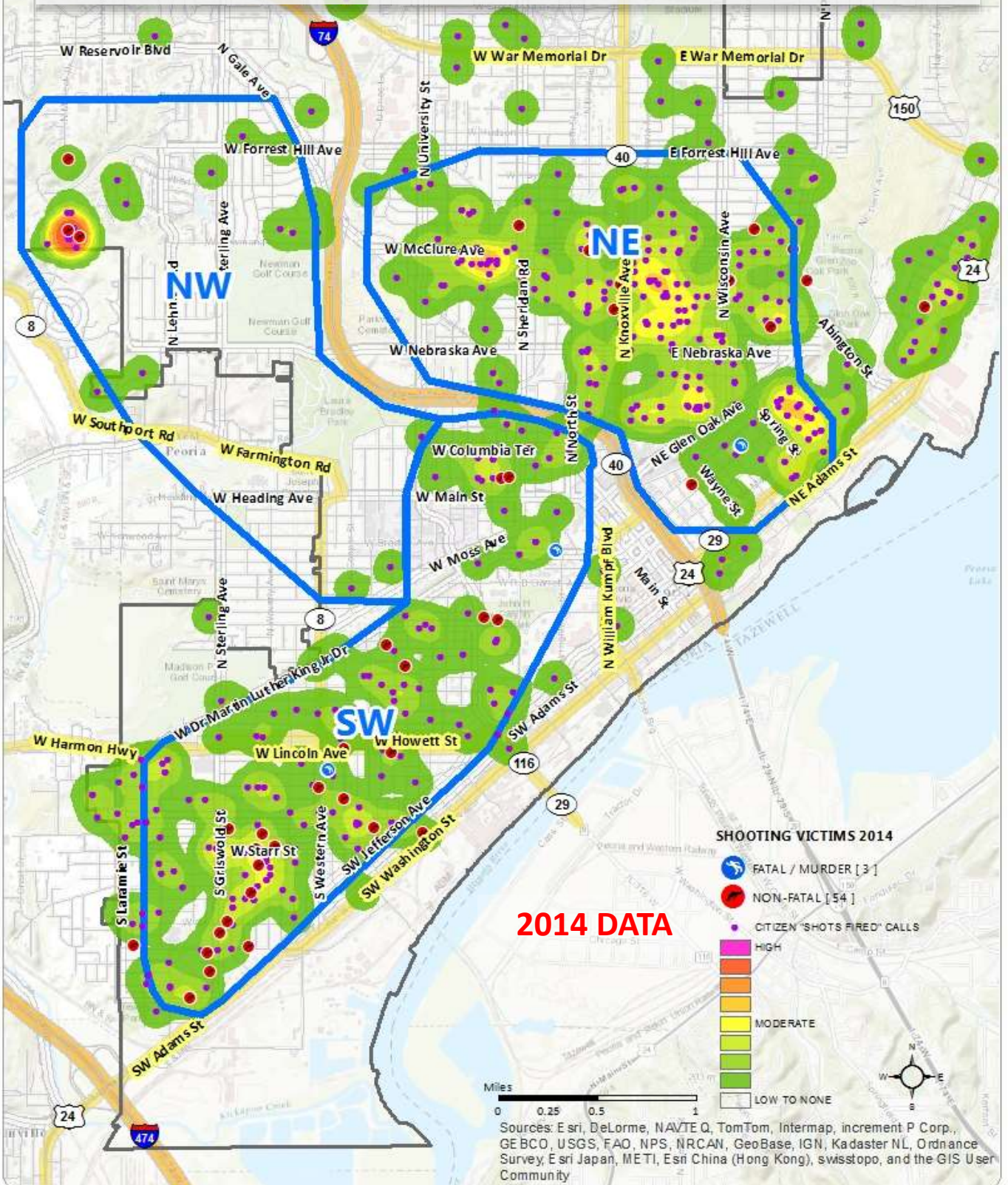


Figure 1: Proposed Coverage Areas for ShotSpotter Flex

NW = 3.0 Square Miles  
NE = 3.0 Square Miles  
SW = 3.0 Square Miles

**JANUARY 1, 2010 – JUNE 10, 2012 DATA**

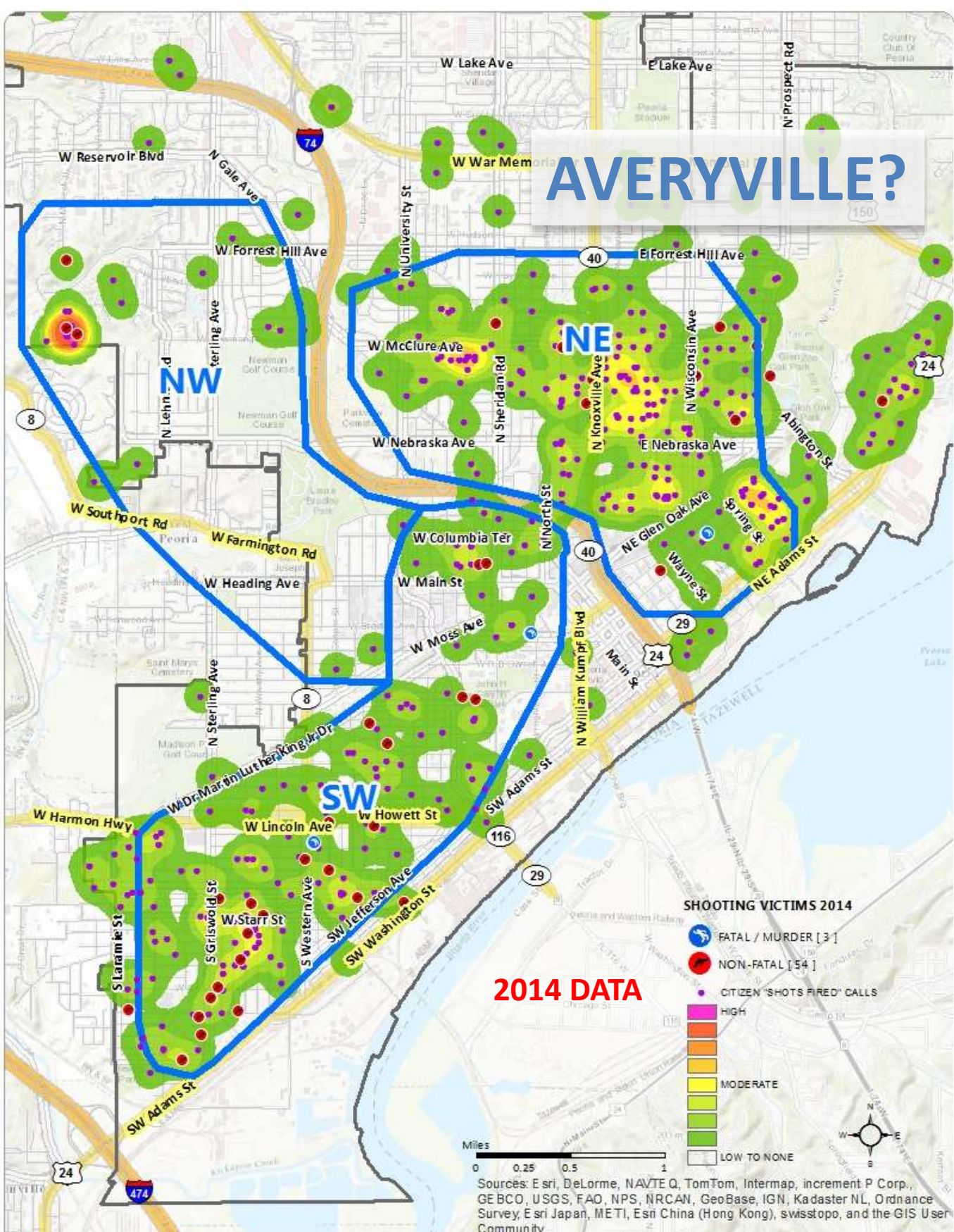
# 2014 DATA WITH SST BORDERS



PEORIA SHOTSPOTTER\_NE\_CITIZEN "SHOTS FIRED" / CAD 1410-SELECT1420\_SHOOTING VICTIMS\_2014



# AVERYVILLE?



**2014 DATA**

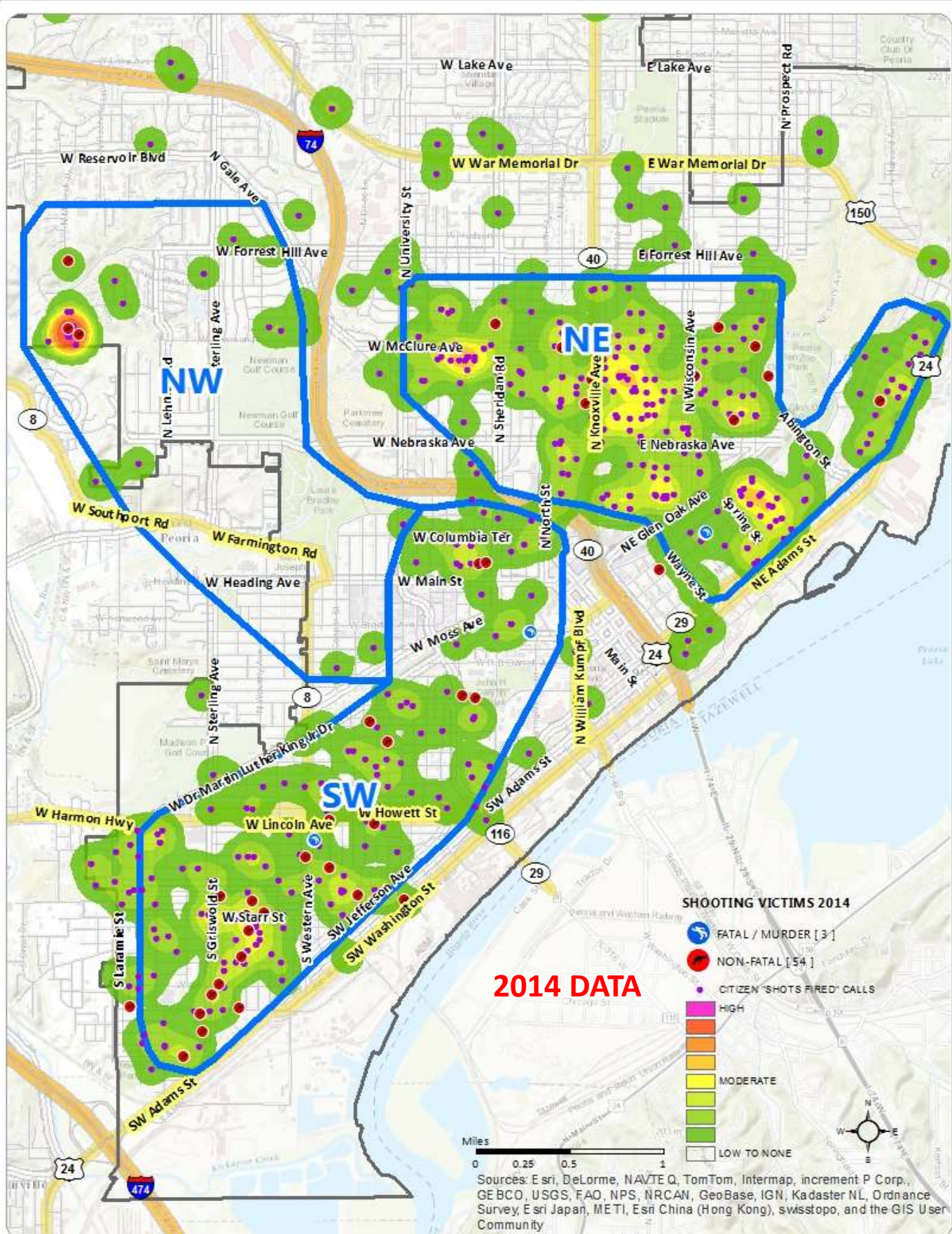
**SHOOTING VICTIMS 2014**

- FATAL / MURDER [ 3 ]
- NON-FATAL [ 54 ]
- CITIZEN 'SHOTS FIRED' CALLS
- HIGH
- MODERATE
- MODERATE
- MODERATE
- LOW TO NONE
- LOW TO NONE

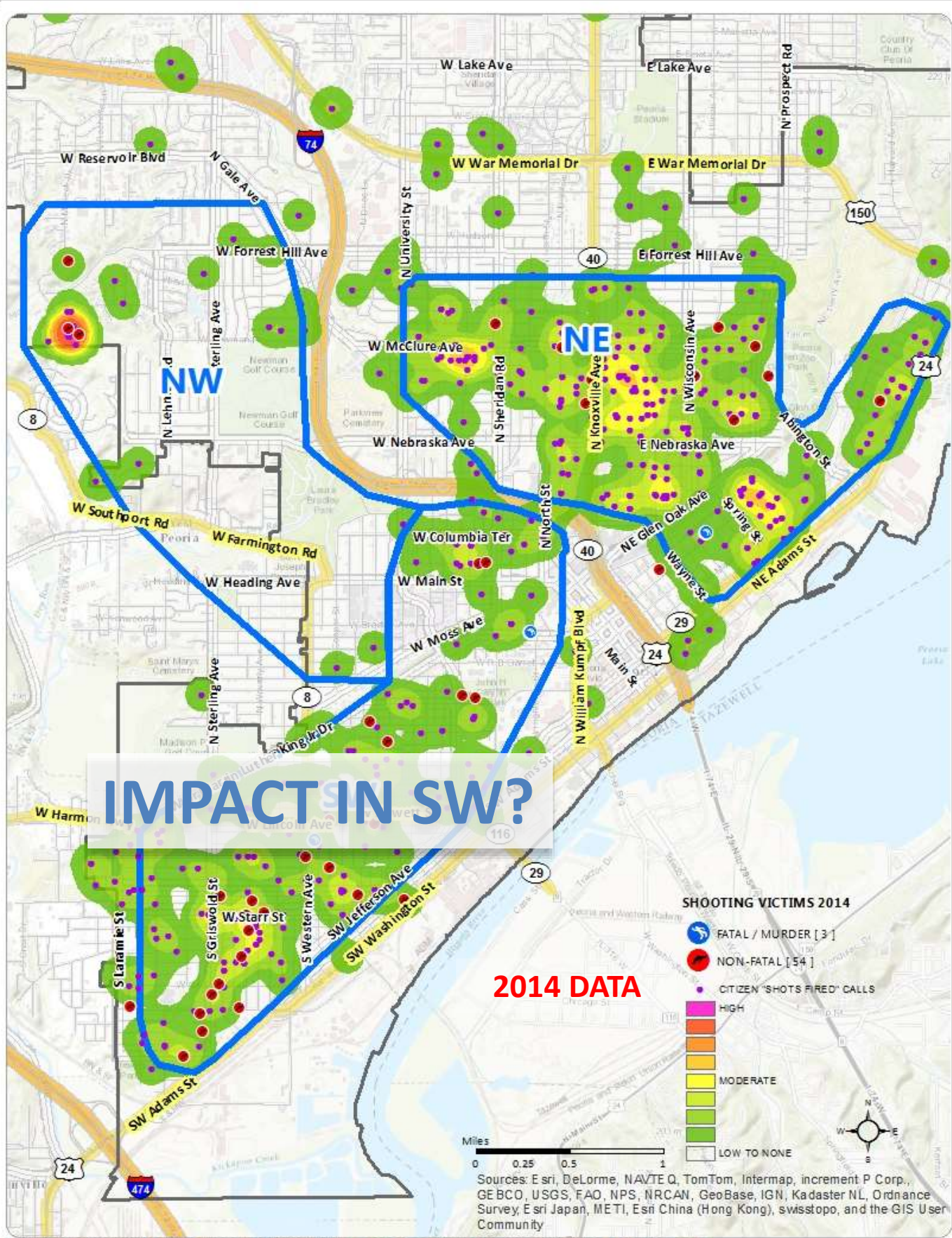
Miles  
0 0.25 0.5 1

Sources: Esri, DeLorme, NAVTEQ, TomTom, Intermap, increment P Corp., GEBCO, USGS, FAO, NPS, NRCAN, GeoBase, IGN, Kadaster NL, Ordnance Survey, Esri Japan, METI, Esri China (Hong Kong), swisstopo, and the GIS User Community

PEORIA SHOTSPOTTER\_NE\_CITIZEN "SHOTS FIRED" / CAD 1410-SELECT1420\_SHOOTING VICTIMS\_2014

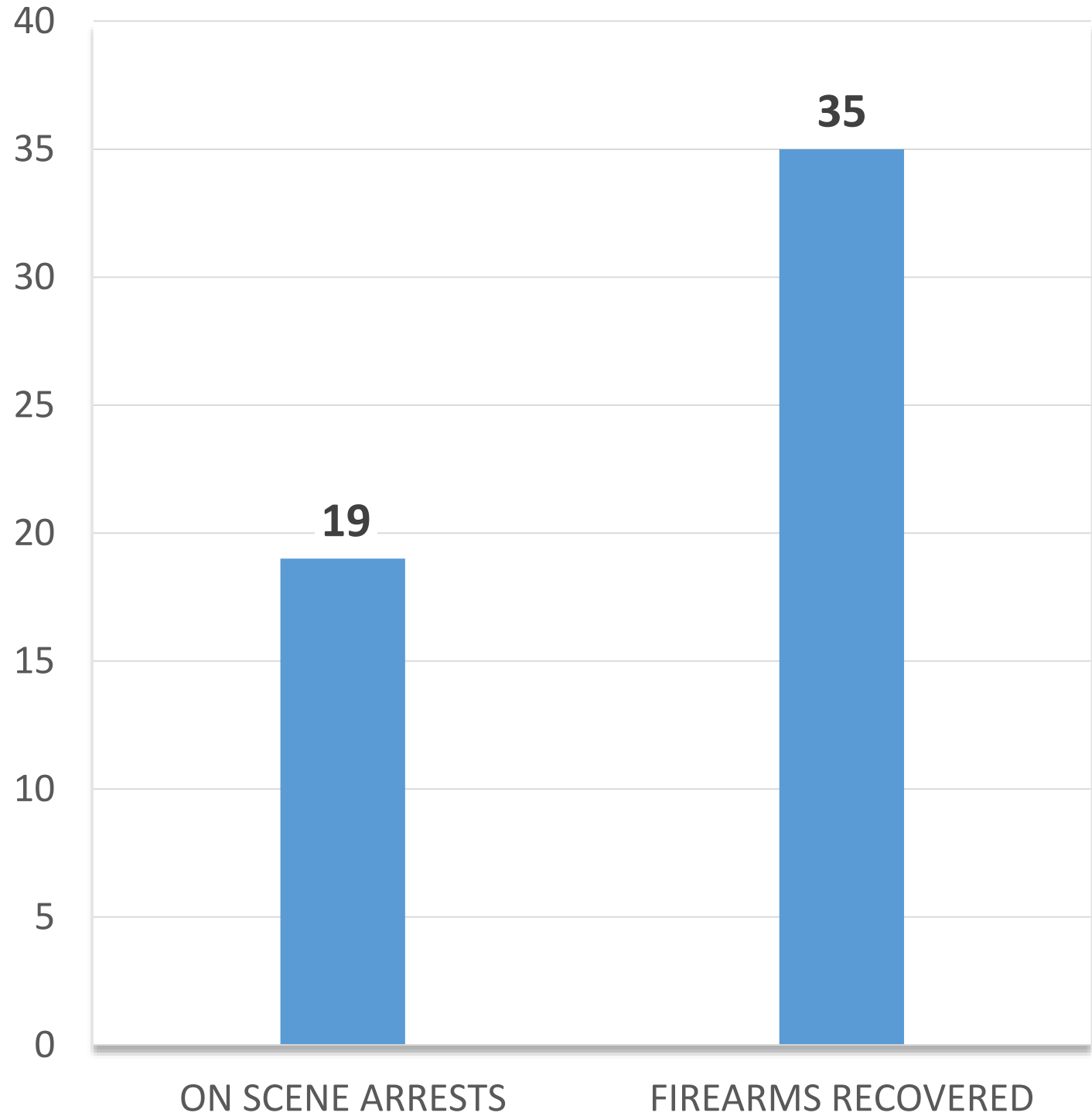


PEORIA SHOTSPOTTER\_NE\_CITIZEN "SHOTS FIRED" / CAD 1410-SELECT1420\_SHOOTING VICTIMS\_2014



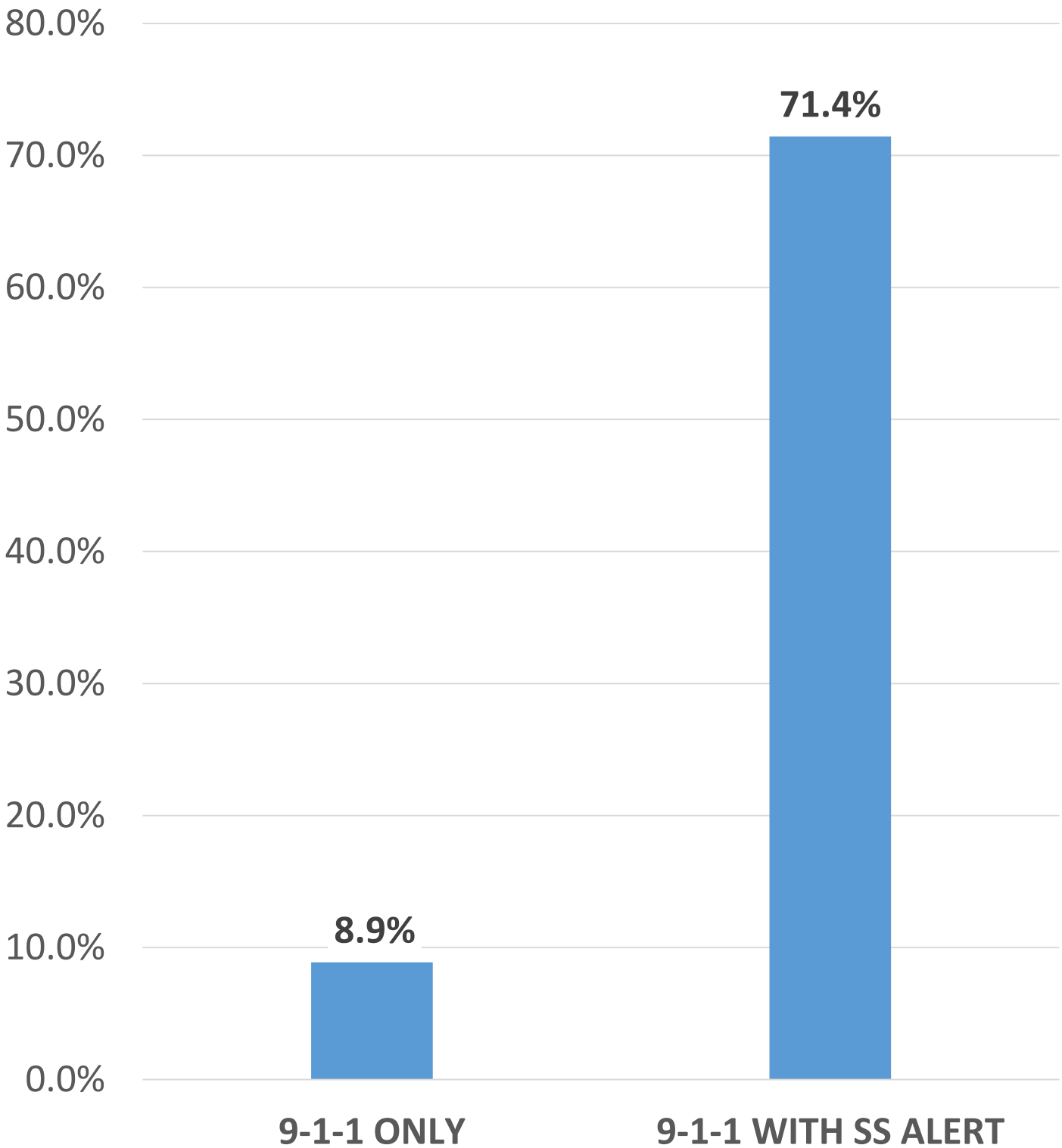
PEORIA SHOTSPOTTER\_NE\_CITIZEN "SHOTS FIRED" / CAD 1410-SELECT1420\_SHOOTING VICTIMS\_2014

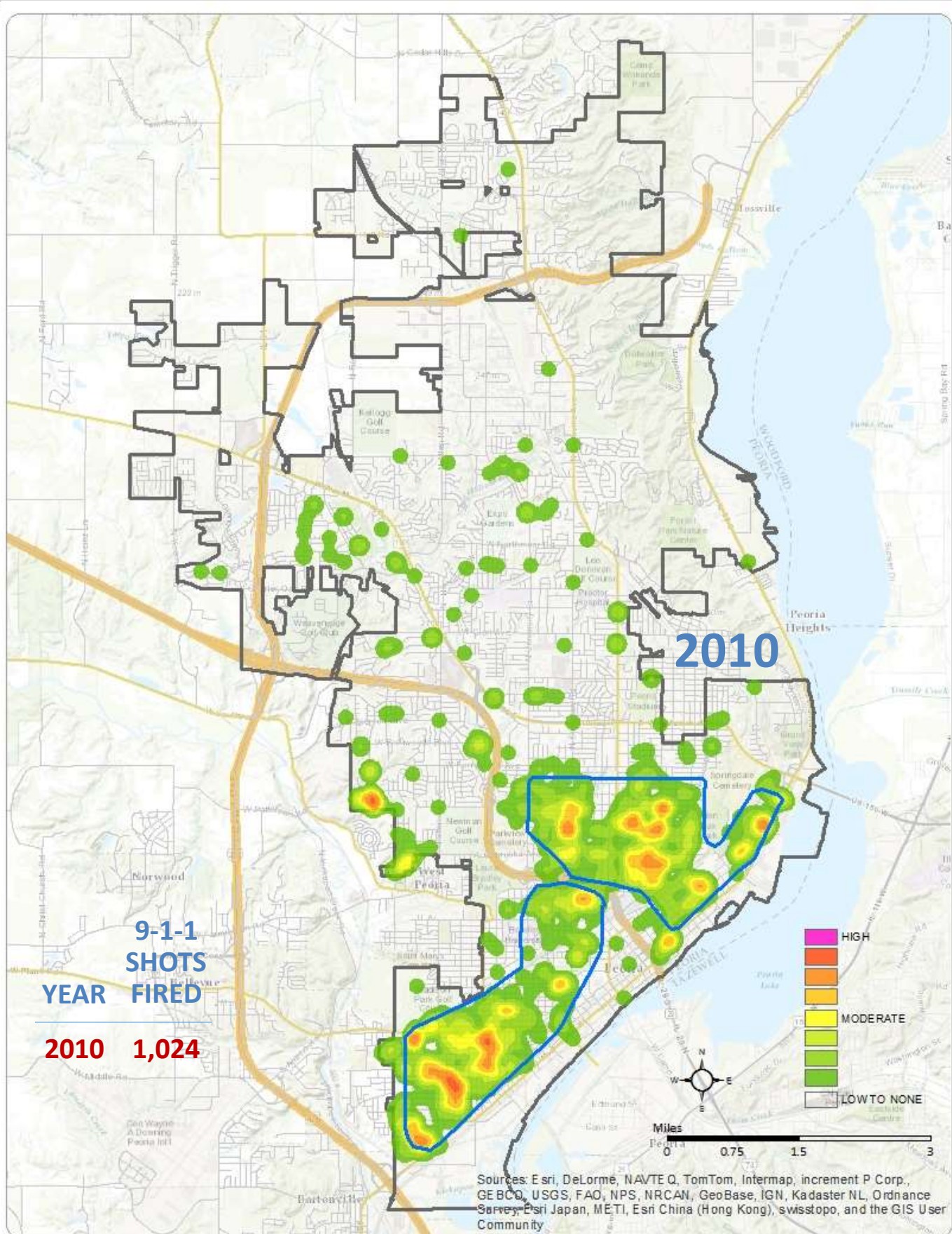
# SHOTSPOTTER ASSIST 2014



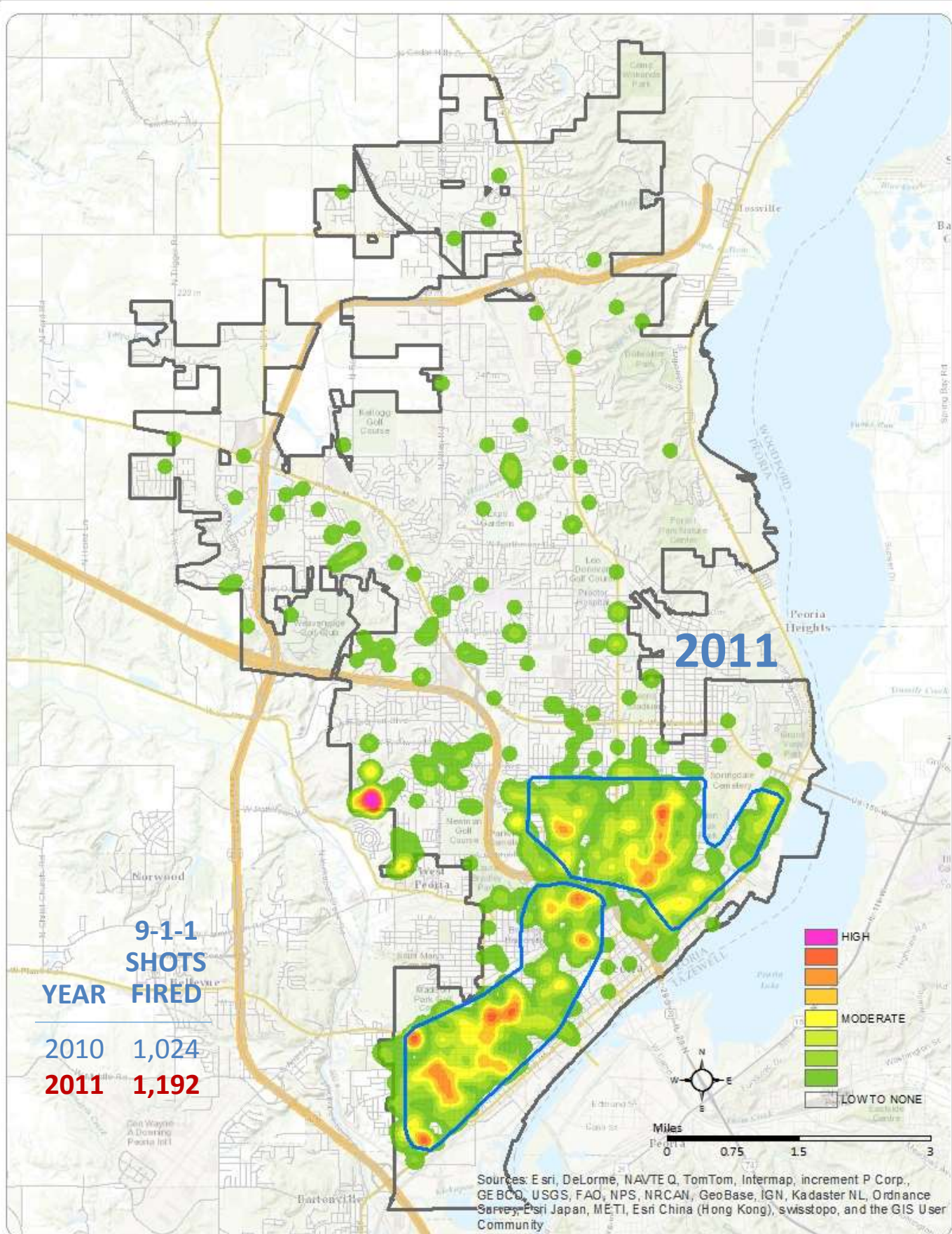
# EVIDENCE LOCATED

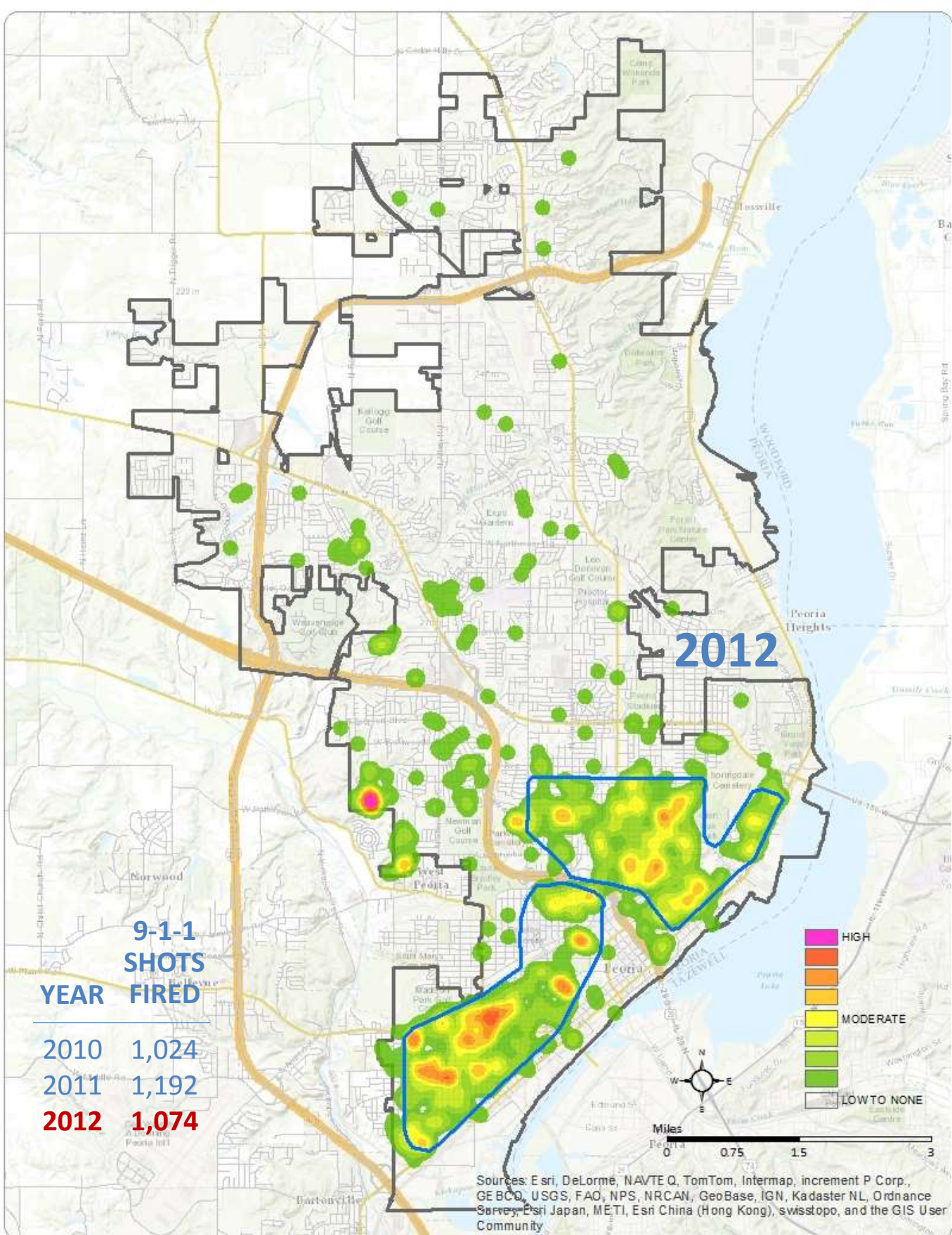
## CITIZEN 9-1-1 OR **9-1-1 WITH SS ALERT**





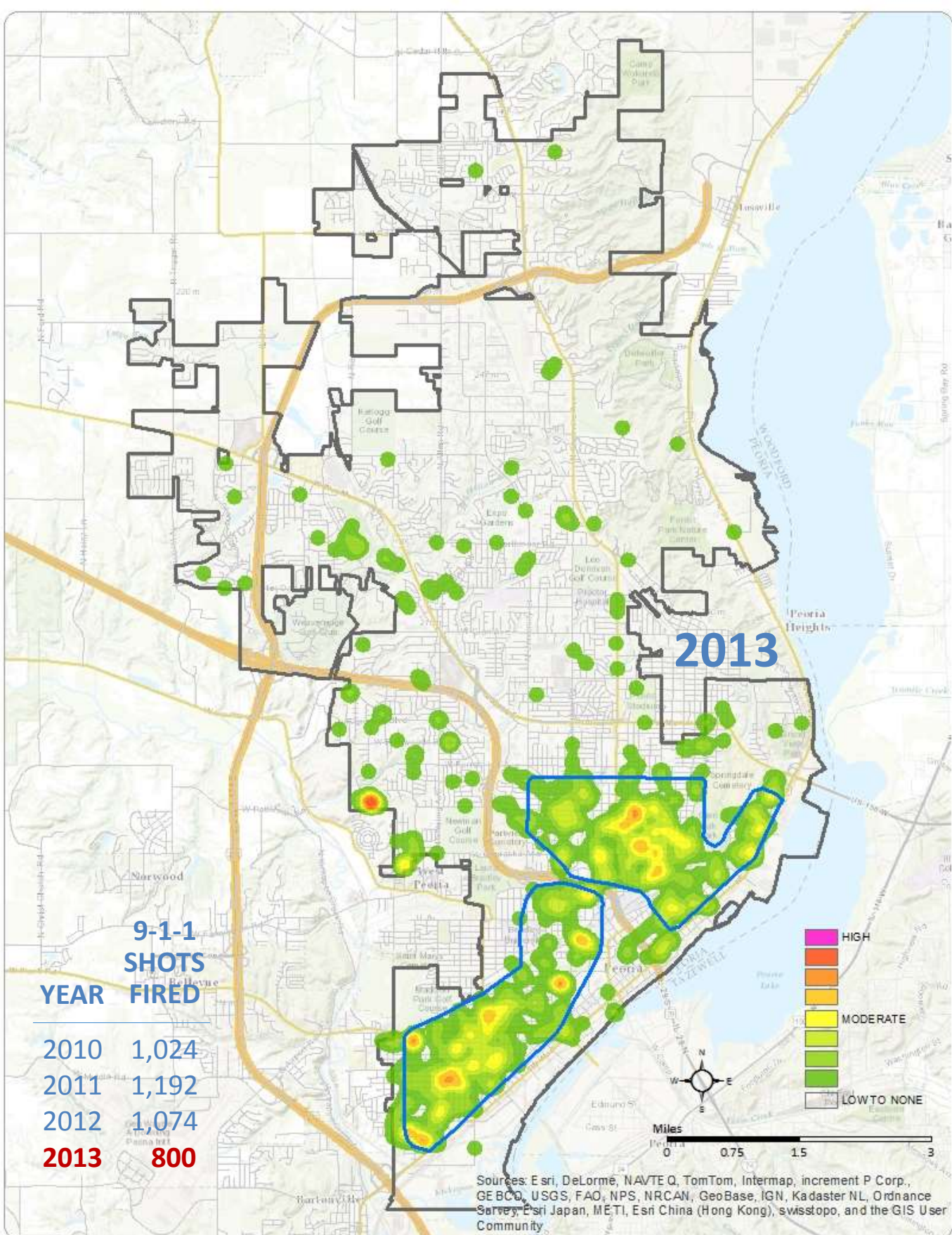
PEORIA SHOTSPOTTER\_NE\_CITIZEN "SHOTS FIRED" / CAD 1410



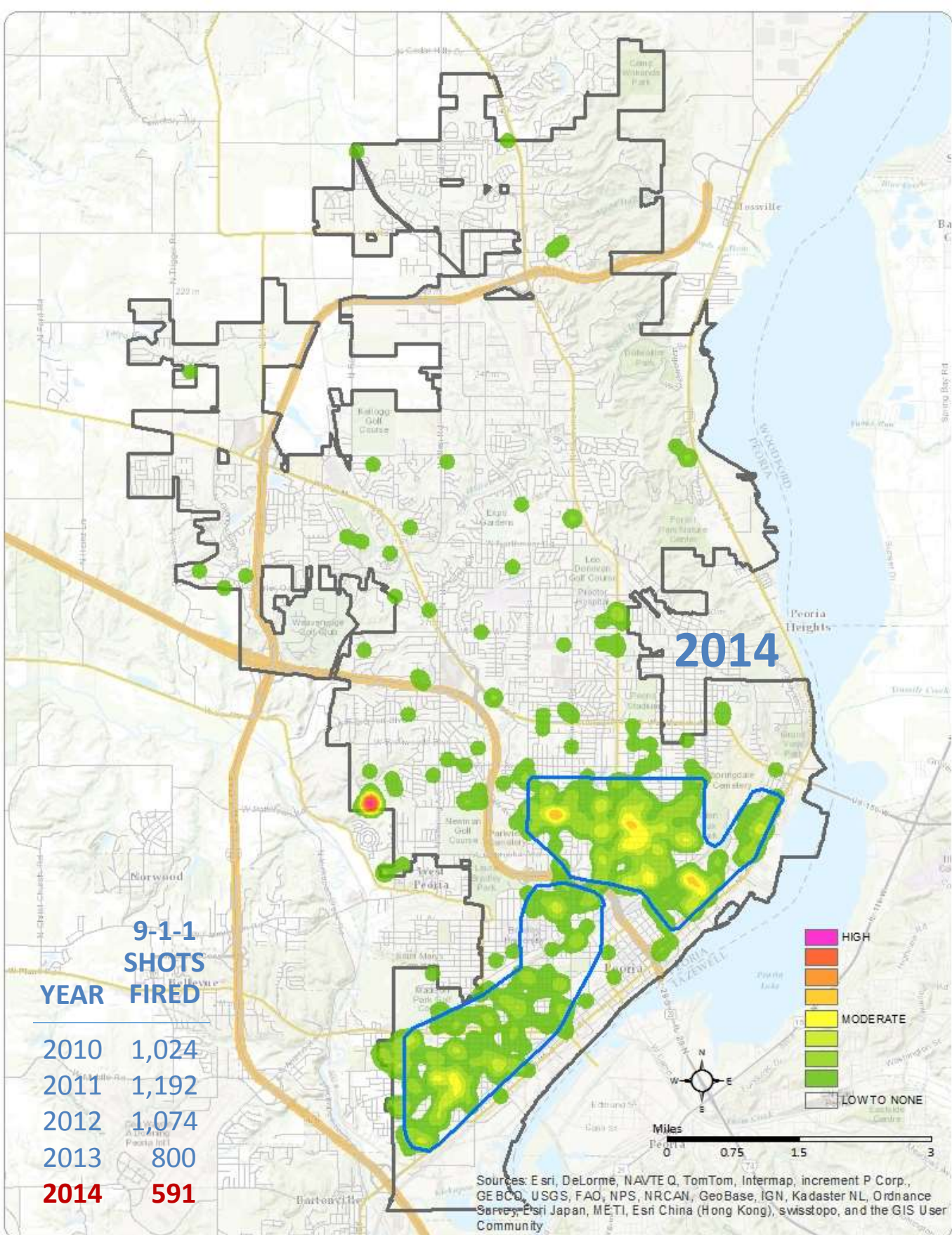


PEORIA SHOTSPOTTER\_NE\_CITIZEN "SHOTS FIRED" / CAD 1410



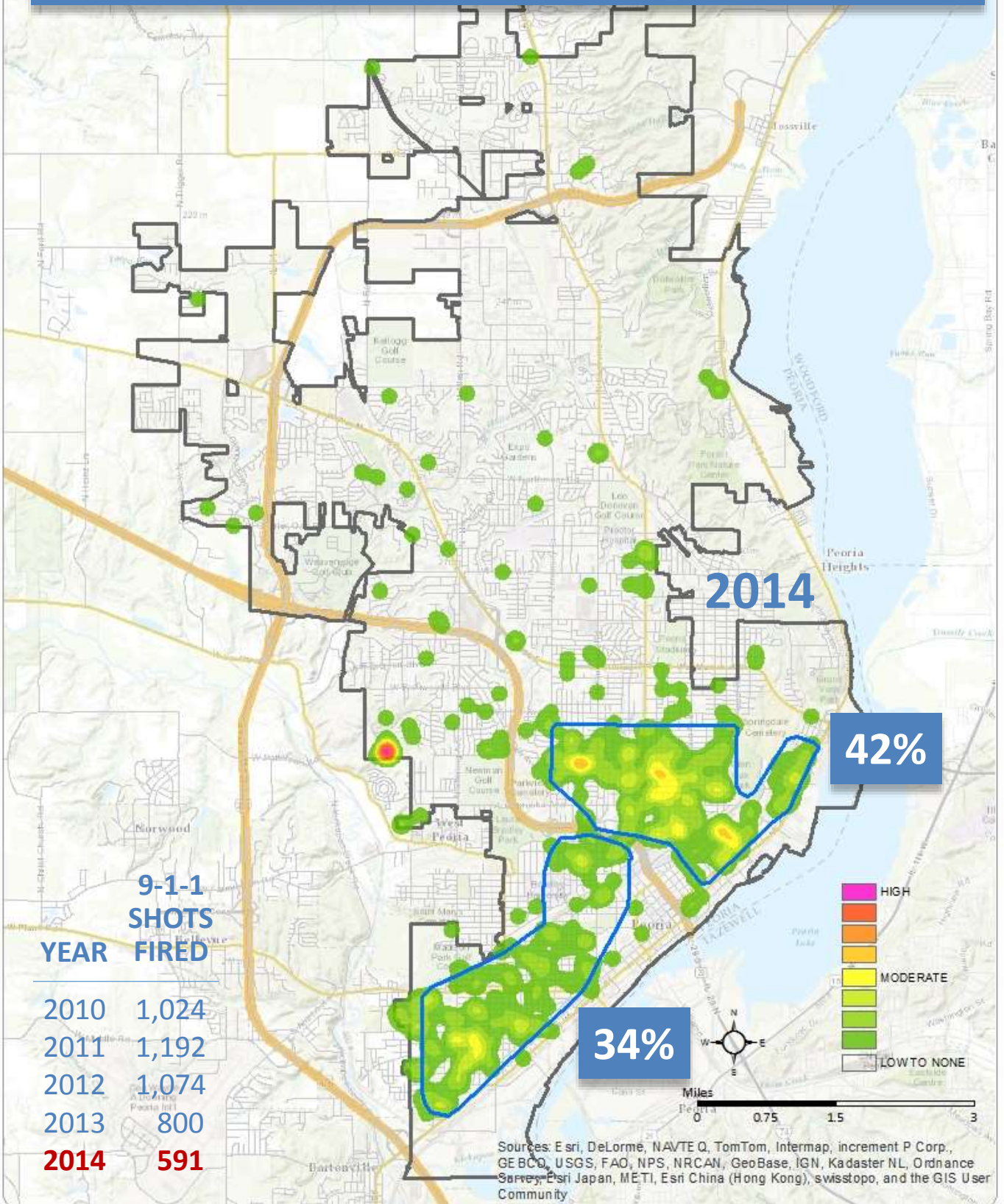


Sources: Esri, DeLorme, NAVTEQ, TomTom, Intermap, increment P Corp., GEBCO, USGS, FAO, NPS, NRCAN, GeoBase, IGN, Kadaster NL, Ordnance Survey, Esri Japan, METI, Esri China (Hong Kong), swisstopo, and the GIS User Community

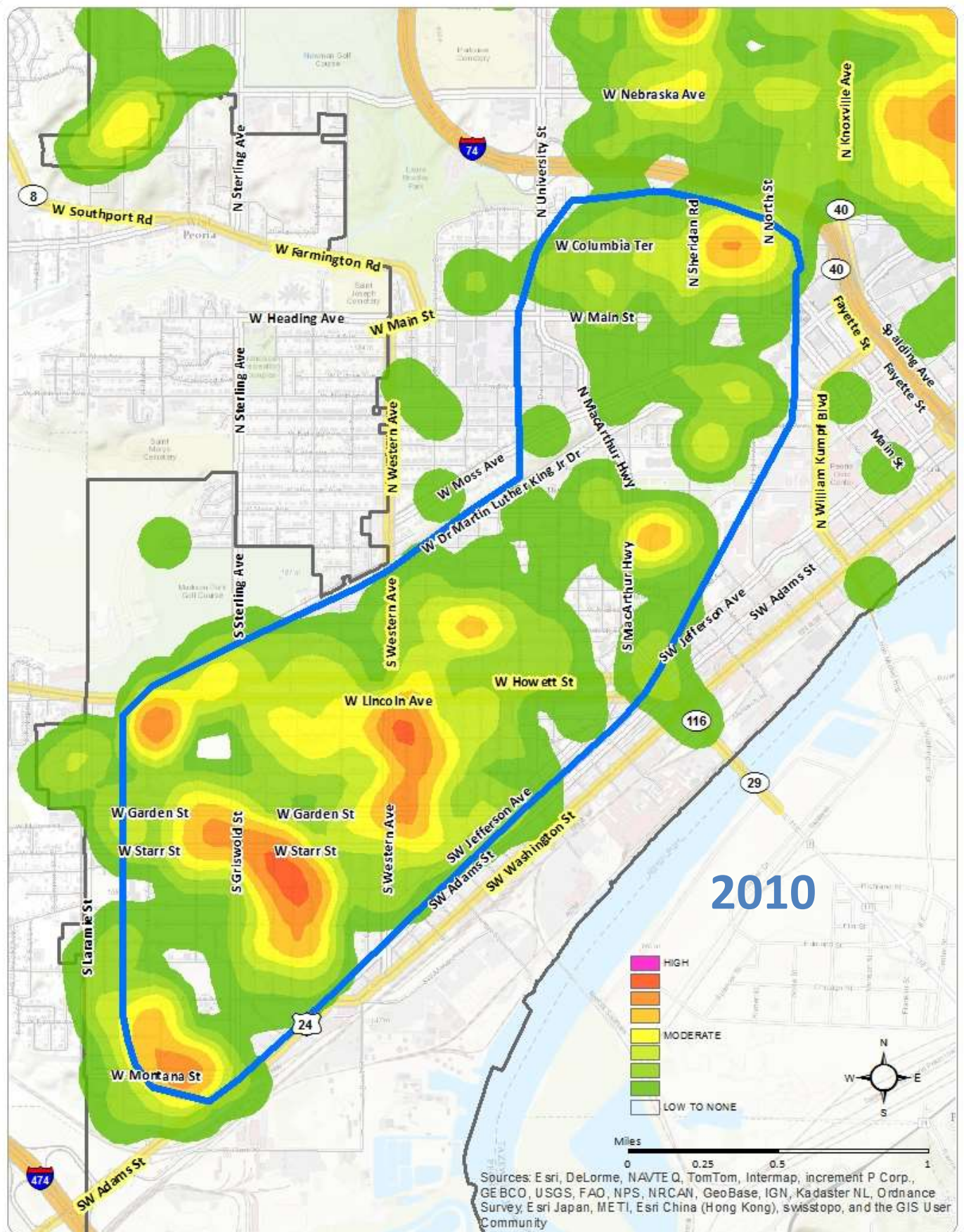


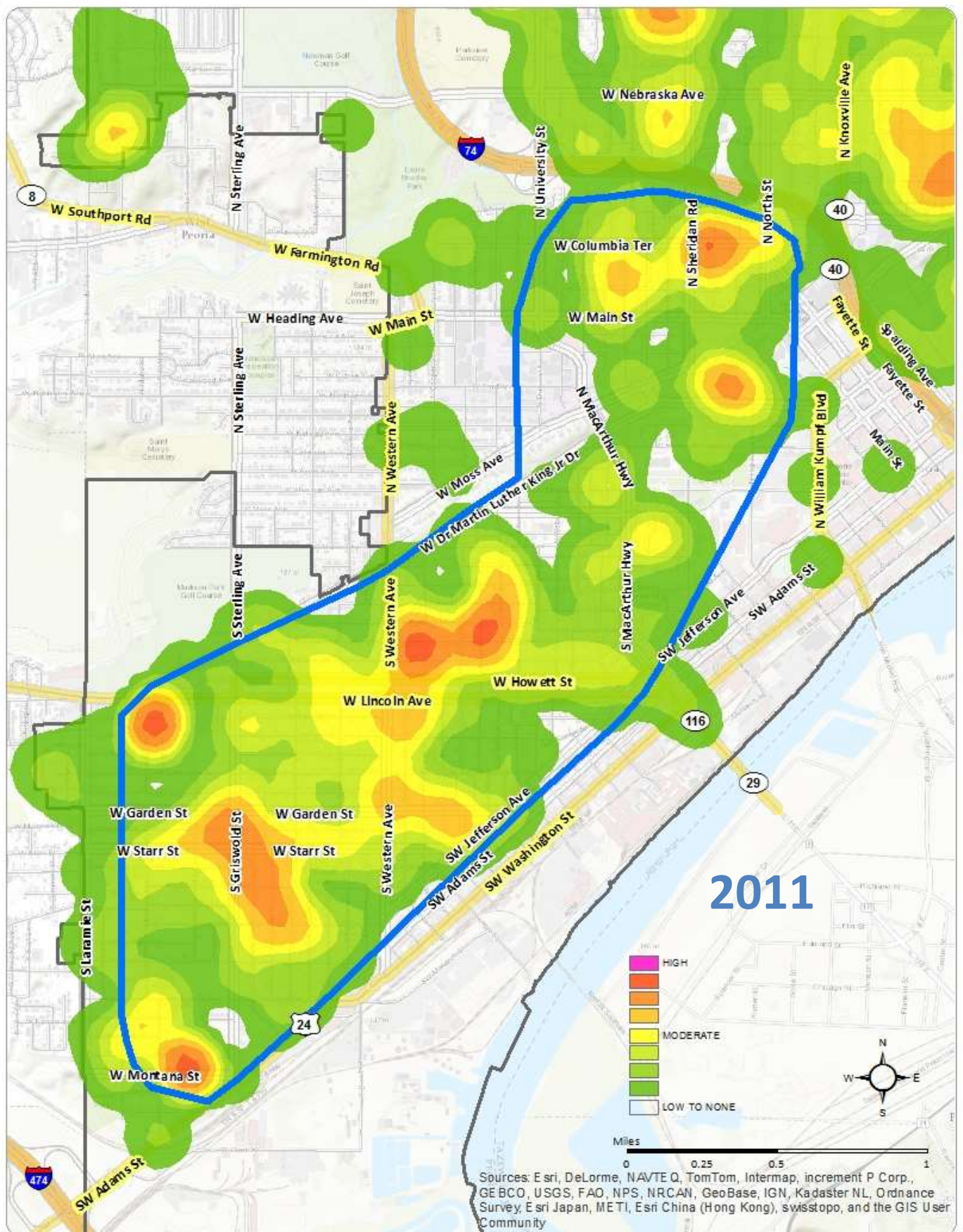
Sources: Esri, DeLorme, NAVTEQ, TomTom, Intermap, increment P Corp., GEBCO, USGS, FAO, NPS, NRCAN, GeoBase, IGN, Kadaster NL, Ordnance Survey, Esri Japan, METI, Esri China (Hong Kong), swisstopo, and the GIS User Community

# 76% OF 2014 "SHOTS FIRED" CALLS IN SS ZONES

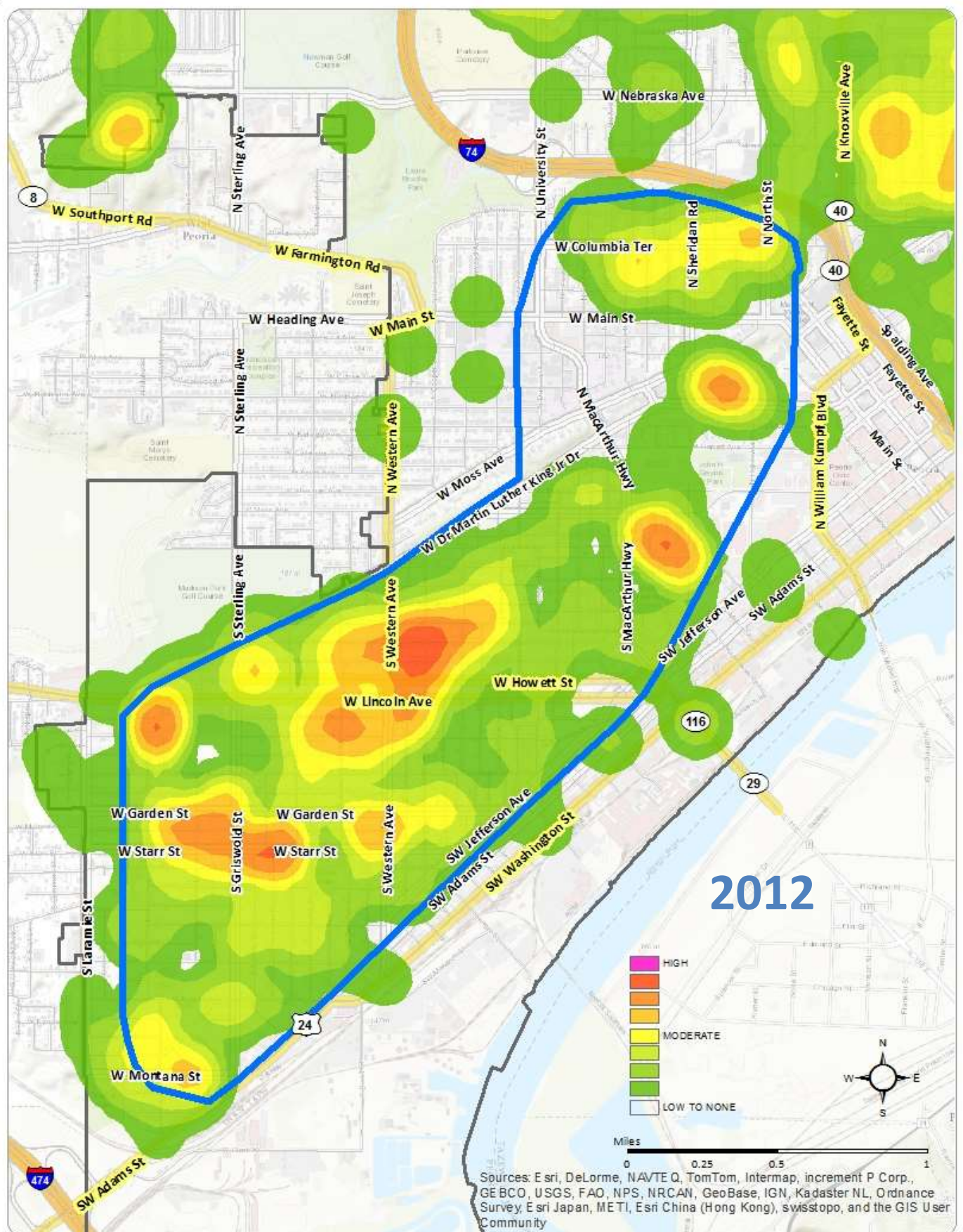


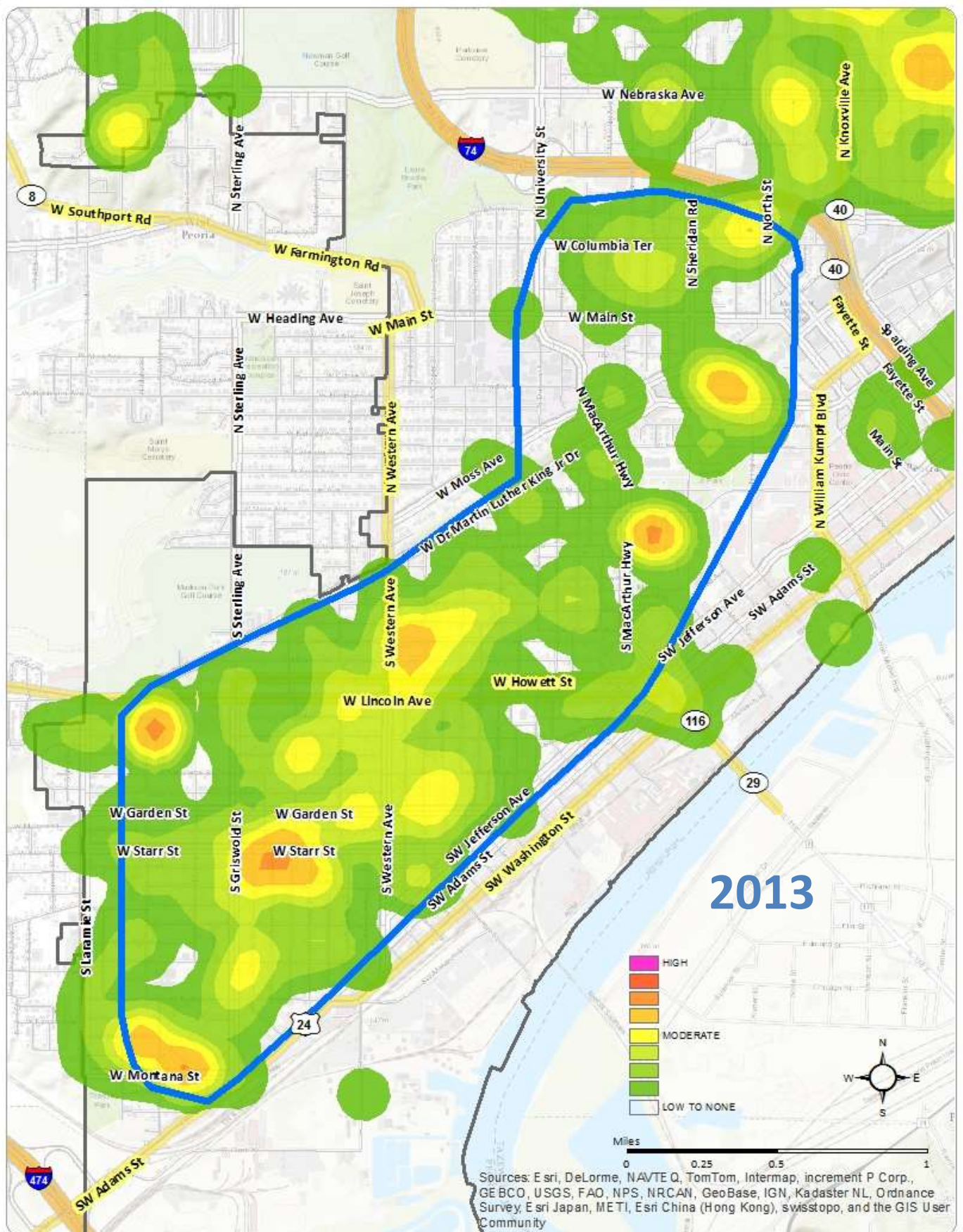
Sources: Esri, DeLorme, NAVTEQ, TomTom, Intermap, increment P Corp., GEBCO, USGS, FAO, NPS, NRCAN, GeoBase, IGN, Kadaster NL, Ordnance Survey, Esri Japan, METI, Esri China (Hong Kong), swisstopo, and the GIS User Community

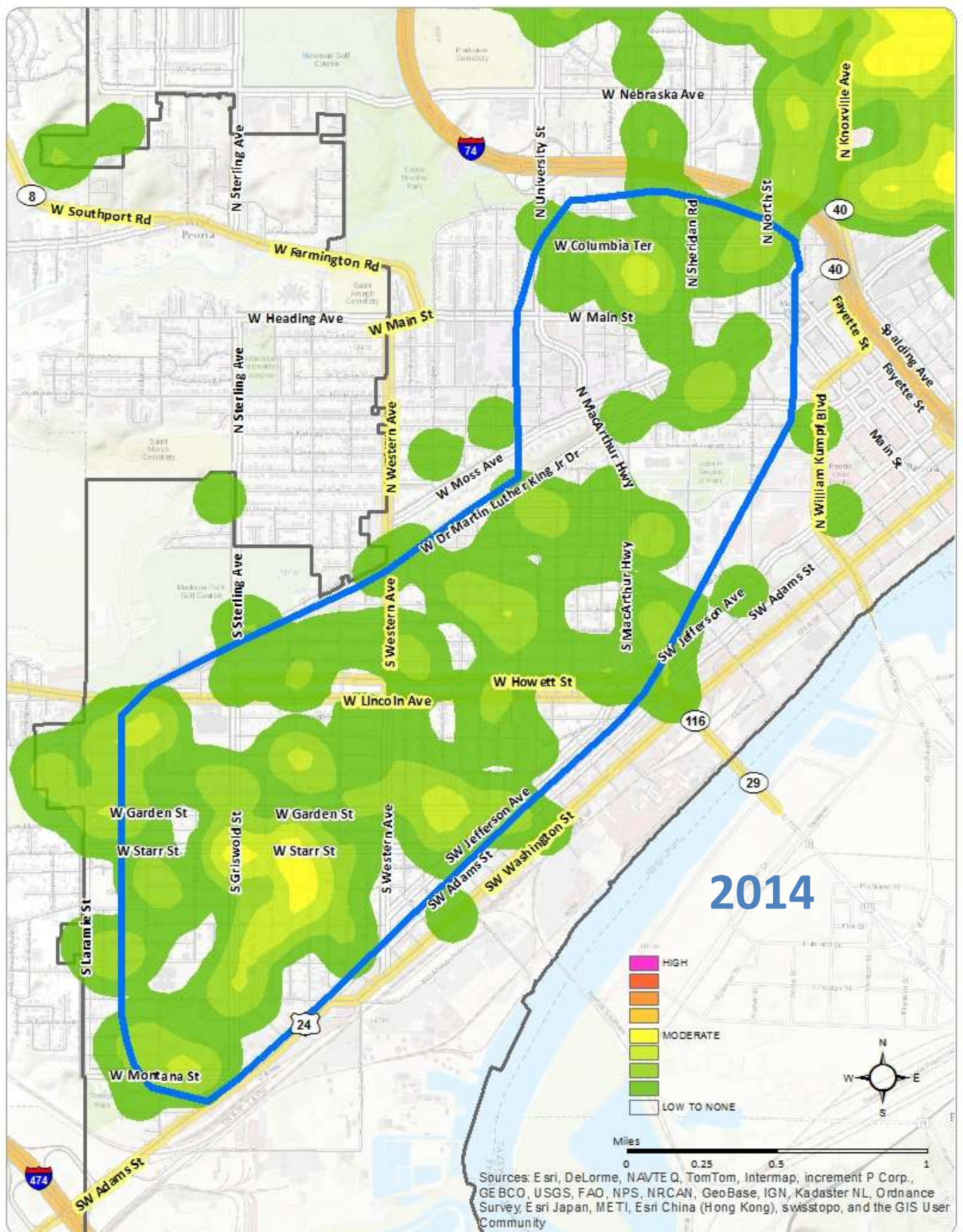




PEORIA SHOTSPOTTER\_CITIZEN "SHOTS FIRED" / CAD 1410

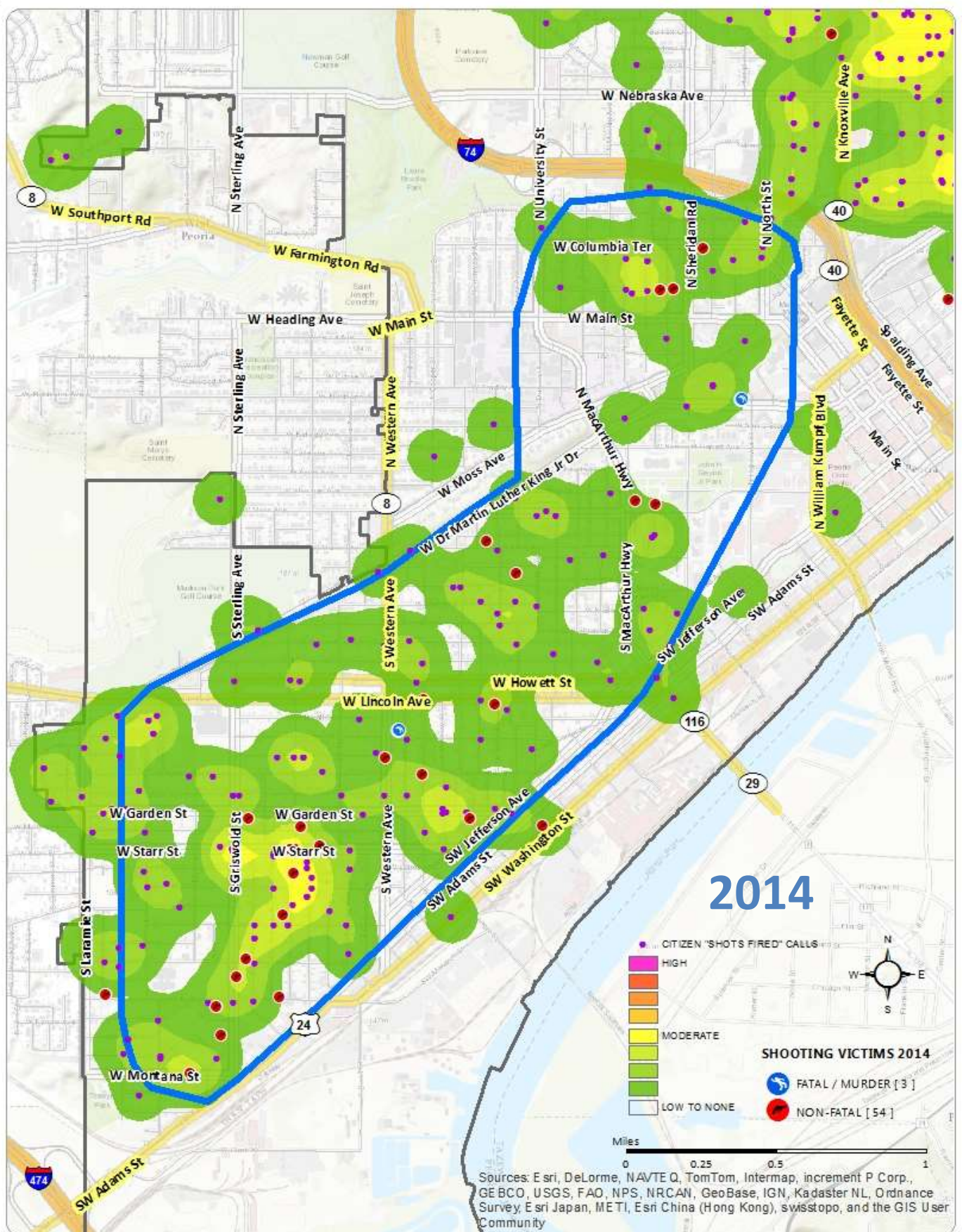




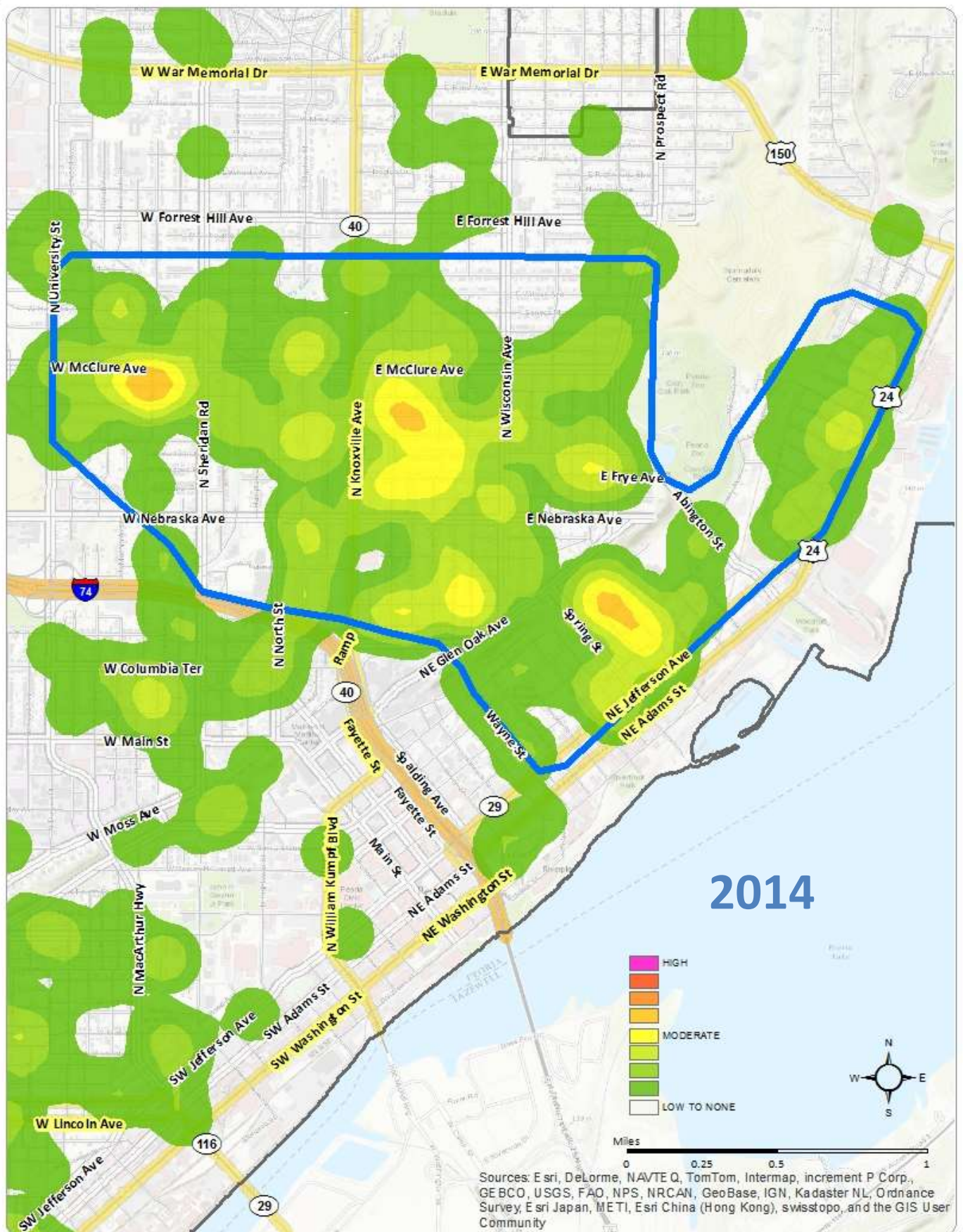


PEORIA SHOTSPOTTER\_NE\_CITIZEN "SHOTS FIRED" / CAD 1410-SELECT 1420\_2014

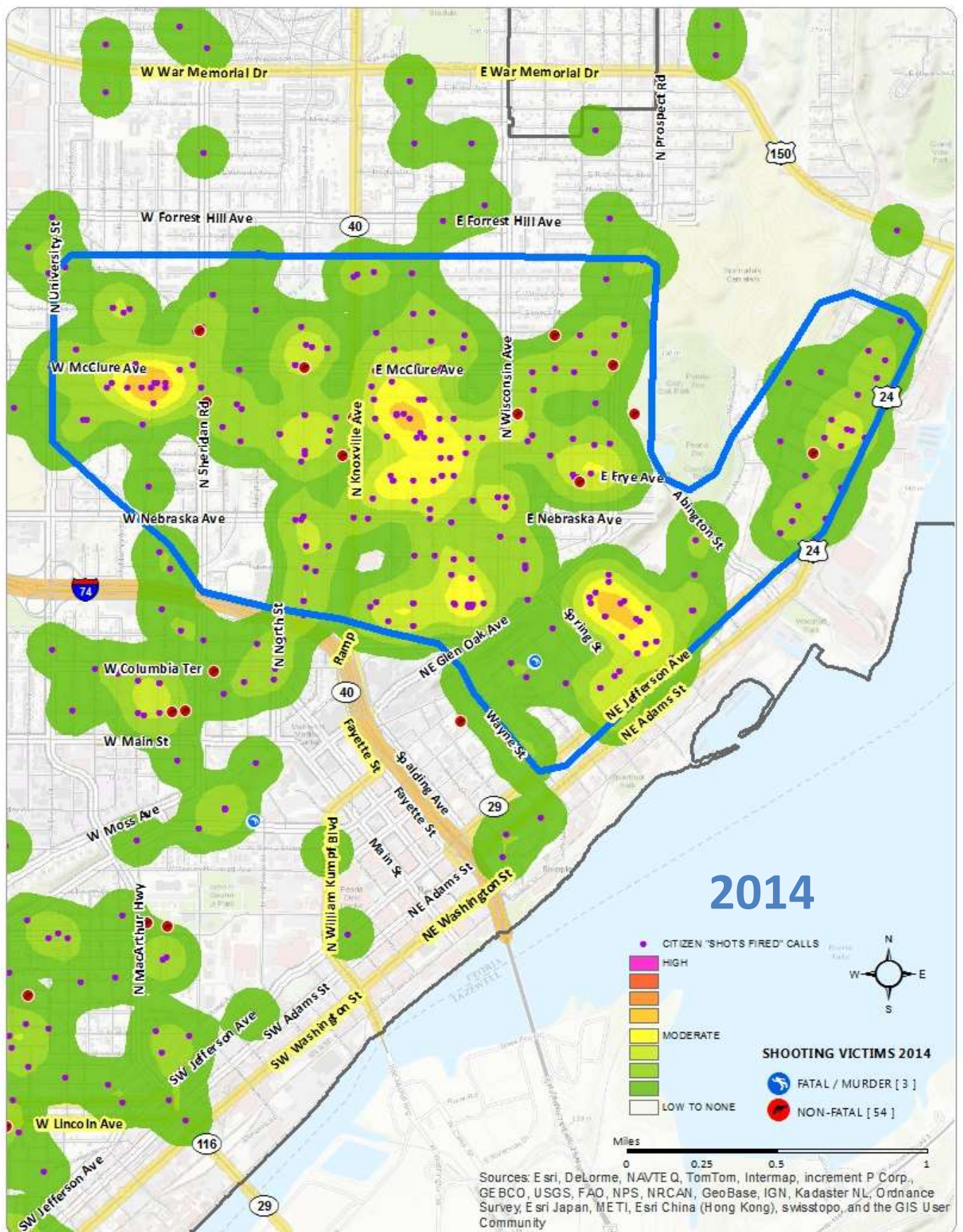




PEORIA SHOTSPOTTER\_NE\_CITIZEN "SHOTS FIRED" / CAD 1410-SELECT 1420\_2014



PEORIA SHOTSPOTTER\_NE\_CITIZEN "SHOTS FIRED" / CAD 1410-SELECT 1420\_2014



PEORIA SHOTSPOTTER\_NE\_CITIZEN "SHOTS FIRED" / CAD 1410-SELECT 1420\_2014

dontshootpeoria.com

 **ShotSpotter®**