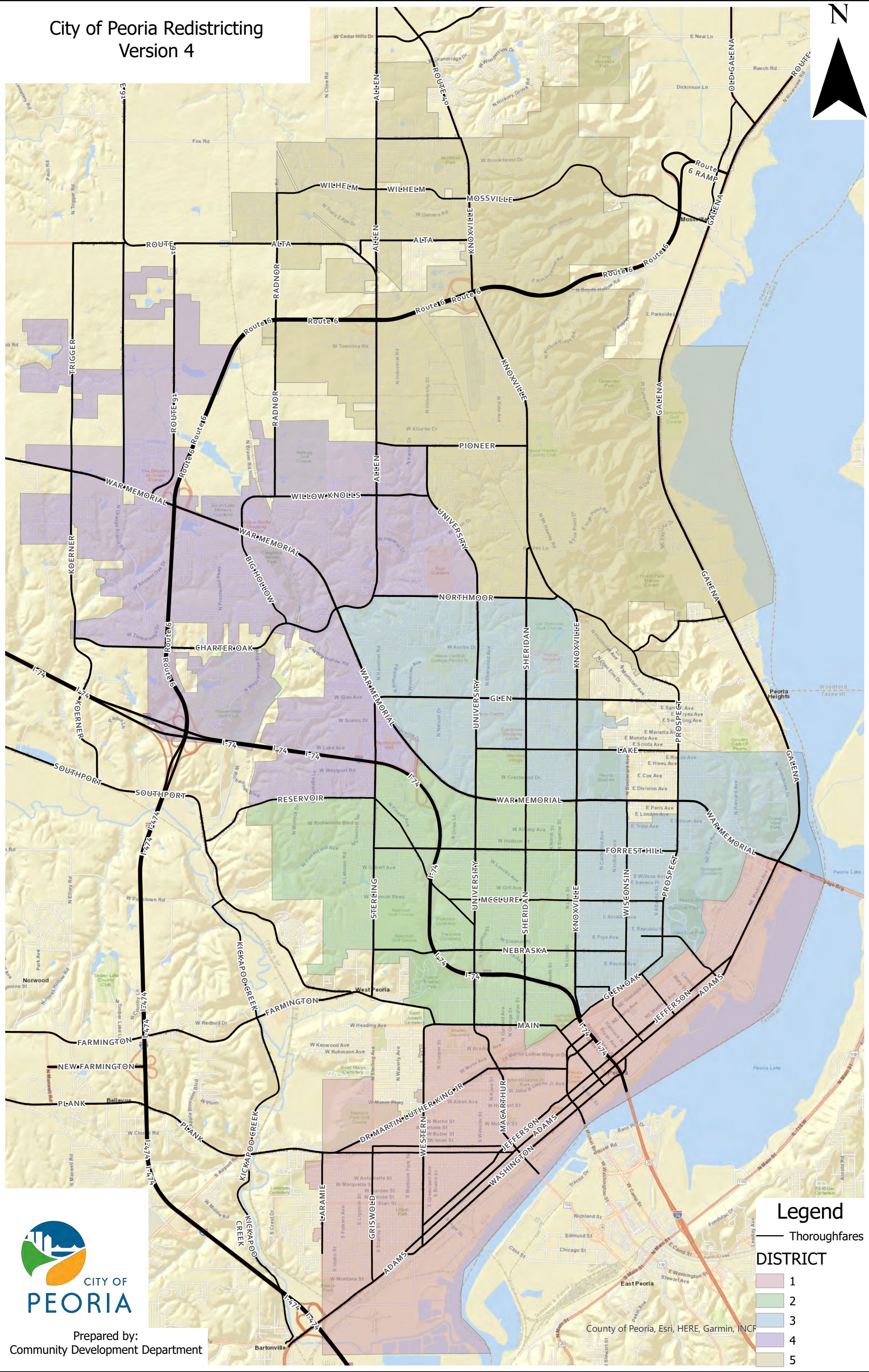


City of Peoria Redistricting Version 4



Prepared by:
Community Development Department

Legend

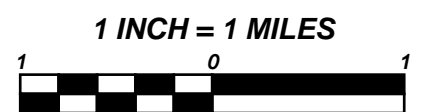
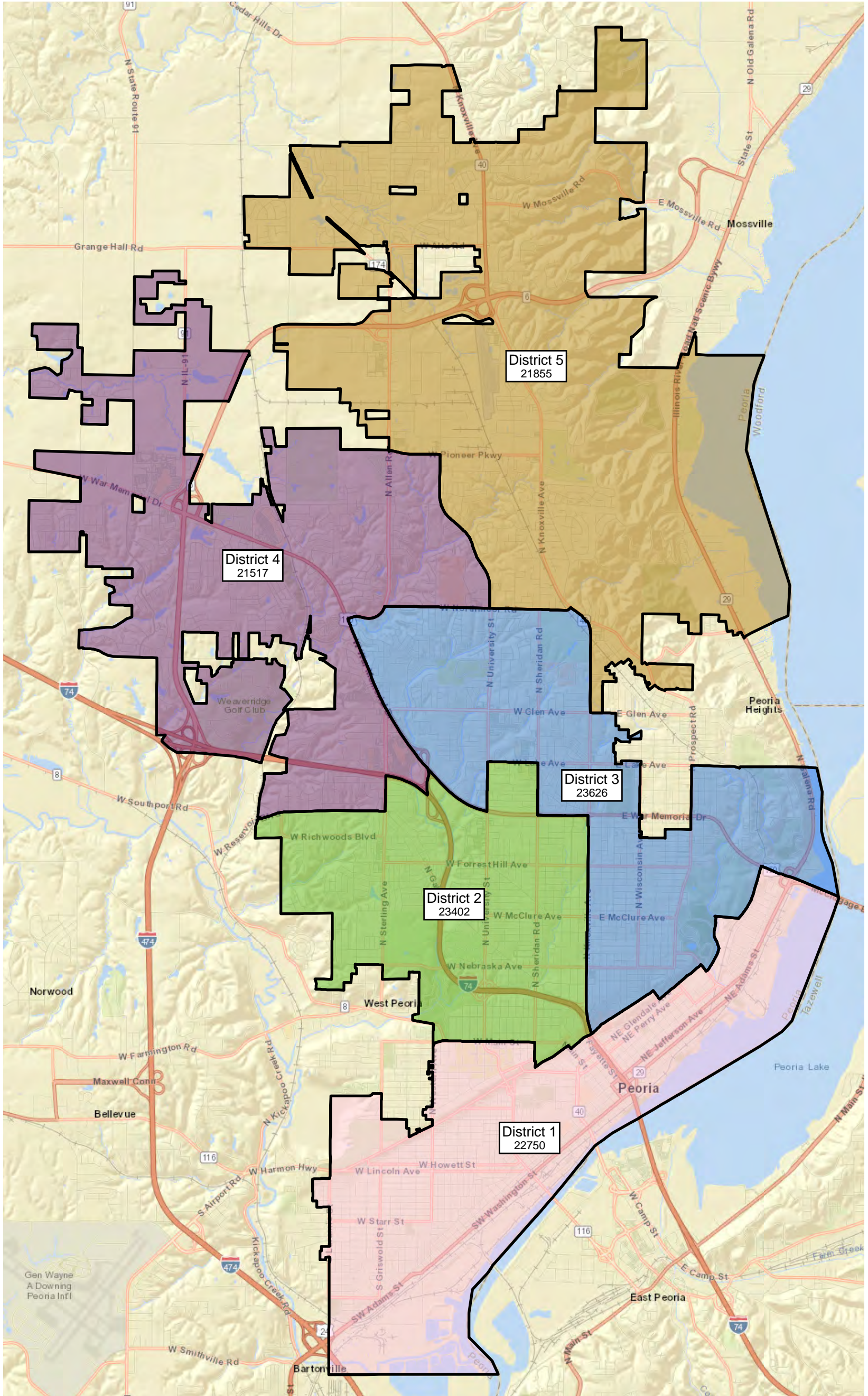
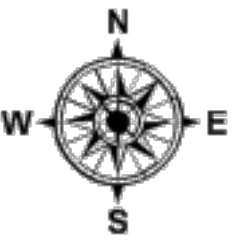
— Thoroughfares

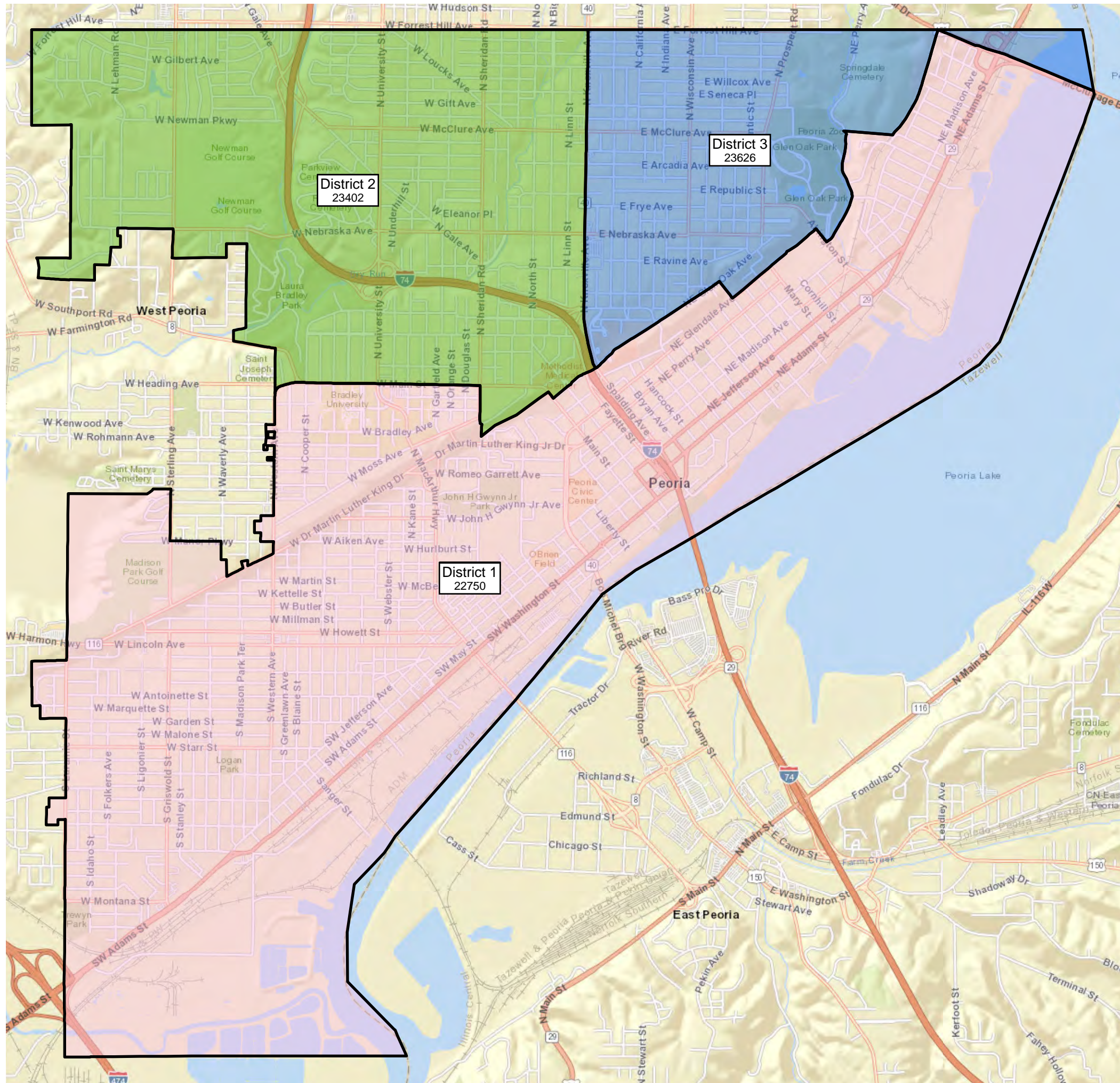
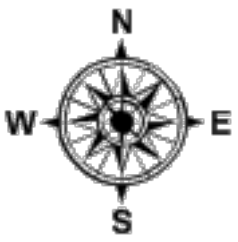
DISTRICT

- 1
- 2
- 3
- 4
- 5

County of Peoria, Esri, HERE, Garmin, INCF

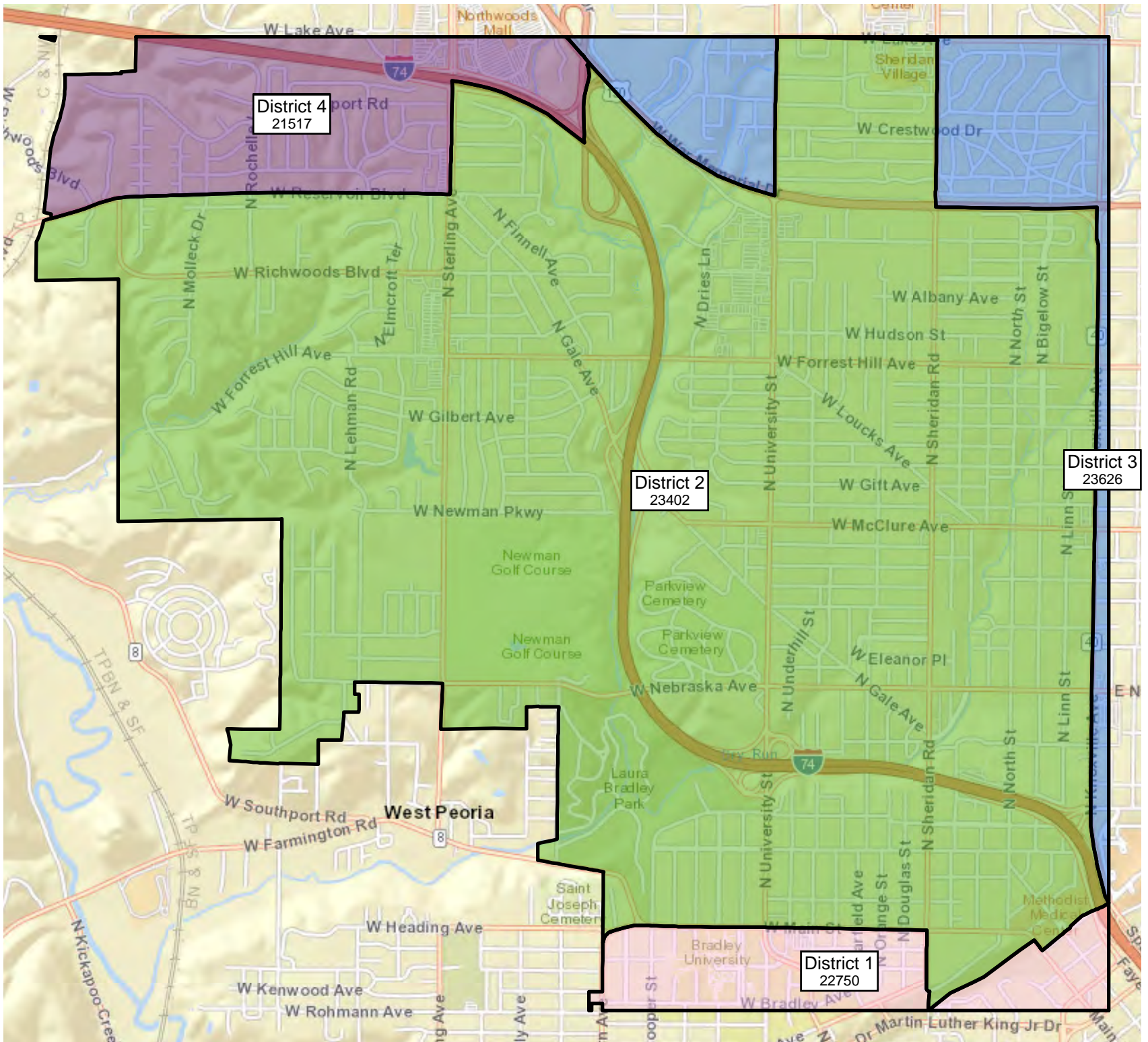
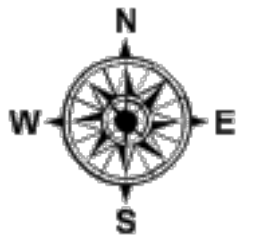
City of Peoria
Redistricting 2020
Version 4

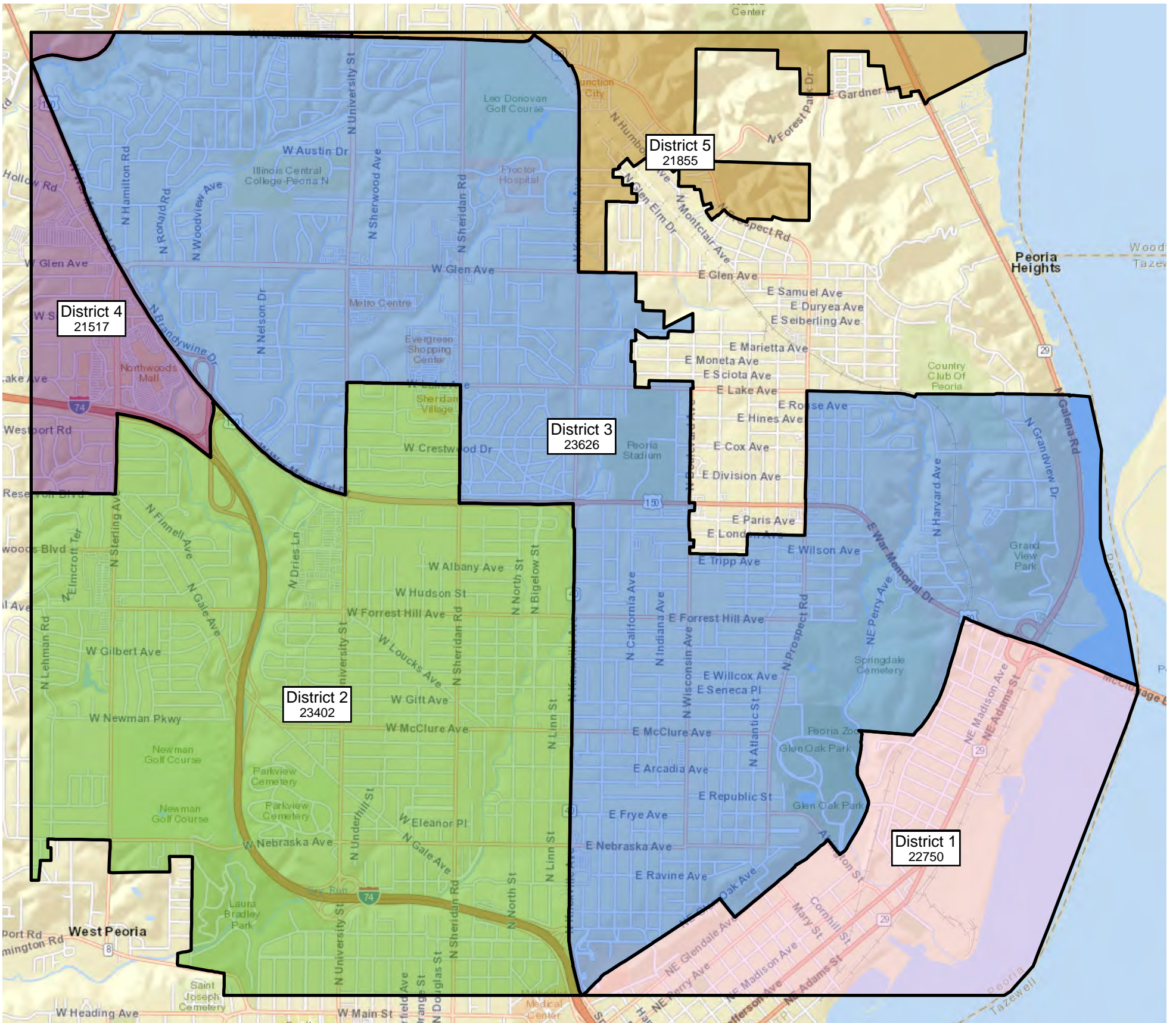
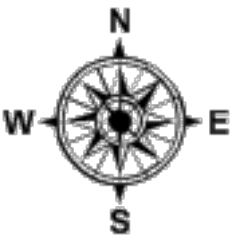




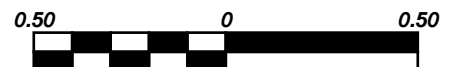
1 INCH = 0.5 MILES

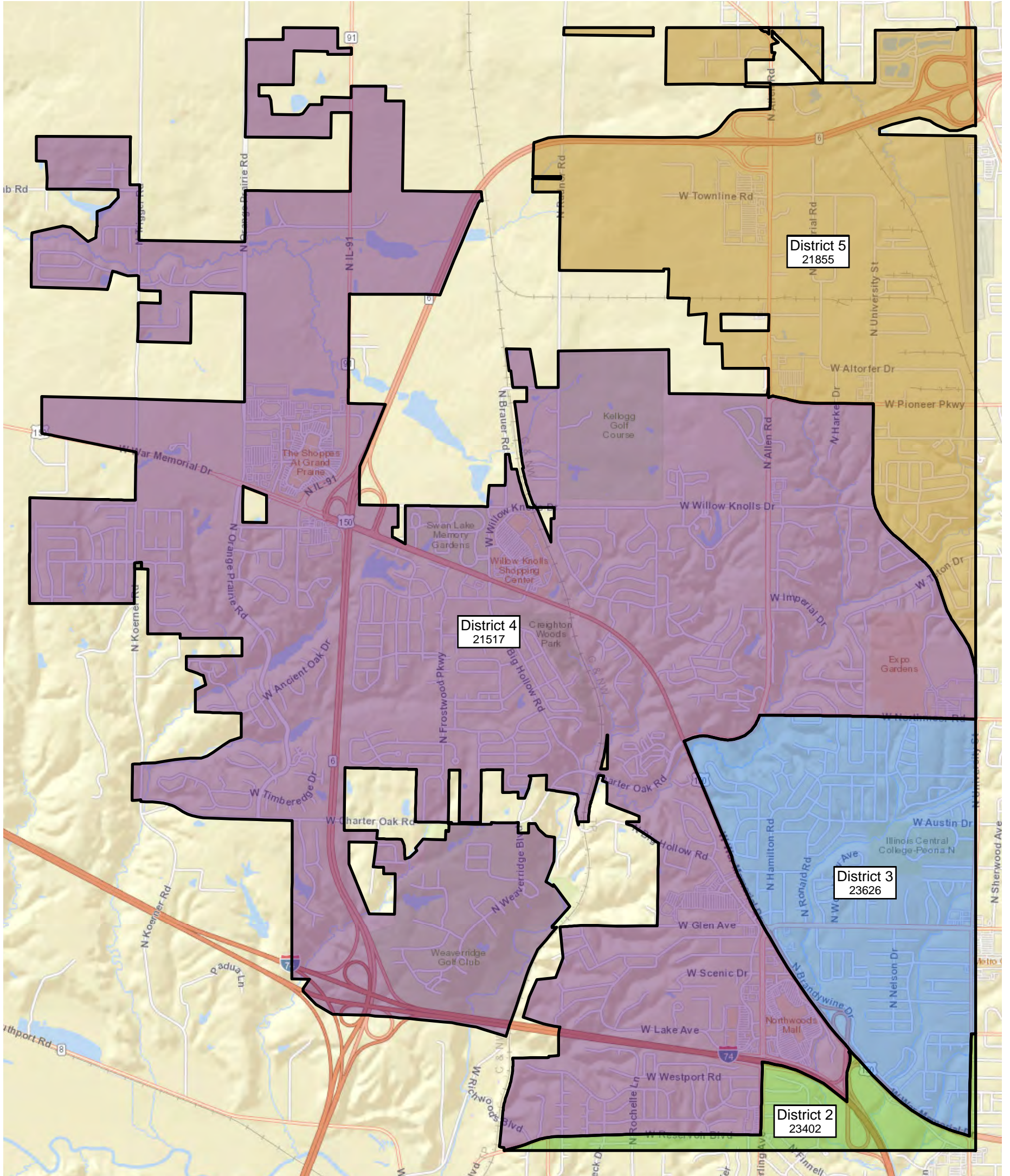
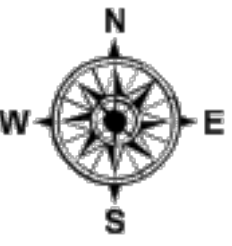


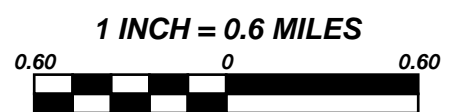
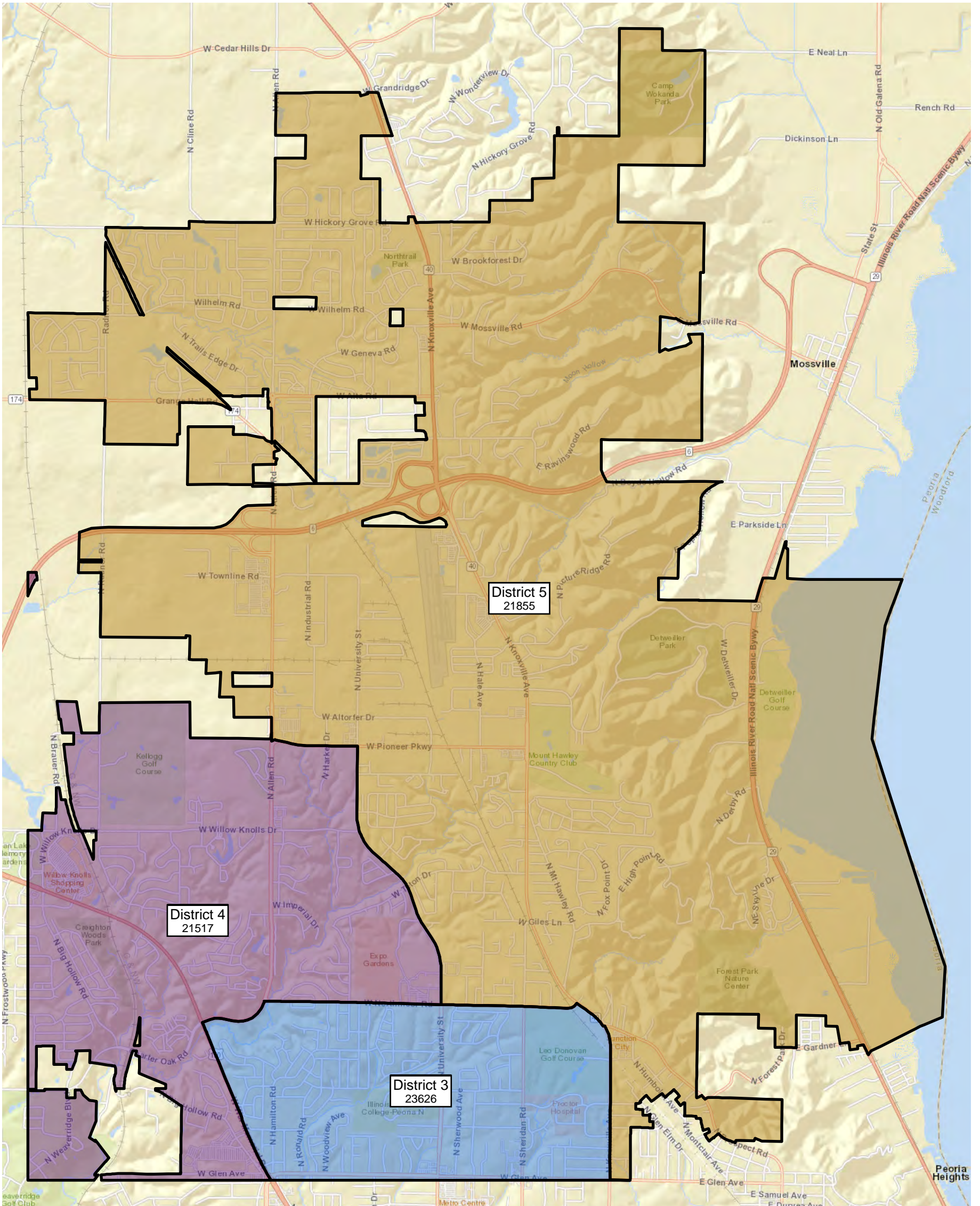
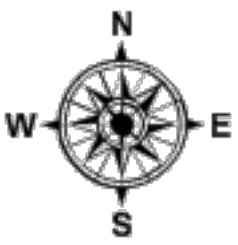




1 INCH = 0.5 MILES







All Districts Summary Report

District No.	D1
Total Population	22,750
Total Population 18+	17,158
Deviation	120
Dev. %	0.53

	Total Hispanic	Total Non-Hispanic	Total	Hispanic	Non-Hispanic	Non-Hispanic white	Non-Hispanic black	Non-Hispanic American Indian/Alaskan Native	Non-Hispanic Asian	Non-Hispanic Hawaiian or Other Pacific Islander
Total	2,564	20,186	22,750	2,564	20,186	7,744	11,417	235	385	19
Total%	11.27	88.73	100.00	11.27	88.73	34.04	50.18	1.03	1.69	0.08
Total18+	1,796	15,362	22,750	1,796	15,362	6,969	7,593	207	326	13
Total18+ ^c	10.47	89.53	132.59	10.47	89.53	40.62	44.25	1.21	1.90	0.08

	Total Hispanic	Total Non-Hispanic	Non-Hispanic some other race	Non-Hispanic two or more minority race
Total	2,564	20,186	220	166
Total%	11.27	88.73	0.97	0.73
Total18+	1,796	15,362	146	108
Total18+ ^c	10.47	89.53	0.85	0.63

District No.	D2
Total Population	23,402
Total Population 18+	17,803
Deviation	772
Dev. %	3.411

	Total Hispanic	Total Non-Hispanic	Total	Hispanic	Non-Hispanic	Non-Hispanic white	Non-Hispanic black	Non-Hispanic American Indian/Alaskan Native	Non-Hispanic Asian	Non-Hispanic Hawaiian or Other Pacific Islander
Total	1,546	21,856	23,402	1,546	21,856	11,165	9,498	277	461	15
Total%	6.61	93.39	100.00	6.61	93.39	47.71	40.59	1.18	1.97	0.06
Total18+	997	16,806	23,402	997	16,806	9,684	6,225	223	383	12
Total18+%	5.60	94.40	131.45	5.60	94.40	54.40	34.97	1.25	2.15	0.07

	Total Hispanic	Total Non-Hispanic	Non-Hispanic some other race	Non-Hispanic two or more minority race
Total	1,546	21,856	235	205
Total%	6.61	93.39	1.00	0.88
Total18+	997	16,806	160	119
Total18+%	5.60	94.40	0.90	0.67

District No. D3

Total Population 23,626

Total Population 18+ 17,905

Deviation 996

Dev. % 4.401

	Total Hispanic	Total Non-Hispanic	Total	Hispanic	Non-Hispanic	Non-Hispanic white	Non-Hispanic black	Non-Hispanic American Indian/Alaskan Native	Non-Hispanic Asian	Non-Hispanic Hawaiian or Other Pacific Islander
Total	2,045	21,581	23,626	2,045	21,581	12,935	7,295	230	688	14
Total%	8.66	91.34	100.00	8.66	91.34	54.75	30.88	0.97	2.91	0.06
Total18+	1,261	16,644	23,626	1,261	16,644	10,972	4,633	190	551	13
Total18+ ^c	7.04	92.96	131.95	7.04	92.96	61.28	25.88	1.06	3.08	0.07

	Total Hispanic	Total Non-Hispanic	Non-Hispanic some other race	Non-Hispanic two or more minority race
Total	2,045	21,581	229	190
Total%	8.66	91.34	0.97	0.80
Total18+	1,261	16,644	175	110
Total18+ ^c	7.04	92.96	0.98	0.61

District No. D4

Total Population 21,517

Total Population 18+ 16,927

Deviation -1,113

Dev. % -4.918

	Total Hispanic	Total Non-Hispanic	Total	Hispanic	Non-Hispanic	Non-Hispanic white	Non-Hispanic black	Non-Hispanic American Indian/Alaskan Native	Non-Hispanic Asian	Non-Hispanic Hawaiian or Other Pacific Islander
Total	957	20,560	21,517	957	20,560	13,711	4,067	221	2,220	13
Total%	4.45	95.55	100.00	4.45	95.55	63.72	18.90	1.03	10.32	0.06
Total18+	613	16,314	16,927	613	16,314	11,437	2,808	170	1,669	9
Total18+%	3.62	96.38	127.12	3.62	96.38	67.57	16.59	1.00	9.86	0.05

	Total Hispanic	Total Non-Hispanic	Non-Hispanic some other race	Non-Hispanic two or more minority race
Total	957	20,560	231	97
Total%	4.45	95.55	1.07	0.45
Total18+	613	16,314	165	56
Total18+%	3.62	96.38	0.97	0.33

District No. D5

Total Population 21,855

Total Population 18+ 16,165

Deviation -775

Dev. % -3.425

	Total Hispanic	Total Non-Hispanic	Total	Hispanic	Non-Hispanic	Non-Hispanic white	Non-Hispanic black	Non-Hispanic American Indian/Alaskan Native	Non-Hispanic Asian	Non-Hispanic Hawaiian or Other Pacific Islander
Total	787	21,068	21,855	787	21,068	14,809	1,686	188	4,053	16
Total%	3.60	96.40	100.00	3.60	96.40	67.76	7.71	0.86	18.54	0.07
Total18+	486	15,679	21,855	486	15,679	11,575	1,108	137	2,651	7
Total18+ ^c	3.01	96.99	135.20	3.01	96.99	71.61	6.85	0.85	16.40	0.04

	Total Hispanic	Total Non-Hispanic	Non-Hispanic some other race	Non-Hispanic two or more minority race
Total	787	21,068	243	73
Total%	3.60	96.40	1.11	0.33
Total18+	486	15,679	164	37
Total18+ ^c	3.01	96.99	1.01	0.23