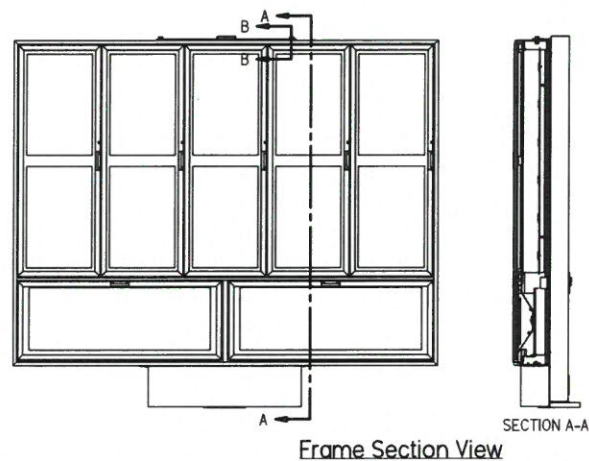
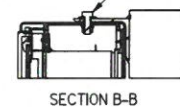
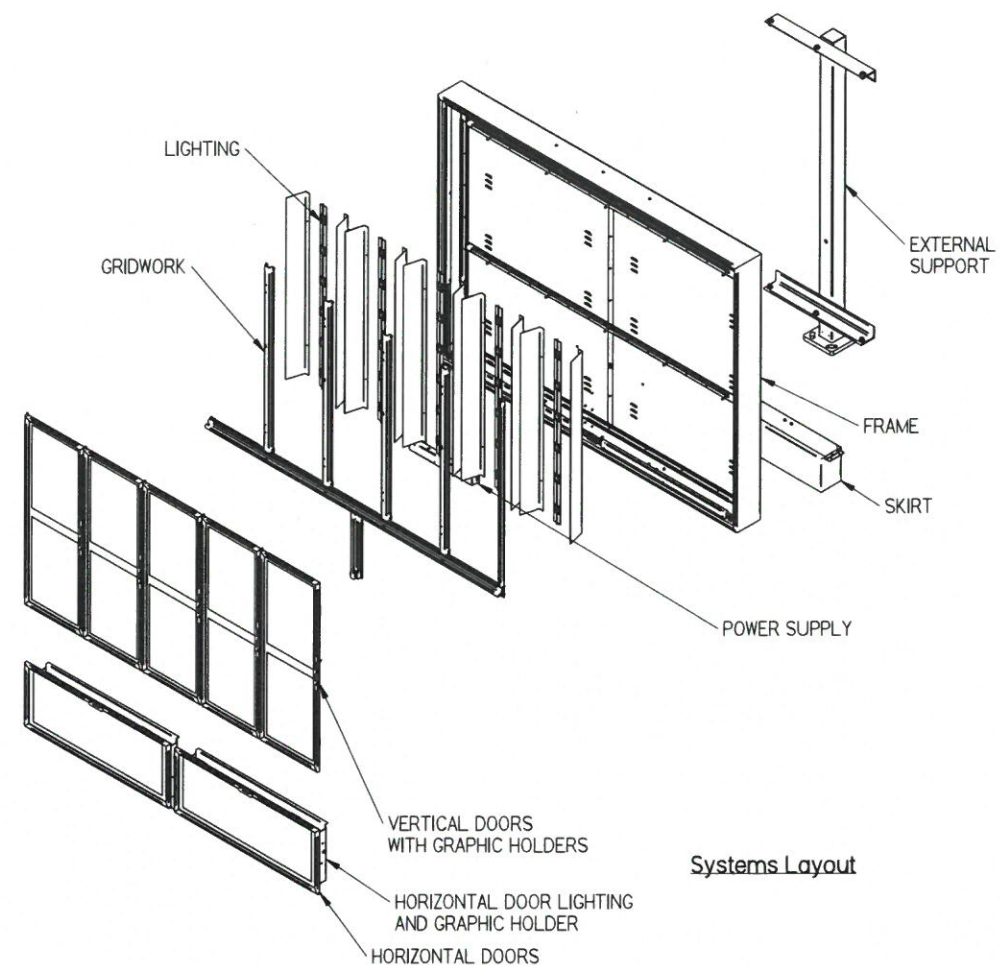


Overall Dimensions

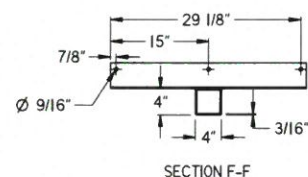
MENU BOARD CABINET FASTENED TO MOUNTING POLE WELDMENT WITH (6) 1/2-13 X 1-1/4 GR7ADE A325 BOLTS, WASHERS AND NUTS. (3) THROUGH TOP OF CABINET AND (3) THROUGH BOTTOM OF CABINET.



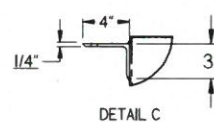
Frame Section View



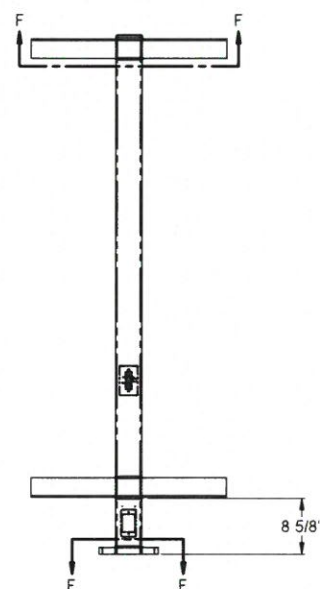
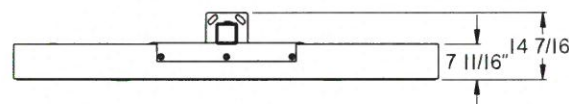
Systems Layout



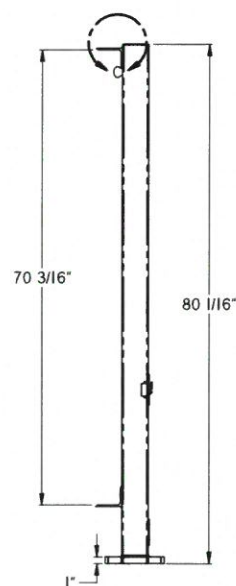
SECTION F-F



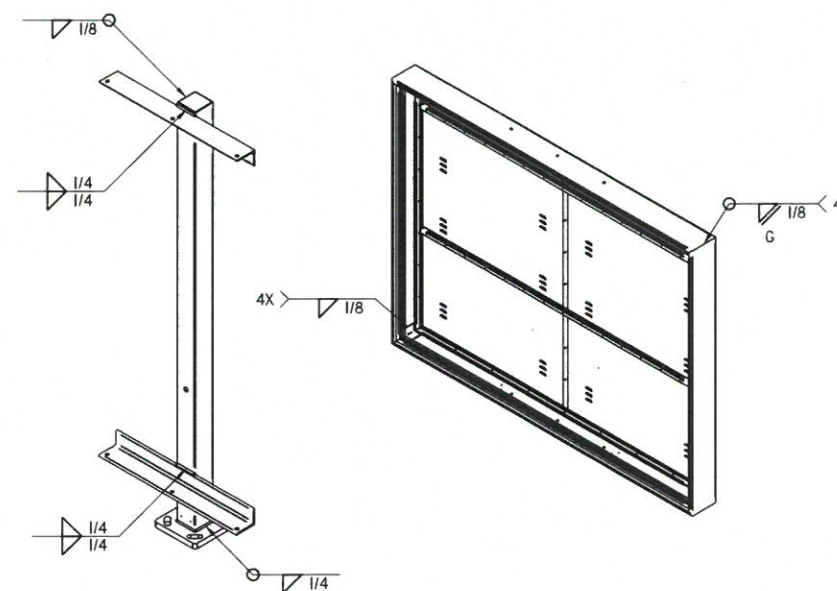
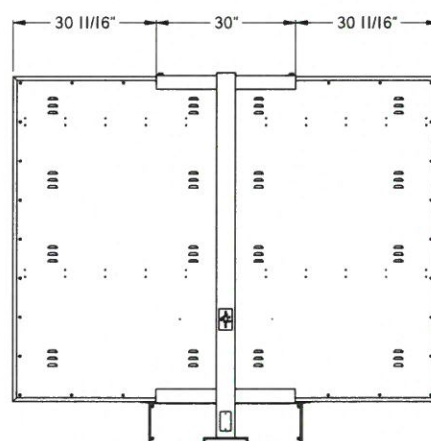
DETAIL C



SECTION E-E



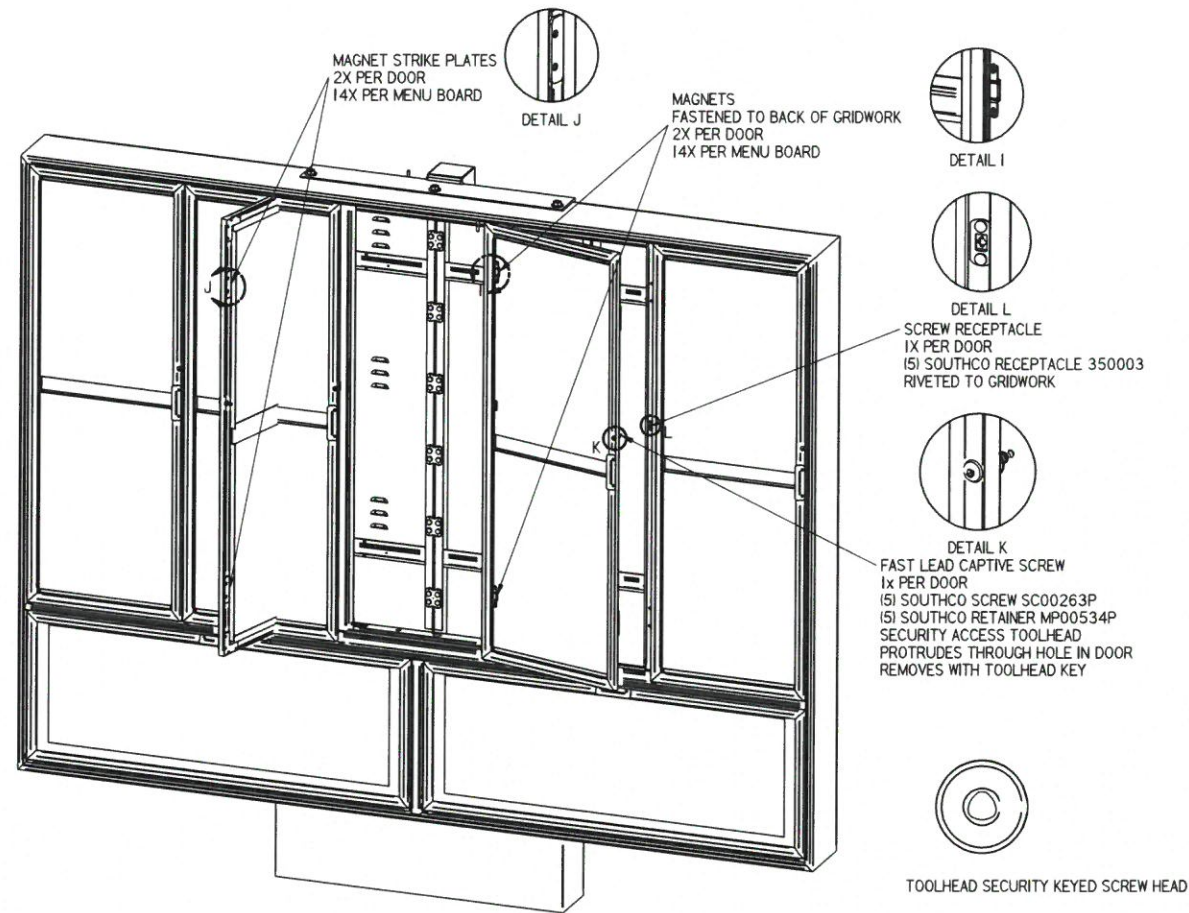
Exterior Support System



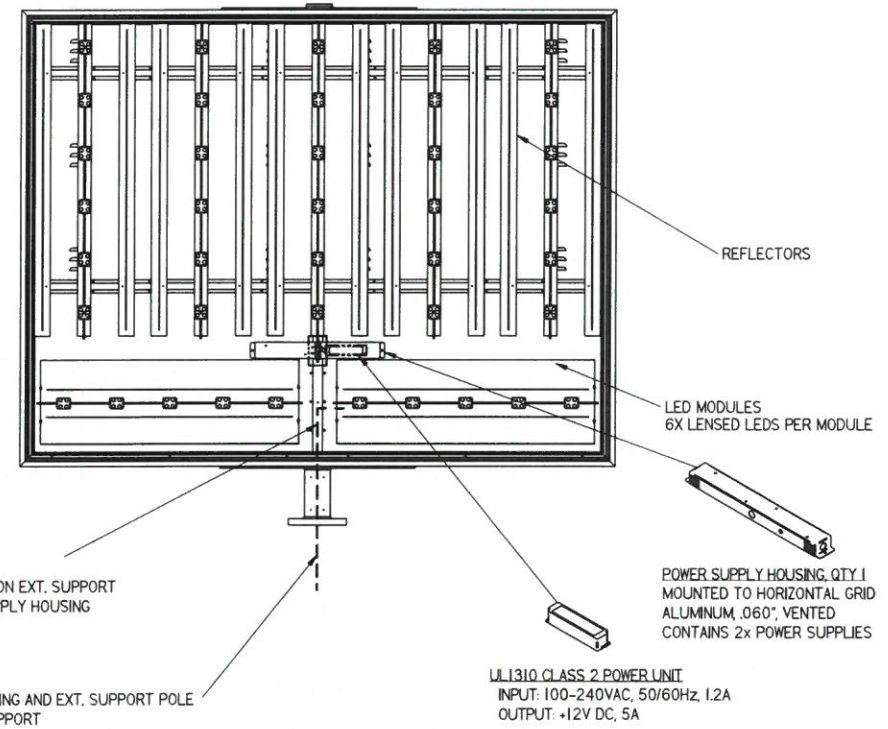
Frame and Exterior Support Weldments

- GENERAL SPECIFICATIONS**
- MATERIALS - Aluminum Sheetmetal 3003-H14
 - Aluminum Extrusion 6063-T6
 - Steel Tube ASTM A500B
 - Steel Sheet ASTM A591
 - Steel Shapes ASTM A36
 - Menuboard Area - 46.8 Sq. Ft.
 - Weight (Est) - 730 lbs (Crated)
 - 449 lbs (Uncrated)
- ELECTRICAL:**
- Power Supply - III Class 2 Power Supply
 - Load Requirement - 1 AMP @ 120VAC-60Hz
- COLORS**
- Cabinet - Taco Bell Bronze Powdercoat
 - Doors and Gridwork - Satin Black Powdercoat
 - External Support Structure - Taco Bell Bronze Powdercoat
- LIGHTING**
- Color - 4100K White LED's
 - Illuminance - 740 Lux
 - Distribution - Max 15% Deviation from Mean

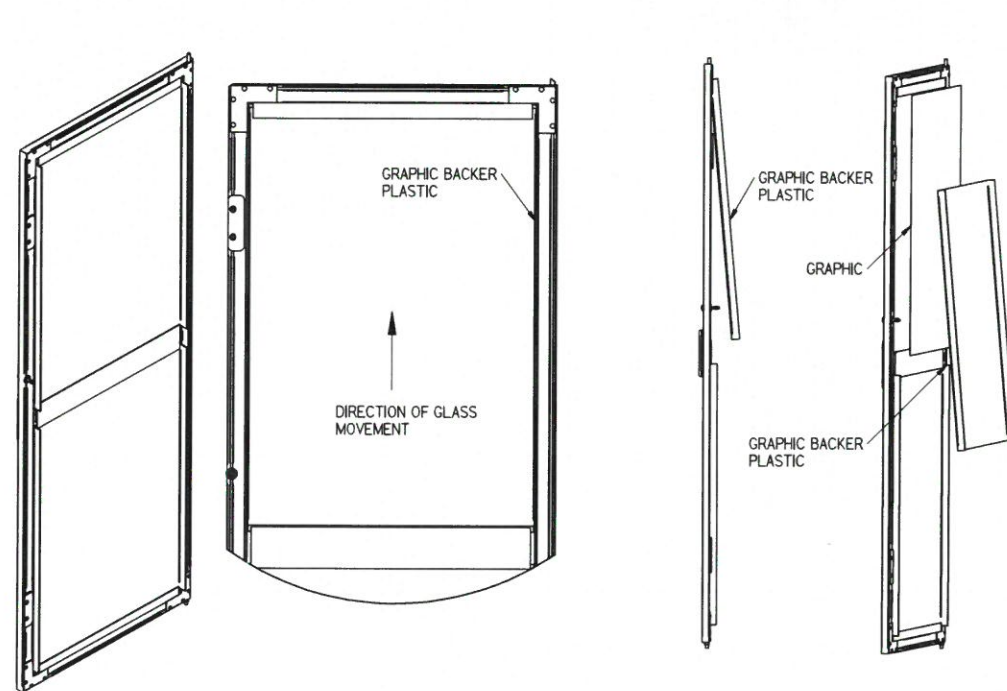
OM	INITIAL	DATE	PROJECT
DRAWN	AL	08/12/17	TB EVO LED VE
CHECKED			
ENG APPR			
MGR APPR			
Tolerances: Units Are in Inches Unless Otherwise Specified:			DESCRIPTION
Welding	+0.18"	SIZE	5 PANEL MENUBOARD,
Assembly	+0.08"	DWG NO	VALUE ENGINEERED
Sheet Metal	+0.015"	D	SYSTEM VIEW
Bending	+0.015"	SCALE:	WEIGHT:
Sheet Fabric	+0.005"		SHEET 1 OF 2



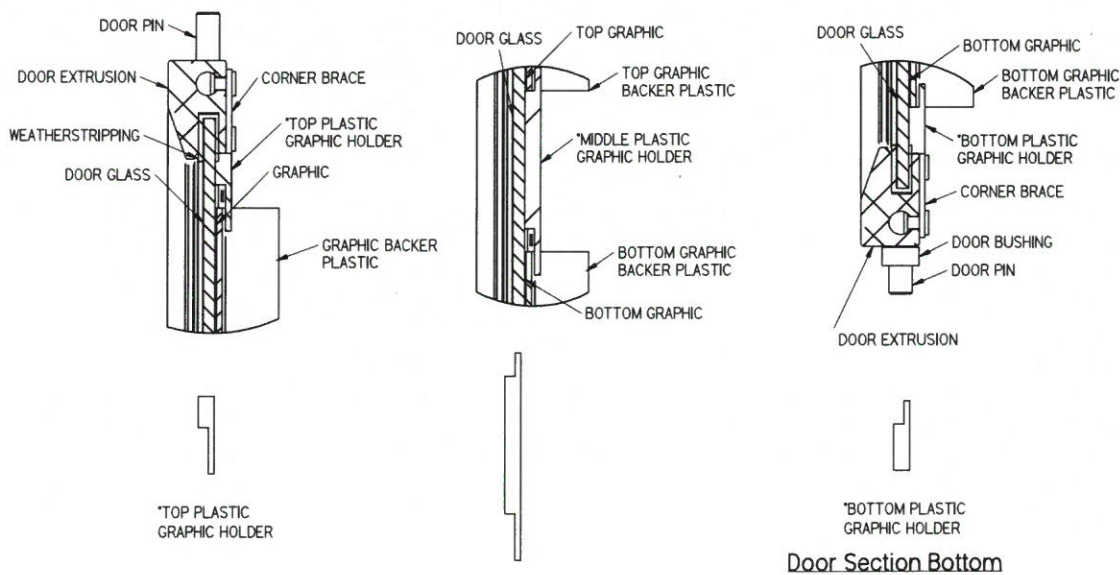
Door Locking and Magnetic Details



Electrical System



Vertical Door Graphic Holder Operation



Door Section Top

Door Section Middle

Door Section Bottom

GRAPHIC HOLDERS
- ACTIVE HOLDER SLIDES BETWEEN DOOR AND LIGHT ASSEMBLY
- SECONDARY GRAPHIC SLIDES BEHIND LIGHT ASSEMBLY
- SEE DETAIL VIEW FOR GRAPHIC LOADING PROCEDURE BELOW

HORIZONTAL DOORS
- DOORS HINGE FROM THE BASE TO ALLOW ACCESS TO GRAPHIC SLOTS
- DOORS OPEN UNTIL SIDE MOUNTED STOP BRACKET IS ENGAGED

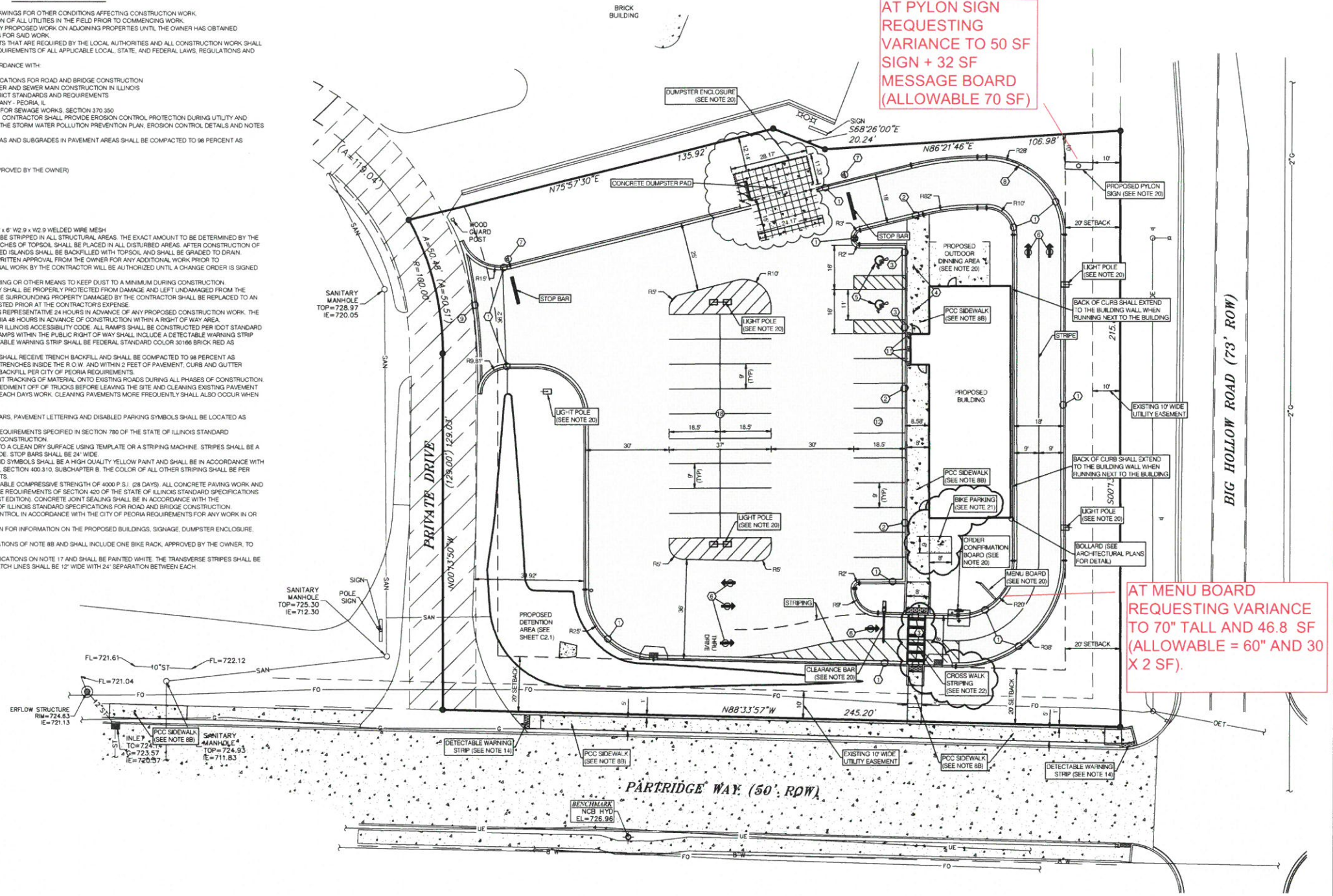
Operation of Horizontal Doors and Graphic Holders

Vertical Door and Graphic Holder System

 340 South Estrad Street Oklahoma City, OK 73129 Phone: 844-234-6837 Fax: 405-672-5349 www.ordermatic.com <small>All information contained in this document is property of Ordermatic and may not be reproduced in whole or part without permission of Ordermatic.</small>	INITIAL	DATE	PROJECT	
	DRAWN	AL	08/12/17	TB EVO LED VE
	CHECKED			DESCRIPTION
	ENG APPR			5 PANEL MENUBOARD, VALUE ENGINEERED
MGR APPR				
Tolerances: Units Are In Inches Unless Otherwise Specified				
Welding		-.18"	SIZE DWG NO	
Assembly		-.18"	D SYSTEM VIEW	
Sheet Metal		-.015"	REV 2	
Bending		-.015"	SCALE: WEIGHT: SHEET 2 OF 2	
Spigot/Plug		-.010"		

GENERAL NOTES

- SEE CONSTRUCTION NOTES ON OTHER 'C' DRAWINGS FOR OTHER CONDITIONS AFFECTING CONSTRUCTION WORK.
- THE CONTRACTOR SHALL VERIFY THE LOCATION OF ALL UTILITIES IN THE FIELD PRIOR TO COMMENCING WORK.
- THE CONTRACTOR SHALL NOT COMMENCE ANY PROPOSED WORK ON ADJOINING PROPERTIES UNTIL THE OWNER HAS OBTAINED CONSTRUCTION EASEMENTS OR AGREEMENTS FOR SAID WORK.
- THE CONTRACTOR SHALL ACQUIRE ALL PERMITS THAT ARE REQUIRED BY THE LOCAL AUTHORITIES AND ALL CONSTRUCTION WORK SHALL BE PERFORMED IN COMPLIANCE WITH THE REQUIREMENTS OF ALL APPLICABLE LOCAL, STATE, AND FEDERAL LAWS, REGULATIONS AND RULES.
- ALL CONSTRUCTION WORK SHALL BE IN ACCORDANCE WITH:
 - CITY OF PEORIA REQUIREMENTS
 - STATE OF ILLINOIS STANDARD SPECIFICATIONS FOR ROAD AND BRIDGE CONSTRUCTION
 - STANDARD SPECIFICATIONS FOR WATER AND SEWER MAIN CONSTRUCTION IN ILLINOIS
 - THE GREATER PEORIA SANITARY DISTRICT STANDARDS AND REQUIREMENTS
 - THE ILLINOIS AMERICAN WATER COMPANY - PEORIA, IL
 - ILLINOIS RECOMMENDED STANDARDS FOR SEWAGE WORKS, SECTION 370.350
- STORM WATER POLLUTION PREVENTION PLAN - CONTRACTOR SHALL PROVIDE EROSION CONTROL PROTECTION DURING UTILITY AND CONSTRUCTION WORK IN ACCORDANCE WITH THE STORM WATER POLLUTION PREVENTION PLAN, EROSION CONTROL DETAILS AND NOTES SHOWN ON SHEETS C5.1 AND C5.2.
- EXCAVATION PLACED IN STRUCTURAL FILL AREAS AND SUBGRADES IN PAVEMENT AREAS SHALL BE COMPACTED TO 98 PERCENT AS DETERMINED BY STANDARD PROCTOR.
- PAVEMENT DESIGN:
 - PAVER PAVEMENT SECTION:
 - 3-1/8" PERMEABLE PAVERS (TO BE APPROVED BY THE OWNER)
 - 2" CA-16 SETTING BED
 - CA-7 BASE AGGREGATE
 - 12" CA-1 SUBBASE AGGREGATE
 - CONCRETE SIDEWALK:
 - TRUCK SIDEWALK:
 - 2" CA-6 TYPE B BASE COURSE
 - CONCRETE DUMPSTER PAD:
 - TRUCK PAVEMENT INCLUDING 6" x 6" W2.9 x W2.9 WELDED WIRE MESH
- APPROXIMATELY 8 INCHES OF TOP SOIL SHALL BE STRIPPED IN ALL STRUCTURAL AREAS. THE EXACT AMOUNT TO BE DETERMINED BY THE OWNER'S REPRESENTATIVE. A MINIMUM OF 6 INCHES OF TOPSOIL SHALL BE PLACED IN ALL DISTURBED AREAS. AFTER CONSTRUCTION OF CURB AND GUTTER, BEHIND CURBS AND CURBED ISLANDS SHALL BE BACKFILLED WITH TOPSOIL AND SHALL BE GRADED TO DRAIN. CONTRACTOR SHALL REQUEST AND RECEIVE WRITTEN APPROVAL FROM THE OWNER FOR ANY ADDITIONAL WORK PRIOR TO COMMENCEMENT OF SAID WORK. NO ADDITIONAL WORK BY THE CONTRACTOR WILL BE AUTHORIZED UNTIL A CHANGE ORDER IS SIGNED BY THE OWNER.
- DUST CONTROL SHALL BE PROVIDED BY WATERING OR OTHER MEANS TO KEEP DUST TO A MINIMUM DURING CONSTRUCTION.
- ALL EXISTING ADJACENT AREAS AND PROPERTY SHALL BE PROPERLY PROTECTED FROM DAMAGE AND LEFT UNDAMAGED FROM THE OPERATIONS OF THE CONTRACTOR. ANY OF THE SURROUNDING PROPERTY DAMAGED BY THE CONTRACTOR SHALL BE REPLACED TO AN EQUAL OR BETTER CONDITION THAN WHAT EXISTED PRIOR TO THE CONTRACTOR'S EXPENSE.
- THE CONTRACTOR SHALL NOTIFY THE OWNER'S REPRESENTATIVE 24 HOURS IN ADVANCE OF ANY PROPOSED CONSTRUCTION WORK. THE CONTRACTOR SHALL NOTIFY THE CITY OF PEORIA 48 HOURS IN ADVANCE OF CONSTRUCTION WITHIN A RIGHT OF WAY AREA.
- ALL I.C.C. RAMPS SHALL BE CONSTRUCTED PER ILLINOIS ACCESSIBILITY CODE. ALL RAMPS SHALL BE CONSTRUCTED PER FOOT STANDARD # 42401-06 (CURB RAMPS FOR SIDEWALKS). RAMPS WITHIN THE PUBLIC RIGHT OF WAY SHALL INCLUDE A DETECTABLE WARNING STRIP WITH RAISED TRUNCATED DOMES. THE DETECTABLE WARNING STRIP SHALL BE FEDERAL STANDARD COLOR 30166 BRICK RED AS REQUIRED.
- ALL UTILITY TRENCHES IN STRUCTURAL AREAS SHALL RECEIVE TRENCH BACKFILL AND SHALL BE COMPACTED TO 98 PERCENT AS DETERMINED BY STANDARD PROCTOR. UTILITY TRENCHES INSIDE THE R.O.W. AND WITHIN 2 FEET OF PAVEMENT, CURBS AND GUTTER AND/OR SIDEWALK SHALL RECEIVE FLOWABLE BACKFILL PER CITY OF PEORIA REQUIREMENTS.
- ALL PRECAUTIONS SHALL BE TAKEN TO PREVENT TRACKING OF MATERIAL ONTO EXISTING ROADS DURING ALL PHASES OF CONSTRUCTION. THIS SHALL INCLUDE CLEANING OF MUD AND SEDIMENT OFF OF TRUCKS BEFORE LEAVING THE SITE AND CLEANING EXISTING PAVEMENT OF ALL DIRT, MUD AND DEBRIS AT THE END OF EACH DAY'S WORK. CLEANING PAVEMENTS MORE FREQUENTLY SHALL ALSO OCCUR WHEN NECESSARY.
- PAVEMENT MARKINGS:
 - PARKING SPACE LINES, ARROWS, STOP BARS, PAVEMENT LETTERING AND DISABLED PARKING SYMBOLS SHALL BE LOCATED AS SHOWN IN THESE PLANS.
 - PAVEMENT MARKINGS SHALL MEET THE REQUIREMENTS SPECIFIED IN SECTION 780 OF THE STATE OF ILLINOIS STANDARD SPECIFICATIONS FOR ROAD AND BRIDGE CONSTRUCTION.
 - PAINT SHALL BE APPLIED IN TWO COATS TO A CLEAN DRY SURFACE USING TEMPLATE OR A STRIPING MACHINE. STRIPES SHALL BE A UNIFORM WIDTH OF FOUR INCHES (4") WIDE. STOP BARS SHALL BE 24" WIDE.
 - DISABLED PARKING SPACES, STRIPING AND SYMBOLS SHALL BE A HIGH QUALITY YELLOW PAINT AND SHALL BE IN ACCORDANCE WITH ILLINOIS ACCESSIBILITY CODE, CHAPTER 1, SECTION 400.3.10, SUBCHAPTER B. THE COLOR OF ALL OTHER STRIPING SHALL BE PER OWNER'S REPRESENTATIVE REQUIREMENTS.
- ALL CONCRETE SHALL HAVE A MINIMUM ALLOWABLE COMPRESSIVE STRENGTH OF 4000 P.S.I. (28 DAYS). ALL CONCRETE PAVING WORK AND MATERIALS SHALL BE IN ACCORDANCE WITH THE REQUIREMENTS OF SECTION 400 OF THE STATE OF ILLINOIS STANDARD SPECIFICATIONS FOR ROAD AND BRIDGE CONSTRUCTION (LATEST EDITION). CONCRETE JOINT SEALING SHALL BE IN ACCORDANCE WITH THE REQUIREMENTS OF SEC. 400.12 OF THE STATE OF ILLINOIS STANDARD SPECIFICATIONS FOR ROAD AND BRIDGE CONSTRUCTION.
- THE CONTRACTOR SHALL PROVIDE TRAFFIC CONTROL IN ACCORDANCE WITH THE CITY OF PEORIA REQUIREMENTS FOR ANY WORK IN OR ALONG RIGHT OF WAY AREAS.
- SEE ARCHITECTURAL PLANS AND LIGHTING PLAN FOR INFORMATION ON THE PROPOSED BUILDINGS, SIGNAGE, DUMPSTER ENCLOSURE, OUTDOOR DINING AREA AND SITE LIGHTING.
- BICYCLE PARKING AREA SHALL MEET SPECIFICATIONS OF NOTE 8B AND SHALL INCLUDE ONE BIKE RACK, APPROVED BY THE OWNER, TO PROVIDE PARKING FOR TWO BICYCLES.
- CROSSWALK STRIPING SHALL MEET THE SPECIFICATIONS ON NOTE 17 AND SHALL BE PAINTED WHITE. THE TRANSVERSE STRIPES SHALL BE 6" WIDE AND SHALL BE 6' APART. THE GROSS HATCH LINES SHALL BE 12" WIDE WITH 24" SEPARATION BETWEEN EACH.



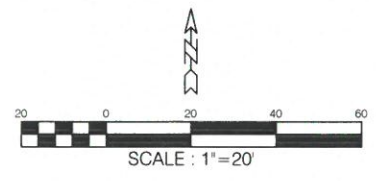
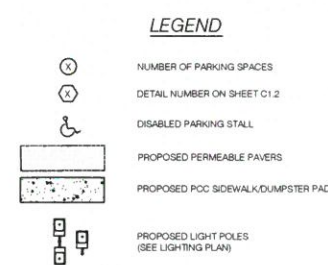
AT PYLON SIGN REQUESTING VARIANCE TO 50 SF SIGN + 32 SF MESSAGE BOARD (ALLOWABLE 70 SF)

AT MENU BOARD REQUESTING VARIANCE TO 70" TALL AND 46.8 SF (ALLOWABLE = 60" AND 30 X 2 SF).

Rationale:
 Menu Board: Single menu board in lieu of two provides less total square footage of menu board.
 Pole Sign: The smallest pole sign option available from corporate is being used.

PARKING DATA

TOTAL PROPOSED BUILDING SQUARE FOOTAGE	2,532 SQ. FT.
PROPOSED DISABLED PARKING	2 SPACES
PROPOSED STANDARD PARKING	28 SPACES
PROPOSED TOTAL PARKING SPACES	30 SPACES
PROPOSED PARKING RATIO	11.8 SPACES / 1000 SQ. FT.



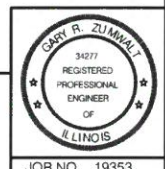
PROJECT MANAGER: TWA	REVISIONS:
APPROVED BY: GRZ	04/11/18 - REVISIONS PER CITY OF PEORIA REVIEW COMMENTS - CME
DATE: FEBRUARY 15, 2018	06/06/18 - REVISIONS TO DUMPSTER PAD PER ARCH. COMMENTS - TWA
DWG: 19353-C1.1 LAYOUT	12/07/18 - PARKING STALLS DELETED ON NORTH AND WEST SIDE PER OWNERS COMMENTS - TWA
SURVEY BY: M.J.F.	

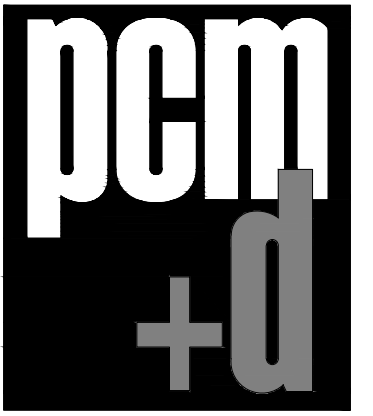
ZUMWALT & ASSOCIATES, INC.
 PROFESSIONAL ENGINEERS • REGISTERED LAND SURVEYORS
 1040 W. OLYMPIA DRIVE
 PEORIA, ILLINOIS • (309) 692-5074
 DESIGN FIRM REGISTRATION NO. 184-003189

TACO BELL - BIG HOLLOW ROAD
 PEORIA, ILLINOIS

SITE LAYOUT PLAN AND GENERAL NOTES

C1.1

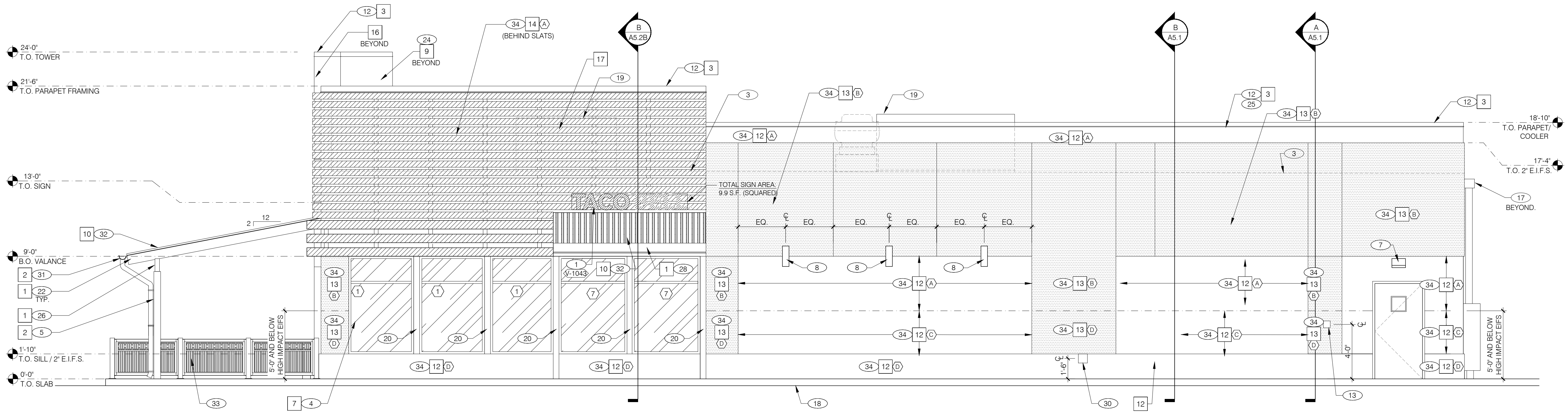




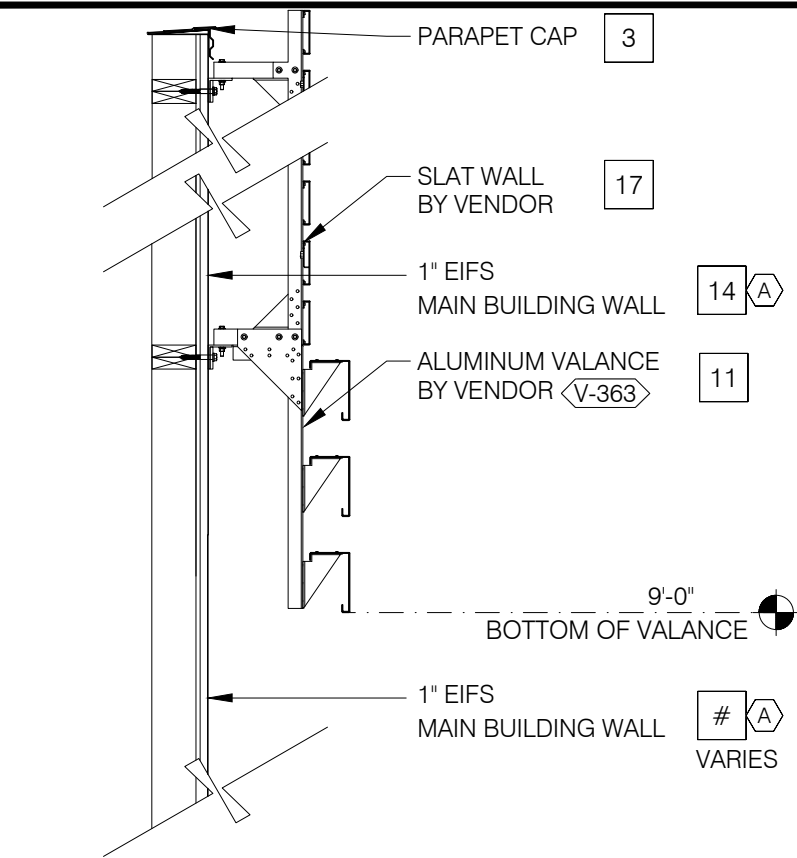
pem+d
905 W. Main Street, Suite 300
Peoria, IL 61606
Phone: 309 694 5912
Professional Design Firm
Registration #184.005700



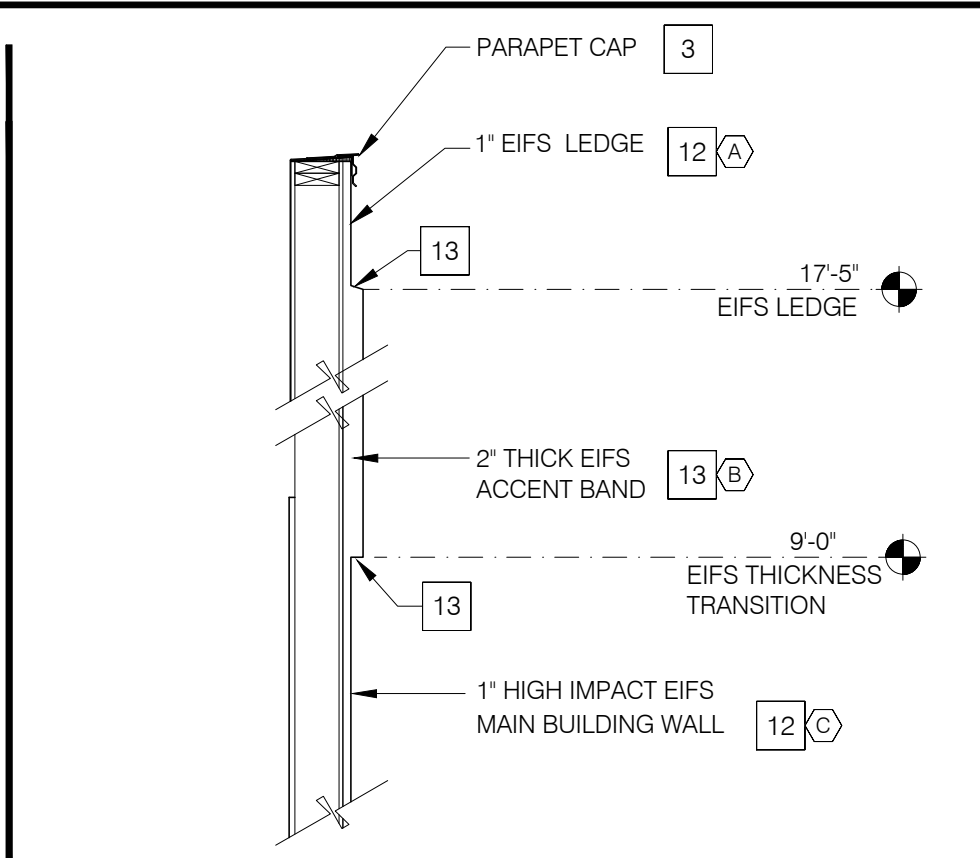
www.keithmep.com
707 NE Jefferson Ave Peoria, IL 61603
309 / 693-4025 : office
309 / 214-0063 : fax
PROFESSIONAL DESIGN FIRM
#184-03470



RIGHT SIDE ELEVATION 1/4"=1'-0" **A**



SLAT WALL COLOR TRANSITION N.T.S. **I**



EIFS THICKNESS COLOR TRANSITION N.T.S. **G**

MISCELLANEOUS
A. SEE SHT A1.1 "WINDOW TYPES" FOR WINDOW ELEVATIONS.

SEALERS (REFER TO SPECS):
A. SEALANT AT ALL WALL AND ROOF PENETRATIONS.
B. SEALANT AT ALL WINDOW AND DOOR FRAMES AT HEAD AND JAMB. DO NOT SEAL SILL @ WINDOWS.
C. APPLY NEOPRENE GASKET (CONT.) BETWEEN BUILDING & CANOPY.

"CRITICAL" DIMENSIONS:
A. REQUIRED CLEAR OPENING WIDTH TO ENSURE COORDINATION WITH STANDARD SIGNAGE/ BUILDING ELEMENTS DIMENSIONS.

NOTE: NO EXTERIOR SIGNS ARE WITHIN THE SCOPE OF WORK COVERED BY THE BUILDING PERMIT APPLICATION. THE GENERAL CONTRACTOR SHALL BE RESPONSIBLE FOR COORDINATING THE INSTALLATION OF ALL EXTERIOR SIGNS AND INSTALLATION OF REQUIRED BLOCKING AND ELECTRICAL CONNECTIONS FOR FINAL APPROVED SIGNS.

GENERAL NOTES **F**

PAINTING OVER EIFS/STUCCO:
APPLICATOR MUST DO THEIR DUE DILIGENCE WITH PREPARATION.
PRIMER: 1 COAT SW A214W8300, LOXON CONCRETE & MASONRY PRIMER.
FINISH: 2 COATS SW A82-100 SERIES, A-100 EXTERIOR LATEX SATIN.

EIFS NOTES **E**

- (A) BASE THICKNESS - 1" THICK E.I.F.S.
- (B) BASE THICKNESS - 2" THICK E.I.F.S.
- (C) BASE THICKNESS - 1" THICK E.I.F.S. WITH HIGH IMPACT MESH (ONLY WHERE NOTED). SEE DETAIL 2/A6.2.
- (D) BASE THICKNESS - 2" THICK E.I.F.S. WITH HIGH IMPACT MESH (ONLY WHERE NOTED). SEE DETAIL 2/A6.2.

E.I.F.S. THICKNESS N.T.S. **B**

NOTE: SIGNAGE UNDER SEPARATE PERMIT

QTY	ITEM DESCRIPTION	ELEC
2	TB 3'-6" x 4'-0" LOGO BELL - FACE LIT	X
3	TB 14" CHANNEL LETTER - WHITE	X
1	DRIVE-THRU CANOPY - 4'-0"D x 9'-0"W x 6'H	X

SIGN SCHEDULE N.T.S. **C**

SYMBOL	AREA	MANUFACTURER	COLOR	ALTERNATE MFR.	ALTERNATE COLOR	CONTACT INFORMATION
1	CANOPY RAFTER/ BEAM PAINT	SHERWIN WILLIAMS	SW3022 'WOODSCAPES BLACK ALDER'			SHERWIN WILLIAMS: BRAD HARRINGTON, 216-228-54988 (PHONE), BRAD.E.HARRINGTON@SHERWIN.COM (EMAIL)
2	CANOPY COLUMN PAINT	SHERWIN WILLIAMS	SW 7062 ROCK BOTTOM			
3	PARAPET CAP (TOWER)	DUROLAST (25)	MEDIUM BRONZE (FACTORY FINISH)	SHERWIN WILLIAMS	SW 7069 'IRON ORE'	DURO-LAST: LEE COBB, 800-434-3876 (PHONE)
4	PARAPET CAP (FRONT)	DURALAST	SHERWIN WILLIAMS SW6832 'IMPULSE PURPLE' EGGSHELL (P-4)			
5	PARAPET CAP COLOR	DUROLAST (25)	GALVALUME PLUS (FACTORY FINISH)			
6	PARAPET CAP (COOLER)	DUROLAST (25)	GALVALUME PLUS (FACTORY FINISH)			
7	STOREFRONT WINDOWS	TBD	CLEAR ANODIZED			
8	PIPE BOLLARDS	STREET SMART	YELLOW - 1/4" THICK PLASTIC COVER (US.POSTMAN.COM) OR EQUAL			
9	PARAPET BACK ROOFING	DUROLAST	THE COLOR SHALL BE FACTORY COLORED 'TAN.' EQUAL ALTERNATE ALLOWED.			DURO-LAST: LEE COBB, 800-434-3876 (PHONE)
10	AWNING, PATIO ROOF, COOLER WALL	BERRIDGE	S-DECK PREWEATHERED GALVALUME			
11	VALANCE COLOR	SIGN VENDOR	SW 7034 'STATUS BRONZE' (EQUAL)			
12	MAIN BUILDING COLOR	SHERWIN WILLIAMS	SW 7067 'CITYSCAPE'	STO LOTUSAN	NA17-0014	SHERWIN WILLIAMS: BRAD HARRINGTON, 216-341-5558 X115 (PHONE), BRAD.E.HARRINGTON@SHERWIN.COM
13	ACCENT COLOR	SHERWIN WILLIAMS	SW 6098 'PACER WHITE'	STO LOTUSAN	NA17-0008	EIFS CONTACT: STO CORP.; CHUCK DUFFIN, 940-894-2092 (PHONE), 940-894-2095 (FAX), CDUFFIN@STOCORP.COM
14	WALL COLOR BEHIND SCREEN WALL	SHERWIN WILLIAMS	SW 6831 'CLEMATIS'	STO LOTUSAN	NA14-0004	
15	NOT USED					
16	METAL PANELS	WESTERN STATES METAL ROOFING	18" A606-4 RUSTWALL PANELS			WESTERN METAL DECK: RUSTY FAILS - RUSTY@METALDECK.COM - WWW.METALDECK.COM
17	SLAT WALL	GTC	ALUMAWOOD BARN WOOD, NUSTONE HIGH IMPACT EMBOSSED WOOD GRAIN TEXTURE			

EXTERIOR FINISH SCHEDULE **H**

- (1) BUILDING SIGN, BY VENDOR. SEE STRUCTURAL BLOCKING ELEVATIONS, SHEET SS.0 FOR MORE INFORMATION. SEE ELECTRICAL PLANS FOR POWER REQUIREMENTS.
- (2) DRIVE THRU WINDOW. SEE SHEET A1.0 AND A1.1.
- (3) DASHED LINE INDICATES ROOF BEYOND.
- (4) STOREFRONT, TYPICAL.
- (5) TUBE STEEL POST. SEE STRUCTURAL DWGS.
- (6) SWITCH GEAR. PAINT TO MATCH WALL.
- (7) WALL PACK LIGHT FIXTURE.
- (8) LIGHT SCONCE. ALIGN BOTTOM OF FIXTURE'S MOUNTING BRACKET WITH EIFS REVEAL / CHANGE IN EIFS THICKNESS.
- (9) ASSUME D/T LANE SURFACE IS 6" BELOW THE FINISH FLOOR. REFER TO GRADING & SITE PLAN.
- (10) NOT USED
- (11) TOWER WITH METAL PANEL FINISH.
- (12) PARAPET COPING. IF DURO-LAST EDGE TRIM IS USED. USE THE DURO-LAST PRE-FINISHED EDGE TRIM. SEE DETAIL 2/A6.0.
- (13) CO2 FILLER VALVE & COVER. SEE DETAIL 5/A6.2 SIM.
- (14) DRIVE-THRU CANOPY BY OTHERS.
- (15) GAS SERVICE.
- (16) WALL SHALL BE FINISHED PRIOR TO INSTALLATION OF SWITCHGEAR.
- (17) SCUPPER, COLLECTOR, AND VERTICAL DOWNSPOUT 6" MIN. PAINT TO MATCH ADJACENT WALL.
- (18) CONCRETE CURB.
- (19) RTU BEYOND. PAINT TO MATCH MAIN BUILDING COLOR.
- (20) BREAK METAL COVER OVER WOOD STUDS TO MATCH STOREFRONT. SEE 3/A6.1
- (21) OVERFLOW SCUPPER, SEE ROOF PLAN.
- (22) WOOD RAFTERS. SEE STRUCTURAL DWGS.
- (23) BOLLARD
- (24) DUROLAST SINGLE MEMBRANE ROOFING OR EQUAL.
- (25) IF THE DURO LAST PARAPET CAP TRIM IS USED IT SHALL NOT BE PAINTED.
- (26) WOOD HEADER BEAM. SEE STRUCTURAL DWGS.
- (27) NOT USED
- (28) STAIN COLOR FOR FASCIA AND SOFFIT.
- (29) STOREFRONT DOOR. REFER TO DOOR SCHEDULE.
- (30) HOSE BIBB LOCATION. REFER TO PLUMBING AND DETAIL 8/A6.2
- (31) GUTTER AND DOWNSPOUT. PAINT TO MATCH COLUMN
- (32) METAL ROOFING.
- (33) PATIO RAILING
- (34) EIFS (TYP). SEE 2 & 4/A6.2.

KEY NOTES **D**

CONTRACT DATE: XX.XX.XX
BUILDING TYPE: EXPLORER LITE LG
PLAN VERSION: DECEMBER 2016
BRAND DESIGNER: XXXXX
SITE NUMBER: 312921
STORE NUMBER: XXXXX

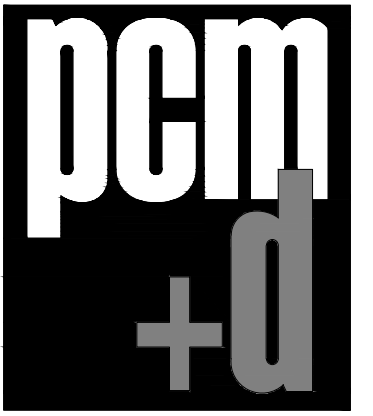
TACO BELL
4115 W. Partridge Way
Peoria, IL 61615



EXPLORER LITE
LARGE50

EXTERIOR ELEVATIONS

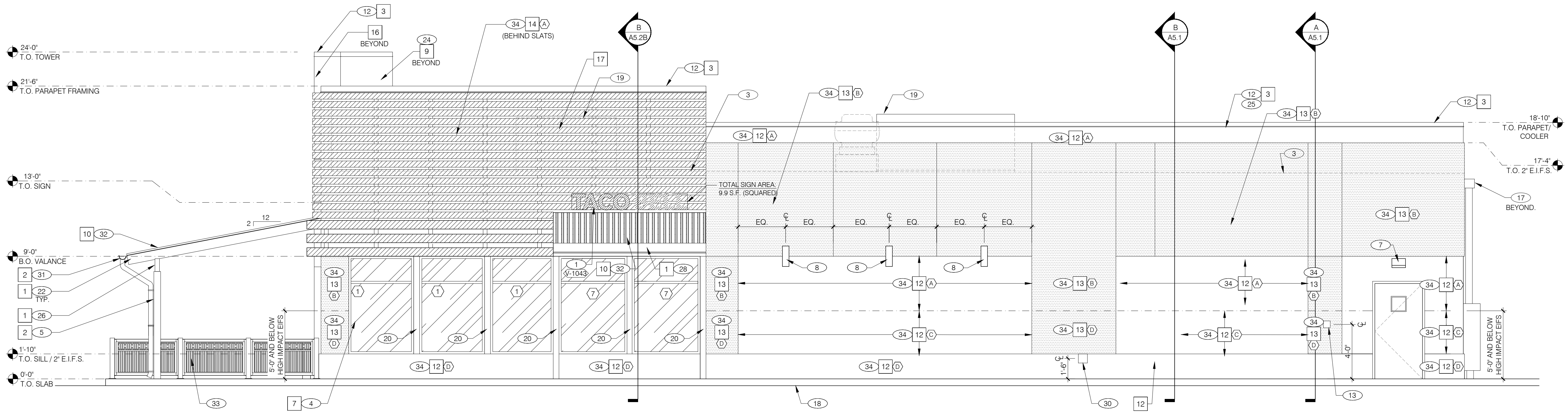
A4.0B



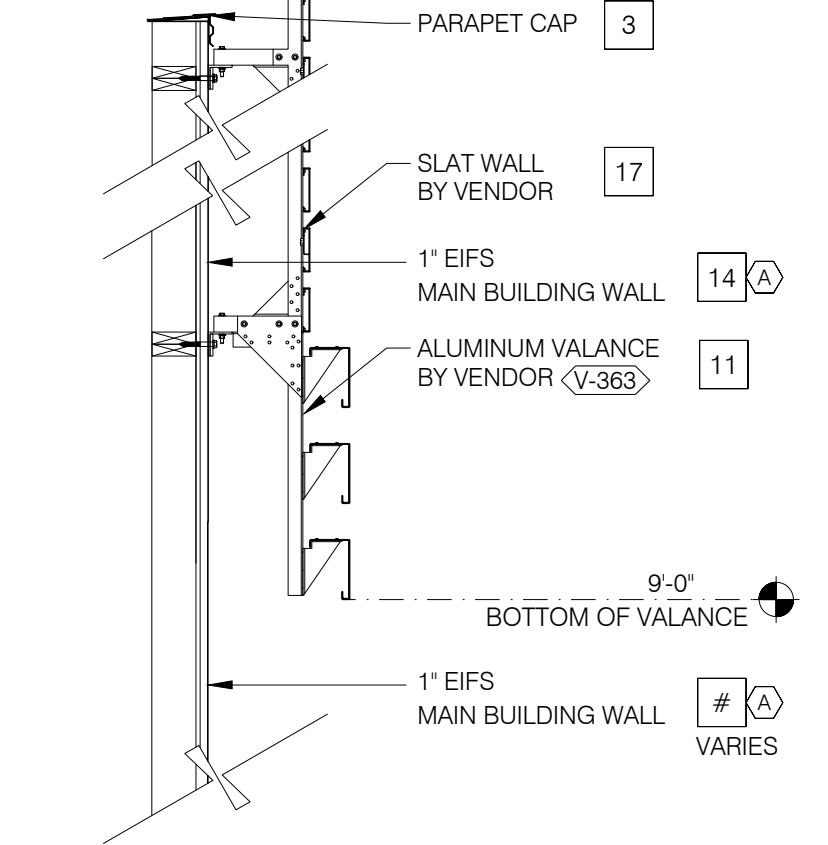
pem+d
905 W. Main Street, Suite 300
Peoria, IL 61606
Phone: 309 694 5912
Professional Design Firm
Registration #184.005700



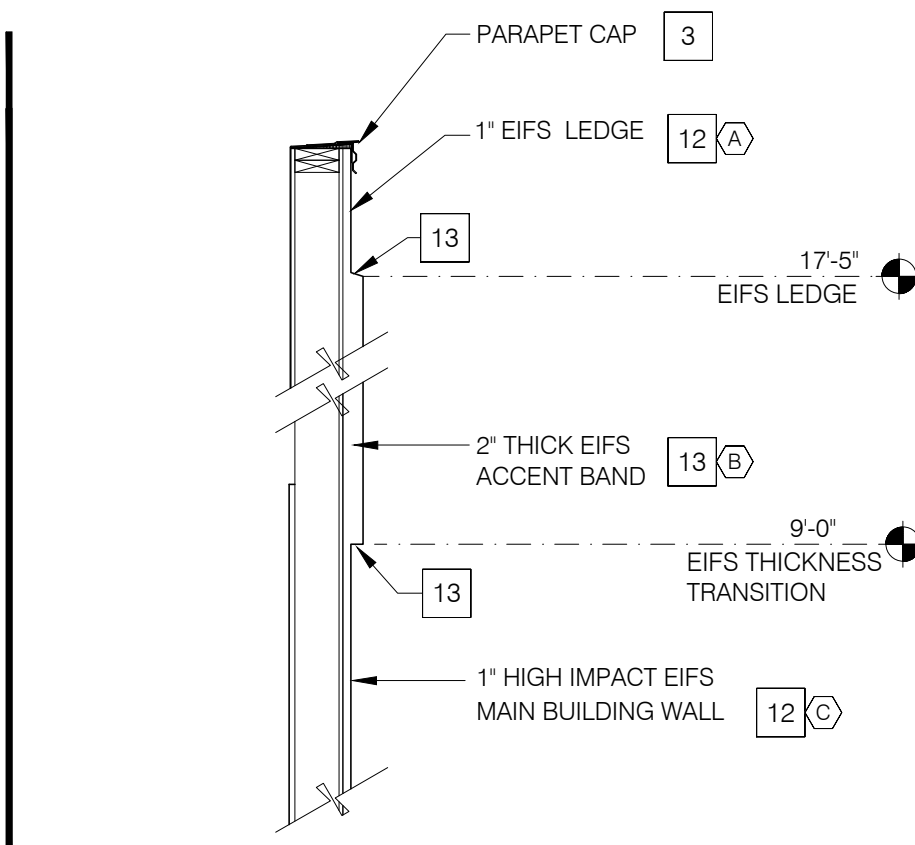
www.keithmep.com
707 NE Jefferson Ave Peoria, IL 61603
309 / 693-4025 : office
309 / 214-0063 : fax
PROFESSIONAL DESIGN FIRM
#184-03470



RIGHT SIDE ELEVATION 1/4"=1'-0" **A**



SLAT WALL COLOR TRANSITION N.T.S. **I**



EIFS THICKNESS COLOR TRANSITION N.T.S. **G**

MISCELLANEOUS
A. SEE SHT A1.1 "WINDOW TYPES" FOR WINDOW ELEVATIONS.

SEALERS (REFER TO SPECS):
A. SEALANT AT ALL WALL AND ROOF PENETRATIONS.
B. SEALANT AT ALL WINDOW AND DOOR FRAMES AT HEAD AND JAMB. DO NOT SEAL SILL @ WINDOWS.
C. APPLY NEOPRENE GASKET (CONT.) BETWEEN BUILDING & CANOPY.

"CRITICAL" DIMENSIONS:
A. REQUIRED CLEAR OPENING WIDTH TO ENSURE COORDINATION WITH STANDARD SIGNAGE/ BUILDING ELEMENTS DIMENSIONS.

NOTE: NO EXTERIOR SIGNS ARE WITHIN THE SCOPE OF WORK COVERED BY THE BUILDING PERMIT APPLICATION. THE GENERAL CONTRACTOR SHALL BE RESPONSIBLE FOR COORDINATING THE INSTALLATION OF ALL EXTERIOR SIGNS AND INSTALLATION OF REQUIRED BLOCKING AND ELECTRICAL CONNECTIONS FOR FINAL APPROVED SIGNS.

PAINTING OVER EIFS/STUCCO:
APPLICATOR MUST DO THEIR DUE DILIGENCE WITH PREPARATION.
PRIMER: 1 COAT SW A214W8300, LOXON CONCRETE & MASONRY PRIMER.
FINISH: 2 COATS SW A82-100 SERIES, A-100 EXTERIOR LATEX SATIN.

- (A) BASE THICKNESS - 1" THICK E.I.F.S.
- (B) BASE THICKNESS - 2" THICK E.I.F.S.
- (C) BASE THICKNESS - 1" THICK E.I.F.S. WITH HIGH IMPACT MESH (ONLY WHERE NOTED). SEE DETAIL 2/A6.2.
- (D) BASE THICKNESS - 2" THICK E.I.F.S. WITH HIGH IMPACT MESH (ONLY WHERE NOTED). SEE DETAIL 2/A6.2.

E.I.F.S. THICKNESS N.T.S. **B**

NOTE: SIGNAGE UNDER SEPARATE PERMIT

QTY	ITEM DESCRIPTION	ELEC
2	TB 3'-6" x 4'-0" LOGO BELL - FACE LIT	X
3	TB 14" CHANNEL LETTER - WHITE	X
1	DRIVE-THRU CANOPY - 4'-0"D x 9'-0"W x 6'H	X

SIGN SCHEDULE N.T.S. **C**

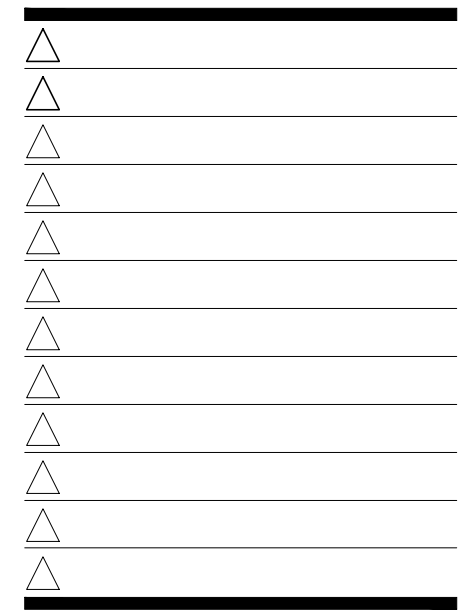
GENERAL NOTES **F**

EIFS NOTES **E**

KEY NOTES **D**

EXTERIOR FINISH SCHEDULE **H**

SYMBOL	AREA	MANUFACTURER	COLOR	ALTERNATE MFR.	ALTERNATE COLOR	CONTACT INFORMATION
1	CANOPY RAFTER/ BEAM PAINT	SHERWIN WILLIAMS	SW3022 "WOODSCAPES BLACK ALDER"			SHERWIN WILLIAMS: BRAD HARRINGTON, 216-228-54988 (PHONE), BRAD.E.HARRINGTON@SHERWIN.COM (EMAIL)
2	CANOPY COLUMN PAINT	SHERWIN WILLIAMS	SW 7062 ROCK BOTTOM			
3	PARAPET CAP (TOWER)	DUROLAST (25)	MEDIUM BRONZE (FACTORY FINISH)	SHERWIN WILLIAMS	SW 7069 "IRON ORE"	DURO-LAST: LEE COBB, 800-434-3876 (PHONE)
4	PARAPET CAP (FRONT)	DURALAST	SHERWIN WILLIAMS SW6832 "IMPULSE PURPLE" EGGSHELL (P-4)			
5	PARAPET CAP COLOR	DUROLAST (25)	GALVALUME PLUS (FACTORY FINISH)			
6	PARAPET CAP (COOLER)	DUROLAST (25)	GALVALUME PLUS (FACTORY FINISH)			
7	STOREFRONT WINDOWS	TBD	CLEAR ANODIZED			
8	PIPE BOLLARDS	STREET SMART	YELLOW - 1/4" THICK PLASTIC COVER (US.POSTMAN.COM) OR EQUAL			
9	PARAPET BACK ROOFING	DUROLAST	THE COLOR SHALL BE FACTORY COLORED "TAN." EQUAL ALTERNATE ALLOWED.			DURO-LAST: LEE COBB, 800-434-3876 (PHONE)
10	AWNING, PATIO ROOF, COOLER WALL	BERRIDGE	S-DECK PREWEATHERED GALVALUME			
11	VALANCE COLOR	SIGN VENDOR	SW 7034 "STATUS BRONZE" (EQUAL)			
12	MAIN BUILDING COLOR	SHERWIN WILLIAMS	SW 7067 "CITYSCAPE"	STO LOTUSAN	NA17-0014	SHERWIN WILLIAMS: BRAD HARRINGTON, 216-341-5558 X115 (PHONE), BRAD.E.HARRINGTON@SHERWIN.COM
13	ACCENT COLOR	SHERWIN WILLIAMS	SW 6098 "PACER WHITE"	STO LOTUSAN	NA17-0008	EIFS CONTACT: STO CORP.; CHUCK DUFFIN, 940-894-2092 (PHONE), 940-894-2095 (FAX), CDUFFIN@STOCORP.COM
14	WALL COLOR BEHIND SCREEN WALL	SHERWIN WILLIAMS	SW 6831 "CLEMATIS"	STO LOTUSAN	NA14-0004	
15	NOT USED					
16	METAL PANELS	WESTERN STATES METAL ROOFING	18" A606-4 RUSTWALL PANELS			WESTERN METAL DECK: RUSTY FAILS - RUSTY@METALDECK.COM - WWW.METALDECK.COM
17	SLAT WALL	GTC	ALUMAWOOD BARN WOOD, NUSTONE HIGH IMPACT EMBOSSED WOOD GRAIN TEXTURE			



CONTRACT DATE: XX.XX.XX
BUILDING TYPE: EXPLORER LITE LG
PLAN VERSION: DECEMBER 2016
BRAND DESIGNER: XXXXX
SITE NUMBER: 312921
STORE NUMBER: XXXXX

TACO BELL
4115 W. Partridge Way
Peoria, IL 61615



EXTERIOR ELEVATIONS

A4.0B