

Attachment A

JIMAX has agreed to demolition six (6) buildings, remove vegetation, and provide drainage improvements with the installation of a retention basin at the corner of the property where Darst and Clark meet. The current land assessed value is estimated to be \$40,000.00, after site improvements the value is estimated to increase to \$135,000.00. As a result of the lease agreement and improvements by the lessee, the City will realize an estimated cost savings of \$410,000.00 over the length of the ten-year (10) agreement. All improvements and demolition identified in this attachment shall be completed by March 31, 2022.

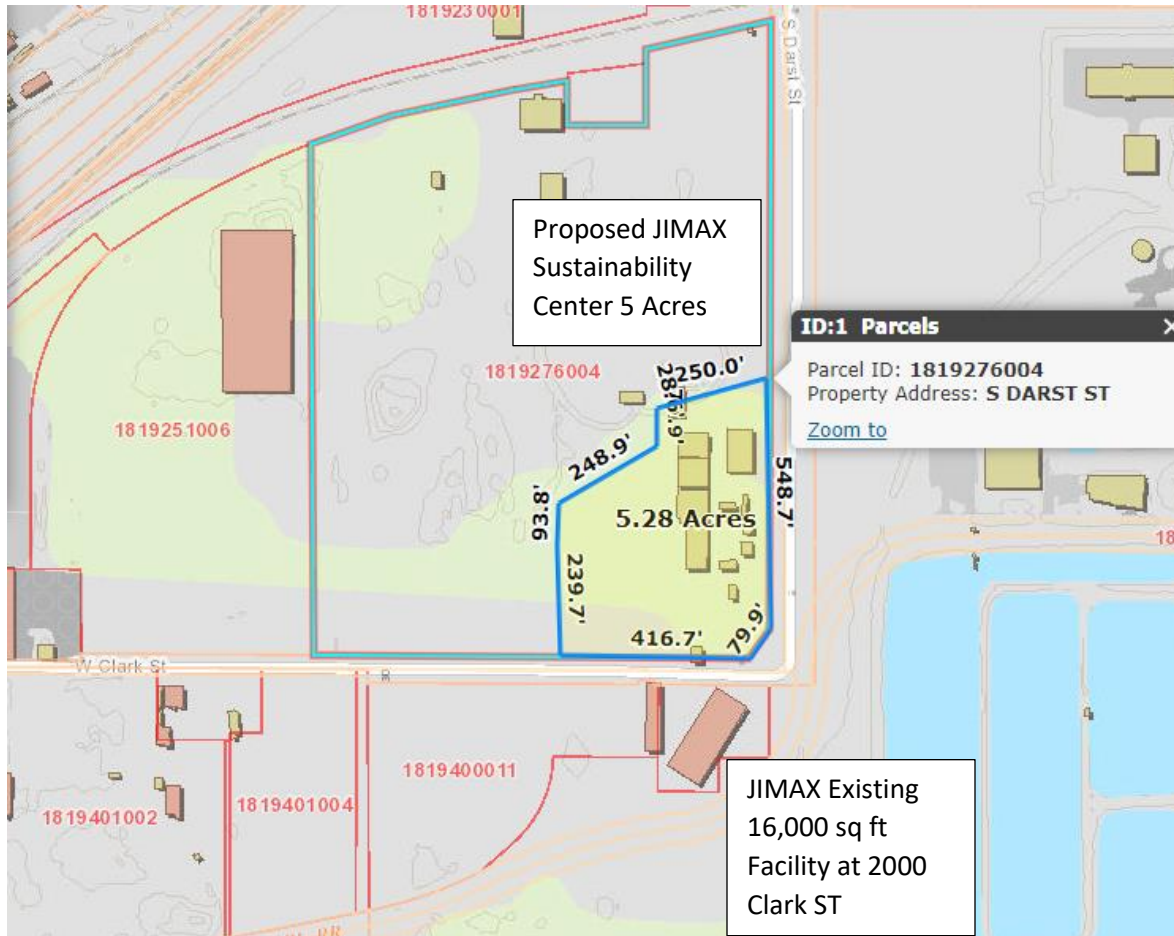


FIGURE 1.0: JIMAX LANDSCAPE SUSTAINABILITY CENTER, 2001 W. CLARK ST., PEORIA, IL. 61607 – Overall Location

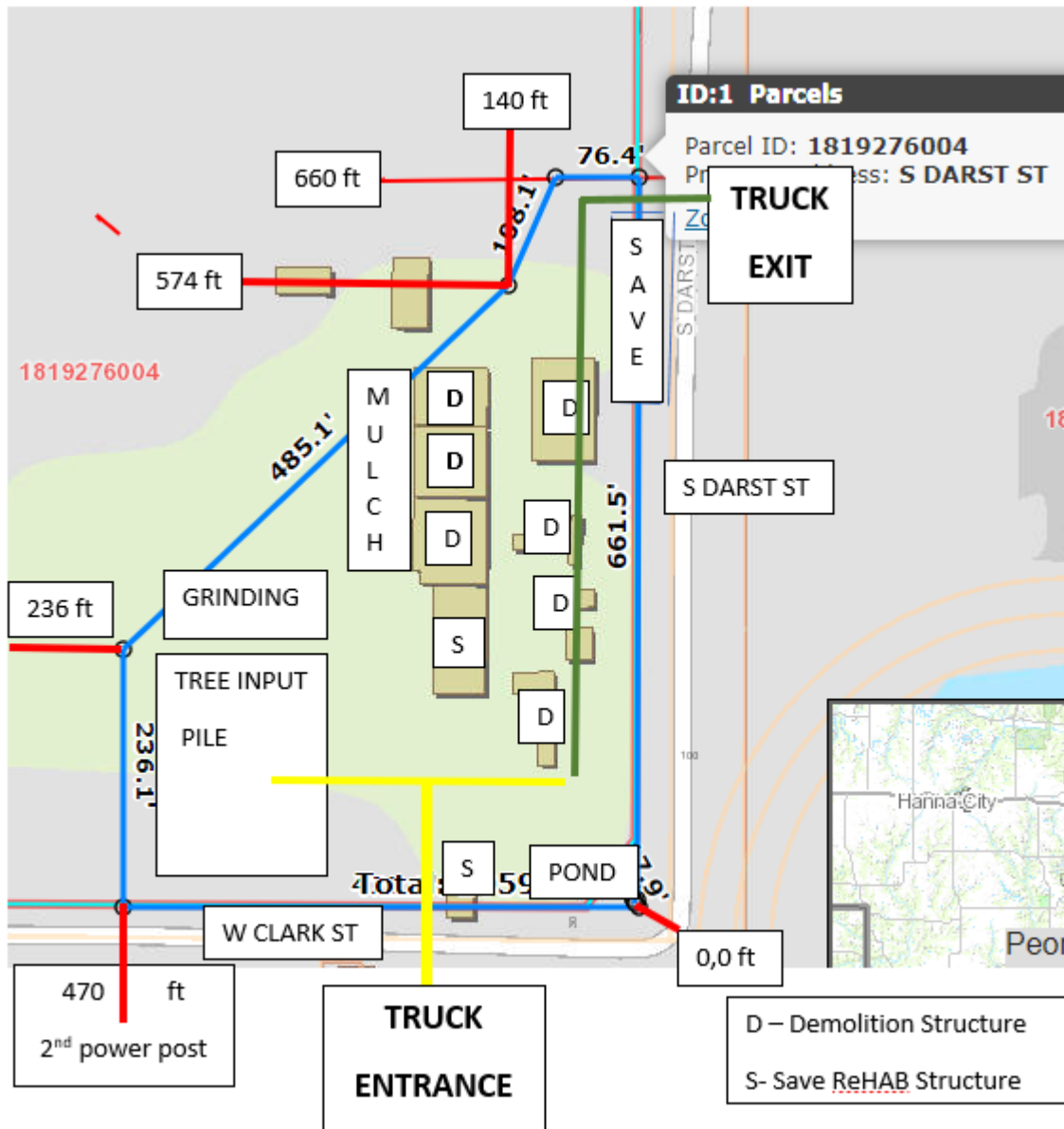


FIGURE 2.0: JIMAX LANDSCAPE SUSTAINABILITY CENTER, 2001 W. CLARK ST., PEORIA, IL. 61605

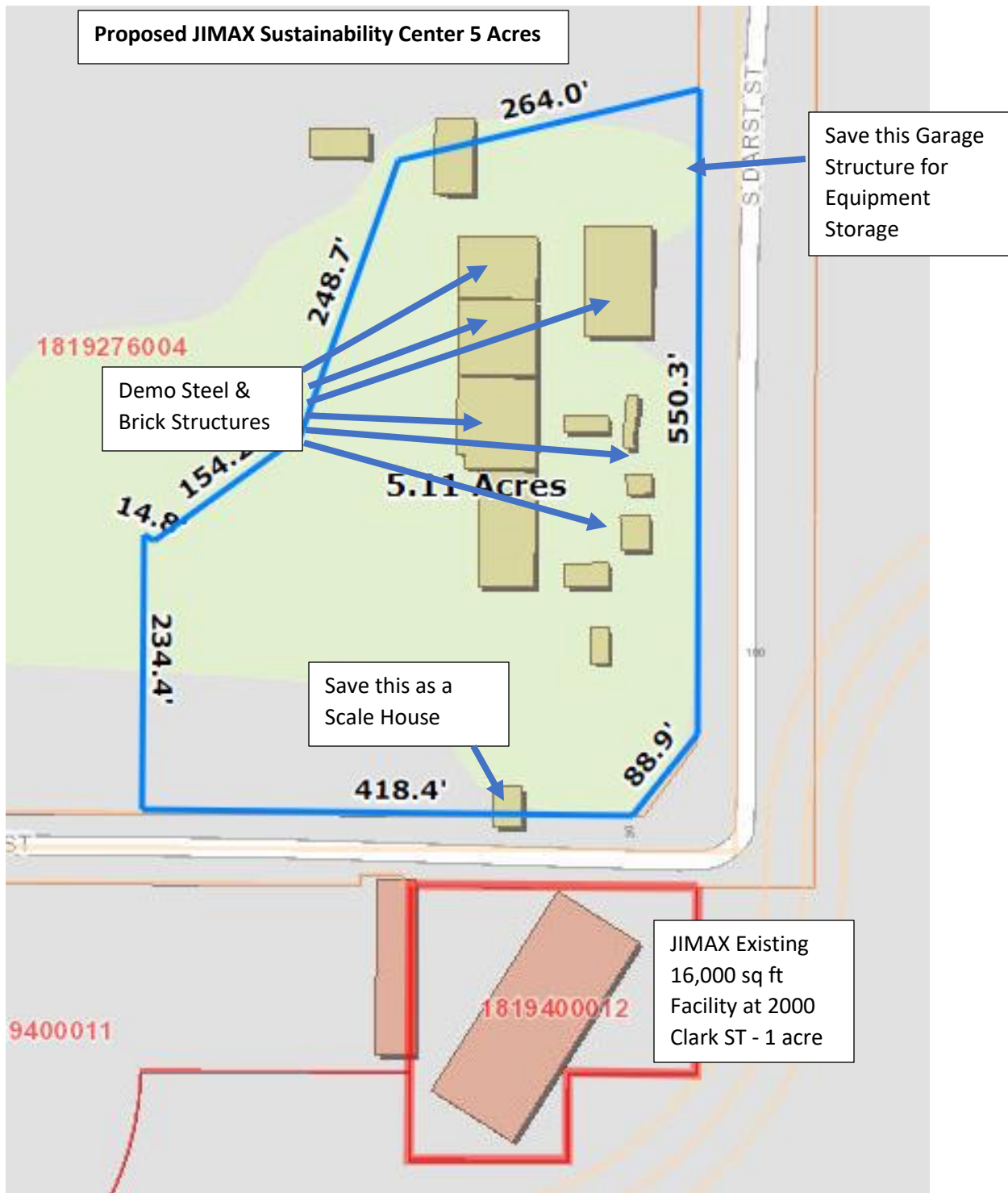
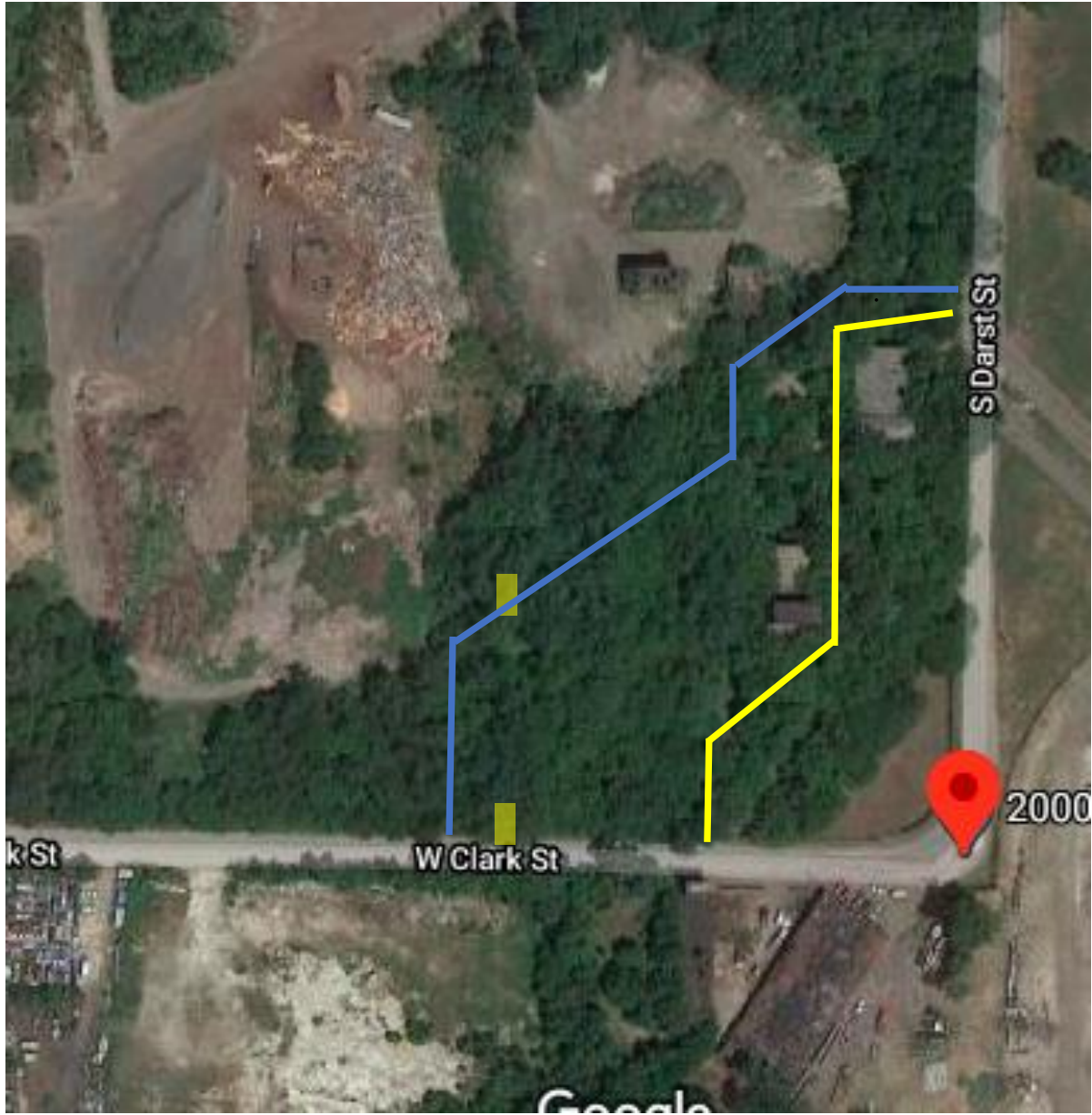


FIGURE 3.0: JIMAX LANDSCAPE SUSTAINABILITY CENTER, 2001 W. CLARK ST., PEORIA, IL. 61605 – Darst & Clark Close UP Layout of Structures.



Proposed Property Boundaries —————

Proposed Truck Routing —————

FIGURE 4.0: JIMAX LANDSCAPE SUSTAINABILITY CENTER, 2001 W. CLARK ST., PEORIA, IL. 61605 – Google Maps of Darst & Clark Site and Truck Routing through Property.