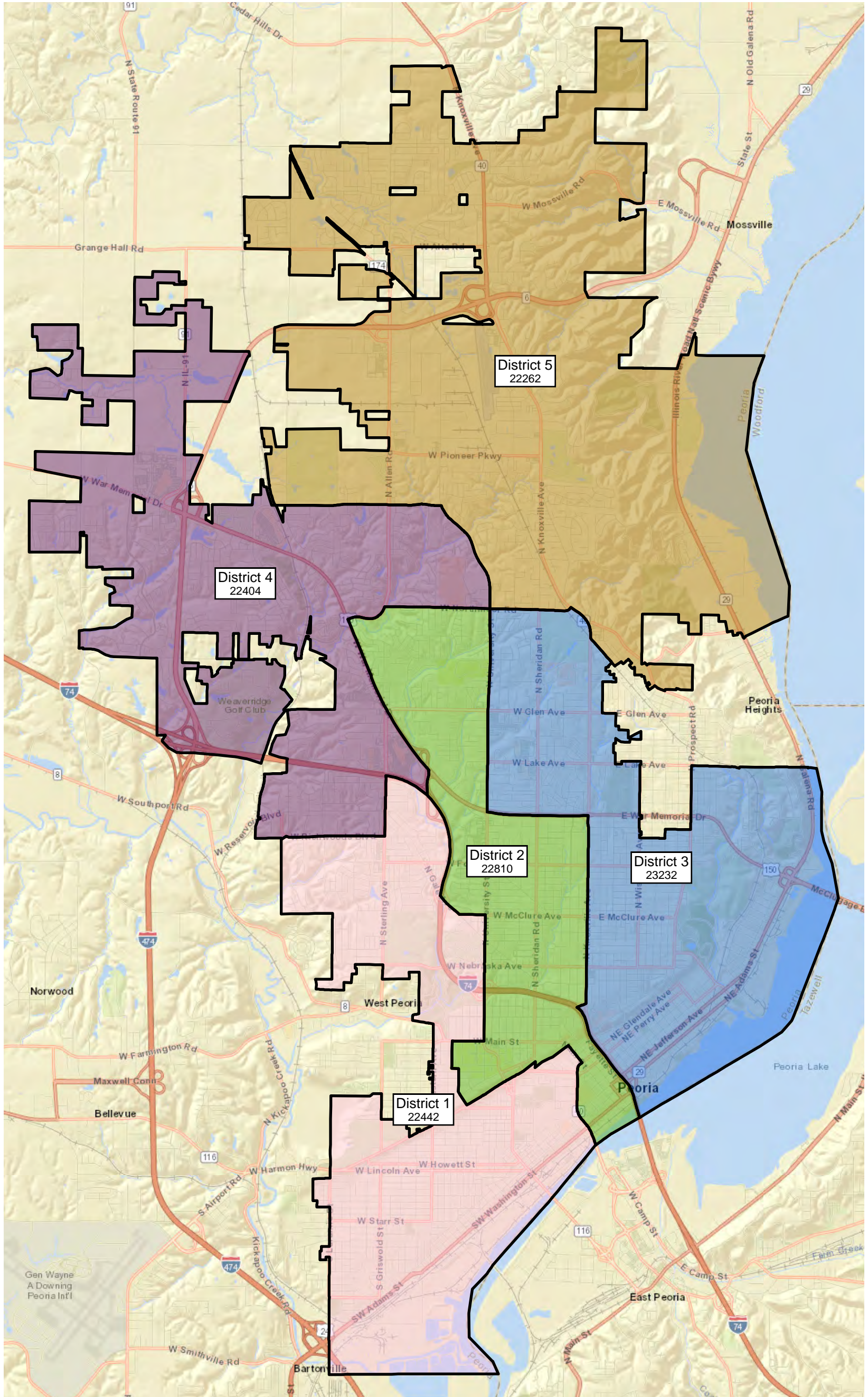
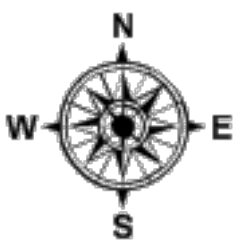
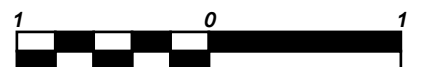


City of Peoria
Redistricting 2020

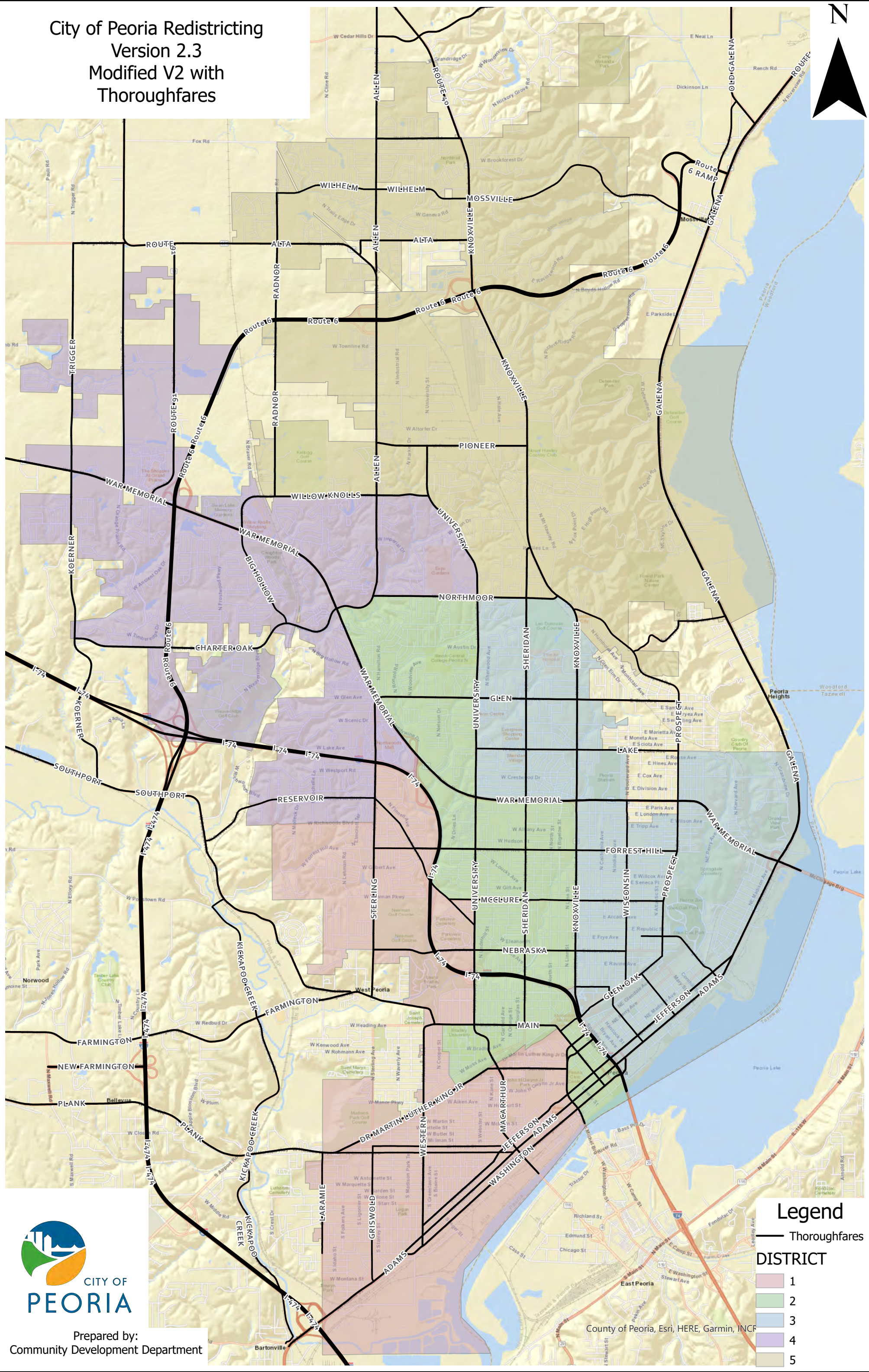
Version 2.3 - Modified V2 with Thoroughfares



1 INCH = 1 MILES



City of Peoria Redistricting
Version 2.3
Modified V2 with
Thoroughfares



Prepared by:
Community Development Department

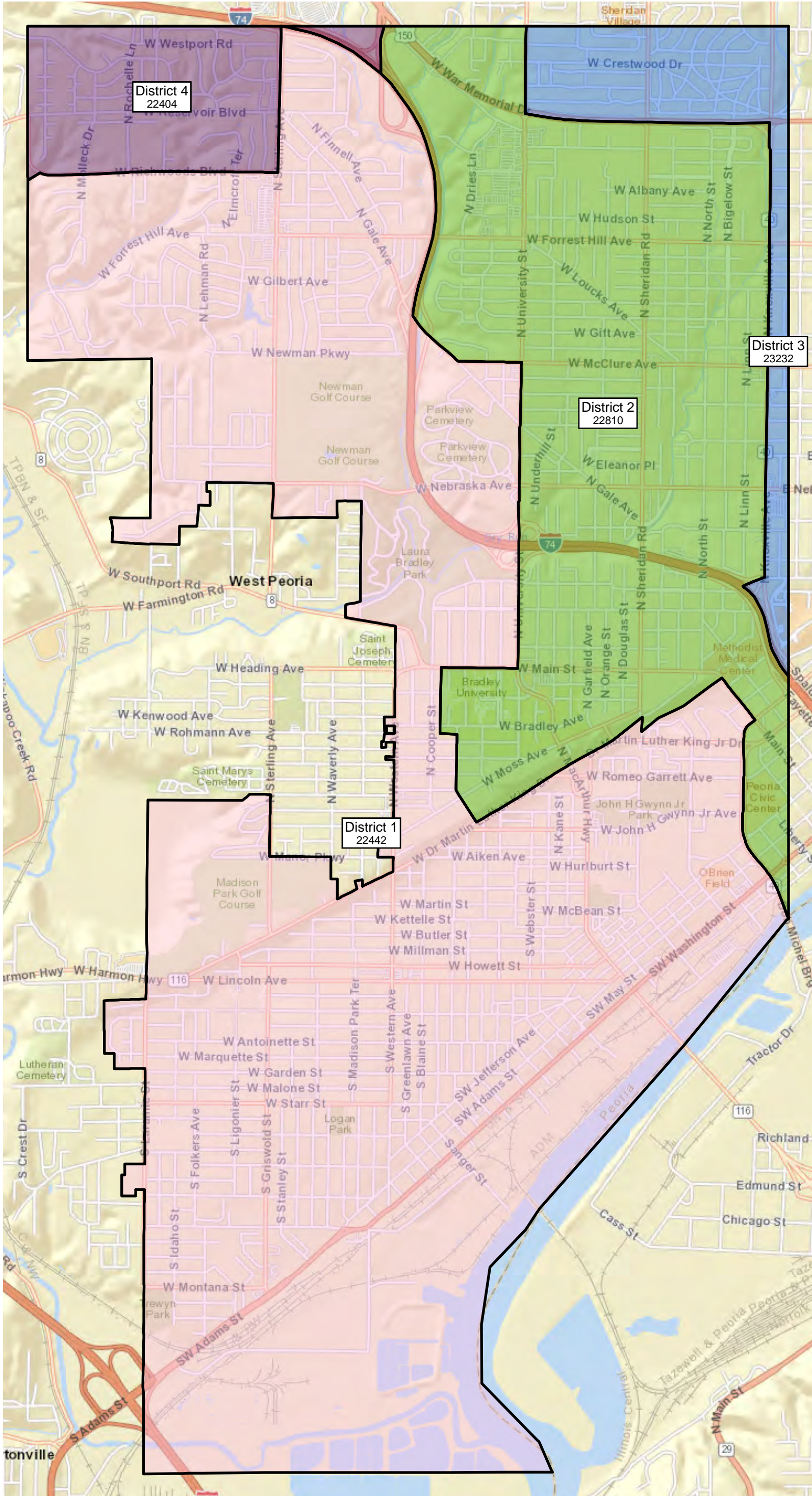
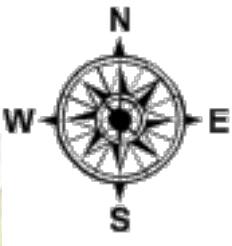
Legend

— Thoroughfares

DISTRICT

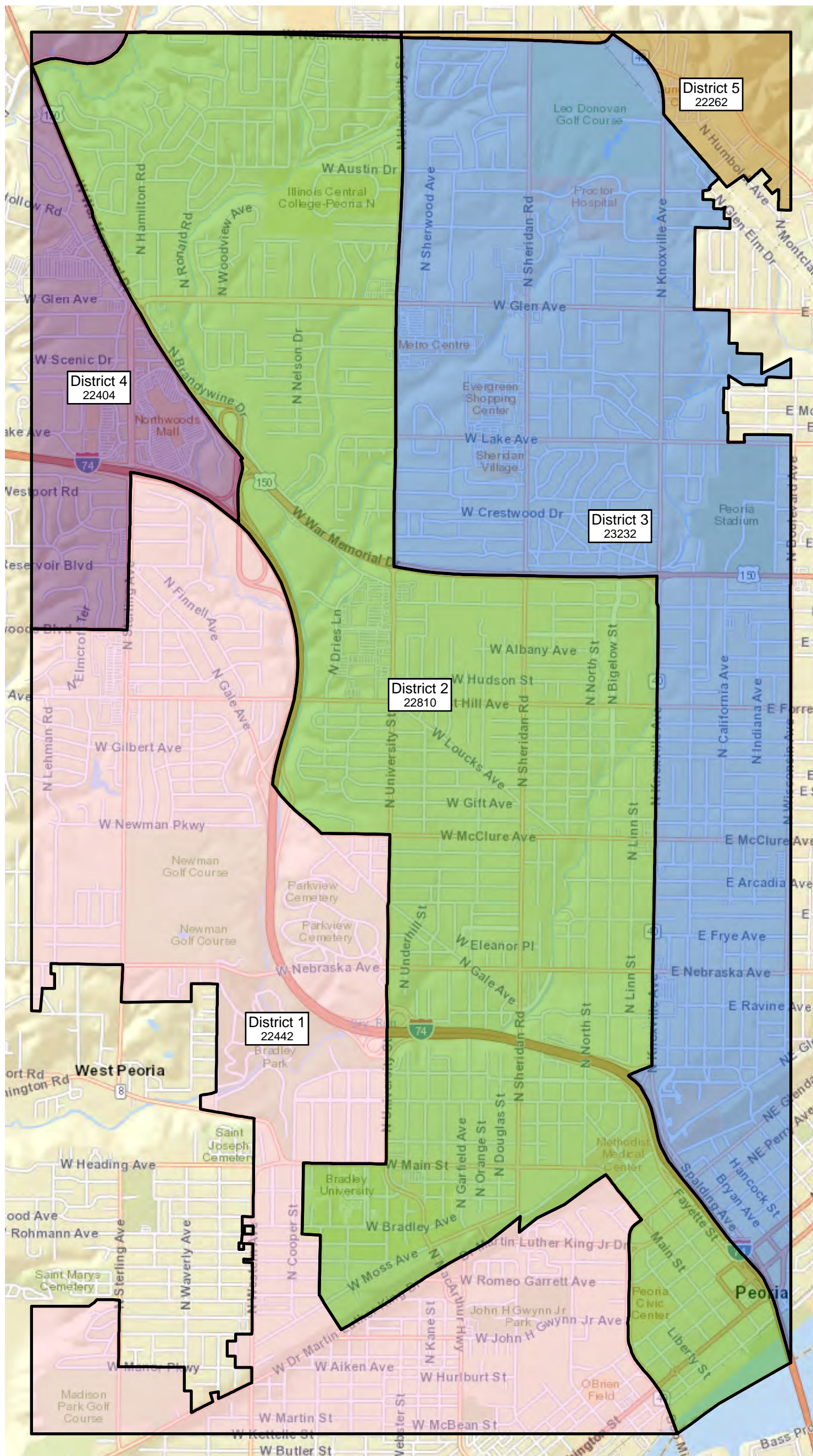
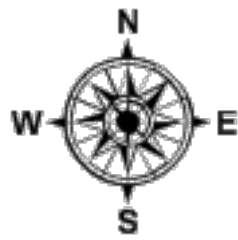
- 1
- 2
- 3
- 4
- 5

County of Peoria, Esri, HERE, Garmin, INCF

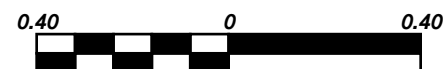


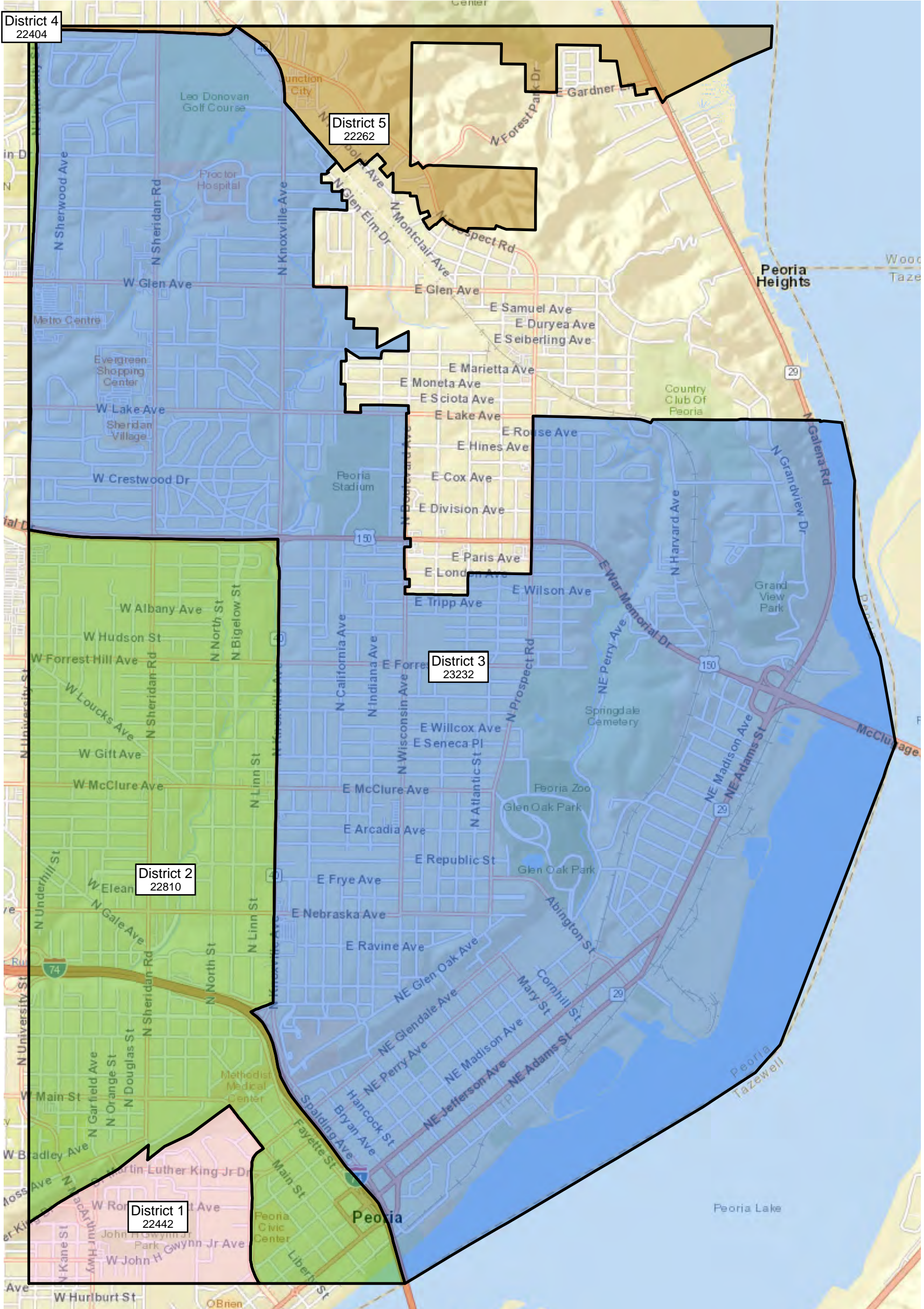
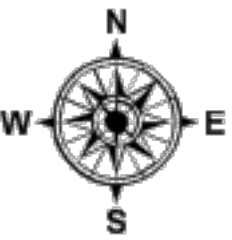
1 INCH = 0.4 MILES





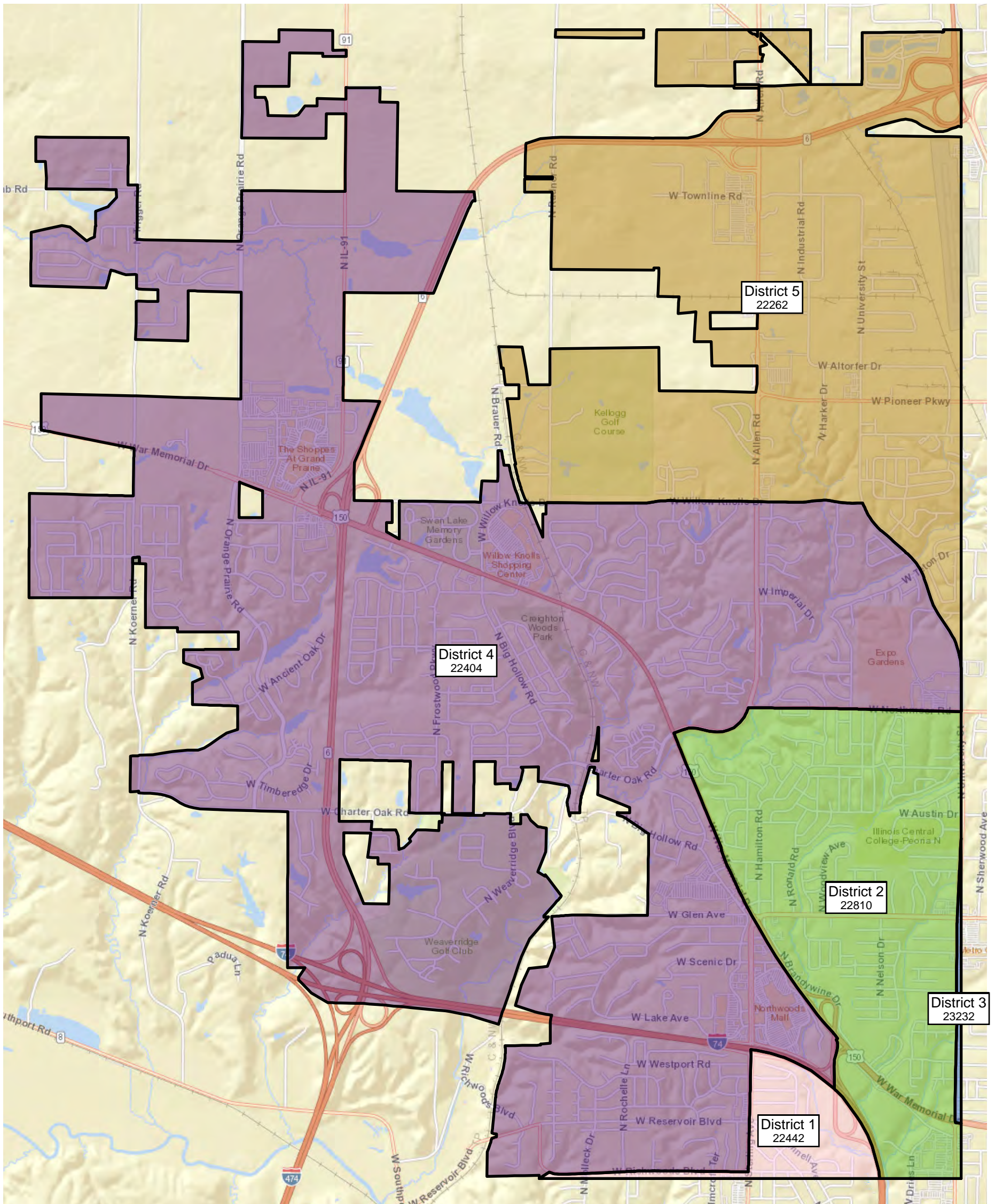
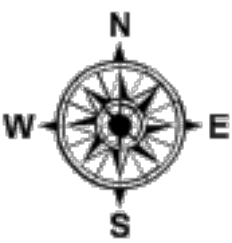
1 INCH = 0.4 MILES

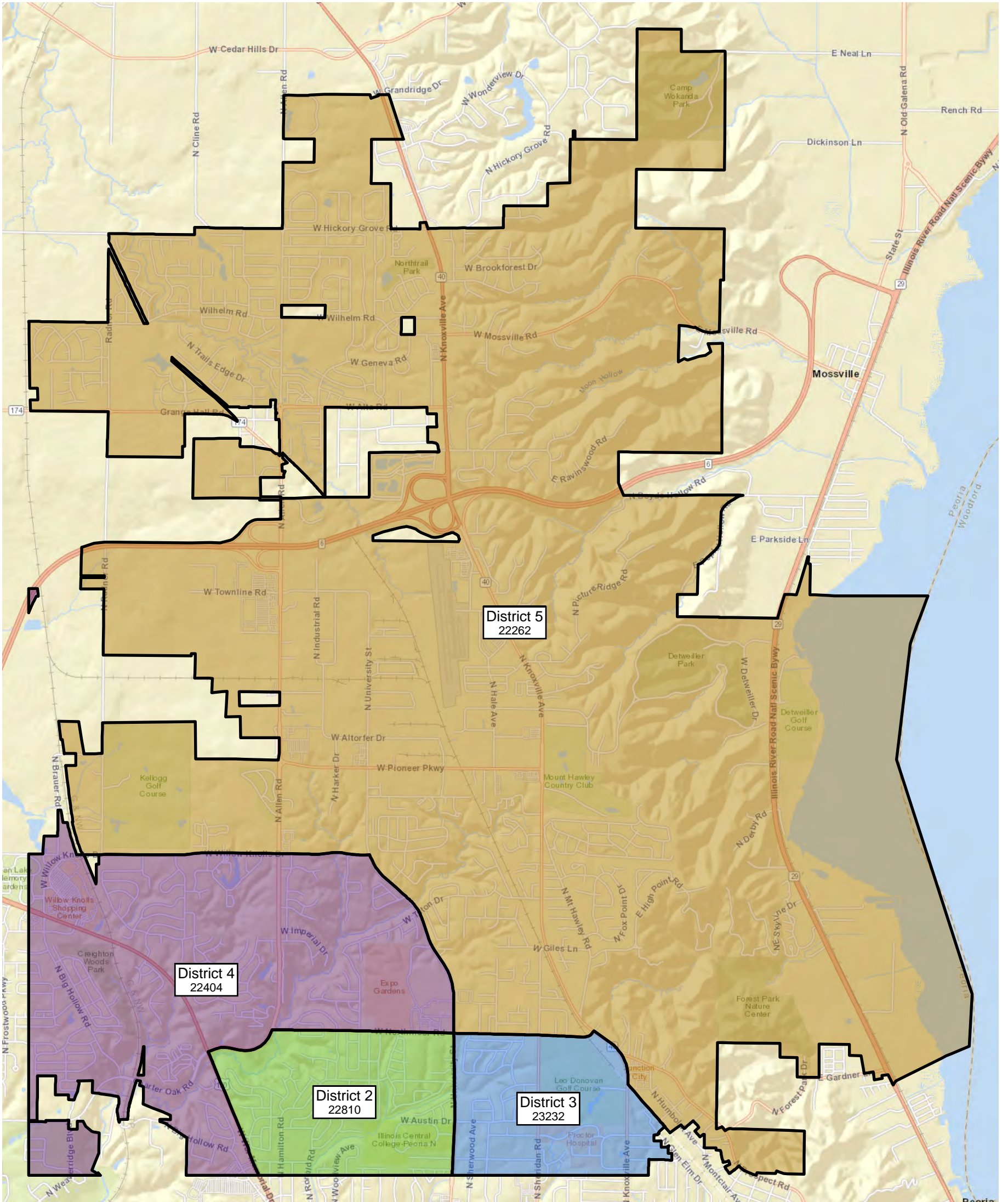
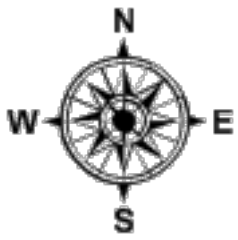




1 INCH = 0.4 MILES







1 INCH = 0.6 MILES



All Districts Summary Report

District No.	D1
Total Population	22,442
Total Population 18+	16,265
Deviation	-188
Dev. %	-0.831

	Total Hispanic	Total Non-Hispanic	Total	Hispanic	Non-Hispanic	Non-Hispanic white	Non-Hispanic black	Non-Hispanic American Indian/Alaskan Native	Non-Hispanic Asian	Non-Hispanic Hawaiian or Other Pacific Islander
Total	1,737	20,705	22,442	1,737	20,705	7,187	12,601	215	288	21
Total%	7.74	92.26	100.00	7.74	92.26	32.02	56.15	0.96	1.28	0.09
Total18+	1,125	15,140	22,442	1,125	15,140	6,212	8,255	180	217	17
Total18+%	6.92	93.08	137.98	6.92	93.08	38.19	50.75	1.11	1.33	0.10

	Total Hispanic	Total Non-Hispanic	Non-Hispanic some other race	Non-Hispanic two or more minority race
Total	1,737	20,705	218	175
Total%	7.74	92.26	0.97	0.78
Total18+	1,125	15,140	141	118
Total18+%	6.92	93.08	0.87	0.73

District No.	D2
Total Population	22,810
Total Population 18+	18,021
Deviation	180
Dev. %	0.795

	Total Hispanic	Total Non-Hispanic	Total	Hispanic	Non-Hispanic	Non-Hispanic white	Non-Hispanic black	Non-Hispanic American Indian/Alaskan Native	Non-Hispanic Asian	Non-Hispanic Hawaiian or Other Pacific Islander
Total	1,828	20,982	22,810	1,828	20,982	12,379	7,143	262	767	12
Total%	8.01	91.99	100.00	8.01	91.99	54.27	31.32	1.15	3.36	0.05
Total18+	1,274	16,747	22,810	1,274	16,747	10,762	4,819	214	654	9
Total18+%	7.07	92.93	126.57	7.07	92.93	59.72	26.74	1.19	3.63	0.05

	Total Hispanic	Total Non-Hispanic	Non-Hispanic some other race	Non-Hispanic two or more minority race
Total	1,828	20,982	230	189
Total%	8.01	91.99	1.01	0.83
Total18+	1,274	16,747	173	116
Total18+%	7.07	92.93	0.96	0.64

District No.	D3
---------------------	-----------

Total Population 23,232

Total Population 18+ 17,383

Deviation 602

Dev. % 2.66

	Total Hispanic	Total Non-Hispanic	Total	Hispanic	Non-Hispanic	Non-Hispanic white	Non-Hispanic black	Non-Hispanic American Indian/Alaskan Native	Non-Hispanic Asian	Non-Hispanic Hawaiian or Other Pacific Islander
Total	2,551	20,681	23,232	2,551	20,681	11,429	8,118	253	449	14
Total%	10.98	89.02	100.00	10.98	89.02	49.20	34.94	1.09	1.93	0.06
Total18+	1,631	15,752	23,232	1,631	15,752	9,817	5,084	220	363	11
Total18+%	9.38	90.62	133.65	9.38	90.62	56.47	29.25	1.27	2.09	0.06

	Total Hispanic	Total Non-Hispanic	Non-Hispanic some other race	Non-Hispanic two or more minority race
Total	2,551	20,681	229	189
Total%	10.98	89.02	0.99	0.81
Total18+	1,631	15,752	161	96
Total18+%	9.38	90.62	0.93	0.55

District No. D4

Total Population 22,404

Total Population 18+ 17,775

Deviation -226

Dev. % -0.999

	Total Hispanic	Total Non-Hispanic	Total	Hispanic	Non-Hispanic	Non-Hispanic white	Non-Hispanic black	Non-Hispanic American Indian/Alaskan Native	Non-Hispanic Asian	Non-Hispanic Hawaiian or Other Pacific Islander
Total	972	21,432	22,404	972	21,432	14,320	4,350	233	2,177	14
Total%	4.34	95.66	100.00	4.34	95.66	63.92	19.42	1.04	9.72	0.06
Total18+	622	17,153	22,404	622	17,153	12,060	3,057	176	1,629	10
Total18+%	3.50	96.50	126.04	3.50	96.50	67.85	17.20	0.99	9.16	0.06

	Total Hispanic	Total Non-Hispanic	Non-Hispanic some other race	Non-Hispanic two or more minority race
Total	972	21,432	230	108
Total%	4.34	95.66	1.03	0.48
Total18+	622	17,153	159	62
Total18+%	3.50	96.50	0.89	0.35

District No.	D5
---------------------	-----------

Total Population 22,262

Total Population 18+ 16,514

Deviation -368

Dev. % -1.626

	Total Hispanic	Total Non-Hispanic	Total	Hispanic	Non-Hispanic	Non-Hispanic white	Non-Hispanic black	Non-Hispanic American Indian/Alaskan Native	Non-Hispanic Asian	Non-Hispanic Hawaiian or Other Pacific Islander
Total	811	21,451	22,262	811	21,451	15,049	1,751	188	4,126	16
Total%	3.64	96.36	100.00	3.64	96.36	67.60	7.87	0.84	18.53	0.07
Total18+	501	16,013	22,262	501	16,013	11,786	1,152	137	2,717	7
Total18+%	3.03	96.97	134.81	3.03	96.97	71.37	6.98	0.83	16.45	0.04

	Total Hispanic	Total Non-Hispanic	Non-Hispanic some other race	Non-Hispanic two or more minority race
Total	811	21,451	251	70
Total%	3.64	96.36	1.13	0.31
Total18+	501	16,013	176	38
Total18+%	3.03	96.97	1.07	0.23