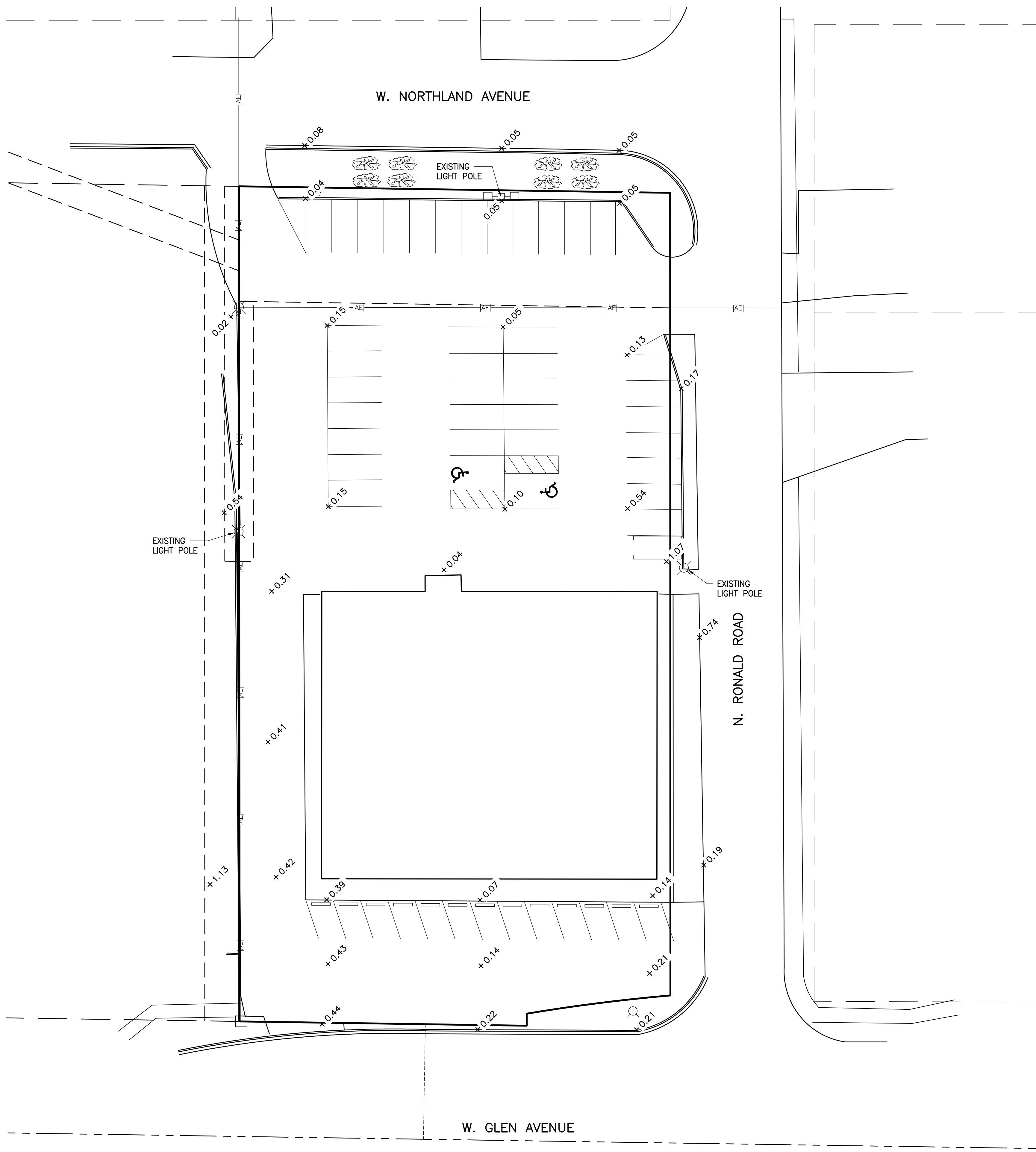


C:\Users\kuberg\appdata\local\temp\MP\Public\11337\Glen Avenue.dwg



LEGEND	
+3.78	FOOT CANDLE

NOTES:

- INSPECTION COMPLETED ON 10/29/19 REVEALED THAT LIGHTS AT NORTH AND WEST SIDE OF PARKING LOT ARE NOT WORKING. LIGHTS AT NORTH ENTRANCE ALSO NOT WORKING.
- OWNER IS EXPLORING THE POSSIBILITY OF UPGRADING THE LIGHTS TO LED WITH AMEREN.

REVISIONS	
No.	Description

**MAURER-STUTZ**  
ENGINEERS - SURVEYORS

PEORIA, IL 3116 N. DRESS LANE, SUITE 100 | PEORIA, IL 61604 | (309) 693-7615 | FAX (309) 693-7616  
 CANTON, IL 1670 EAST ASH STREET | CANTON, IL 61520 | (309) 647-7831 | FAX (309) 647-6155  
 MUNCIE, IN 6880 W. MILGORE AVENUE | MUNCIE, IN 47304 | (765) 773-8228 | FAX (309) 693-7616  
 ILLINOIS PROFESSIONAL DESIGN FIRM LICENSE #184-005754  
 www.mstutz.com "WORKING WITH YOU BY DESIGN"

PHOTOMETRIC PLAN

2301 W. GLEN AVENUE  
SPECIAL USE REQUEST

Client: 2301 INVESTMENTS, LLC

Designed By: KJP  
 Drawn By: KDR  
 Reviewed By: KJP  
 Date: 28 October 2019  
 Project No.: 23119012.00  
 Drawing:

2 OF 2