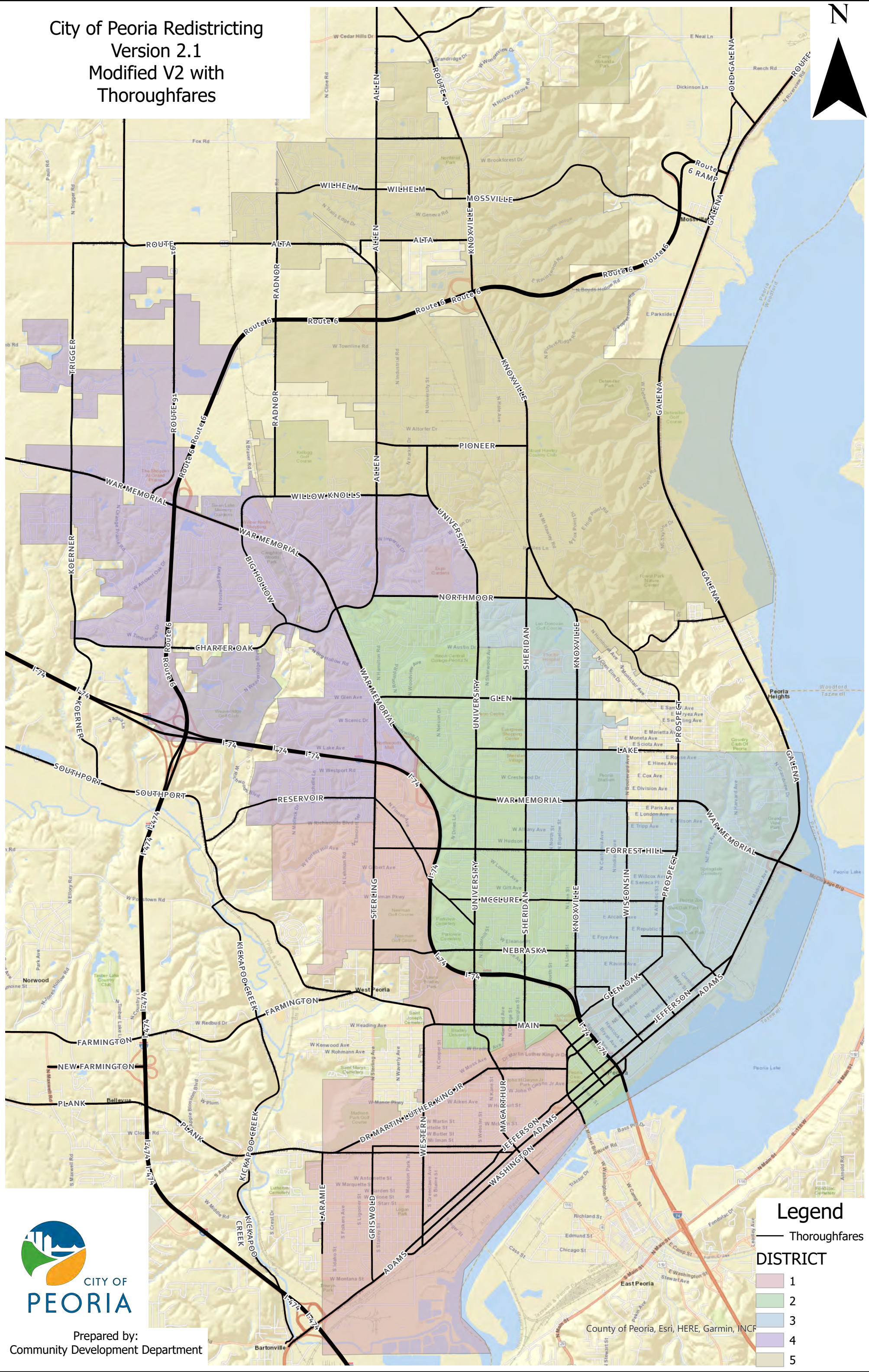


City of Peoria Redistricting
Version 2.1
Modified V2 with
Thoroughfares



Prepared by:
Community Development Department

Legend

— Thoroughfares

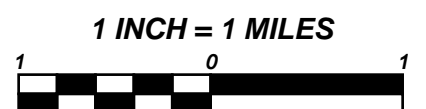
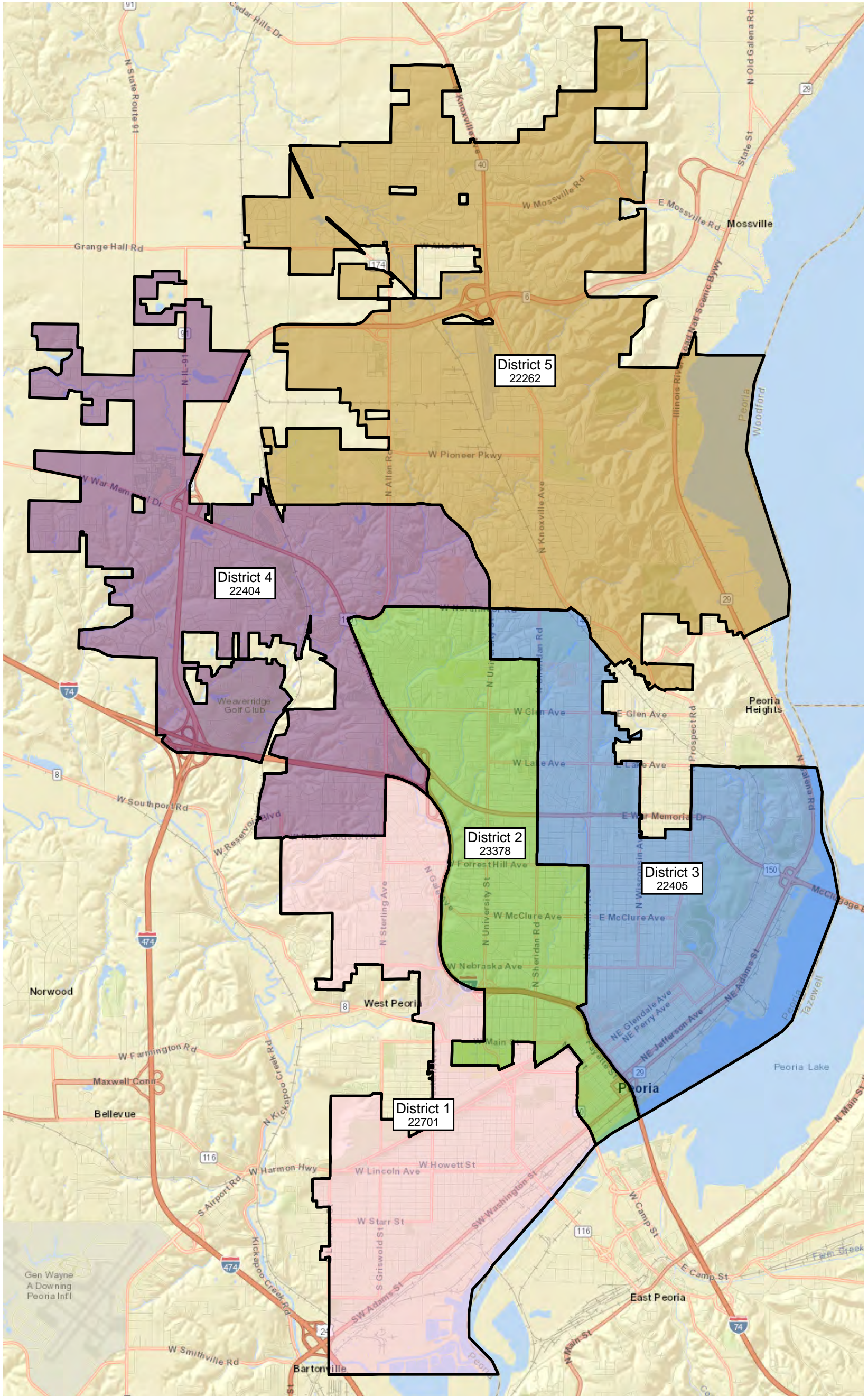
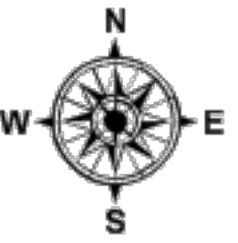
DISTRICT

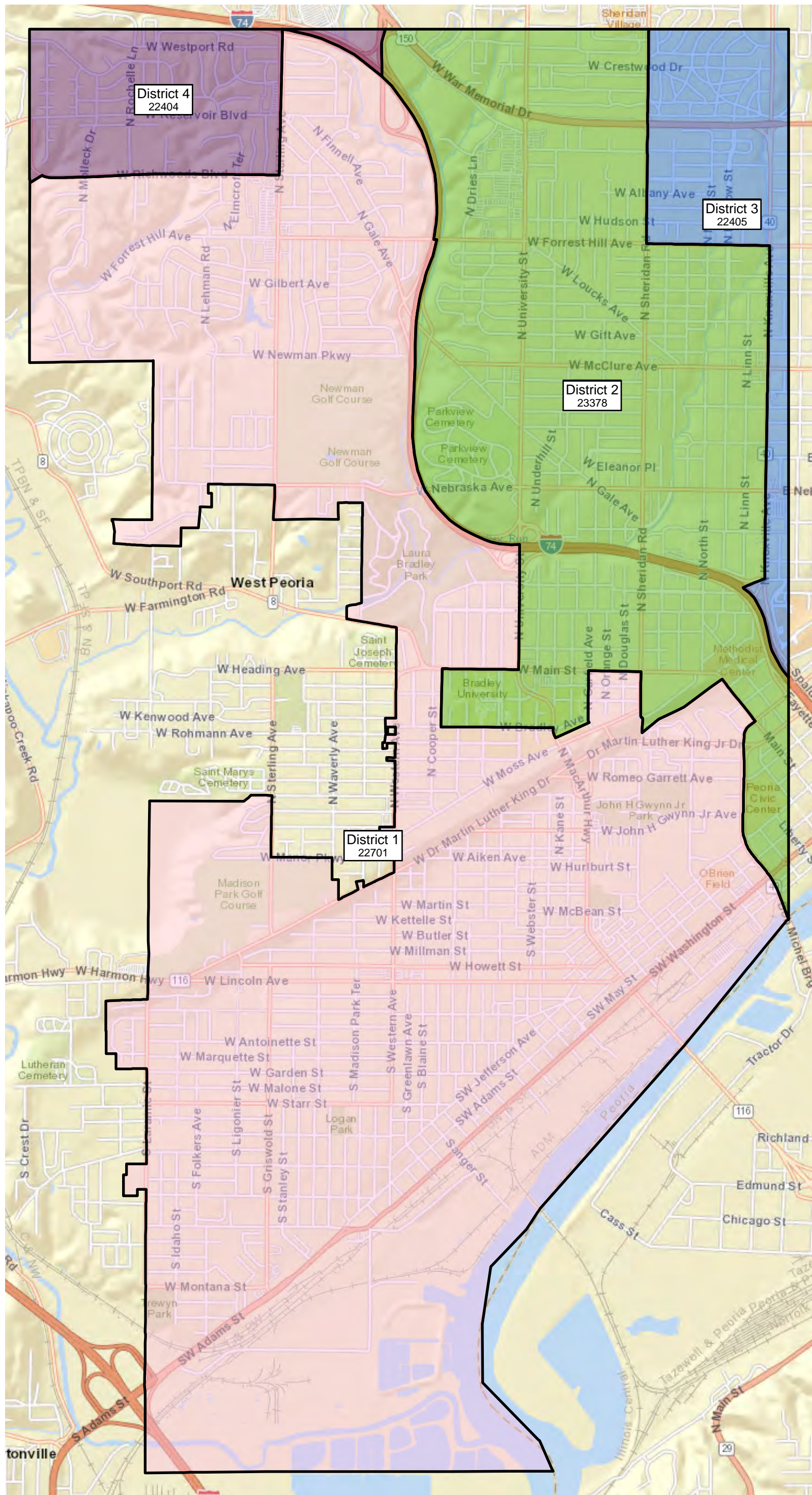
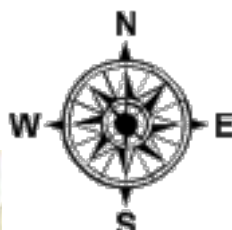
- 1
- 2
- 3
- 4
- 5

County of Peoria, Esri, HERE, Garmin, INCF

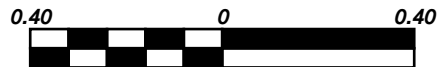
City of Peoria
Redistricting 2020

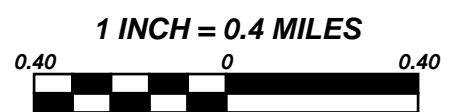
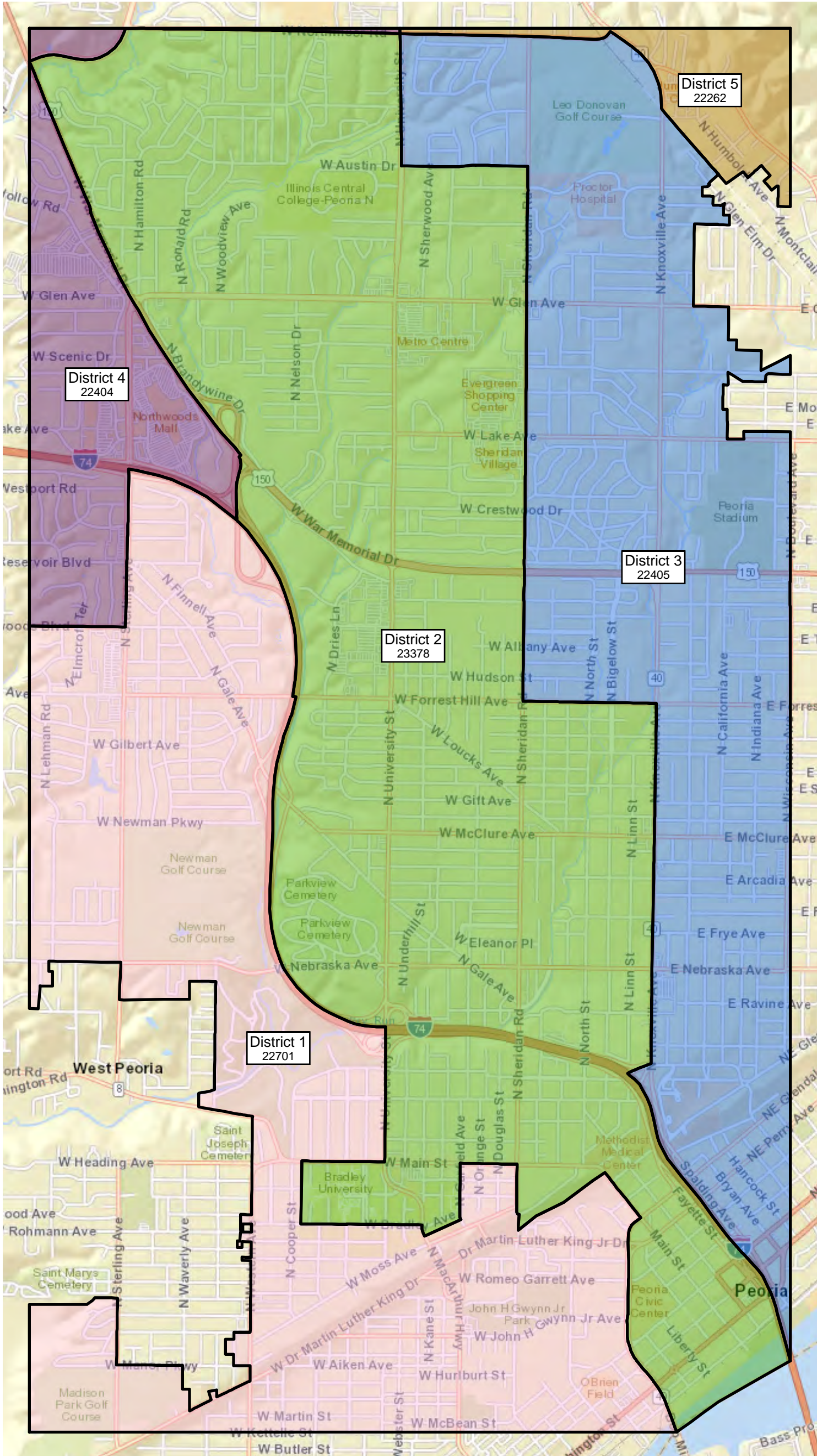
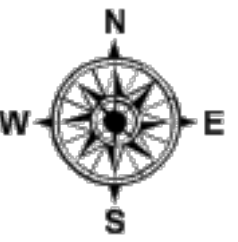
Version 2.1 - Modified V2 with Thoroughfares

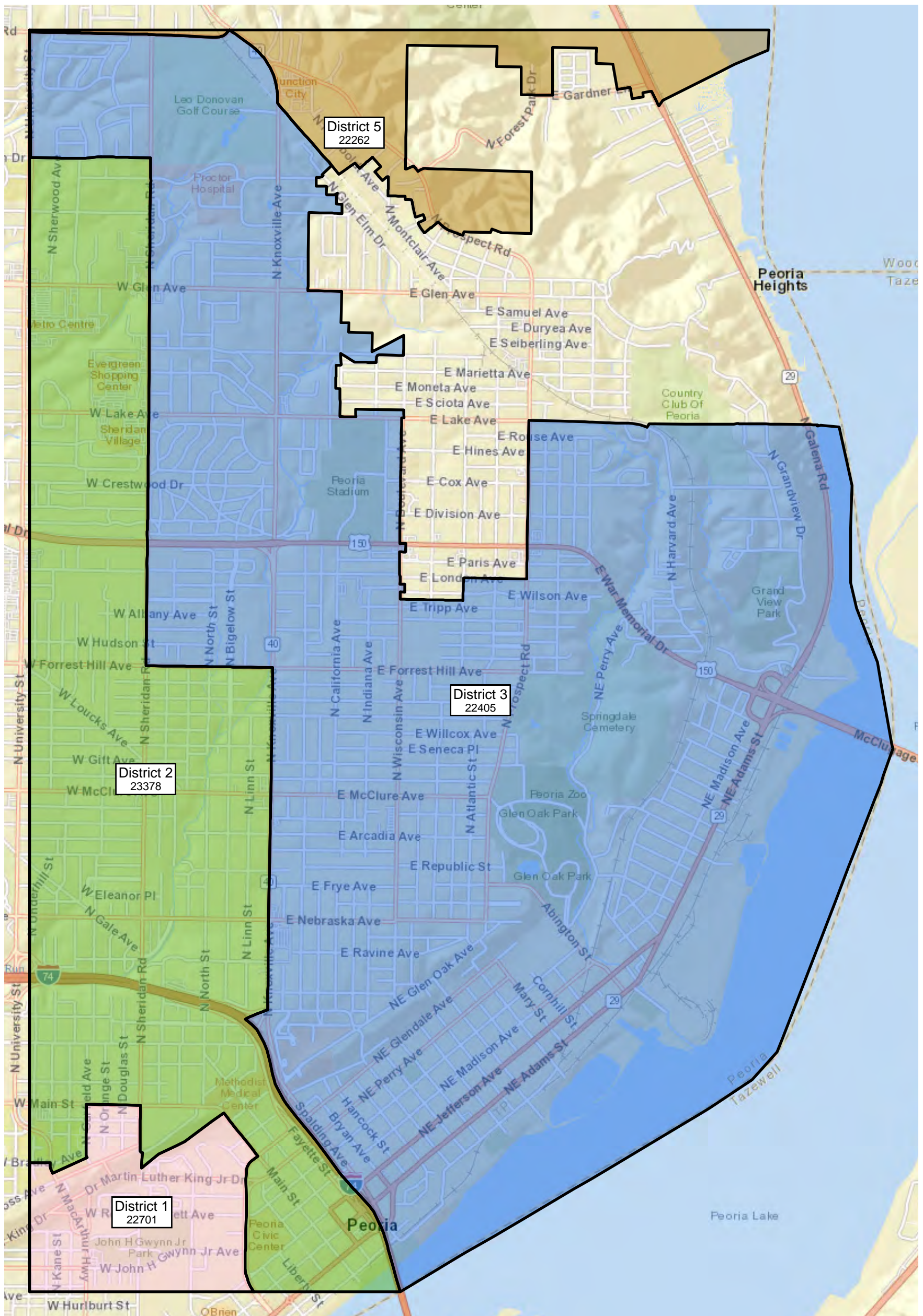
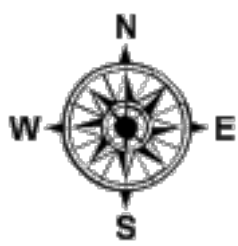


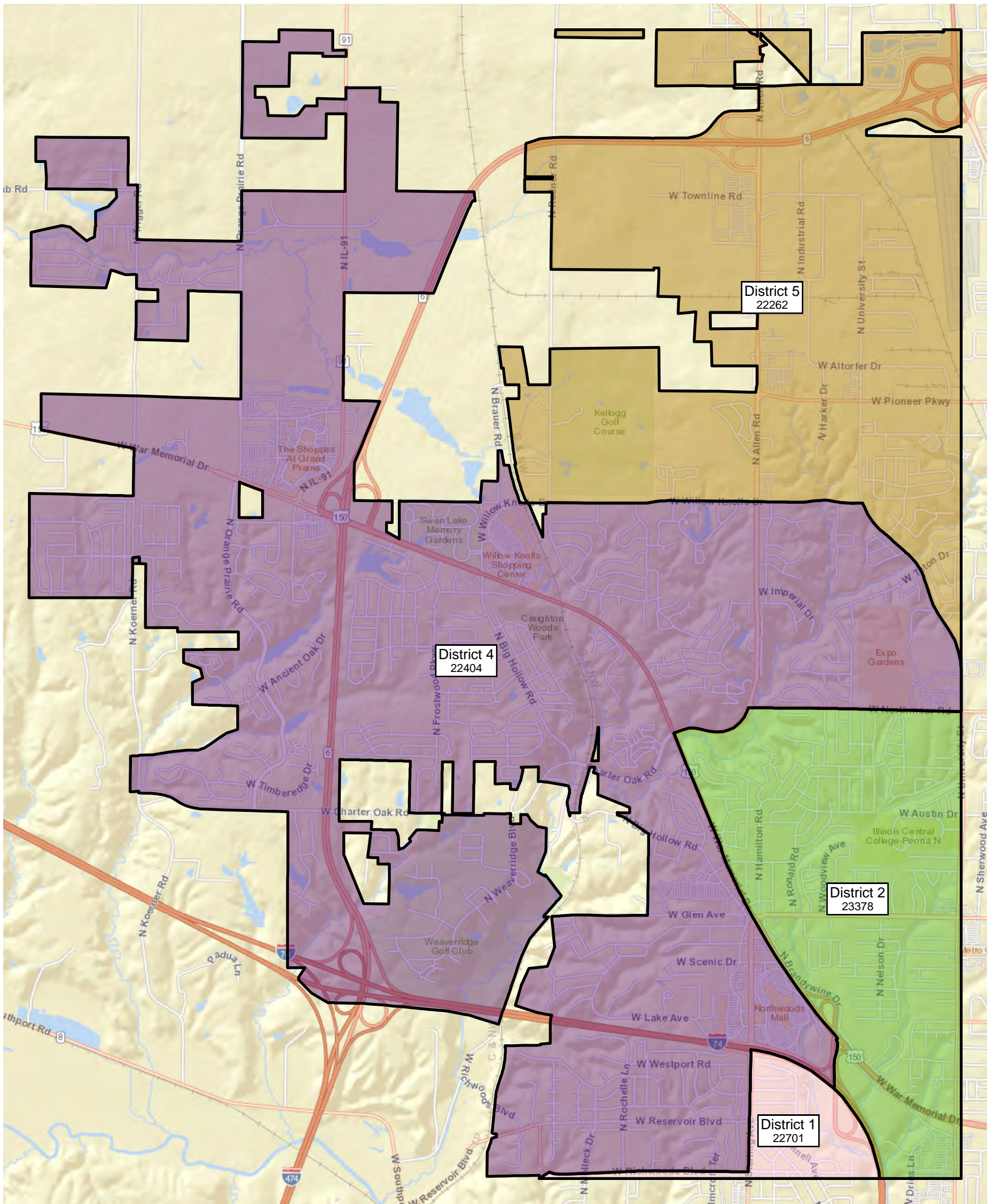
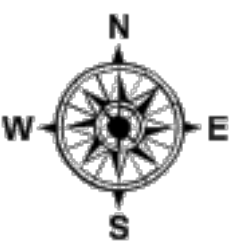


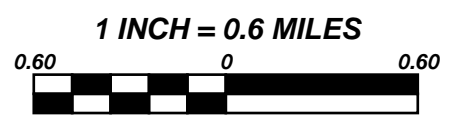
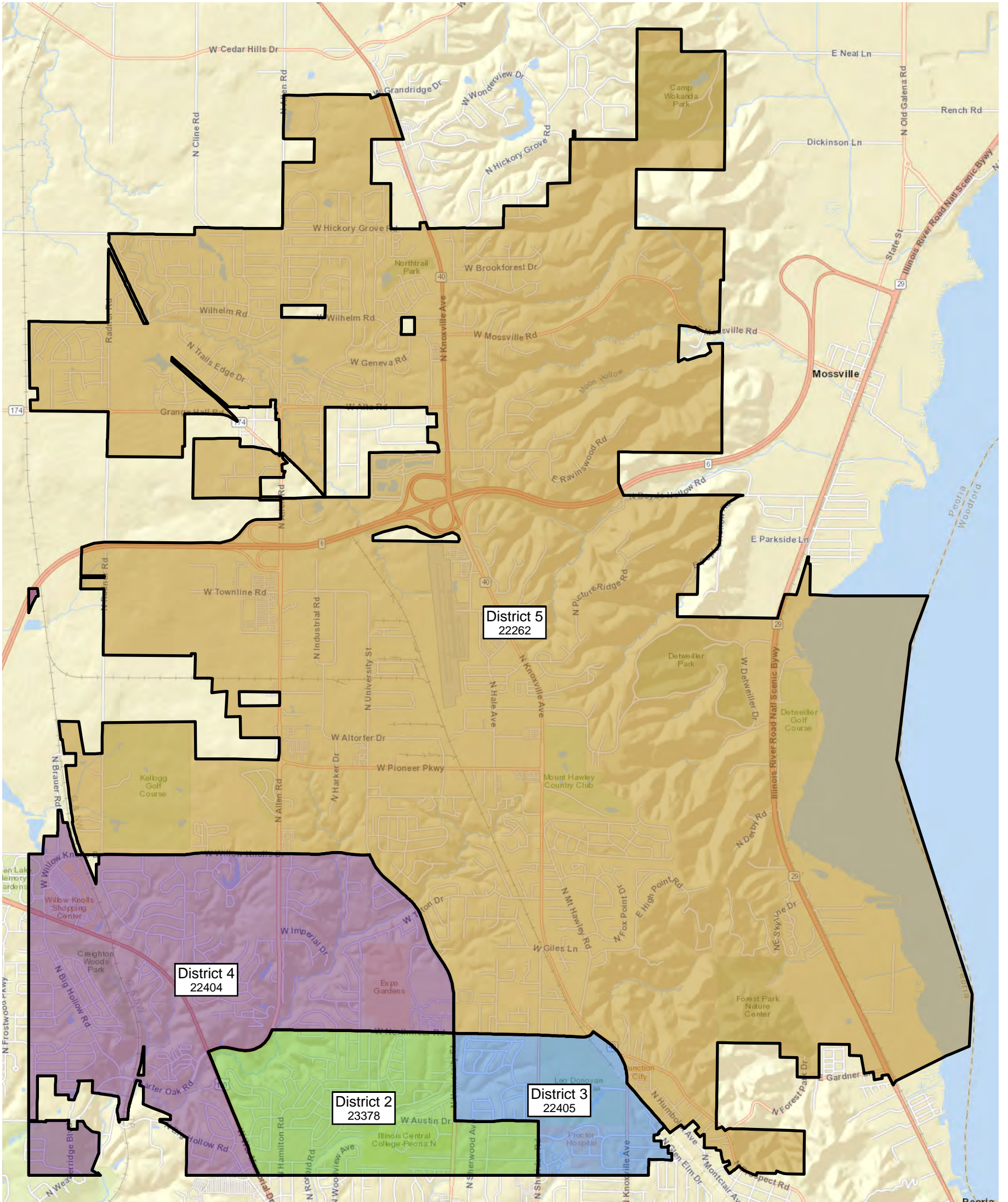
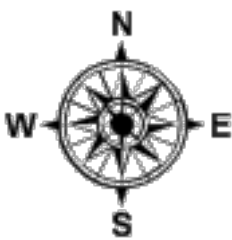
1 INCH = 0.4 MILES











All Districts Summary Report

District No.	D1
Total Population	22,701
Total Population 18+	16,559
Deviation	71
Dev. %	0.314

	Total Hispanic	Total Non-Hispanic	Total	Hispanic	Non-Hispanic	Non-Hispanic white	Non-Hispanic black	Non-Hispanic American Indian/Alaskan Native	Non-Hispanic Asian	Non-Hispanic Hawaiian or Other Pacific Islander
Total	1,756	20,945	22,701	1,756	20,945	7,637	12,366	208	312	22
Total%	7.74	92.26	100.00	7.74	92.26	33.64	54.47	0.92	1.37	0.10
Total18+	1,143	15,416	22,701	1,143	15,416	6,626	8,098	172	242	17
Total18+ ^c	6.90	93.10	137.09	6.90	93.10	40.01	48.90	1.04	1.46	0.10

	Total Hispanic	Total Non-Hispanic	Non-Hispanic some other race	Non-Hispanic two or more minority race
Total	1,756	20,945	226	174
Total%	7.74	92.26	1.00	0.77
Total18+	1,143	15,416	145	116
Total18+ ^c	6.90	93.10	0.88	0.70

District No.	D2
Total Population	23,378
Total Population 18+	18,420
Deviation	748
Dev. %	3.305

	Total Hispanic	Total Non-Hispanic	Total	Hispanic	Non-Hispanic	Non-Hispanic white	Non-Hispanic black	Non-Hispanic American Indian/Alaskan Native	Non-Hispanic Asian	Non-Hispanic Hawaiian or Other Pacific Islander
Total	1,827	21,551	23,378	1,827	21,551	12,462	7,614	280	758	12
Total%	7.82	92.18	100.00	7.82	92.18	53.31	32.57	1.20	3.24	0.05
Total18+	1,273	17,147	23,378	1,273	17,147	10,804	5,161	238	641	10
Total18+%	6.91	93.09	126.92	6.91	93.09	58.65	28.02	1.29	3.48	0.05

	Total Hispanic	Total Non-Hispanic	Non-Hispanic some other race	Non-Hispanic two or more minority race
Total	1,827	21,551	230	195
Total%	7.82	92.18	0.98	0.83
Total18+	1,273	17,147	174	119
Total18+%	6.91	93.09	0.94	0.65

District No.	D3
Total Population	22,405
Total Population 18+	16,690
Deviation	-225
Dev. %	-0.994

	Total Hispanic	Total Non-Hispanic	Total	Hispanic	Non-Hispanic	Non-Hispanic white	Non-Hispanic black	Non-Hispanic American Indian/Alaskan Native	Non-Hispanic Asian	Non-Hispanic Hawaiian or Other Pacific Islander
Total	2,533	19,872	22,405	2,533	19,872	10,896	7,882	242	434	13
Total%	11.31	88.69	100.00	11.31	88.69	48.63	35.18	1.08	1.94	0.06
Total18+	1,614	15,076	22,405	1,614	15,076	9,361	4,899	204	351	10
Total18+%	9.67	90.33	134.24	9.67	90.33	56.09	29.35	1.22	2.10	0.06

	Total Hispanic	Total Non-Hispanic	Non-Hispanic some other race	Non-Hispanic two or more minority race
Total	2,533	19,872	221	184
Total%	11.31	88.69	0.99	0.82
Total18+	1,614	15,076	156	95
Total18+%	9.67	90.33	0.93	0.57

District No.	D4
---------------------	-----------

Total Population 22,404

Total Population 18+	17,775
----------------------	--------

Deviation	-226
-----------	------

Dev. %	-0.999
--------	--------

	Total Hispanic	Total Non-Hispanic	Total	Hispanic	Non-Hispanic	Non-Hispanic white	Non-Hispanic black	Non-Hispanic American Indian/Alaskan Native	Non-Hispanic Asian	Non-Hispanic Hawaiian or Other Pacific Islander
Total	972	21,432	22,404	972	21,432	14,320	4,350	233	2,177	14
Total%	4.34	95.66	100.00	4.34	95.66	63.92	19.42	1.04	9.72	0.06
Total18+	622	17,153	22,404	622	17,153	12,060	3,057	176	1,629	10
Total18+%	3.50	96.50	126.04	3.50	96.50	67.85	17.20	0.99	9.16	0.06

	Total Hispanic	Total Non-Hispanic	Non-Hispanic some other race	Non-Hispanic two or more minority race
Total	972	21,432	230	108
Total%	4.34	95.66	1.03	0.48
Total18+	622	17,153	159	62
Total18+%	3.50	96.50	0.89	0.35

District No.	D5
---------------------	-----------

Total Population 22,262

Total Population 18+	16,514
----------------------	--------

Deviation	-368
-----------	------

Dev. %	-1.626
--------	--------

	Total Hispanic	Total Non-Hispanic	Total	Hispanic	Non-Hispanic	Non-Hispanic white	Non-Hispanic black	Non-Hispanic American Indian/Alaskan Native	Non-Hispanic Asian	Non-Hispanic Hawaiian or Other Pacific Islander
Total	811	21,451	22,262	811	21,451	15,049	1,751	188	4,126	16
Total%	3.64	96.36	100.00	3.64	96.36	67.60	7.87	0.84	18.53	0.07
Total18+	501	16,013	22,262	501	16,013	11,786	1,152	137	2,717	7
Total18+ ^c	3.03	96.97	134.81	3.03	96.97	71.37	6.98	0.83	16.45	0.04

	Total Hispanic	Total Non-Hispanic	Non-Hispanic some other race	Non-Hispanic two or more minority race
Total	811	21,451	251	70
Total%	3.64	96.36	1.13	0.31
Total18+	501	16,013	176	38
Total18+ ^c	3.03	96.97	1.07	0.23