

STATE OF ILLINOIS
DEPARTMENT OF TRANSPORTATION

F.A. RTE.	SECTION	COUNTY	TOTAL SHEETS	SHEET NO.
VAR.	D4 SIGNAL INSTALLATION 2021	VARIOUS	21	1
		ILLINOIS	CONTRACT NO. 68G06	

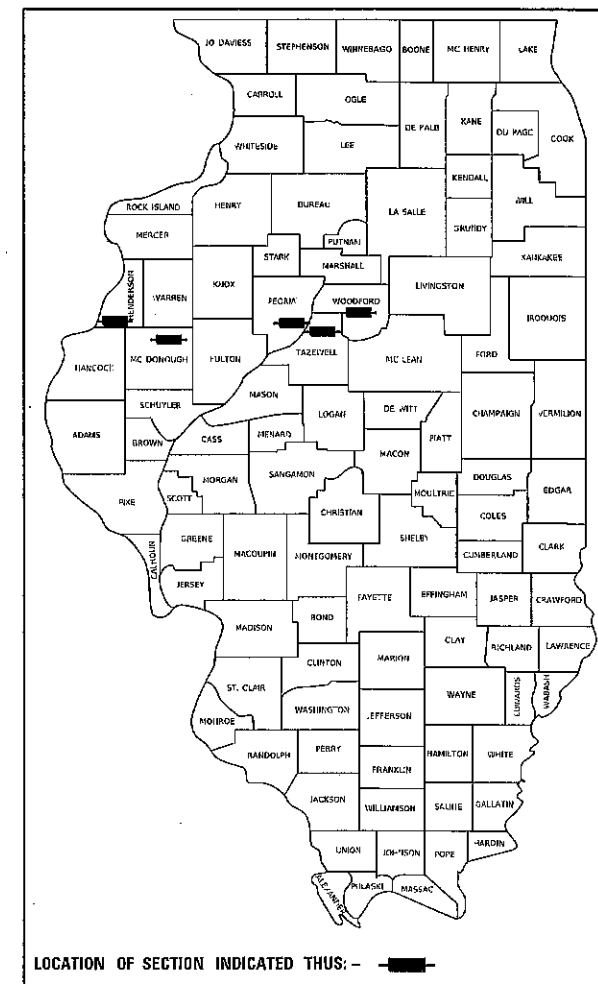
D-94-008-21

INDEX OF SHEETS:
SEE SHEET 2 FOR INDEX OF SHEETS

**PROPOSED
HIGHWAY PLANS**

D4 SIGNAL INSTALLATION 2021
PROJECT NUMBER: HSIP-CNQN(639)
VARIOUS ROUTES
VARIOUS COUNTIES

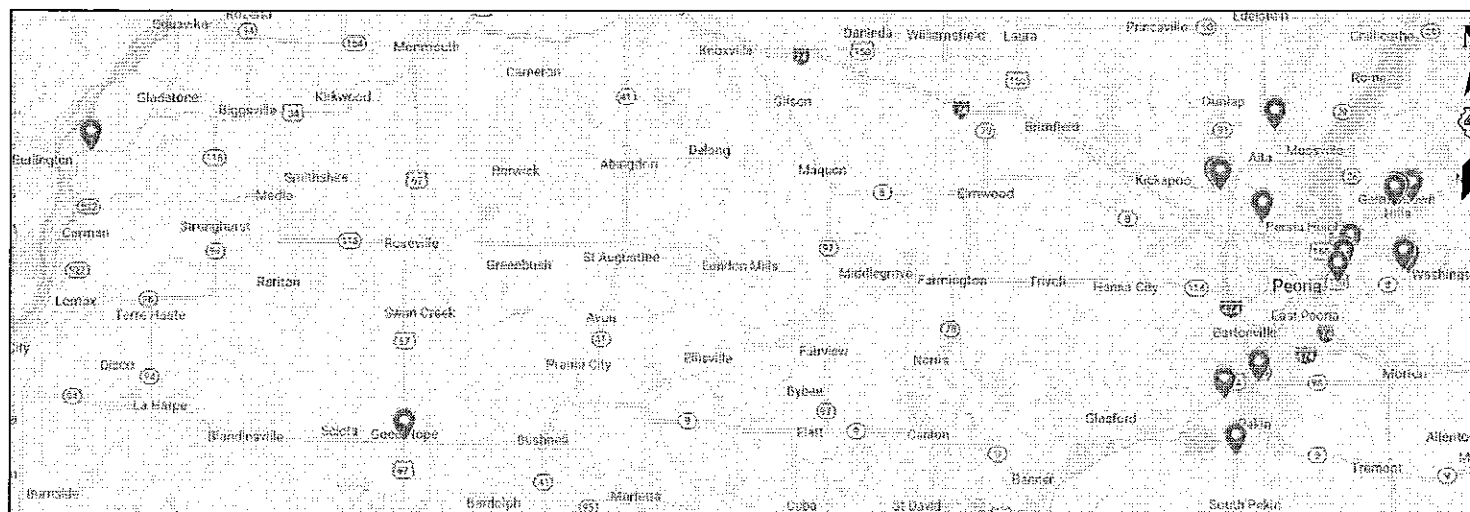
C-94-011-21



LOCATION OF SECTION INDICATED THIS: - [shaded area]

HIGHWAY STANDARDS:
SEE SHEET 2 FOR A LIST OF
APPLICABLE HIGHWAY STANDARDS

PROJECT DESCRIPTION:
INSTALLATION OF DILEMMA ZONE DETECTION
AND LED LIGHTING AT VARIOUS SIGNALIZED
INTERSECTIONS IN DISTRICT 4.



J.U.L.I.E.
JOINT UTILITY LOCATION INFORMATION FOR EXCAVATORS
1-800-892-0123
OR 811

PROJECT ENGINEER : ERIC HOWALD (309) 671-4481
PROJECT MANAGER : BEN TELLEFSON (309) 671-4477
CATALOG NO. 036122-00D
CONTRACT NO. 68G06

STATE OF ILLINOIS
DEPARTMENT OF TRANSPORTATION

SUBMITTED _____ 20 _____

_____ 20 _____
REGIONAL ENGINEER

_____ 20 _____
ENGINEER OF DESIGN AND ENVIRONMENT

_____ 20 _____
DIRECTOR OF HIGHWAYS PROJECT IMPLEMENTATION

PRINTED BY THE AUTHORITY
OF THE STATE OF ILLINOIS

NO COMMITMENTS HAVE BEEN MADE IN CONJUNCTION WITH THIS PROJECT.

INDEX OF SHEETS	
PAGE	DESCRIPTION
1	COVER SHEET
2	COMMITMENTS, INDEX OF SHEETS, HIGHWAY STANDARDS
3	CONSTRUCTION NOTES
4	SUMMARY OF QUANTITIES
5	SCHEDULE OF QUANTITIES
6	PROPOSED LED LUMINAIRE INSTALLATION DETAILS
7	EXISTING TRAFFIC SIGNAL PLANS: IL 116 - GERMANTOWN HILLS
8	PROPOSED TRAFFIC SIGNAL PLANS: IL 116 - GERMANTOWN HILLS
9	EXISTING TRAFFIC SIGNAL PLANS: IL 116 - EAST PEORIA
10	PROPOSED TRAFFIC SIGNAL PLANS: IL 116 - EAST PEORIA
11	EXISTING TRAFFIC SIGNAL PLANS: INTERSECTIONS ALONG US 24 & BUS 24 - WASHINGTON
12	PROPOSED TRAFFIC SIGNAL PLANS: INTERSECTIONS ALONG US 24 & BUS 24 - WASHINGTON
13	EXISTING TRAFFIC SIGNAL PLANS: IL 29 - PEKIN
14	PROPOSED TRAFFIC SIGNAL PLANS: IL 29 - PEKIN
15	EXISTING TRAFFIC SIGNAL PLANS: INTERSECTIONS ALONG US 150 & IL 40 - PEORIA
16	PROPOSED TRAFFIC SIGNAL PLANS: INTERSECTIONS ALONG US 150 & IL 40 - PEORIA
17	EXISTING TRAFFIC SIGNAL PLANS: US 24 & IL 9, US 34 & CARMAN, US 67 & IL 9 - VARIOUS COUNTIES
18	PROPOSED TRAFFIC SIGNAL PLANS: US 24 & IL 9, US 34 & CARMAN, US 67 & IL 9 - VARIOUS COUNTIES
19	US 150 EB FLASHER INSTALLATION
20	DILEMMA ZONE DETECTION SYSTEM INSTALLATION DETAIL
21	PROPOSED LED LUMINAIRE PERFORMANCE TABLE

HIGHWAY STANDARDS	
000001-08	STANDARD SYMBOLS, ABBREVIATIONS AND PATTERNS
001006	DECIMAL OF AN INCH AND OF A FOOT
701201-05	LANE CLOSURE, 2L, 2W, DAY ONLY
701422-10	LANE CLOSURE, MULTILANE, FOR SPEEDS \geq 45 MPH TO 55 MPH
701426-09	LANE CLOSURE, MULTILANE, INTERMITTENT OR MOVING OPER., FOR SPEEDS \geq 45 MPH
701427-05	LANE CLOSURE, MULTILANE, INTERMITTENT OR MOVING OPER., FOR SPEEDS \leq 40 MPH
701701-10	URBAN LANE CLOSURE, MULTILANE INTERSECTION
701901-08	TRAFFIC CONTROL DEVICES
821101-02	LUMINAIRE WIRING IN POLE
857001-01	STANDARD PHASE DESIGNATION DIAGRAMS AND PHASE SEQUENCES
873001-02	TRAFFIC SIGNAL GROUNDING & BONDING
880006-01	TRAFFIC SIGNAL MOUNTING DETAILS
886001-01	DETECTOR LOOP INSTALLATIONS
886006-01	TYPICAL LAYOUTS FOR DETECTION LOOPS

MODEL: Default
 FILE NAME: C:\Documents\CENT\Transfer - Bureau\88606 - Final Plans\88606 - Dilemma Zone Project final.dwg

USER NAME = hansonj	DESIGNED -	REVISED -
	DRAWN -	REVISED -
PLOT SCALE = 1/4" = 1' / in.	CHECKED -	REVISED -
PLOT DATE = 10/16/2020	DATE -	REVISED -

STATE OF ILLINOIS
DEPARTMENT OF TRANSPORTATION

COMMITMENTS, INDEX OF SHEETS, AND HIGHWAY STANDARDS

SCALE: SHEET OF SHEETS STA. TO STA.

F.A. RTE.	SECTION	COUNTY	TOTAL SHEETS	SHEET NO.
VAR.	D4 SIGNAL INSTALLATION 2021	VARIOUS	21	2
CONTRACT NO. 68G06			ILLINOIS FED. AID PROJECT	

CONSTRUCTION NOTES

1. THE LOCATION OF ALL UTILITIES AND PRIVATELY OWNED FACILITIES SHALL BE FIELD VERIFIED BY THE CONTRACTOR PRIOR TO THE INSTALLATION OF ANY COMPONENTS.
2. THE CONTRACTOR SHALL BE RESPONSIBLE FOR LOCATING EXISTING IDOT ELECTRICAL FACILITIES AT HIS/HER OWN EXPENSE IF REQUIRED. THE CONTRACTOR SHALL ALSO BE LIABLE FOR ANY DAMAGE TO IDOT FACILITIES RESULTING FROM INACCURATE LOCATING.
3. ELECTRICAL WORK SHALL CONFORM WITH NATIONAL, STATE, AND LOCAL CODES.
4. THE CONTRACTOR SHALL PROVIDE ELECTRICAL CABLE SLACK IN ACCORDANCE WITH ARTICLE 873.03.
5. THE CONTRACTOR SHALL VERIFY FIELD CONDITIONS PRIOR TO BIDDING. THERE WILL BE NO ADDITIONAL COMPENSATION PAID FOR CLAIMS THAT ARISE FROM A FAILURE TO FULLY INVESTIGATE EXISTING FIELD CONDITIONS.
6. ALL SURPLUS MATERIALS SHALL BE DISPOSED OF IN ACCORDANCE WITH ARTICLE 202.03 OF THE STANDARD SPECIFICATIONS.
7. THE CONTRACTOR IS RESPONSIBLE FOR THE COST OF UNCOVERING OR HAND DIGGING AROUND UTILITIES AS NECESSARY. THIS COST OF THIS WORK SHALL BE INCLUDED IN THE UNIT PRICES FOR THE CONDUITS.
8. ALL TRAFFIC SIGNAL HEAD BRACKETS ARE TO BE GALVANIZED STEEL WITH A NATURAL FINISH.
9. ALL TRAFFIC SIGNAL SECTIONS SHALL HAVE 12" SINGLE LED LENSES.
10. THE RED SECTIONS OF THE SIGNAL HEADS SHARING THE SAME MAST ARM SHALL BE LEVEL WITH ONE ANOTHER AND MAINTAIN A 16 FT. MINIMUM CLEARANCE FROM THE HIGHEST POINT OF THE ROADWAY TO BOTTOM OF THE SIGNAL BACKPLATE.
11. ALL DETECTOR LOOPS SHALL UTILIZE A SEPARATE PAIR OF TWISTED/SHIELDED LEAD-IN CABLE.
12. ALL DETECTOR LOOPS SHALL BE INSTALLED IN THE CENTER OF THEIR RESPECTIVE TRAVEL LANES. THE ENGINEER OF TRAFFIC SHALL BE NOTIFIED FOR VERIFICATION OF DETECTOR PLACEMENT BEFORE INSTALLATION.
13. THE PROPOSED DETECTOR LOOPS SHALL BE CUT IN THE EXISTING PAVEMENT.
14. THE CONTRACTOR SHALL REMOVE THE EXISTING SIGNAL HEADS AND DISPOSE OF THEM OFF THE JOBSITE. THIS WORK WILL NOT BE PAID FOR SEPARATELY, BUT SHALL BE INCLUDED IN THE BID PRICE FOR THE PROPOSED SIGNAL HEADS.
15. THE CONTRACTOR SHALL RE-USE THE EXISTING TRAFFIC SIGNAL CABLING. THE COST OF ANY ADDITIONAL JUMPER CABLING REQUIRED TO POWER THE ADDITIONAL RED SIGNAL HEADS SHALL BE INCLUDED IN THE BID PRICE FOR THE SIGNAL HEADS.
16. THE DILEMMA ZONE DETECTORS SHALL BE INSTALLED ACCORDING TO MANUFACTURER'S RECOMMENDATIONS.
17. THE VEHICLE VIDEO DETECTION SYSTEM SHALL BE INSTALLED ACCORDING TO MANUFACTURER'S RECOMMENDATIONS.
18. THE CONTRACTOR SHALL FURNISH AND INSTALL THE DILEMMA ZONE DETECTORS INCLUDING BRACKETING, HARDWARE, WIRING, TRAFFIC SIGNAL MODIFICATIONS, EQUIPMENT, ETC. THIS WORK WILL NOT BE PAID FOR SEPARATELY, BUT SHALL BE INCLUDED IN THE BID PRICE FOR THE DILEMMA ZONE DETECTION SYSTEM.
19. REMOVAL OF EXISTING ITEMS WILL NOT BE PAID FOR SEPARATELY, BUT SHALL BE INCLUDED IN THE BID PRICES FOR THE PROPOSED ITEMS.
20. THE TRAFFIC SIGNAL POST SHALL BE GROUNDED IN ACCORDANCE WITH NEC REQUIREMENTS. THIS WORK SHALL BE INCLUDED IN THE BID PRICE OF THE TRAFFIC SIGNAL POST.

MODEL: D:\pilot\DOT\JAMES\Government\GANT\gnt\gnt - Final Plans\68G05 - Final Plans\68G05 Dilemma Zone Project.rvt

USER NAME = hansonj	DESIGNED -	REVISED -
PLOT SCALE = 1/4" = 1' / in.	DRAWN -	REVISED -
PLOT DATE = 10/16/2020	CHECKED -	REVISED -
	DATE -	REVISED -

**STATE OF ILLINOIS
DEPARTMENT OF TRANSPORTATION**

CONSTRUCTION NOTES

SCALE: SHEET OF SHEETS STA. TO STA.

F.A. RTE.	SECTION	COUNTY	TOTAL SHEETS	SHEET NO.
VAR.	D4 SIGNAL INSTALLATION 2021	VARIOUS	21	3
			CONTRACT NO. 68G05	
ILLINOIS FED. AID PROJECT				

SUMMARY OF QUANTITIES															
CODE NO.	ITEM DESCRIPTION	UNIT	TOTAL QUANTITY	WOODFORD CTY.	TAZEWELL CTY.				PEORIA CTY.			HENDERSON CTY.	MCDONOUGH CTY.		
				CONST. CODE	CONST. CODE	CONST. CODE	CONST. CODE	CONST. CODE	CONST. CODE	CONST. CODE	CONST. CODE	CONST. CODE	CONST. CODE	CONST. CODE	
				0021	0021	0021	0021	0021	0021	0021	0021	0021	0021	0021	
				90% FEDERAL	90% FEDERAL	90% FEDERAL	90% FEDERAL	90% FEDERAL	90% FEDERAL	90% FEDERAL	90% FEDERAL	90% FEDERAL	90% FEDERAL	90% FEDERAL	
				5% STATE	10% STATE	6.7% STATE	5% STATE	6.7% STATE	0% STATE	5% STATE	10% STATE	5% STATE	0% STATE	10% STATE	
				5% CITY	0% CITY	3.3% CITY	5% CITY	3.3% CITY	10% CITY	5% CITY	0% CITY	5% CITY	10% CITY	0% CITY	
GERMANTOWN HILLS	TAZEWELL CTY.	EAST PEORIA	EAST PEORIA	WASHINGTON	WASHINGTON	PEKIN	PEORIA CTY.	PEORIA	PEORIA	HENDERSON CTY.	MCDONOUGH CTY.				
3 INTERSECTIONS	3 INTERSECTIONS	2 INTERSECTIONS	1 INTERSECTION	1 INTERSECTION	1 INTERSECTION	1 INTERSECTION	3 INTERSECTIONS	1 INTERSECTION	2 INTERSECTIONS	1 INTERSECTION	1 INTERSECTION				
URBAN	URBAN	URBAN	URBAN	URBAN	URBAN	URBAN	URBAN	URBAN	URBAN	URBAN	URBAN	URBAN			
67100100	MOBILIZATION	L SUM	1.0	0.15	0.15	0.10	0.05	0.05	0.05	0.05	0.15	0.05	0.10	0.05	0.05
72000200	SIGN PANEL - TYPE 2	SQ FT	16.0								16.0				
81028350	UNDERGROUND CONDUIT, PVC, 2" DIA.	FOOT	505.0								505.0				
81500120	GULFBOX JUNCTION, COMPOSITE CONCRETE	EACH	1.0								1.0				
82110007	LUMINAIRE, LED, ROADWAY, OUTPUT DESIGNATION G	EACH	36.0	12.0	3.0		4.0	3.0	4.0	2.0				4.0	4.0
87301245	ELECTRIC CABLE IN CONDUIT, SIGNAL NO. 14 5C	FOOT	1930.0								1930.0				
87301900	ELECTRIC CABLE IN CONDUIT, EQUIPMENT GROUNDING CONDUCTOR, NO. 6 1C	FOOT	1684.5								1684.5				
87502520	TRAFFIC SIGNAL POST, GALVANIZED STEEL 18 FT.	EACH	1.0								1.0				
87900200	DRILL EXISTING HANDHOLE	EACH	1.0								1.0				
88040020	SIGNAL HEAD, POLYCARBONATE, LED 1-FACE, 1-SECTION, BRACKET MOUNTED	EACH	2.0								2.0				
88200100	TRAFFIC SIGNAL BACKPLATE	EACH	2.0								2.0				
88200510	TRAFFIC SIGNAL BACKPLATE, RETROREFLECTIVE	EACH	63.0	9.0	7.0		4.0	3.0	8.0	8.0		4.0	13.0	7.0	
X1400087	SIGNAL HEAD, POLYCARBONATE, LED, 1-FACE, 3-SECTION, MAST ARM MOUNTED (SPECIAL)	EACH	2.0	2.0											
X1400434	DILEMMA ZONE DETECTION SYSTEM	EACH	35.0	6.0	3.0	3.0	2.0	2.0	2.0	2.0	4.0	2.0	3.0	2.0	4.0
X7010216	TRAFFIC CONTROL AND PROTECTION, (SPECIAL)	L SUM	1.0	0.15	0.15	0.10	0.05	0.05	0.05	0.05	0.15	0.05	0.10	0.05	0.05
X8140102	GROUND EXISTING HANDHOLE	EACH	3.0								3.0				
X8210402	LUMINAIRE MOUNTING BRACKET - SPECIAL	EACH	13.0	6.0	2.0		3.0	2.0							
X8570215	FULL-ACTUATED CONTROLLER IN EXISTING CABINET	EACH	10.0		2.0	2.0	1.0			1.0	1.0	1.0	1.0	1.0	
X8860400	DETECTOR LOOP, SPECIAL	FOOT	164.0		164.0										
X8950114	MODIFY EXISTING CONTROLLER AND CABINET	EACH	1.0								1.0				
Z0033072	VIDEO VEHICLE DETECTION SYSTEM	EACH	1.0										1.0		

MODEL: Default
 FILE NAME: C:\comm\GENTransfer - Bureau\88606 - Final Plans\88606 Minima Zone Project Final.dgn

USER NAME = hansonj PLOT SCALE = 1/4" = 174.3861' / in. PLOT DATE = 10/16/2020	DESIGNED - DRAWN - CHECKED - DATE -	REVISED - REVISED - REVISED - REVISED -	STATE OF ILLINOIS DEPARTMENT OF TRANSPORTATION	SUMMARY OF QUANTITIES	F.A. RTE. VAR. SECTION D4 SIGNAL INSTALLATION 2021 COUNTY VARIOUS TOTAL SHEETS 21 SHEET NO. 4	CONTRACT NO. 68G06 ILLINOIS FED. AID PROJECT
SCALE: SHEET OF SHEETS STA. TO STA.						

SCHEDULE OF QUANTITIES

ITEM DESCRIPTION	UNIT	TOTAL QTY.	WOODFORD COUNTY			TAZEWELL COUNTY							PEORIA COUNTY						HENDERSON COUNTY	MCDONOUGH COUNTY	
			GERMANTOWN HILLS			EAST PEORIA				WASHINGTON			NORTH PEKIN	PEKIN	PEORIA COUNTY		PEORIA		HENDERSON CTY.	MCDONOUGH CTY.	
			IL 116 & WOODLAND KNOLLS RD./TEN MILE CREEK RD.	IL 116 & CR 400 E/FANDEL RD.	IL 116 & ARBOR VITAE DR./SCHMITT LN.	IL 116 & ACCESS RD. 8	IL 116 & CENTENNIAL DR.	IL 116 & MARINA LN.	IL 116 & MARINERS WAY	US 24 (BOYD PKWY.) & CUMMINGS LN.	BUS 24/ IL 8 (MCCLUGAGE RD.) & BUS 24/ IL 8 (WASHINGTON RD.)	BUS 24/ IL 8 (MCCLUGAGE RD.) & FREEDOM PKWY./CENTENNIAL DR.	IL 29 (RADIO CITY DR.) & IL 98 (EDGEWATER DR.)	IL 29 & MANITO RD./POWERTON RD.	US 150 (WAR MEMORIAL DR.) & KOERNER RD./TRIGGER RD.	US 24 & IL 9	US 150 EB FLASHER	IL 40 (KNOXVILLE AVE.) & WOODSIDE DR.	US 150 (WAR MEMORIAL DR.) & ACADEMIC DR.	US 150 (WAR MEMORIAL DR.) & GLEN HOLLOW	US 34 & CARMAN RD.
FEDERAL/STATE/CITY COST %			90/5/5	90/5/5	90/5/5	90/10/0	90/6.7/3.3	90/6.7/3.3	90/5/5	90/10/0	90/6.7/3.3	90/0/10	90/10/0	90/5/5	90/10/0	90/10/0	90/5/5	90/0/10	90/0/10	90/10/0	90/10/0
SIGN PANEL - TYPE 2	SQ FT	16.0														16.0					
UNDERGROUND CONDUIT, PVC, 2" DIA.	FOOT	505.0														505.0					
GULFBOX JUNCTION, COMPOSITE CONCRETE	EACH	1.0														1.0					
LUMINAIRE, LED, ROADWAY, OUTPUT DESIGNATION G	EACH	36.0	4.0	4.0	4.0	3.0			4.0		3.0	4.0		2.0						4.0	4.0
ELECTRIC CABLE IN CONDUIT, SIGNAL NO. 14 5C	FOOT	1930.0														1930.0					
ELECTRIC CABLE IN CONDUIT, EQUIPMENT GROUNDING CONDUCTOR, NO. 6 1C	FOOT	1684.5														1684.5					
TRAFFIC SIGNAL POST, GALVANIZED STEEL, 18 FT.	EACH	1.0														1.0					
DRILL EXISTING HANDHOLE	EACH	1.0														1.0					
SIGNAL HEAD, POLYCARBONATE, LED 1-FACE, 1-SECTION, BRACKET MOUNTED	EACH	2.0														2.0					
TRAFFIC SIGNAL BACKPLATE	EACH	2.0														2.0					
TRAFFIC SIGNAL BACKPLATE, RETROREFLECTIVE	EACH	63.0	3.0	2.0	4.0	5.0			4.0		3.0	8.0	2.0	8.0			4.0	7.0	6.0	7.0	
SIGNAL HEAD, POLYCARBONATE, LED, 1-FACE, 3-SECTION, MAST ARM MOUNTED (SPECIAL)	EACH	2.0			2.0																
DILEMMA ZONE DETECTION SYSTEM	EACH	35.0	2.0	2.0	2.0	2.0	1.0	2.0	2.0		2.0	2.0	1.0	2.0	2.0	2.0	2.0	2.0	1.0	2.0	4.0
GROUND EXISTING HANDHOLE	EACH	3.0																			3.0
LUMINAIRE MOUNTING BRACKET - SPECIAL	EACH	13.0	2.0	2.0	2.0	2.0			3.0		2.0										
FULL-ACTUATED CONTROLLER IN EXISTING CABINET	EACH	10.0				1.0	1.0	1.0	1.0				1.0	1.0	1.0		1.0	1.0		1.0	
DETECTOR LOOP, SPECIAL	FOOT	164.0									164.0										
MODIFY EXISTING CONTROLLER AND CABINET	EACH	1.0														1.0					
VIDEO VEHICLE DETECTION SYSTEM	EACH	1.0																	1.0		

MODEL: Default
FILE NAME: C:\Common\GENTransfer - Bureau\86G06 - Final Plans\86G06 Dilemma Zone Project\Thou.dgn

USER NAME = hansonj	DESIGNED -	REVISED -
PLOT SCALE = 1/4" = 1' / in.	DRAWN -	REVISED -
PLOT DATE = 10-16-2020	CHECKED -	REVISED -
	DATE -	REVISED -

**STATE OF ILLINOIS
DEPARTMENT OF TRANSPORTATION**

SCHEDULE OF QUANTITIES	
SCALE:	SHEET OF SHEETS STA. TO STA.

F.A. RTE.	SECTION	COUNTY	TOTAL SHEETS	SHEET NO.
VAR.	D4 SIGNAL INSTALLATION 2021	VARIOUS	21	5
CONTRACT NO. 68G06				
ILLINOIS FED. AID PROJECT				

PROPOSED LED LUMINAIRE INSTALLATION DETAILS

ROUTE	LOCATION	COUNTY	EX. LUMINAIRE VOLTAGE	EX. LUMINAIRE TYPE AND WATTAGE (LUMINAIRE QTY.)	PROP. LUMINAIRE TYPE	PROP. LUMINAIRE QTY.	LUMINAIRE MOUNTING BRACKET - SPECIAL QTY.	NOTES
IL 116	WOODLAND KNOLLS DR./ TEN MILE CREEK DR.	WOODFORD	240 V	HPS, 250W, TENON MOUNT (2)	LUMINAIRE, LED, ROADWAY, OUTPUT DESIGNATION G	4.0	2.0	FURNISH TWO 1 FT. TWIN 90 DEGREE ARMS AND INSTALL ON EX. MAST ARMS. FURNISH AND INSTALL ALL NEW LUMINAIRE WIRING, ARRESTORS, FUSES, AND FUSEHOLDERS.
IL 116	CR 400 E/ FANDEL RD.	WOODFORD	240 V	HPS, 250W, TENON MOUNT (2)	LUMINAIRE, LED, ROADWAY, OUTPUT DESIGNATION G	4.0	2.0	FURNISH TWO 1 FT. TWIN 90 DEGREE ARMS AND INSTALL ON EX. MAST ARMS. FURNISH AND INSTALL ALL NEW LUMINAIRE WIRING, ARRESTORS, FUSES, AND FUSEHOLDERS.
IL 116	SCHMITT LN./ ARBOR VITAE DR.	WOODFORD	240 V	HPS, 250W, TENON MOUNT (2)	LUMINAIRE, LED, ROADWAY, OUTPUT DESIGNATION G	4.0	2.0	FURNISH TWO 1 FT. TWIN 90 DEGREE ARMS AND INSTALL ON EX. MAST ARMS. FURNISH AND INSTALL ALL NEW LUMINAIRE WIRING, ARRESTORS, FUSES, AND FUSEHOLDERS.
IL 116	MARINERS WAY	TAZEWELL	240 V	HPS, 250W, TWIN-TENON MOUNT (2) TENON MOUNT (2)	LUMINAIRE, LED, ROADWAY, OUTPUT DESIGNATION G	4.0	3.0	FURNISH ONE 1 FT. TWIN 90 DEGREE ARM AND TWO 1 FT. ARM AND INSTALL ON EX. MAST ARMS. FURNISH AND INSTALL ALL NEW LUMINAIRE WIRING, ARRESTORS, FUSES, AND FUSEHOLDERS.
IL 116	ACCESS RD. 8	TAZEWELL	240 V	HPS, 250W, TWIN-TENON MOUNT (2) TENON MOUNT (1)	LUMINAIRE, LED, ROADWAY, OUTPUT DESIGNATION G	3.0	2.0	FURNISH ONE 1 FT. TWIN 90 DEGREE ARM AND ONE 1 FT. ARM AND INSTALL ON EX. MAST ARMS. FURNISH AND INSTALL ALL NEW LUMINAIRE WIRING, ARRESTORS, FUSES, AND FUSEHOLDERS.
BUS 24/ IL 8 (MCCLUGAGE RD.)	FREEDOM PKWY./ CENTENNIAL DR.	TAZEWELL	240 V	HPS, 250W, MAST ARM MOUNT (4)	LUMINAIRE, LED, ROADWAY, OUTPUT DESIGNATION G	4.0		INSTALL NEW LUMINAIRE WIRING, ARRESTORS, FUSES, AND FUSEHOLDERS.
BUS 24/ IL 8 (MCCLUGAGE RD.)	BUS 24/ IL 8 (WASHINGTON RD.)	TAZEWELL	240 V	HPS, 250W, TWIN-TENON MOUNT (2) TENON MOUNT (1)	LUMINAIRE, LED, ROADWAY, OUTPUT DESIGNATION G	3.0	2.0	FURNISH ONE 1 FT. TWIN 90 DEGREE ARM AND ONE 1 FT. ARM AND INSTALL ON EX. MAST ARMS. FURNISH AND INSTALL ALL NEW LUMINAIRE WIRING, ARRESTORS, FUSES, AND FUSEHOLDERS.
IL 29	MANITO RD./ POWERTON RD.	TAZEWELL	240 V	HPS, 250W, MAST ARM MOUNT (2)	LUMINAIRE, LED, ROADWAY, OUTPUT DESIGNATION G	2.0		INSTALL NEW LUMINAIRE WIRING, ARRESTORS, FUSES, AND FUSEHOLDERS.
US 34	CARMAN RD.	HENDERSON	240 V	HPS, 250W, MAST ARM MOUNT (4)	LUMINAIRE, LED, ROADWAY, OUTPUT DESIGNATION G	4.0		INSTALL NEW LUMINAIRE WIRING, ARRESTORS, FUSES, AND FUSEHOLDERS.
US 67	IL 9	MCDONOUGH	240 V	HPS, 250W, MAST ARM MOUNT (4)	LUMINAIRE, LED, ROADWAY, OUTPUT DESIGNATION G	4.0		INSTALL NEW LUMINAIRE WIRING, ARRESTORS, FUSES, AND FUSEHOLDERS.

MODEL Default FILE NAME CircumventingTransfer - Bureau\6806 - Final Plans\6806 Dilemma Zee Project Final.dgn

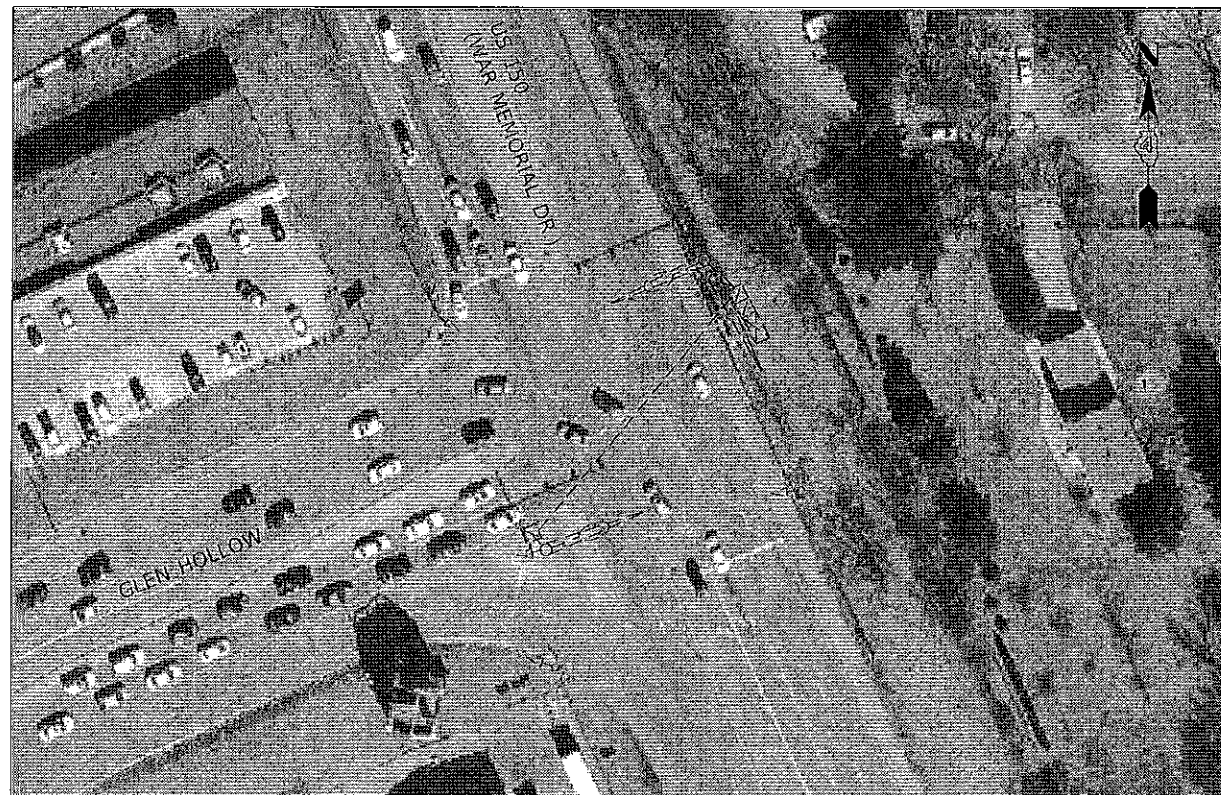
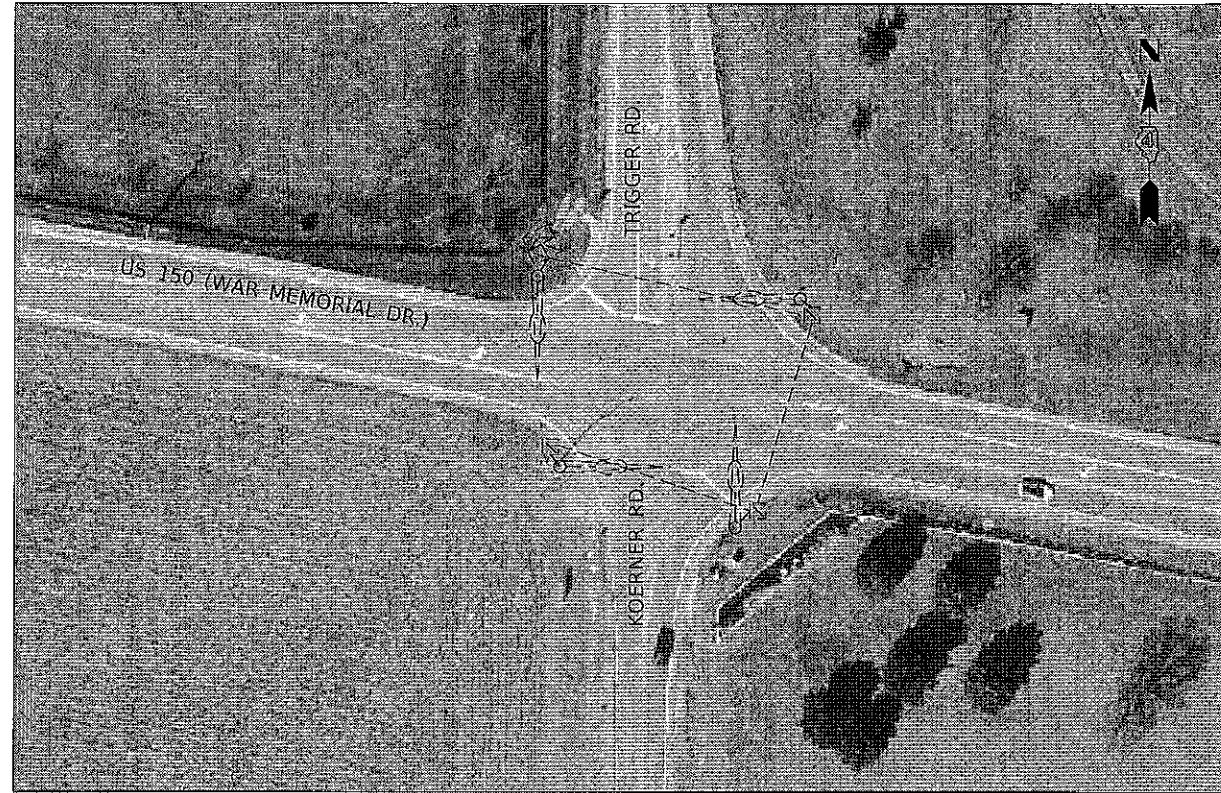
USER NAME = hansonj	DESIGNED -	REVISED -
	DRAWN -	REVISED -
PLOT SCALE = 1/4" = 1' / in.	CHECKED -	REVISED -
PLOT DATE = 10/16/2020	DATE -	REVISED -

STATE OF ILLINOIS
DEPARTMENT OF TRANSPORTATION

PROPOSED LED LUMINAIRE INSTALLATION DETAILS

SCALE: SHEET OF SHEETS STA. TO STA.

F.A. RTE.	SECTION	COUNTY	TOTAL SHEETS	SHEET NO.
VAR.	D4 SIGNAL INSTALLATION 2021	VARIOUS	21	6
			CONTRACT NO. 68G06	
ILLINOIS FED. AID PROJECT				



TRAFFIC SIGNAL LEGEND

- ☒ EX. TRAFFIC SIGNAL CONTROLLER CABINET
- ☒ EX. HANDHOLE
- ☒ EX. DOUBLE HANDHOLE
- ⌞⌞ EX. LUMINAIRE
- ⌞⌞ EX. COMBINATION MAST ARM
- ⌞⌞ EX. MAST ARM
- EX. CONDUIT

NOT TO SCALE

MODEL: Desktop FILE NAME: C:\common\GENT\zoster - bureau\6806 - Final Plans\6806 Dilemma Zone Project - Final.dwg

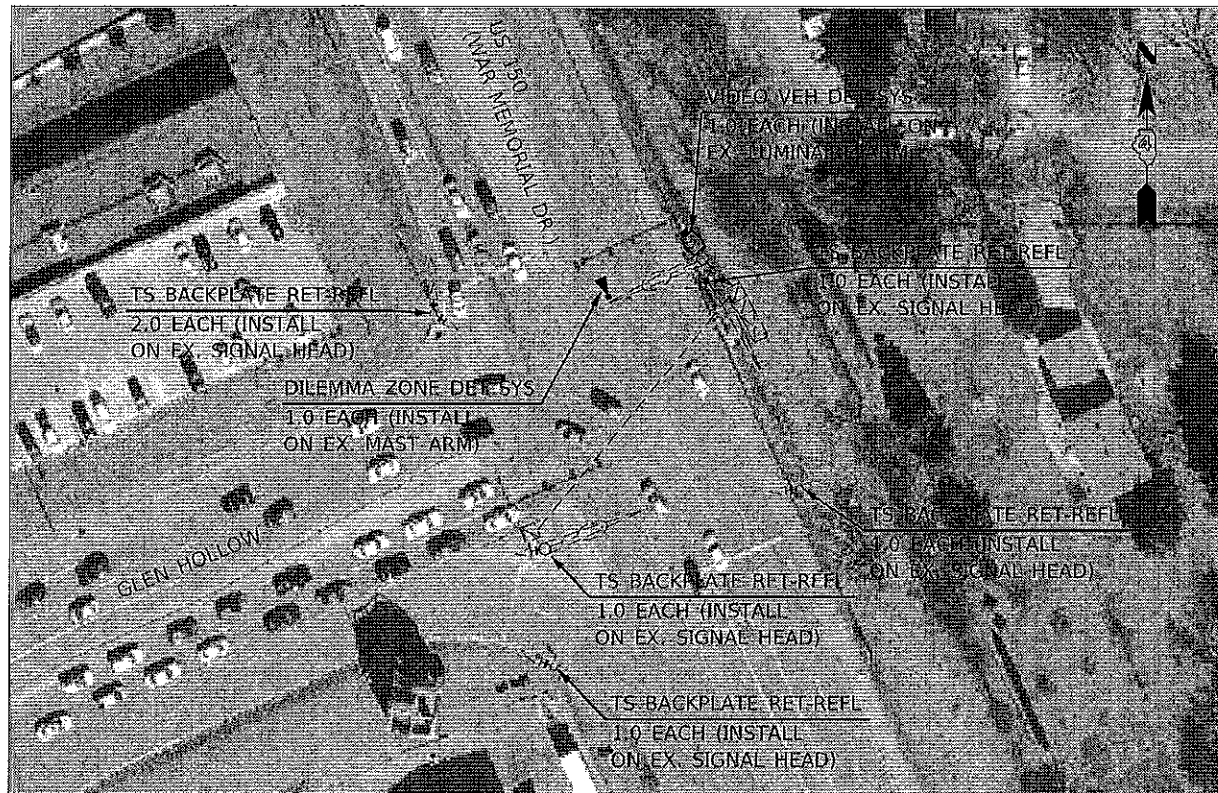
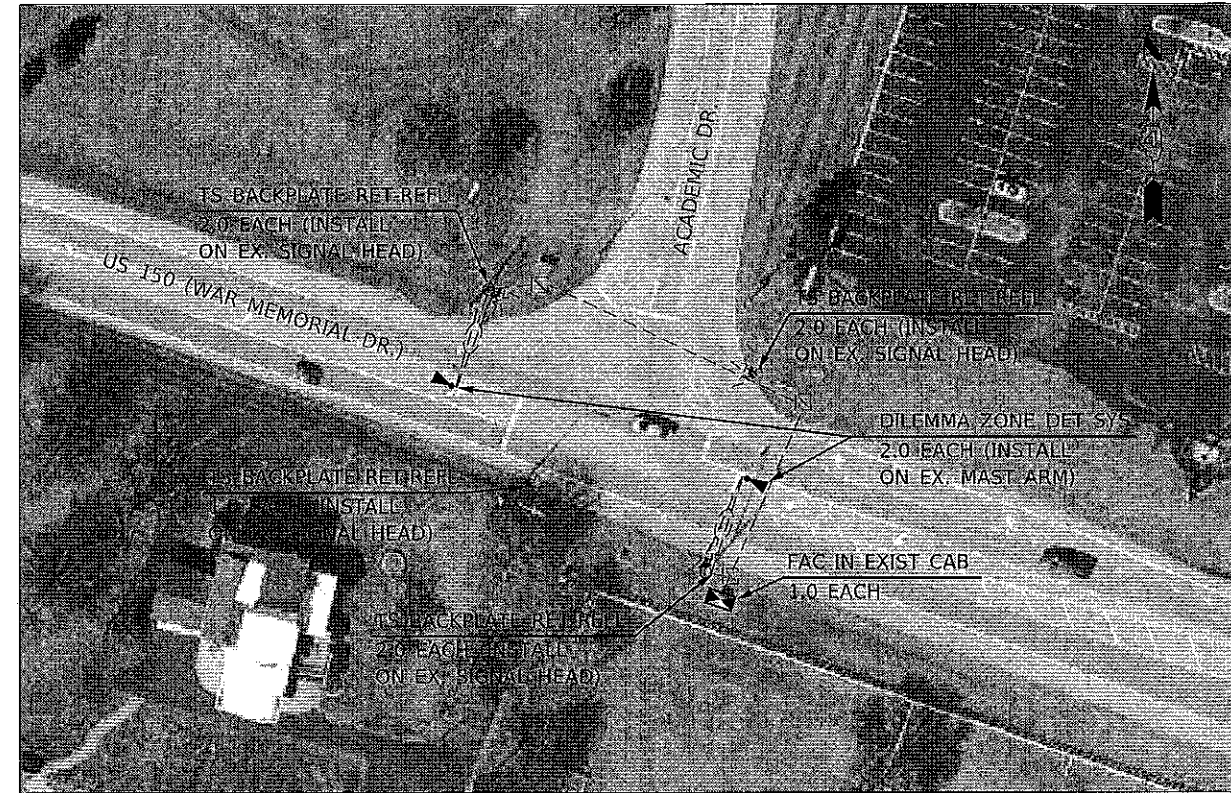
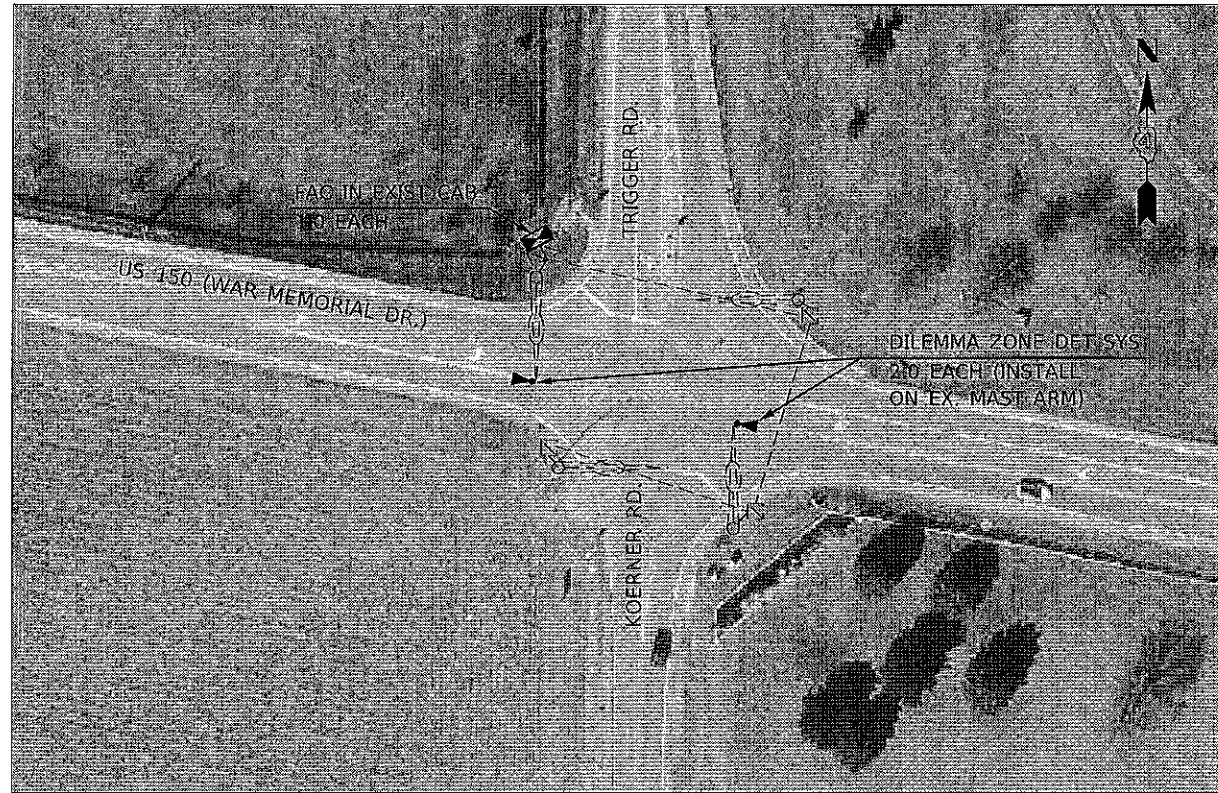
USER NAME = hansonj	DESIGNED -	REVISED -
PLOT SCALE = 174.3851' / in.	DRAWN -	REVISED -
PLOT DATE = 10/16/2020	CHECKED -	REVISED -
	DATE -	REVISED -

STATE OF ILLINOIS
DEPARTMENT OF TRANSPORTATION

EXISTING TRAFFIC SIGNAL PLANS
INTERSECTIONS ALONG US 150 & IL 40 - PEORIA

SCALE: SHEET OF SHEETS STA. TO STA.

F.A. RTE.	SECTION	COUNTY	TOTAL SHEETS	SHEET NO.
VAR.	D4 SIGNAL INSTALLATION 2021	VARIOUS	21	15
ILLINOIS FED. AID PROJECT			CONTRACT NO. 68G06	



SCHEDULE OF MATERIALS					
ITEM DESCRIPTION	UNIT	US 150 (WAR MEMORIAL DR.) & KOERNER RD./ TRIGGER RD.	US 150 (WAR MEMORIAL DR.) & ACADEMIC DR.	US 150 (WAR MEMORIAL DR.) & GLEN HOLLOW RD.	IL 40 (KNOXVILLE AVE.) & WOODSIDE DR.
TRAFFIC SIGNAL BACKPLATE, RETROREFLECTIVE	EACH	7.0	6.0	4.0	
DILEMMA ZONE DETECTION SYSTEM	EACH	2.0	2.0	1.0	2.0
FULL-ACTUATED CONTROLLER IN EXISTING CABINET	EACH	1.0	1.0		1.0
VIDEO VEHICLE DETECTION SYSTEM	EACH			1.0	

TRAFFIC SIGNAL LEGEND			
	EX. TRAFFIC SIGNAL CONTROLLER CABINET		EX. LUMINAIRE
	EX. HANDHOLE		EX. COMBINATION MAST ARM
	EX. DOUBLE HANDHOLE		EX. MAST ARM
			EX. CONDUIT
			PROP. DILEMMA ZONE DETECTION SYSTEM
			PROP. VEHICLE VIDEO DETECTION SYSTEM
			PROP. TRAFFIC SIGNAL CONTROLLER IN EX. CABINET

NOT TO SCALE

USER NAME = harsontj	DESIGNED -	REVISED -
	DRAWN -	REVISED -
PLOT SCALE = 174.3861' / in.	CHECKED -	REVISED -
PLOT DATE = 10.16.2020	DATE -	REVISED -

STATE OF ILLINOIS
DEPARTMENT OF TRANSPORTATION

PROPOSED TRAFFIC SIGNAL PLANS
INTERSECTIONS ALONG US 150 & IL 40 - PEORIA

SCALE: SHEET OF SHEETS STA. TO STA.

F.A. RTE.	SECTION	COUNTY	TOTAL SHEETS	SHEET NO.
VAR.	D4 SIGNAL INSTALLATION 2021	VARIOUS	21	16
ILLINOIS FED. AID PROJECT			CONTRACT NO. 68G06	