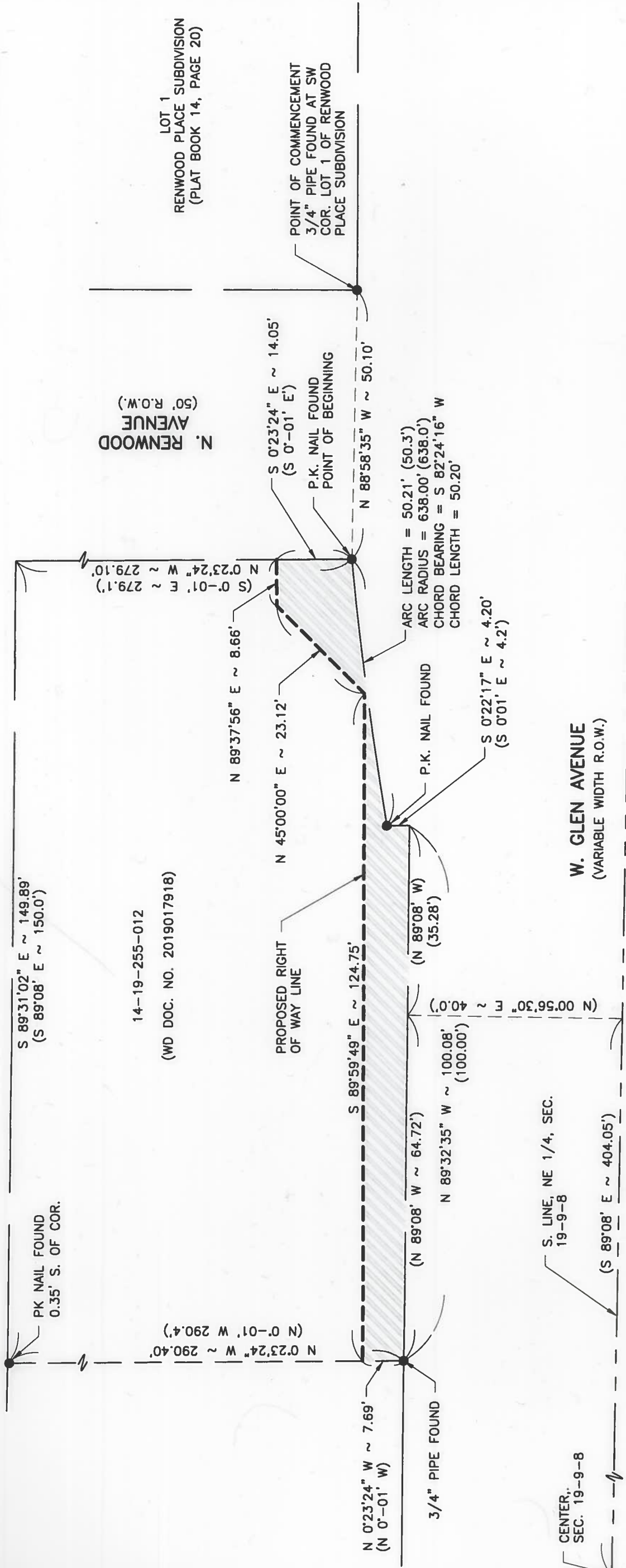


W. NORTHLAND AVENUE  
(60' R.O.W.)

2301 INVESTMENTS, LLC  
P.I.N. 14-19-255-012  
AREA = 1117 SQ.FT. ± OR 0.026 ACRES ±



State of Illinois )  
County of Peoria ) SS

We, Maurer-Stutz, Inc., Professional Design Firm No. 184-005754, do hereby state that in our opinion, this is a true and correct representation of a survey made for the City of Peoria, Illinois.

Dated at Peoria, Illinois, this 5<sup>TH</sup> day of MARCH, 2020.  
Maurer-Stutz, Inc.



*Steven P. Ford*  
 Steven P. Ford  
 Illinois Professional Land Surveyor #3653  
 License expires 11/30/2020

NOTE:  
BEARINGS ARE BASED ON THE ILLINOIS STATE  
PLANE COORDINATE SYSTEM, NAD 83 (2011), WEST  
ZONE.

A PART OF THE NORTHEAST QUARTER OF SECTION 19 IN  
TOWNSHIP 9 NORTH, RANGE 8 EAST OF THE FOURTH  
PRINCIPAL MERIDIAN, PEORIA COUNTY, ILLINOIS.

**PLAT OF DEDICATION**  
GLEN AVENUE PEORIA, ILLINOIS

**MAURER-STUTZ ENGINEERS SURVEYORS**  
 1514 N. DODD STREET, SUITE 100 | PEORIA, ILLINOIS 61604  
 PH: (309) 699-7655 | FAX: (309) 699-7654  
 1679 EAST ASH STREET | CANTON, ILLINOIS 61820  
 PH: (309) 497-7333 | FAX: (309) 497-4551  
 WORKING WITH YOU BY DESIGN™  
 ILLINOIS PROFESSIONAL DESIGN FIRM LICENSE #184-005754

RIGHT OF WAY  
PLAT OF DEDICATION  
2301 W. GLEN AVENUE  
PEORIA, ILLINOIS

2301 INVESTMENTS, LLC

Sheet Title: \_\_\_\_\_  
 Project: \_\_\_\_\_  
 Field Book: C-230  
 Drawn By: KDR  
 Reviewed By: SPF  
 Date: 24 February 2020  
 Project No.: 23119012.00  
 Drawing: 1  
 1 OF 1