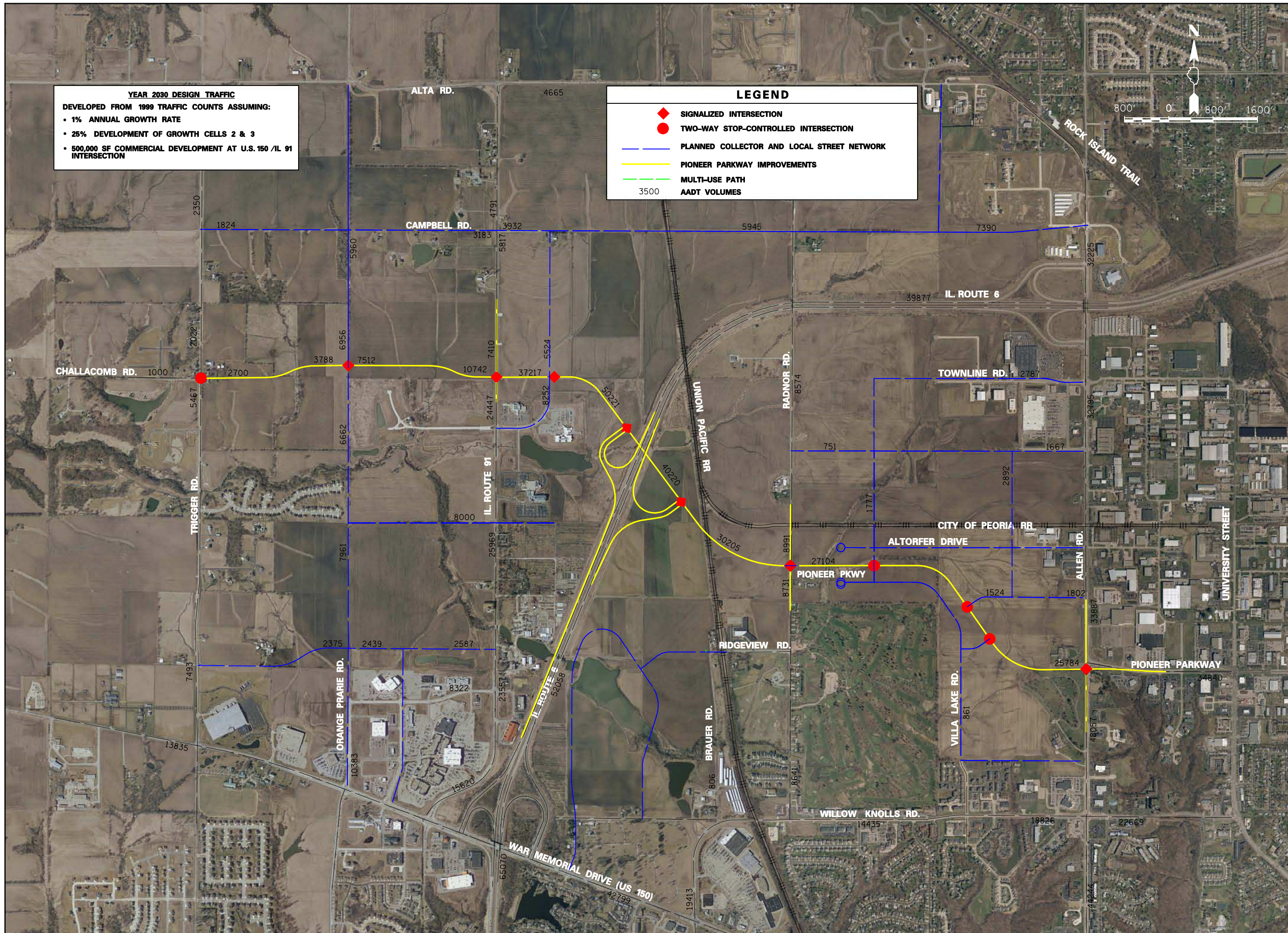


L:\Peoria\00060000\Draw\Exhibit\Design Report\Exhibits\Appendix A\Map A Ex 6.dgn  
8/23/2010



**YEAR 2030 DESIGN TRAFFIC**  
DEVELOPED FROM 1999 TRAFFIC COUNTS ASSUMING:  
 • 1% ANNUAL GROWTH RATE  
 • 25% DEVELOPMENT OF GROWTH CELLS 2 & 3  
 • 500,000 SF COMMERCIAL DEVELOPMENT AT U.S. 150 /IL 91 INTERSECTION

**LEGEND**

- ◆ SIGNALIZED INTERSECTION
- TWO-WAY STOP-CONTROLLED INTERSECTION
- PLANNED COLLECTOR AND LOCAL STREET NETWORK
- PIONEER PARKWAY IMPROVEMENTS
- MULTI-USE PATH
- 3500 AADT VOLUMES

PATH:  
FILE:  
UPDATE BY:  
SURVEY BOOK #  
XREF DGN:  
XREF DGN:  
DATE:

REVISIONS		
NUMBER	BY	DATE

**CITY OF PEORIA  
PIONEER PARKWAY EXTENSION  
NORTH ALIGNMENT  
AVERAGE DAILY TRAFFIC MAP**

**CMT**  
CRAWFORD, MURPHY & TILLY, INC.  
CONSULTING ENGINEERS  
© Copyright CMT, Inc.

DESIGN BY:	RMM
DRAWN BY:	RJE
CHECKED BY:	RMM
APPROVED BY:	EJH
DATE:	AUGUST 2010
JOB No:	00060-01-II