

**ORDINANCE NO. 17,139**

**AN ORDINANCE PROVIDING FOR THE TRANSFER OF A PORTION OF COUNTY HIGHWAY R52  
(RADNOR ROAD) BETWEEN ALTA LANE AND WILHELM ROAD  
AND FOR THE TRANSFER OF A PORTION OF COUNTY HIGHWAY RD31 (WILHELM ROAD)  
FROM RADNOR ROAD TO ILLINOIS ROUTE 40 (KNOXVILLE AVENUE)  
FROM THE COUNTY HIGHWAY SYSTEM TO THE MUNICIPAL STREET SYSTEM**

WHEREAS, the CITY OF PEORIA, hereinafter called the CITY, and the COUNTY OF PEORIA, hereinafter called the COUNTY, entered into an Intergovernmental Agreement on April 4, 2006 for the improvement, upgrade, maintenance, and jurisdictional transfer of Radnor Road (C.H. R52) from Alta Lane to Wilhelm Road and Wilhelm Road (C.H. D31) from Radnor Road to Knoxville Avenue; and

WHEREAS, all improvements as described in the Intergovernmental Agreement have been completed, except for the reconstruction of the intersection of Radnor Road with Alta Lane; and

WHEREAS, the METRO PEORIA COMMITTEE has determined that the immediate jurisdictional transfer of Radnor Road and Wilhelm Road is in the best interest of both the COUNTY and the CITY; and

WHEREAS, the Intergovernmental Agreement specifies that the COUNTY share of the Radnor Road improvement is One Hundred Ninety Nine And 00/100 Dollars (\$199.00) per lineal foot; and

WHEREAS, six hundred fifty (650) lineal feet of Radnor Road remains to be improved, for a total COUNTY cost of One Hundred Twenty Nine Thousand Three Hundred Fifty And 00/100 Dollars (\$129,350.00) for the improvement of Radnor Road at the intersection with Alta Lane.

NOW, THEREFORE BE IT ORDAINED by the City Council of Peoria that Radnor Road from Alta Lane to Wilhelm Road, that width being from right-of-way to right-of-way, in its entirety be Jurisdictionally Transferred from the County Highway System to the Municipal Street System; and

BE IT FURTHER ORDAINED by the City Council of Peoria that Wilhelm Road from Radnor Road to Illinois Route 40 (Knoxville Avenue), that width being from right-of-way to right-of-way, in its entirety be Jurisdictionally Transferred from the County Highway System to the Municipal Street System; and


BE IT FURTHER ORDAINED, that the City Manager of the City of Peoria be authorized to sign the Jurisdictional Transfer Agreements for Radnor Road and for Wilhelm Road; and


BE IT FURTHER ORDAINED, that ONE HUNDRED TWENTY NINE THOUSAND THREE HUNDRED FIFTY AND 00/100 DOLLARS (\$129,350.00) be received from the COUNTY to pay the CITY for the improvements to the intersection of Radnor Road with Alta Lane upon approval of the Jurisdictional Transfer of Radnor Road and Wilhelm Road by the ILLINOIS DEPARTMENT OF TRANSPORTATION.

THE CITY CLERK is directed to forward five (5) Certified Copies of this Ordinance and five (5) Jurisdictional Transfer Agreements for each road segment signed by the City Manager to the County of Peoria through its County Highway Department for transmission to and ultimate approval from the Illinois Department of Transportation.

ADOPTED BY THE CITY COUNCIL OF THE CITY OF PEORIA, ILLINOIS THIS 26<sup>th</sup> day of  
August, 2014.

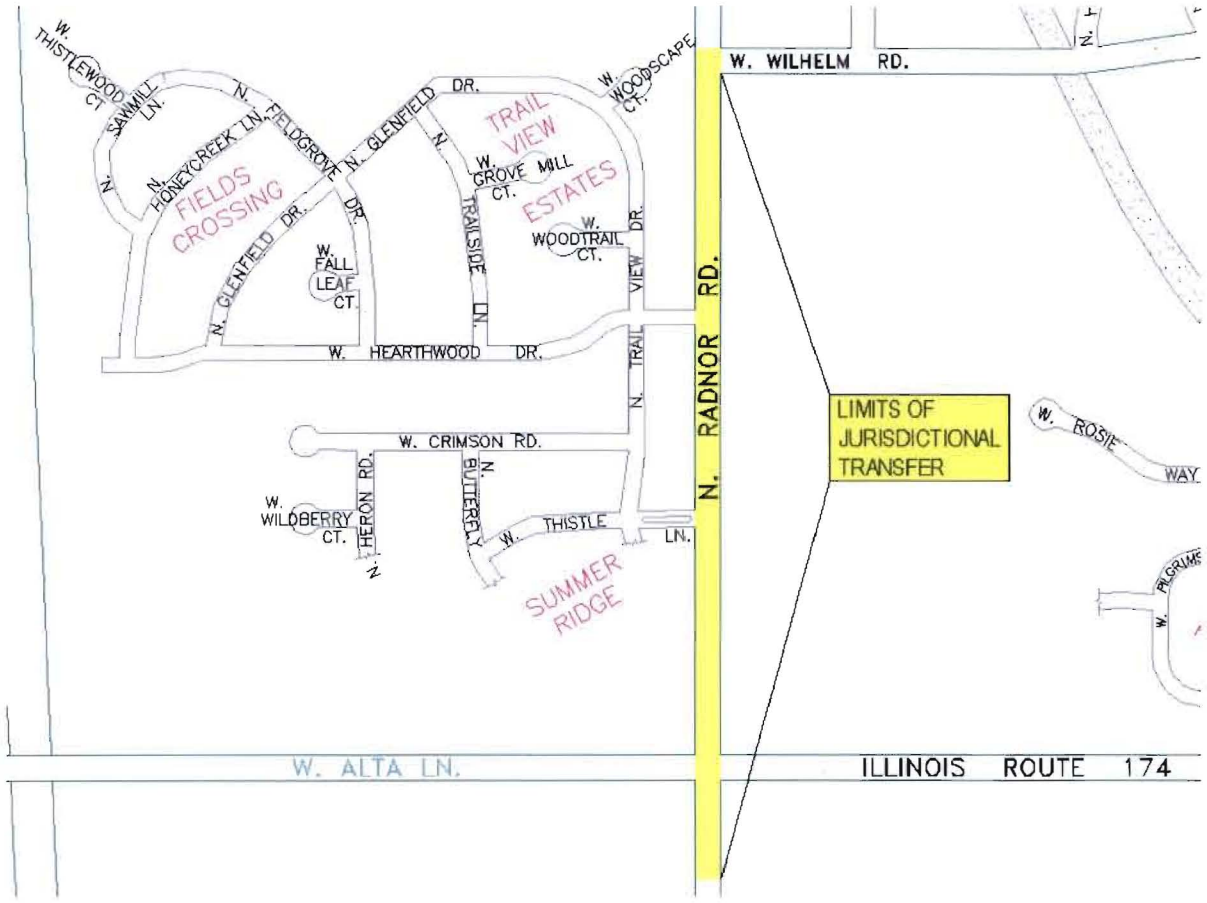
ATTEST:

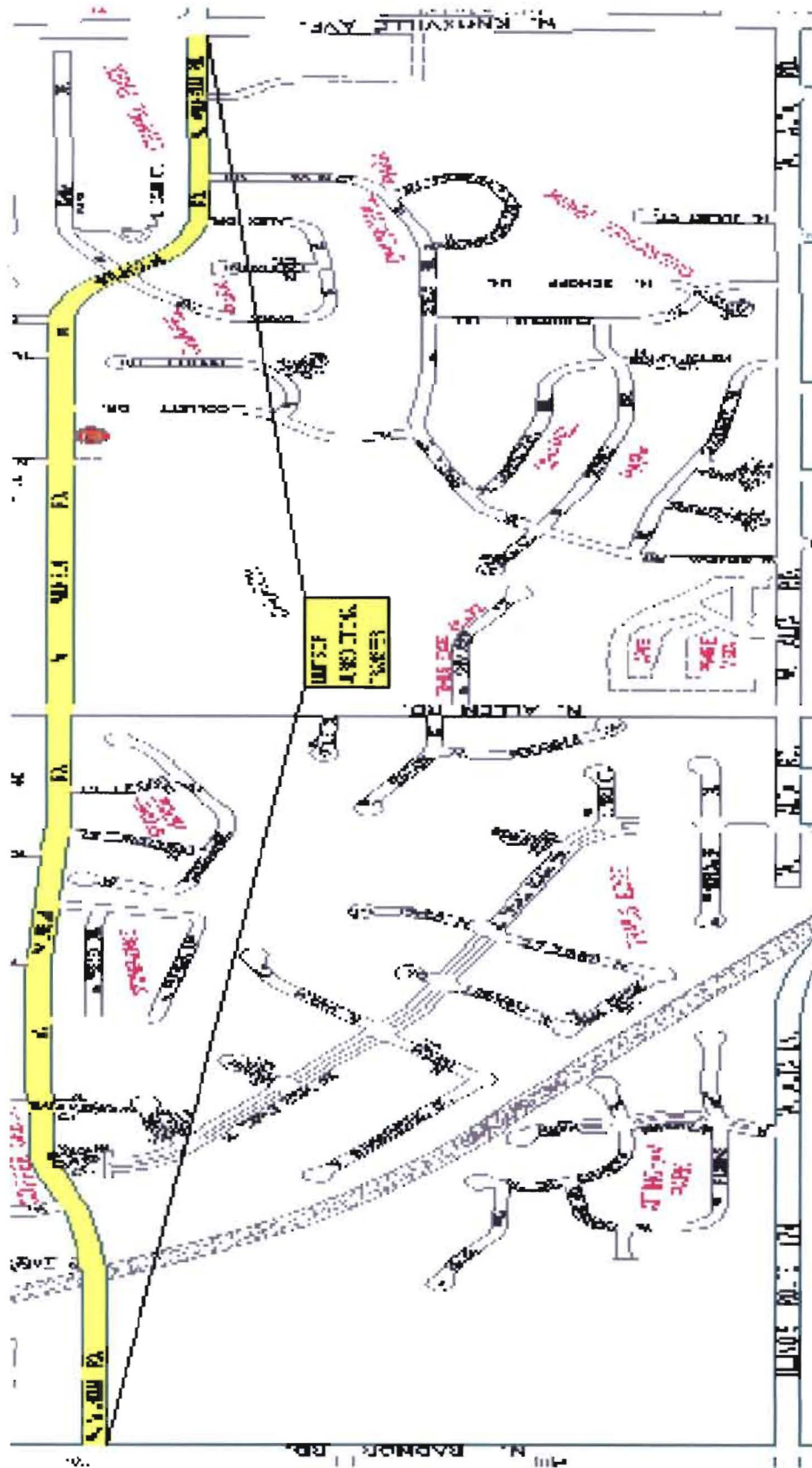
  
\_\_\_\_\_  
Mayor

  
\_\_\_\_\_  
City Clerk

EXAMINED AND APPROVED:

  
\_\_\_\_\_  
Corporation Counsel





CITY OF PEORIA/PEORIA COUNTY																	
Cost per LF to upgrade		\$ 1,000															
STREET NAME	FROM	TO	Length	Cost	ROW OWNED	PAV'T	CURB & GUTTER	MEDIAN	WALKS	MRKINGS	SIGNS	STORM DRAIN	SWEEP	SNOW	TREES	COMMENTS	Current Condition
Big Hollow Road	War Memorial	PCC Pavement	3725	\$ 3,725,000	County	County	County	N/A	N/A	County	County	County	County	County	County	Per Gene Hewitt: All Big Hollow used to be IDOT until it was improved and given to the County from War Memorial to Charter Oak and the rest to the City.	Currently two lane in good condition with ditches.
Big Hollow Road	Creek Bridge	South dead end	885	\$ 885,000	County	COP	COP	N/A	N/A	COP	COP	County	COP	COP	County	Per Gene Hewitt: All Big Hollow used to be IDOT until it was improved and given to the County from War Memorial to Charter Oak and the rest to the City.	Extremely low volumn already City street.
Charter Oak Road	Weaver Ridge	Koerner	9820	\$ 9,820,000	County	County	N/A	N/A	N/A	County	County	County	County	County	County		Partially in City and partially in County. Two lanes with ditches.
Gale	Hudson	Reservoir access	2415	\$ 2,415,000	COP	County	County	N/A	County	County	County	County	COP	COP	COP		Recent overlay, already has curbs and storm sewers.
Glen	Edgebrook Dr.	Knoxville Ave.	2075	\$ 2,075,000	County	COP	N/A	N/A	N/A	COP	COP	COP	COP	COP	COP	Maintenance agreement between COP & County per IDOT paperwork dated May 30, 2003	Two lane with ditches.
Koerner	City Limits	War Memorial	8810	\$ 8,810,000	County	County	N/A	N/A	N/A	County	County	County	County	County	County		Partially in City and partially in County. Two lanes with ditches.
Lake	Knoxville	Pleasant Ridge	2130	\$ 2,130,000	County	COP	COP	N/A	COP	COP	COP	COP	COP	COP	COP	Maintenance agreement between COP & County mentioned in COP Council Communications dated 9/6/77 and 5/17/83. Also, County email 7/21/08.	Two lane with ditches.
Mossville	Knoxville	City Limits	9683	\$ 9,683,000	County	County	N/A	N/A	N/A	County	County	County	County	County	County		Two lane with ditches.
Radnor Road	Willow Knolls	Alta Lane	13325	\$ 13,325,000	County	County	N/A	N/A	N/A	County	County	County	County	County	County		Partially in City and partially in County. Two lanes with ditches.
Radnor Road	Alta Lane	Wilhelm	2680	\$ 2,680,000	County	County	County	N/A	N/A	County	County	County	COP	COP	County	Jurisdictional Transfer from Township to County. City assumes jurisdiction after bridge on Wilhelm Road and intersection at Alta Lane is built.	Almost complete with only intersection left.
Reservoir	Richwoods	City Limits	925	\$ 925,000	County	COP	COP	N/A	N/A	COP	COP	COP	COP	COP	COP	COP has maintained for years.	
Richwoods	Sterling	Reservoir	6390	\$ 6,390,000	County	County	County	N/A	County	County	County	County	COP	COP	COP		Two lane with ditches.
Sheridan	Sherbrook	Northmoor	3165	\$ 3,165,000	County	COP	N/A	N/A	N/A	COP	COP	COP	COP	COP	COP	Maintenance agreement between COP & County per IDOT paperwork dated May 30, 2003	Two lane with ditches.
Sterling	Manor Pkwy	M.L. King	1655	\$ 1,655,000	County	County	N/A	N/A	N/A	COP	County	N/A	County	County	County	Jurisdictional transfer from City to County on August 30, 1989.	Two lane with ditches through golf course.
Trigger	War Memorial	City Limits	8850	\$ 8,850,000	County	County	N/A	N/A	N/A	County	County	County	County	County	County		Partially in City and partially in County. Two lanes with ditches.
Willow Knolls	War Memorial	Radnor	3210	\$ 3,210,000	County	County	County	N/A	N/A	County	County	County	County	County	County		Two lane with ditches.
Willow Knolls	Radnor	University	8030	\$ 8,030,000	County	County	County	County	County	County	County	County	COP	COP	County	Per City/County Agreement dated April 4, 1979 the County agrees to maintain Willow Knolls Road in its entirety.	Two lane with ditches. Recent overlay.
TOTAL				\$ 48,230,000													

