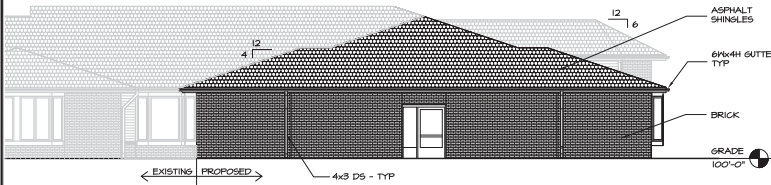
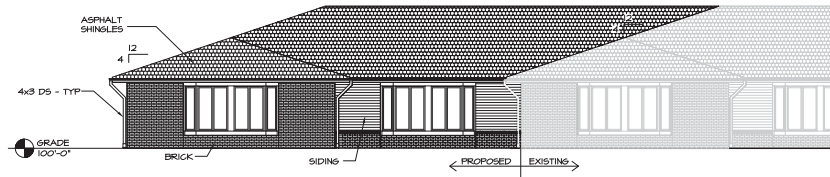


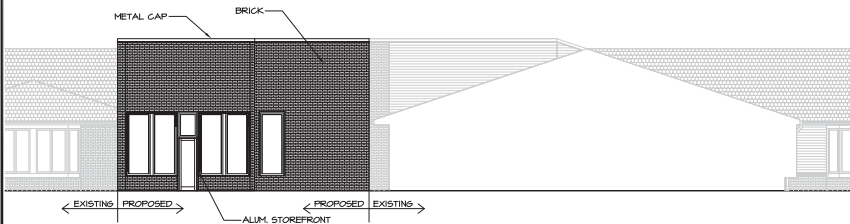
**19** TYPICAL TOWNHOUSE ADDITION ELEVATIONS  
SCALE 1/8" = 1'-0"



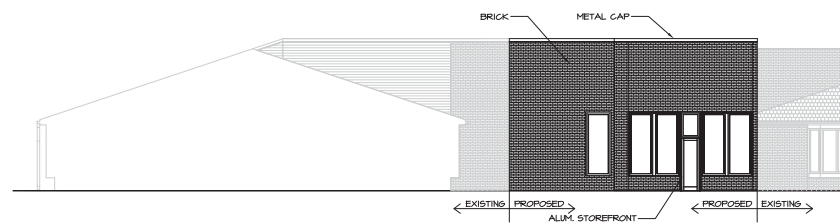
**18** NURSING CENTER EXPANSION ELEVATION  
SCALE 1/8" = 1'-0"



**10** NURSING CENTER EXPANSION ELEVATION  
SCALE 1/8" = 1'-0"



**17** DINING EXPANSION ELEVATION  
SCALE 1/8" = 1'-0"



**9** DINING EXPANSION ELEVATION  
SCALE 1/8" = 1'-0"

REVISIONS		No.	Date	Remarks
		1		
		2		
		3		
		4		
		5		
		6		
		7		
		8		
		9		
		10		

**P. J. HOERR, Inc.**  
 Building-Highway/Design/Build Contractors  
 407 California Plaza  
 Peoria, Illinois 61624  
 TEL: 309.688.9567

**AR&D**  
 Architectural Research & Design P.C.  
 2000 Memorial Research, Suite 501  
 Peoria, Illinois 61602  
 TEL: 309.675.9487  
 FAX: 309.675.9487  
 www.arand.com

This document is the sole property of AR&D, and shall not be reproduced, stored in a retrieval system, or transmitted in any form or by any means, electronic, mechanical, photocopying, recording, or by any information storage and retrieval system, without the written consent of AR&D. All rights are reserved whether or not copyrighted. License No. 060-000033

**Christian Buehler Memorial Home**  
 Peoria, IL

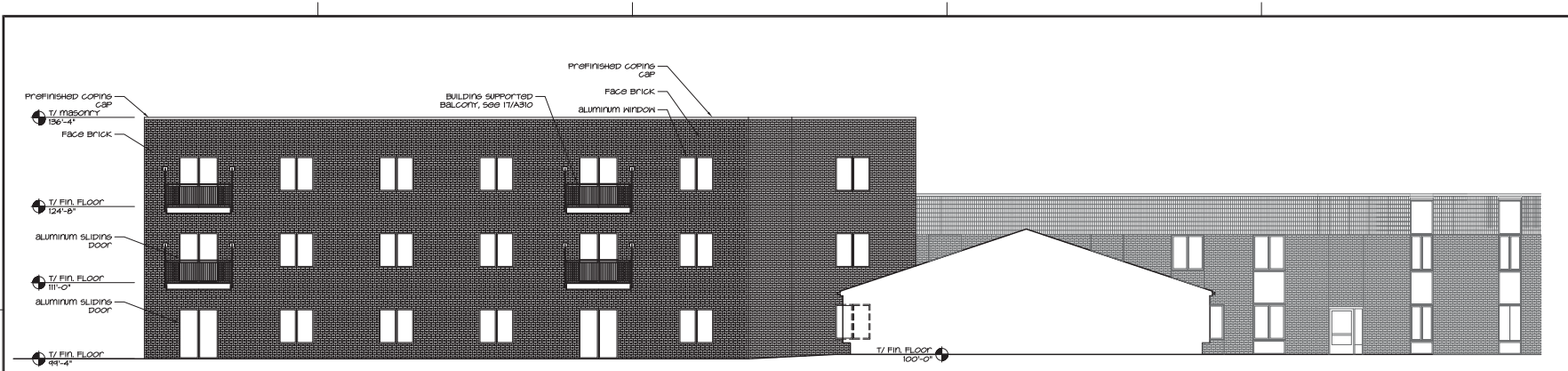
PROJECT NO.	1321
DATE	30JAN14
DRAWN BY	BGF/RLP
CHECKED BY	CLF
SPECIAL USE SUBMITTAL	

ELEVATIONS

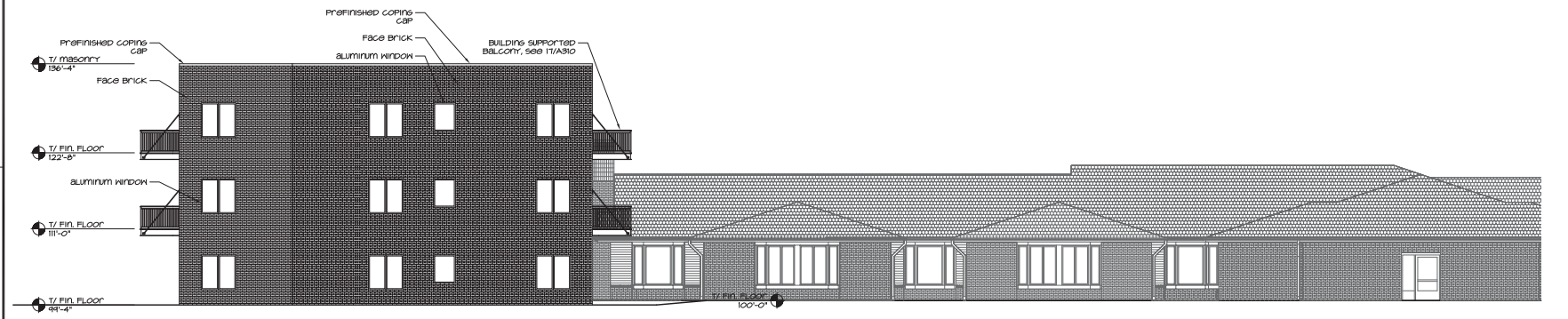
SHEET NO.

# A200

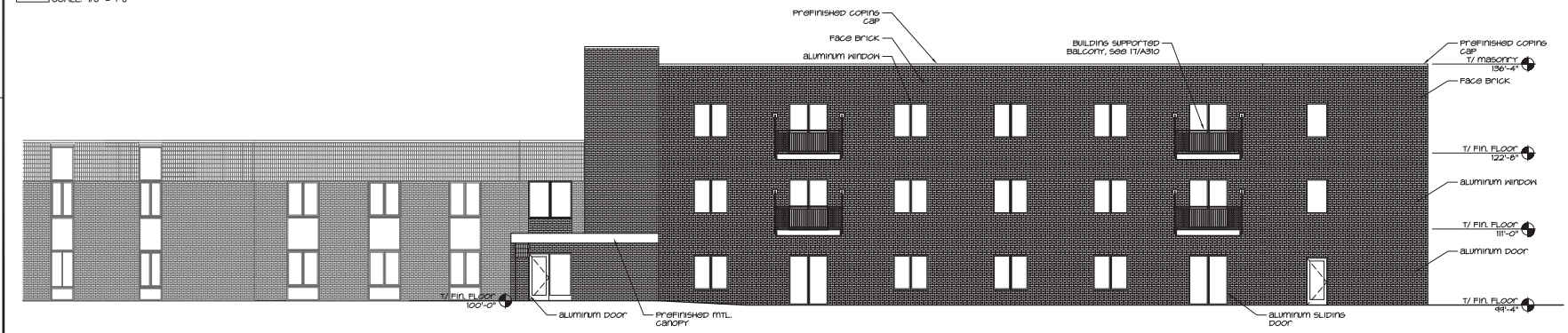
NOT FOR CONSTRUCTION



**19 SOUTH ELEVATION**  
SCALE: 1/8" = 1'-0"

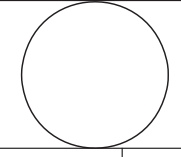


**18 WEST ELEVATION**  
SCALE: 1/8" = 1'-0"



**17 NORTH ELEVATION**  
SCALE: 1/8" = 1'-0"

REVISIONS		No.	Date	Remarks
1				
2				
3				
4				
5				
6				
7				
8				
9				
10				



**P.J. HOERR**  
CONSTRUCTING WITH CREATIVITY

Hoerr, Hoerr, Hoerr & Associates, Inc.  
1000 North Lincoln Street, Suite 100  
Peoria, Illinois 61602  
TEL: 309.673.3487  
FAX: 309.673.3487  
www.pjhoerr.com

**AR&D**  
Architectural Research & Design P.C.  
300 North Lincoln Street, Suite 301  
Peoria, Illinois 61602  
TEL: 309.673.3487  
FAX: 309.673.3487  
www.arand.com

All drawings are the property of AR&D and are to be used only for the project and conditions for which they were submitted. It may not be used for any other project without the written consent of AR&D. All rights are reserved whether or not copyrighted.  
License No. 060-00333 Service Corporation

Independent Living Addition for  
**Christian Buehler Memorial Home**  
Peoria, Illinois

PROJECT NO. 1321B  
DATE 01OCT14  
DRAWN BY BGF  
CHECKED BY CLF  
DESIGN DEVELOPMENT

ELEVATIONS

SHEET NO.

**A210**