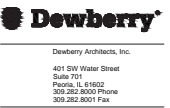


PARKING TOTALS	
THE FOLLOWING CALCULATION INDICATES THE TOTAL NUMBER OF PARKING SPACES OF THE PROPOSED SITE AS SHOWN:	
EXISTING: 265 STANDARD + 15 HANDICAP =	278 SPACES
NEW: 45 STANDARD + 2 HANDICAP =	47 SPACES
<b>TOTAL PARKING SPACES</b>	<b>327 SPACES</b>
VEHICULAR TRAFFIC GENERATION	
THE FOLLOWING CALCULATION REPRESENTS THE NUMBER OF VEHICLES THAT WILL BE ON SITE BASED ON AN AVERAGE SEATING CAPACITY OF AN EVENT HELD AT THE PROPOSED PARISH CENTER.	
EVENT AVERAGE SEATING CAPACITY:	300 SEATS
VEHICULAR CONVERSION FACTOR:	1 VEHICLE PER 4 SEATS
300 SEATS X (1 VEHICLE / 4 SEATS) =	75 VEHICLES
<b>TOTAL NUMBER OF VEHICLES GENERATE BY SITE USE:</b>	<b>75 VEHICLES</b>
REQUIRED LANDSCAPING POINTS	
THE FOLLOWING CALCULATION REPRESENTS THE REQUIRED NUMBER OF LANDSCAPING POINTS AS DEFINED BY THE CITY CODE APPENDIX C SECTION 8.2. THE AREA USED TO CALCULATE THE REQUIRED POINTS HAS BEEN RESTRICTED TO THE AREA OF THE SITE THAT WILL BE IMPROVED BY THE PROJECT. LAYOUT OF THE PROPOSED LANDSCAPING HAS NOT BEEN SHOWN HEREIN. A PROFESSIONAL LANDSCAPER WILL COMPLETE THE DESIGN FOR THE LANDSCAPING TO MEET ALL CITY OF PEORIA ZONING AND POINT REQUIREMENTS.	
<b>REQUIRED LANDSCAPING POINTS (CITY CODE APPENDIX C 8.2)</b>	
<b>FRONT YARD LANDSCAPING POINTS (CITY CODE 8.2.6)</b>	
ALL FRONT YARD POINTS SHALL COME FROM THE TREE CLASSIFICATION:	
EAST YARD REQUIRED POINTS = 160.0	= 150 POINTS
WEST YARD REQUIRED POINTS = 215.0	= 108 POINTS
<b>PARKING LOT LANDSCAPING POINTS (CITY CODE 8.2.7)</b>	
ALL PARKING LOT POINTS SHALL COME FROM THE SHADE TREE CLASSIFICATION:	
PARKING LOT LANDSCAPING FOR POINTS SHALL BE WITHIN 10 FT OF THE BACK OF CURB.	
PARKING LOT REQUIRED POINTS = NEW PARKING SPACES	
PARKING LOT REQUIRED POINTS = 43	POINTS
<b>TRANSITIONAL BUFFER LANDSCAPING POINTS</b>	
ONE-HALF OF THE POINTS MUST BE ACHIEVED BY UTILIZING PLANTS FROM THE TREE CLASSIFICATION AND ONE-HALF MUST BE FROM THE SHRUB CLASSIFICATION. TWO SPECIES OF TREES SHALL BE UTILIZED AND TWO SPECIES OF SHRUBS SHALL BE UTILIZED.	
TRANSITIONAL BUFFER REQUIRED POINTS = 134	POINTS
TREE REQUIREMENT = 134.2	= 67 POINTS
SHRUB REQUIREMENT = 134.2	= 67 POINTS
<b>TOTAL REQUIRED LANDSCAPING POINTS = 465 POINTS</b>	



**ST. PHILOMENA**  
**ST. PHILOMENA PARISH CENTER**  
 33000 NORTH TWELVE OAKS DRIVE  
 PEORIA, ILLINOIS 61604  
 ISSUED FOR ZONING REVIEW - SPECIAL USE PERMIT

CORPORATE SEAL

SEAL

PRELIMINARY DOCUMENTS  
NOT FOR CONSTRUCTION

SCALE

No.	Description	Date
<b>REVISIONS</b>		
DRAWN BY	AJK	
APPROVED BY	GJR	
CHECKED BY	GJR	
DATE	2015.10.01	

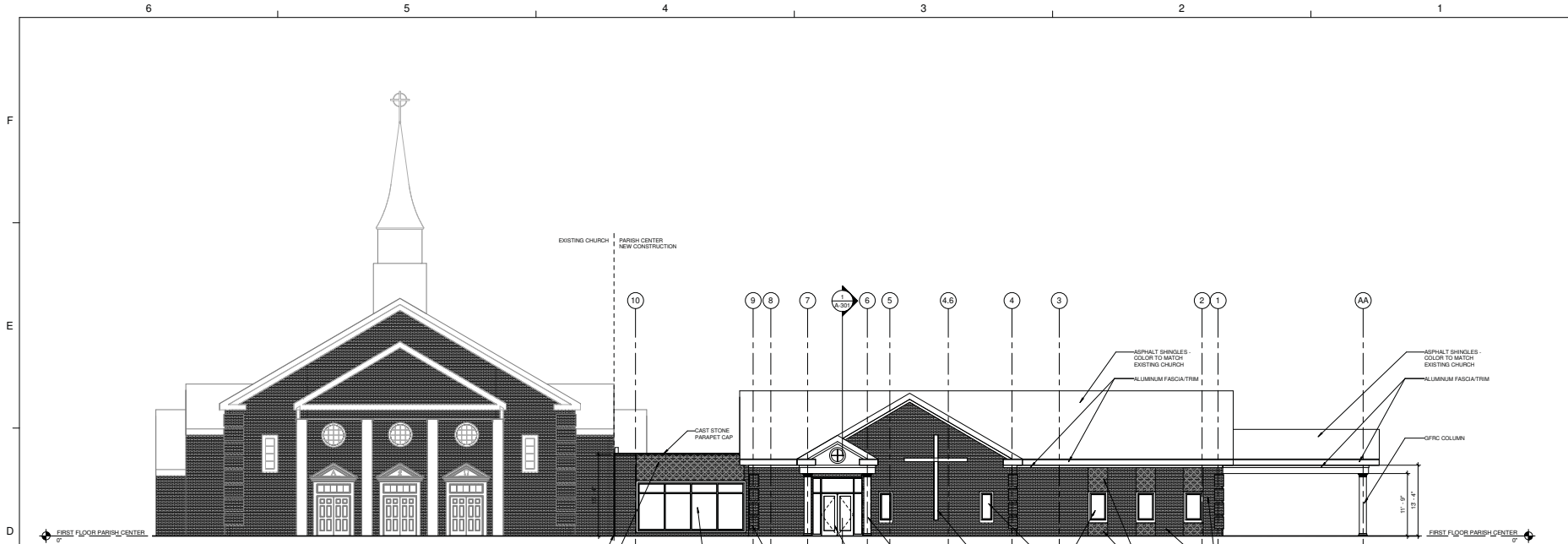
TITLE

**PROPOSED ZONING SITE PLAN**

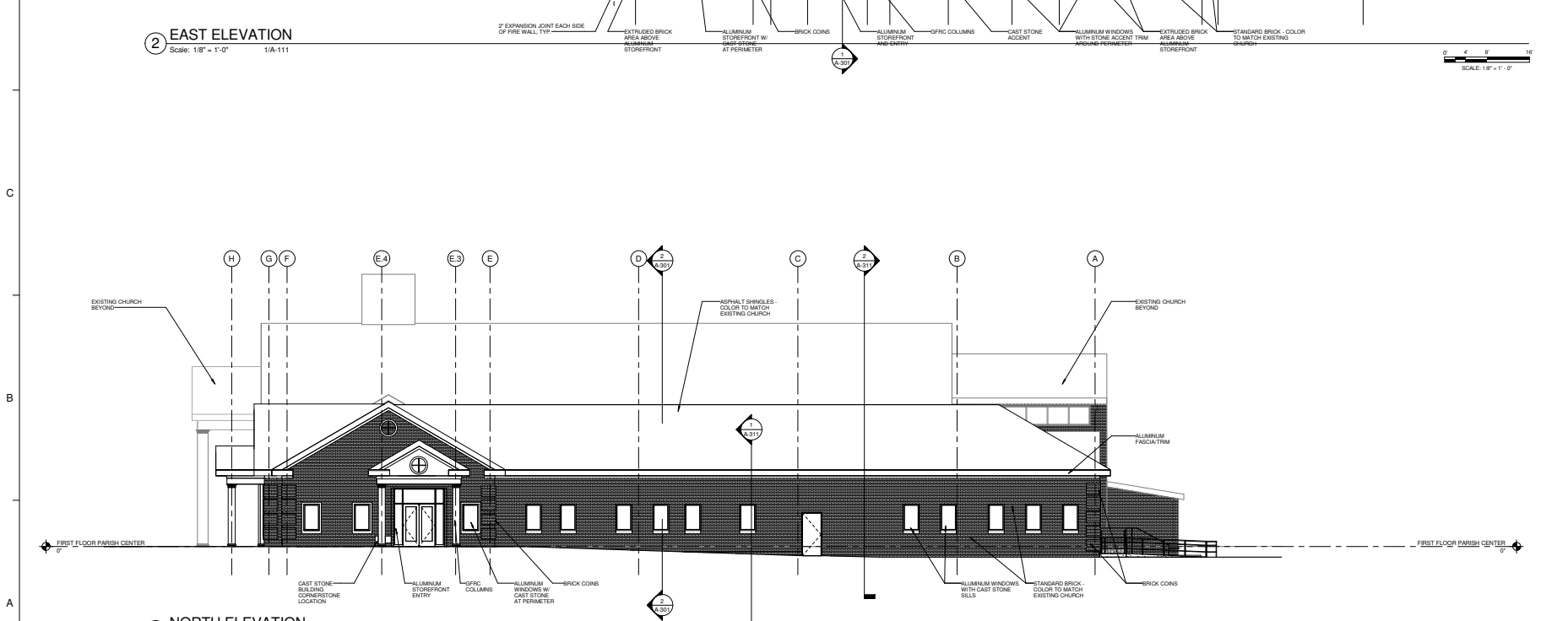
PROJECT NO. 50075041

**Z-101**

SHEET NO.



2 EAST ELEVATION  
Scale: 1/8" = 1'-0" 1/A-111



1 NORTH ELEVATION  
Scale: 1/8" = 1'-0" 1/A-111

ST. PHILOMENA  
ST. PHILOMENA PARISH CENTER

3300 NORTH TWELVE OAKS DRIVE  
PEORIA, ILLINOIS 61604

ISSUED FOR ZONING REVIEW - SPECIAL USE PERMIT

CORPORATE SEAL

SEAL

PRELIMINARY DOCUMENTS  
NOT FOR CONSTRUCTION

SCALE

1/8" = 1'-0"

No.	Description	Date

REVISIONS

DRAWN BY \_\_\_\_\_ Author  
 APPROVED BY \_\_\_\_\_ Approver  
 CHECKED BY \_\_\_\_\_ Checker  
 DATE 2015.10.01

TITLE  
EXTERIOR ELEVATIONS

PROJECT NO. 50075041

Z-102

SHEET NO.

ST. PHILOMENA

ST. PHILOMENA PARISH CENTER

3300 NORTH TWELVE OAKS DRIVE  
PEORIA, ILLINOIS 61604

ISSUED FOR ZONING REVIEW - SPECIAL USE PERMIT

CORPORATE SEAL

SEAL

PRELIMINARY DOCUMENTS  
NOT FOR CONSTRUCTION

SCALE

1/8" = 1'-0"

No. Description Date

REVISIONS

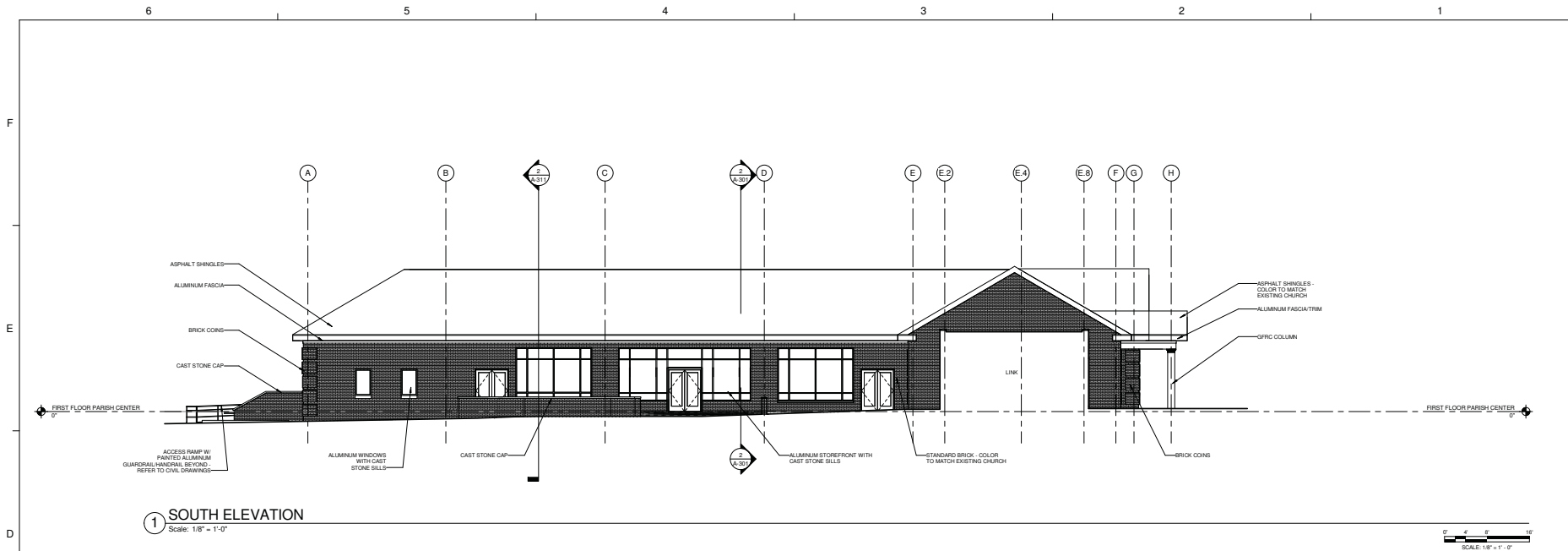
DRAWN BY \_\_\_\_\_ Author  
APPROVED BY \_\_\_\_\_ Approver  
CHECKED BY \_\_\_\_\_ Checker  
DATE 2015.10.01

TITLE  
EXTERIOR ELEVATIONS

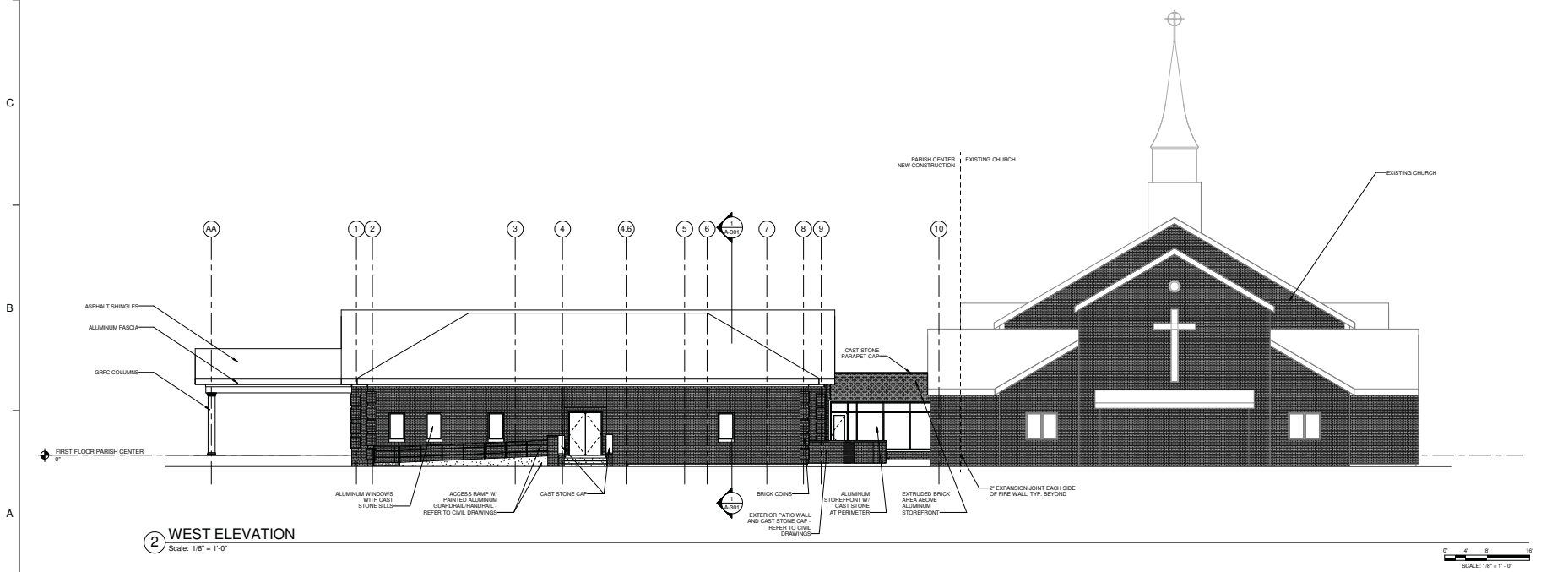
PROJECT NO. 50075941

Z-103

SHEET NO.



1 SOUTH ELEVATION  
Scale: 1/8" = 1'-0"



2 WEST ELEVATION  
Scale: 1/8" = 1'-0"

6 5 4 3 2 1

GENERAL RENDERING NOTES  
 1. RENDERINGS ARE PROVIDED FOR REFERENCE ONLY. TO ASSIST IN THE UNDERSTANDING OF THE DESIGN CONCEPT AND IS NOT INTENDED TO SUPERCEDE INFORMATION CONTAINED IN OTHER DOCUMENTS RELATED TO THIS WORK.

**Dewberry**  
 Dewberry Architects, Inc.  
 401 5th West Street  
 Suite 701  
 Peoria, IL 61602  
 309.282.8000 Phone  
 309.292.8001 Fax



SOUTHWEST PERSPECTIVE

EXISTING CHURCH

- CAST STONE ACCENT
- ALUMINUM FASCIA
- ALUMINUM FASCIA
- ASPHALT SHINGLES - COLOR TO MATCH EXISTING CHURCH
- ALUMINUM FASCIA
- GFRG COLUMNS

- GFRG COLUMNS
- CAST STONE ACCENT
- STANDARD BRICK - COLOR TO MATCH EXISTING CHURCH
- EXTRUDED BRICK - ABOVE AND BELOW WINDOWS
- ALUMINUM WINDOWS - WITH STONE ACCENT TRIM AROUND PERIMETER
- BRICK CORNS AT CORNERS



SOUTHEAST PERSPECTIVE

- ALUMINUM WINDOWS - WITH CAST STONE SILL
- ACCESS RAMP W/ PAINTED ALUMINUM GUARDRAILS - REFER TO CIVIL DRAWINGS
- CAST STONE CAP
- EXTERIOR PATIO - REFER TO CIVIL DRAWINGS

- ASPHALT SHINGLES - COLOR TO MATCH EXISTING CHURCH
- ALUMINUM FASCIA
- EXISTING CHURCH
- CAST STONE ACCENT
- EXISTING CHURCH



NORTHWEST PERSPECTIVE

- 2" EXPANSION JOINT - EACH SIDE OF FIRE WALL, TYP.
- EXTRUDED BRICK - ABOVE WINDOWS
- ALUMINUM STOREFRONT - WITH CAST STONE TRIM AROUND PERIMETER
- STANDARD BRICK - COLOR TO MATCH EXISTING CHURCH
- GFRG COLUMNS
- ALUMINUM WINDOWS - WITH STONE ACCENT TRIM AROUND PERIMETER

- ASPHALT SHINGLES - COLOR TO MATCH EXISTING CHURCH
- ALUMINUM FASCIA

ST. PHILOMENA  
**ST. PHILOMENA PARISH CENTER**  
 3300 NORTH TWELVE OAKS DRIVE  
 PEORIA, ILLINOIS 61604  
 ISSUED FOR ZONING REVIEW - SPECIAL USE PERMIT

CORPORATE SEAL

SEAL

PRELIMINARY DOCUMENTS  
 NOT FOR CONSTRUCTION

SCALE

1/2" = 1'-0"

No.	Description	Date

REVISIONS

DRAWN BY	CBM
APPROVED BY	CBM
CHECKED BY	CBM
DATE	2015.10.01

TITLE  
**EXTERIOR ELEVATION RENDERINGS**

PROJECT NO. 5075941

**Z-104**

SHEET NO.

F  
E  
D  
C  
B  
A