

# MB-DT-46 EXTERIOR MENU BOARD

Peoria, IL

## Blue Outdoor Drive-Thru Menu Board

### MB-DT-46

Standard Menu Board for Drive-Thru Lane

LED Internal Illumination

POP Graphic panels must be purchased separately

POPP-Out magnet access panels included for easy in & out of POP panels

"-CS" option for 160mph coastal wind standards available

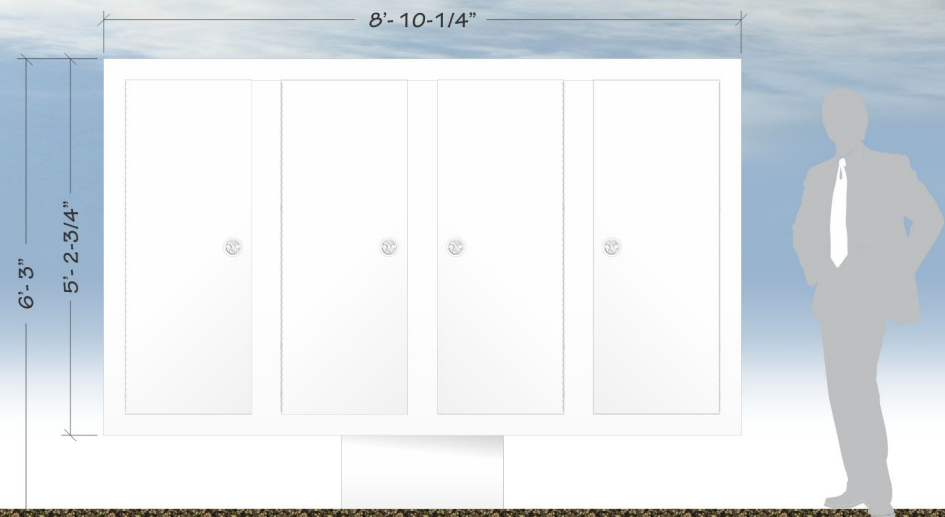
Locking rear access doors (4)



FRONT



REAR



SCALE: 3/8" = 1'

\*SCALE AND COLORS NOT REPRESENTATIVE FROM EMAIL ATTACHMENTS  
\*ALL MEASUREMENTS ARE APPROXIMATE

#### EXISTING SIGNAGE

SCALE: N.T.S.



#### SCOPE OF WORK

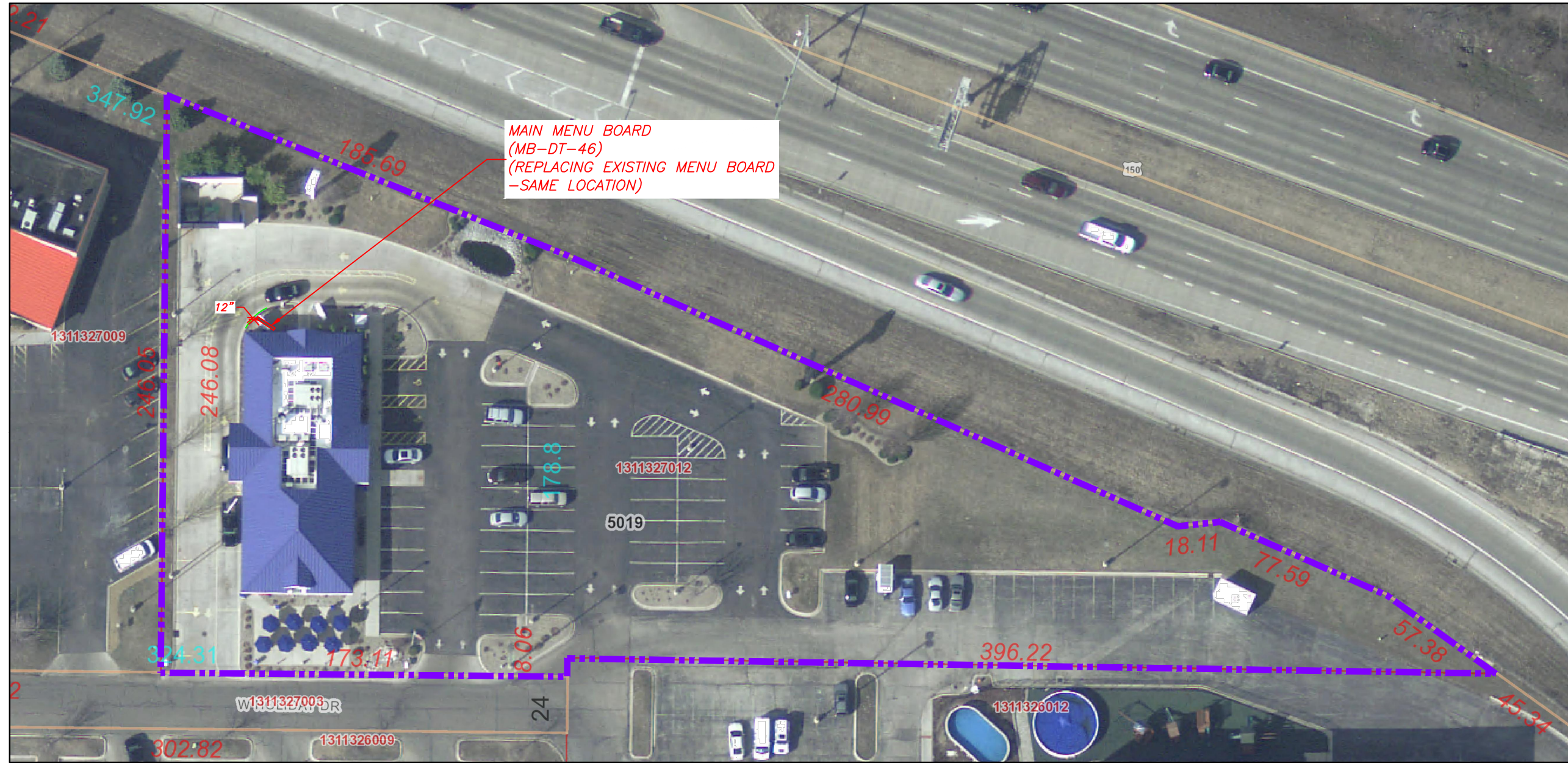
- REMOVE EXISTING EXTERIOR MENU BOARD
- INSTALL NEW BLUE EXTERIOR MENU BOARD

#### NOTES

SALES PERSON: MARK WESSELL	DESIGNED BY: R EVANS	AO: 20757
-------------------------------	-------------------------	--------------

DATE CREATED / REVISION HISTORY	
4/04/19 - NEW	
4/18/19 - PERMITTING	

FILE PATH: T:\o20757 - Culver\_s of Peoria\_IL\_309 (266)\Art



LOCATION:

PEORIA, IL-  
HOLIDAY DRIVE

Client:  
Culver Franchising System, Inc.  
4825 E. Kearney St.  
Springfield, MO 65803  
(417) 862-2454

Client:  
Culver Franchising System, Inc.  
540 Water Street  
Prairie du Sac, WI 53578  
p (608) 643-7980

CULVER FRANCHISING SYSTEM, INC.  
NEW CULVER'S-SIGNAGE  
5019 W. HOLIDAY DRIVE  
PEORIA, IL 61615  
SIGN PLACEMENT PLAN

Project No.: 21321  
Drawn By: DEN  
Reviewed By: NW  
Date: 5-14-19  
Sheet Number:

1 OF 1

SCALE 1" = 50'



APPROVED BY C.F.S.I.  
5-14-19

County of Peoria, Tri-County Regional Planning  
Commission, Kucera International, Inc.  
Peoria County, IL, HERE, USGS



Disclaimer: Data is provided 'as is' without warranty or any representation of accuracy, timeliness or completeness. The burden for determining fitness for, or the appropriateness for use, rests solely on the requester. The requester acknowledges and accepts the limitations of the Data, including the fact that the Data is in a constant state of maintenance. This website is NOT intended to be used for legal litigation or boundary disputes and is informational only. -Peoria County GIS Division