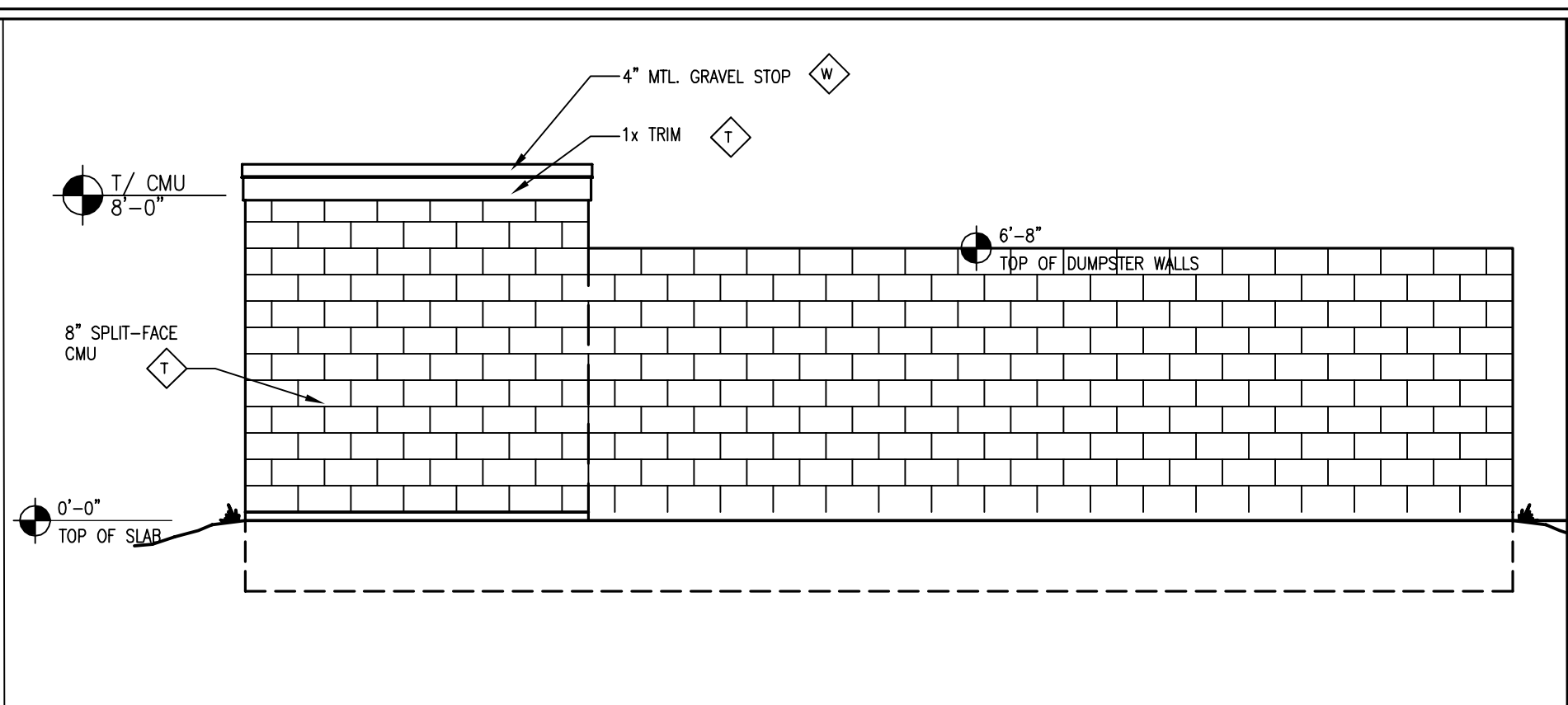
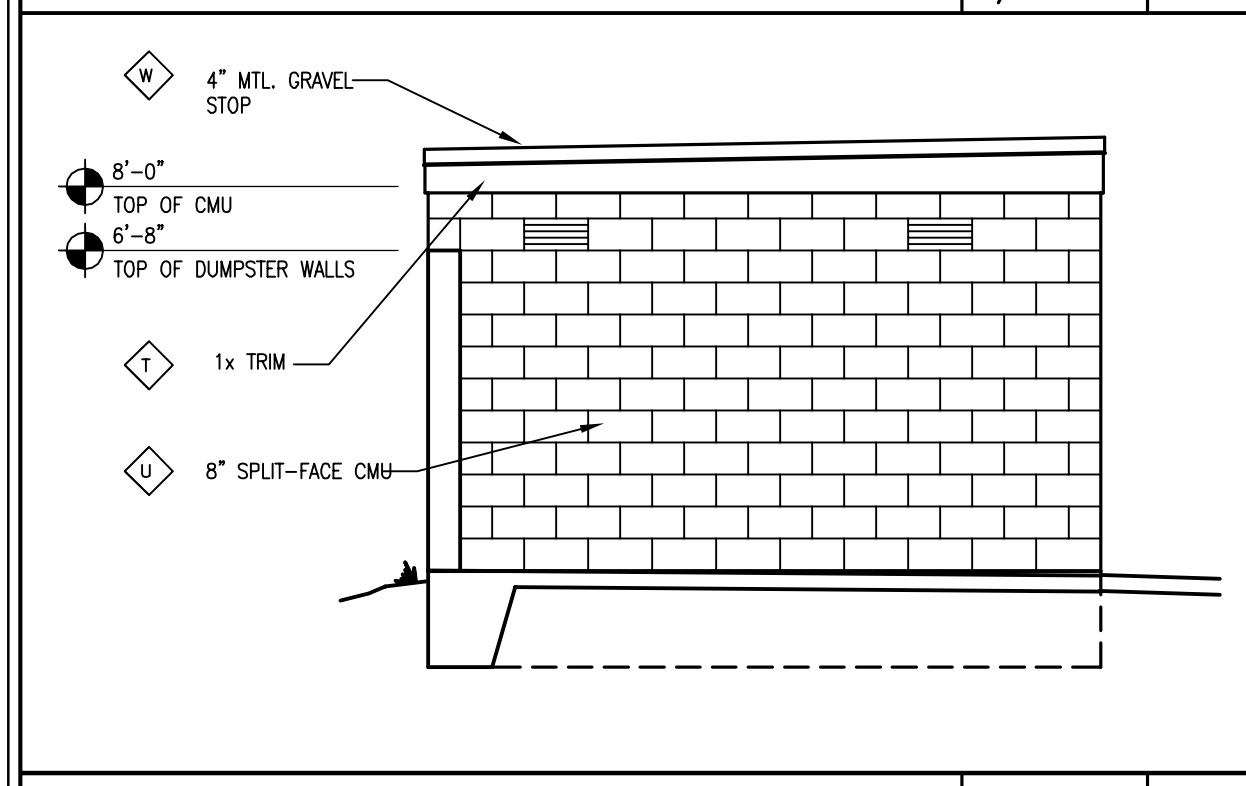


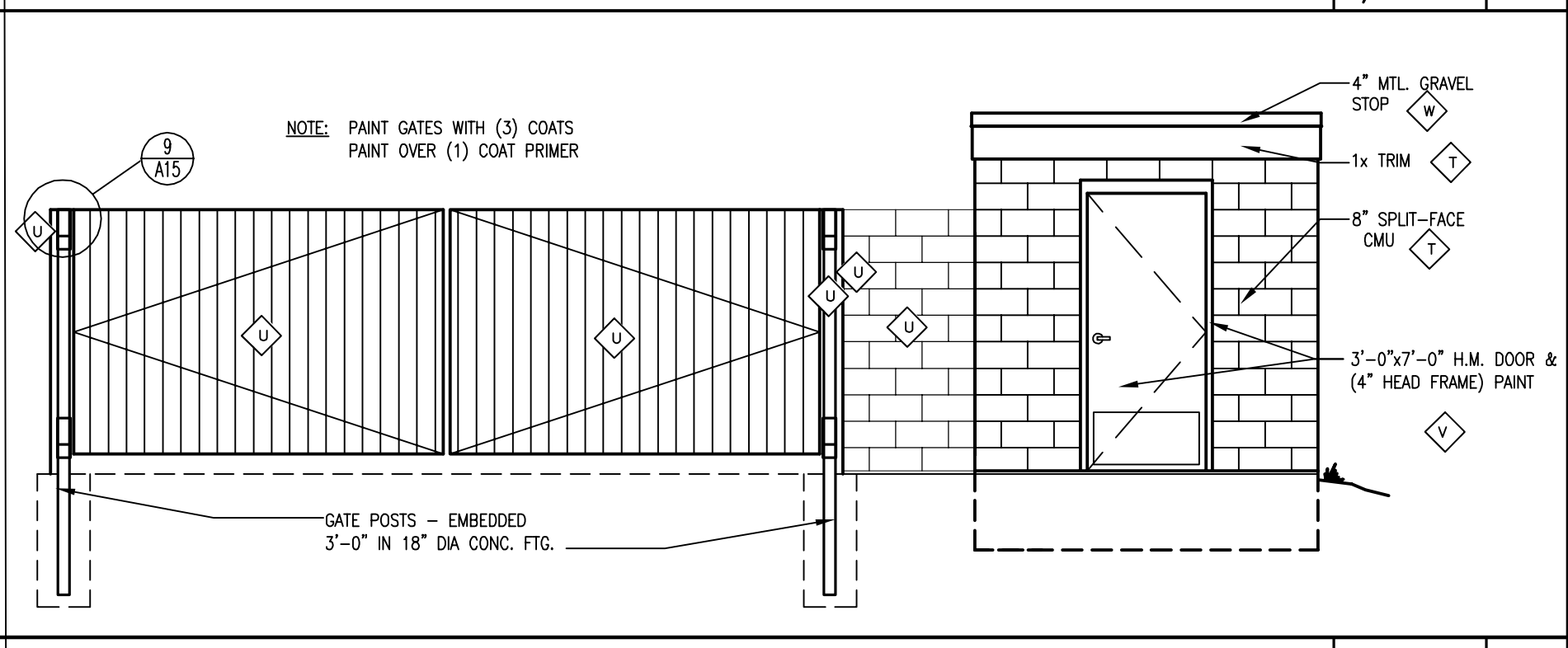
GARBAGE ENCLOSURE SIDE SCALE: 1/4"=1'-0" 9



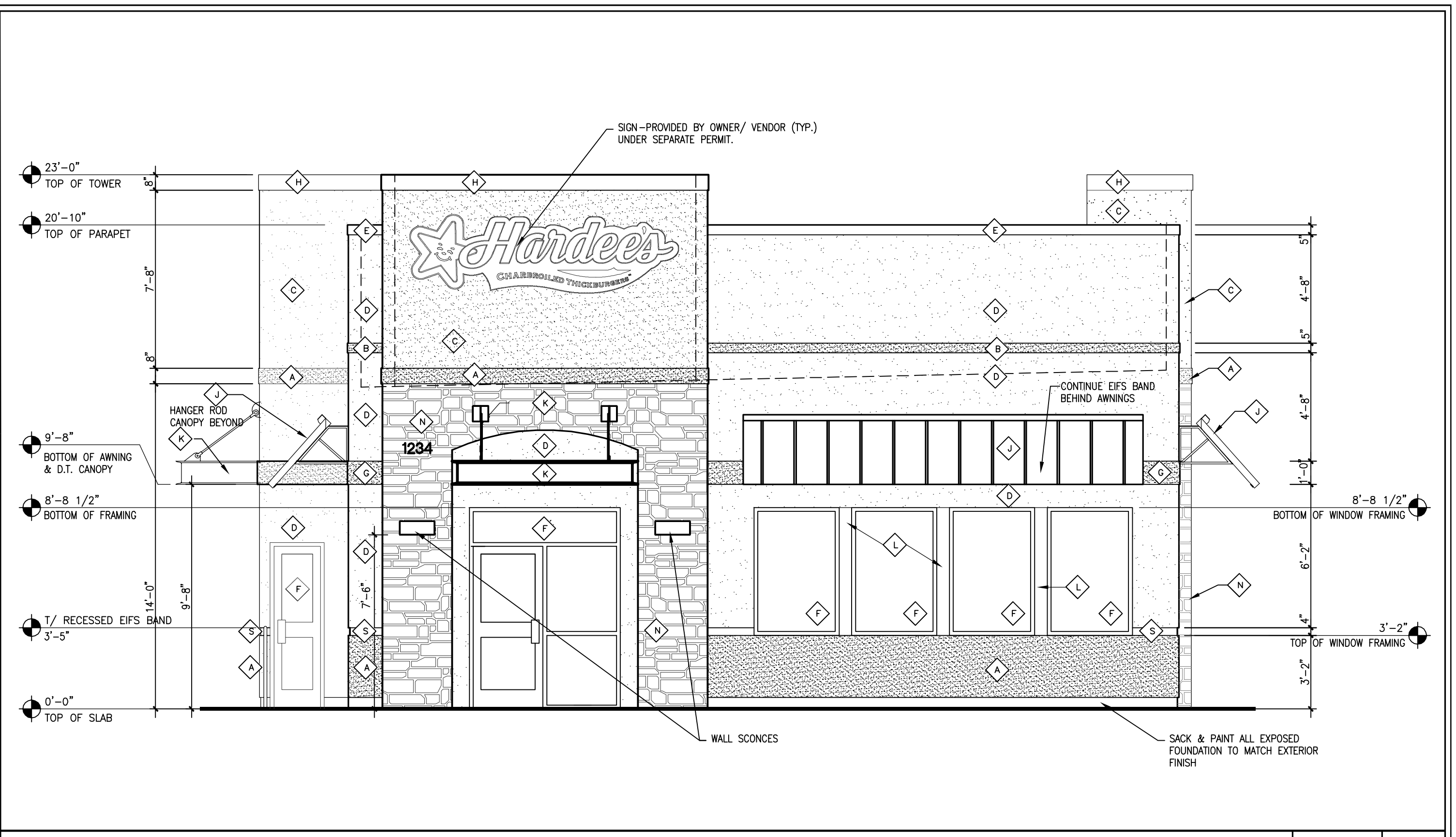
GARBAGE ENCLOSURE REAR SCALE: 1/4"=1'-0" 5



GARBAGE ENCLOSURE SIDE SCALE: 3/16"=1'-0" 10



GARBAGE ENCLOSURE FRONT SCALE: 3/16"=1'-0" 6



FRONT ELEVATION SCALE: 3/8"=1'-0" 2

ELEVATION	FACADE SQFT.	SIGN SQFT.	SIGN PERCENT
FRONT ELEVATION	887 SQFT.	40 SQFT.	2.5%
RIGHT ELEVATION	1459 SQFT.	40 SQFT.	2.7%
LEFT ELEVATION	1459 SQFT.	40 SQFT.	2.7%

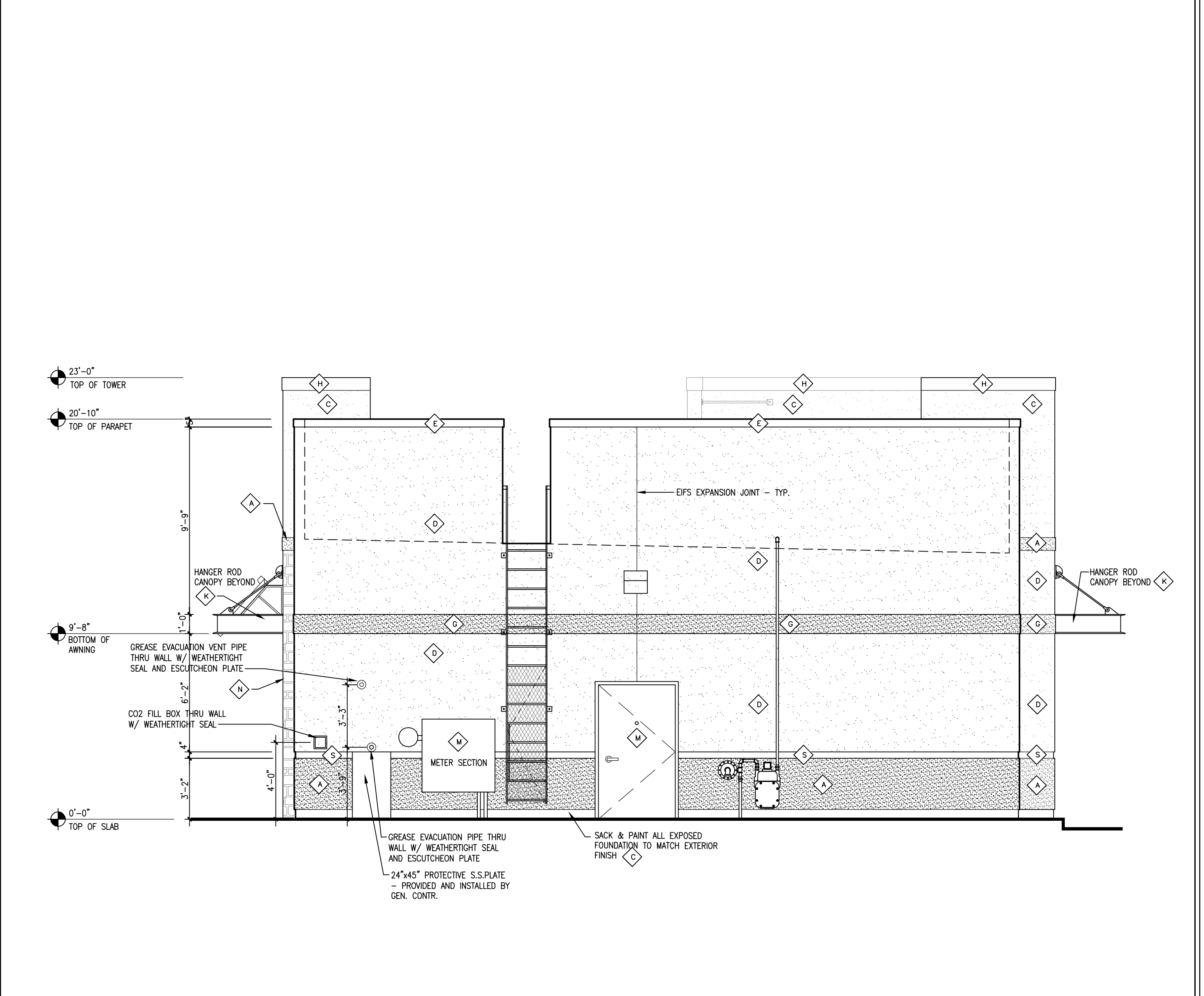
SIGN PERCENTAGE OF BUILDING SCALE: 3/8"=1'-0" 11

SYMBOL	MATERIAL	DESCRIPTION
A	EIFS TRIM BAND	2 1/4" THICK DRAINABLE EIFS SYSTEM BAND - SANDPEBBLE FINE FINISH DRYVIT COLOR: SW 7020 BLACK FOX
B	EIFS TRIM BAND	2 1/4" THICK DRAINABLE EIFS SYSTEM BAND - SANDPEBBLE FINE FINISH DRYVIT COLOR: SW 7020 BLACK FOX
C	EIFS	1 1/2" THICK DRAINABLE EIFS SYSTEM - SANDPEBBLE FINE FINISH DRYVIT COLOR: SW 7018 DOVE TAIL
D	EIFS	1 1/2" THICK DRAINABLE EIFS SYSTEM - SANDPEBBLE FINE FINISH DRYVIT COLOR: SW 7037 BALANCED BEIGE
E	PARAPET CAP	5" 22 GAUGE GALVANIZED STEEL TRIM BY CENTRIA. BRILLIANT SERIES COLOR BLACK SATIN ENAMEL SEE DETAIL 5/A15
F	DOOR AND WINDOW FRAMES	ALUMINUM - CLEAR ANODIZED ALUMINUM w/ 1" CLEAR INSULATED GLAZING.
G	EIFS TRIM BAND	2 1/4" THICK DRAINABLE EIFS SYSTEM BAND - SANDPEBBLE FINE FINISH DRYVIT COLOR: SW 7037 BALANCED BEIGE
H	PARAPET CAP	8" 22 GAUGE GALVANIZED STEEL TRIM BY CENTRIA. BRILLIANT SERIES COLOR #9970 CARMINE SATIN ENAMEL. SEE DETAIL 16/A15.
J	AWNING	AWNING AND FRAME TO MATCH PANTONE RED #193C
K	CANOPY	STEEL CANOPY W/ SOLID SKINED TOP - PROVIDED AND INSTALLED BY AWNING MFG. LOCATED ABOVE ENTRY WAYS AND DRIVE THRU WINDOW. COLOR: SHERWIN WILLIAMS SATIN ENAMEL #SW6258 "TRICORN BLACK"
L	EXTERIOR COLUMN WRAP	24 GAUGE ALUMINUM - CLEAR ANODIZED ALUMINUM TO MATCH STOREFRONT FRAMING.
M	KITCHEN ACCESS DOOR	PAINTED INSULATED METAL DOOR WITH HOLLOW METAL FRAME COLOR: SHERWIN WILLIAMS SATIN ENAMEL #SW 7020 BLACK FOX.
N	"FAUX" STONE VENEER	CORONADO STONE CO. "HONEY LEDGESTONE" COLOR: CARMEL MOUNTAIN. MORTAR TO BE PARAGON PRE-BLENDED TYPE "S". READY TO MIX OR EQUAL
P	DECORATIVE STAR	1 1/2" DRAINABLE EIFS SYSTEM W/ 1/2" "V" GROOVE TO CREATE EACH STAR - SANDPEBBLE FINE FINISH - DRYVIT COLOR: MATCH SW 7018 DOVE TAIL GRAY - SEE DETAIL 8/A5 FOR FABRICATION DIMENSIONS
Q	DECORATIVE STAR	1 1/2" DRAINABLE EIFS SYSTEM W/ 1/2" "V" GROOVE TO CREATE EACH STAR - SANDPEBBLE FINE FINISH - DRYVIT COLOR: MATCH SW 7037 BALANCED BEIGE. SEE SHEET DETAIL 8/A5 FOR FABRICATION DIMENSIONS
S	RECESSED EIFS BAND	RECESSED EIFS BAND COLOR: #SW 7020 BLACK FOX
T	PAINT	PAINT CMU TO MATCH DRYVIT COLOR: SW 7018 DOVE TAIL
U	PAINT	DUMPSTER DOORS, HARDWARE AND INSIDE DUMPSTER ENCLOSURE TO BE PAINTED WITH BENJAMIN MOORE ALKYD DTM M24-80 LOW GLOSS BLACK. SUBSTITUTION IS SHERWIN WILLIAMS INDUSTRIAL ENAMEL-LOW GLOSS BLACK. PAINT METAL DOORS, FRAMES ECT. BLACK. GATES TO BE PAINTED W/ (3) COATS PAINT OVER (1) COAT PRIMER.
V	PAINT	1 1/2" DRAINABLE EIFS SYSTEM - SAND PEBBLE FINE FINISH - DRYVIT COLOR SW 7018 DOVE TAIL
W	PAINT	WOOD FASCIA - PAINT SW 7018 DOVE TAIL
X	PAINT	METAL EDGE FLASHING - PAINT SW 7018 DOVE TAIL

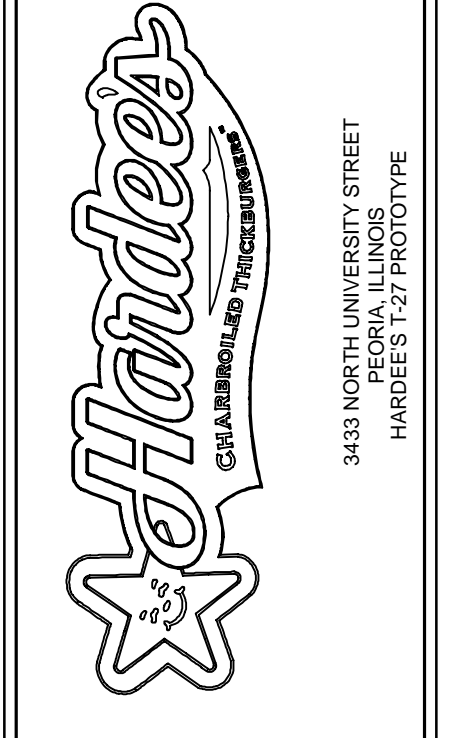
NOTES:
1. PREPARE ALL SURFACES TO BE PAINTED AS PER MANUFACTURERS RECOMMENDATIONS

NOTES SCALE: 1/4"=1'-0" 12

EXTERIOR FINISH SCHEDULE SCALE: 1/4"=1'-0" 8



REAR ELEVATION SCALE: 1/4"=1'-0" 4



NO.	DATE	DESCRIPTION

DRAWN BY	CHECKED BY #1	CHECKED BY #2	APPROVED BY