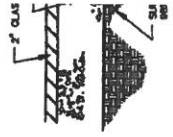
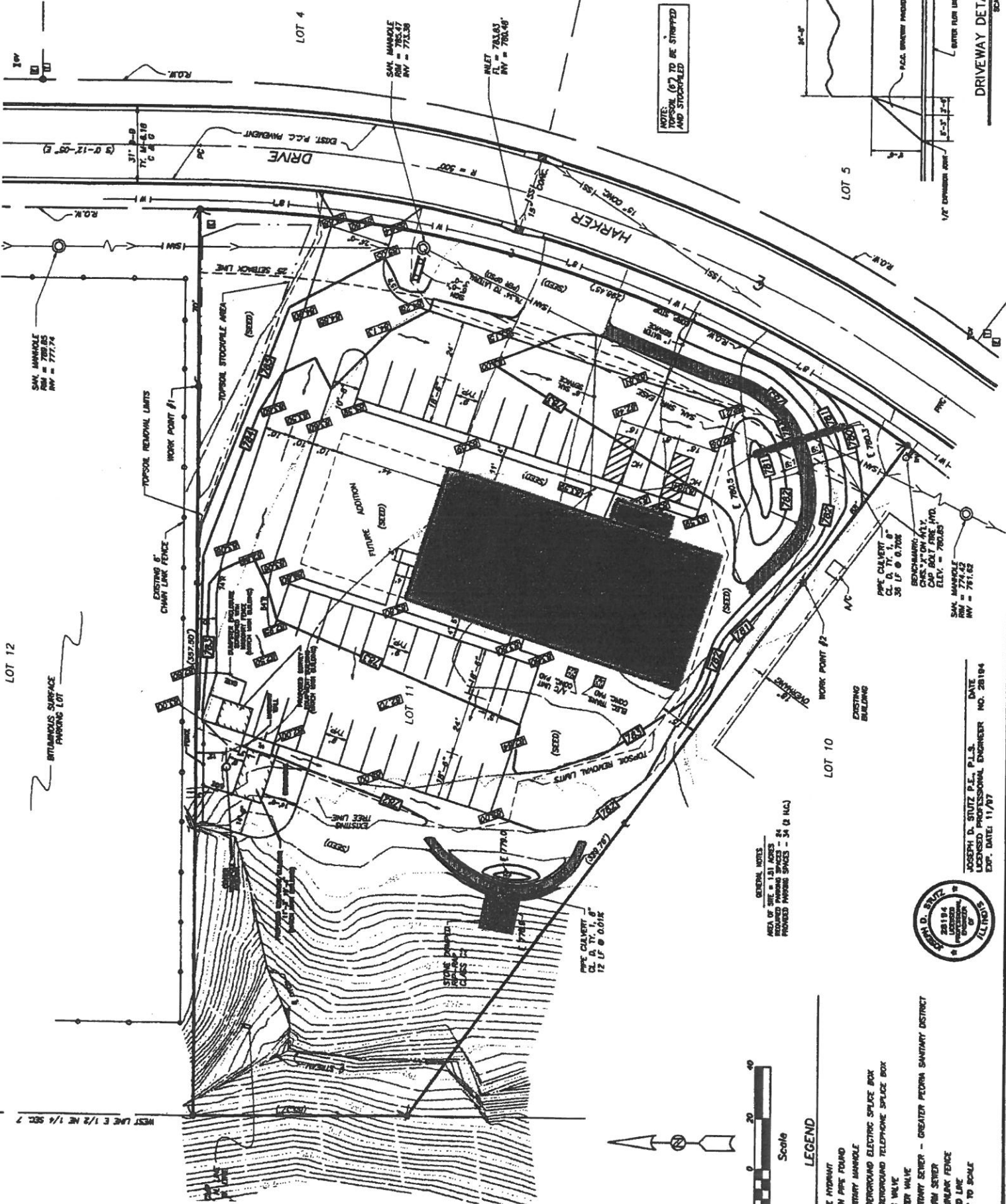


| IN | TITLE |
|-------|-------|
| SHEET | |
| 1 | SITE |
| 2 | FOUN |
| 3 | STRU |
| 4 | MISC |
| 5 | FIRST |
| 6 | FRON |
| 7 | LEFT |
| 8 | ELEC |
| 9 | HEAT |
| 10 | PLUM |

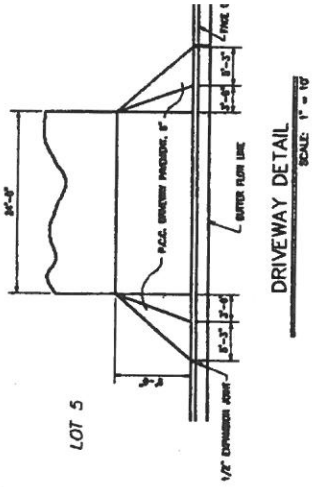


PAI

PAVEMENT



NOTES:
TOPSOIL (6") TO BE STRIPPED
AND STOCKPILED



LOT 12

BITUMINOUS SURFACE
PARKING LOT

GENERAL NOTES
AREA OF SITE = 1.51 ACRES
REQUIRED PARKING SPACES = 24 (8 H.C.)
PROVIDED PARKING SPACES = 34 (8 H.C.)



JOSEPH D. STUTZ P.E., P.L.S.
LICENSED PROFESSIONAL ENGINEER NO. 28194
DATE
EXP. DATE 11/97



LEGEND

- 1/2" HYDRANT
- 24" PIPE FOUND
- UTILITY MANHOLE
- BEHINDGROUND ELECTRIC SPUR BOX
- BEHINDGROUND TELEPHONE SPUR BOX
- 6" VALVE
- 12" VALVE
- UTILITY CENTER - GREATER FLORIDA SANITARY DISTRICT
- DRM CENTER
- UTILITY FENCE
- ED LINE
- IF TO SCALE

