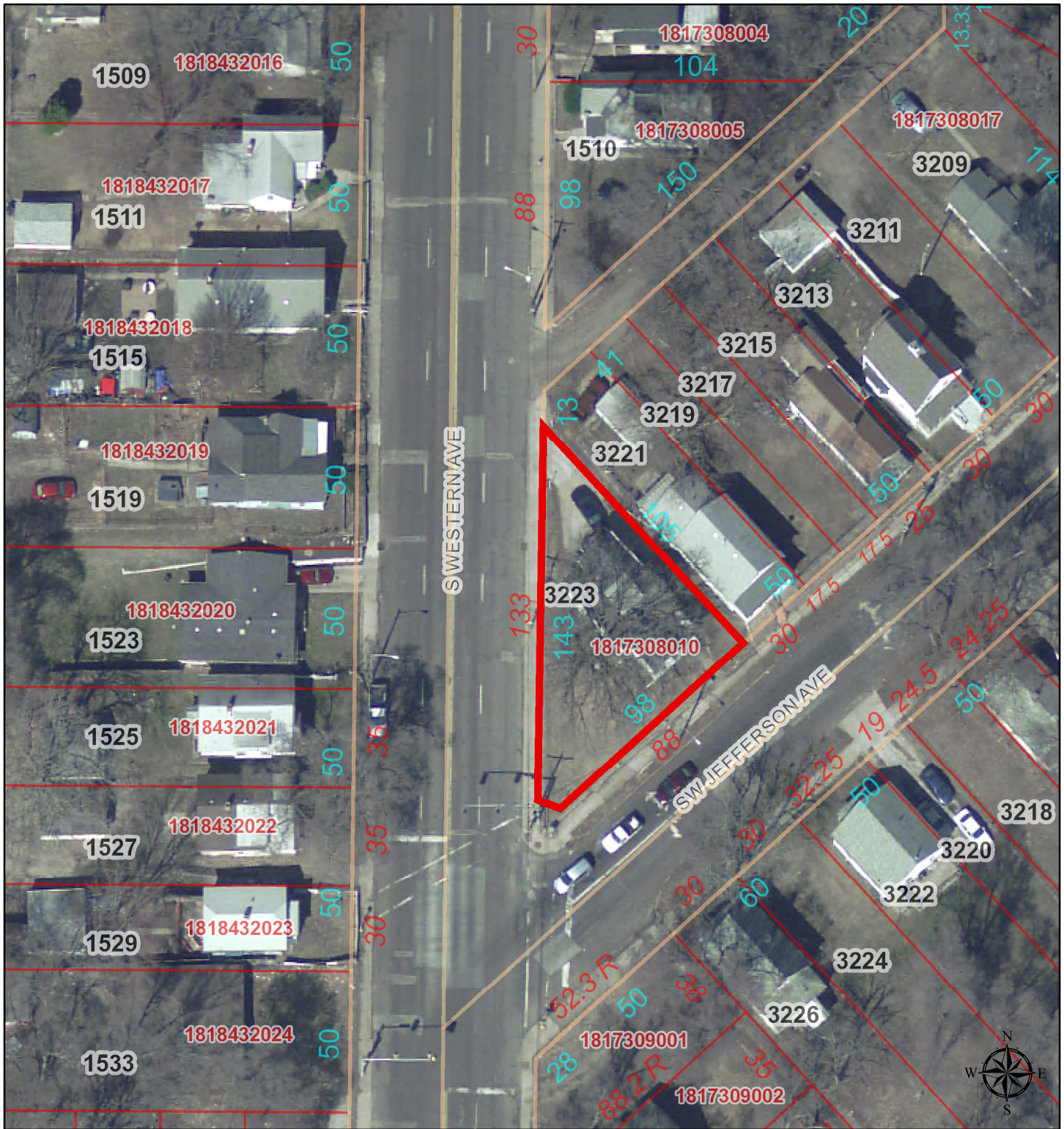
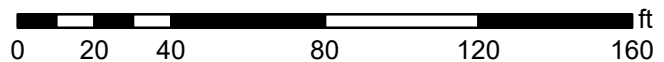


3223 SW Jefferson Avenue



1 inch = 50 feet



Disclaimer: Data is provided 'as is' without warranty or any representation of accuracy, timeliness or completeness. The burden for determining fitness for, or the appropriateness for use, rests solely on the requester. The requester acknowledges and accepts the limitations of the Data, including the fact that the Data is in a constant state of maintenance. This website is NOT intended to be used for legal litigation or boundary disputes and is informational only. -Peoria County GIS Division

County of Peoria, Tri-County Regional Planning Commission, Kucera International, Inc. County of Peoria, IL and Merrick & Company

