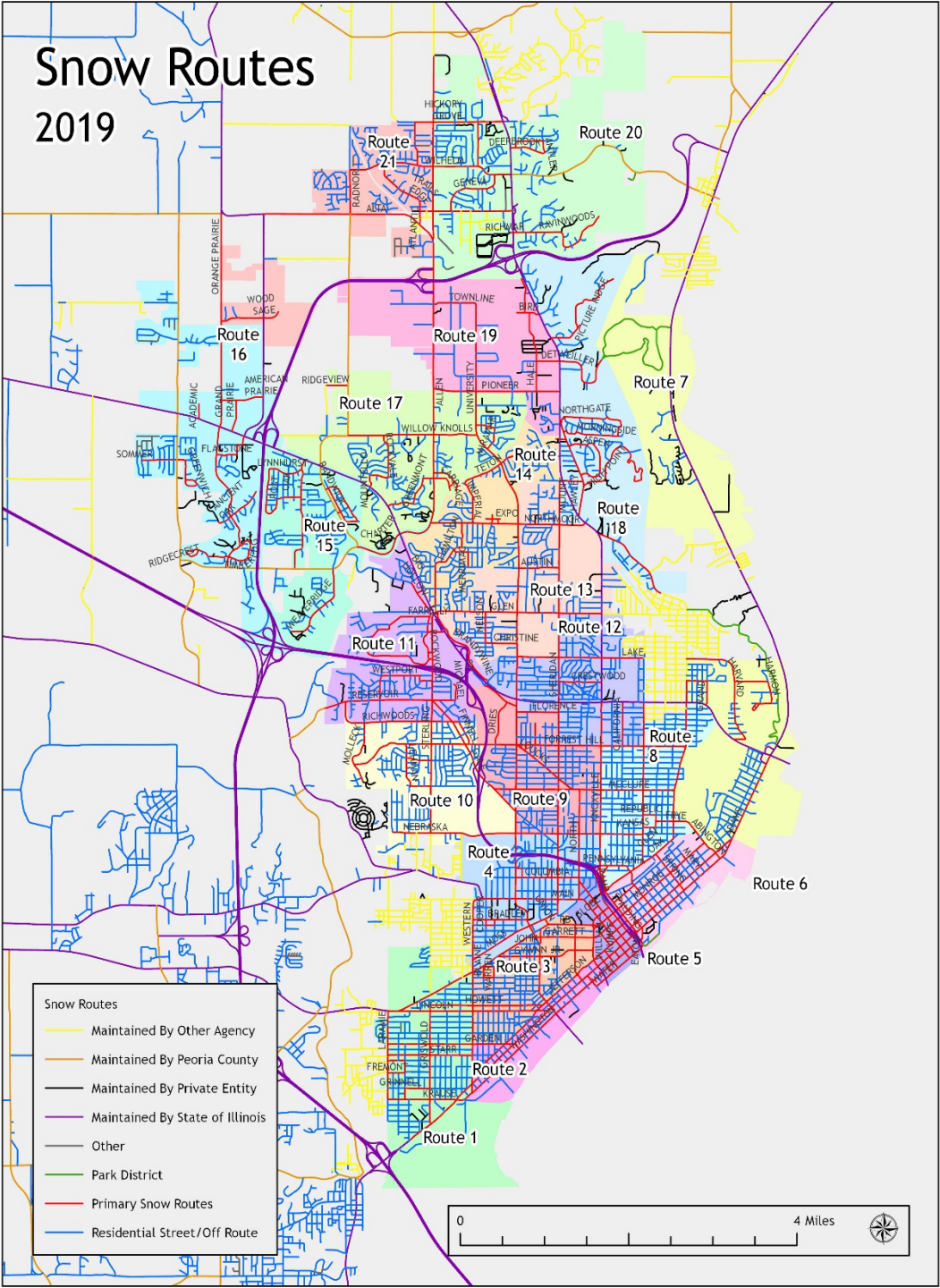




# ***2019-2020 SNOW REMOVAL PRESENTATION***

**City of Peoria Public Works Department  
September 24, 2019**

# City of Peoria 2019 Snow Routes (#1-21)





# Current Operations

---

- Winter Season Staffing
- Snow Route System
- Equipment Inventory
- Parking
- Sidewalk Snow Removal Ordinance



# Winter Season Staffing



- **Staffing**

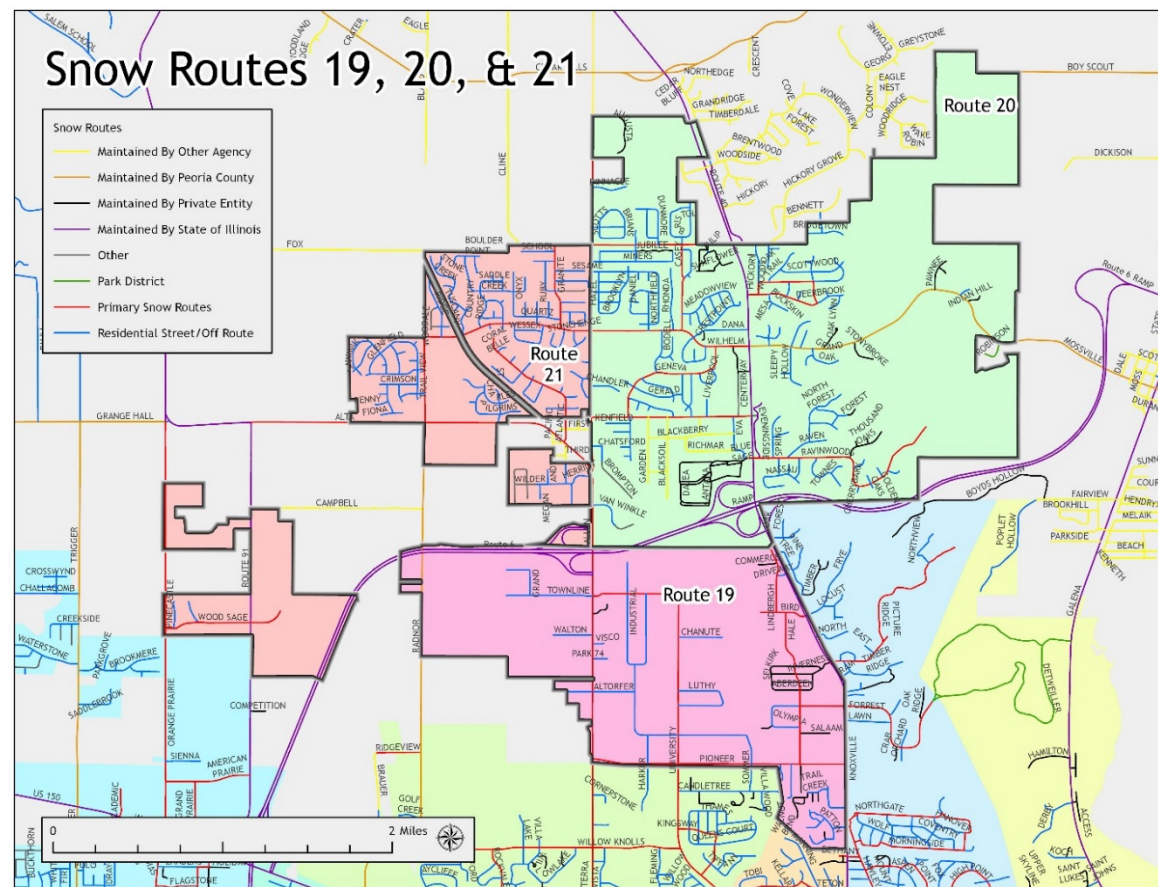
- 37 permanent maintenance employees
- 22 temporary employees





# Snow Route System

- **Priority Route System**
- Previously consisted of 20 snow routes (478 center line miles)
  - Designated Hill Routes
  - (8) Tandem Plow Routes
  - Around the clock operations
    - Two 12-hour shifts implemented at 2" predicted
    - November 1<sup>st</sup> to March 31<sup>st</sup>
- As of 2019/2020, Route 21 created
  - No additional personnel
  - No additional equipment to our existing fleet





# Snow Route System

---

**Goal:** Remove all snow on all streets **within 24 hours** *after snow fall has ended* when accumulation is greater than 2 inches but less than 6 inches; **within 36 hours** when accumulation is 6" or more.

## ○ **Primary routed streets**

- Pre-treat (anti-icing) with brine solution only on hills, overpasses and hazardous roadways to help keep snow and ice from bonding to pavement.
- Salt treatment (de-icing) to break the bond or keep snow/ice in a condition that allows snow pack to be plowed.
- Plow



# Snow Route Removal—Timing

**Greater than 2 inches, but less than 6 inches. Removal on all streets within 24 hours *after snow has ended.***

**Accumulations of 6 inches or more, removal within 36 hours *after snow has ended.***





# Snow Route System

---

## ○ Residential Streets

- Do not receive salt applications except under extreme conditions.
- Plow at 2 inches of accumulation and after completing primary streets.
- No bare pavement policy on residential streets.

## ○ Alleys — 80 miles

- Plow when snow accumulation reaches 5"
- Pass-through only
- No salt





# Equipment Inventory

- 21 salt/plow trucks
- 4 trucks with wing plows
- Various support equipment





# Equipment Inventory

Brine Machine: For producing liquid brine solution in-house – at less than 5 cents per gallon – which is efficient to 20 degrees.



For applications lower than 20 degrees, Calcium Chloride is the most effective.





# Equipment Inventory

- Brine Applicator used on hills, overpasses and hazardous roadways.
- Brine storage tank holds 5,500 gallons
- Calcium Chloride storage tank holds 5,500 gallons





# Equipment Inventory

Industrial Snow Blower:  
moves up to 1800 tons per  
hour.

- Can load a tractor trailer in less than 30 seconds.
- Utilized to open roads that are closed due to drifting.





# Future Considerations

---

- **PRE-STORM**
  - Brining all primary streets
- **POST-STORM**
  - Recycling salt wash





# Parking

- **Emergency Snow Routes**
  - Signs are posted on Emergency Snow Routes only
  - No Parking is enacted when accumulation reaches 2" or more
  - Remains in effect for a full 48 hours
  - \$50 dollars (current fine)
    - \$75 after 7 days
    - \$100 after 30 days
  - Tickets can be reissued every 24 hours



Primary routed streets



Downtown business district



# Parking

- **City-Wide No Parking Ban**
  - Put into effect by our City Manager or his designee
  - Remains in effect until terminated
  - May be utilized for a specific area or the entire City
  - Parking will be prohibited on:
    - Even-side addresses during even days of the month
    - Odd-side addresses during odd days of the month
  - 3 hours' notice for motorists to move cars
  - Fine — \$50







# Commercial Sidewalk Snow Removal

---





# Sidewalk Snow Removal Ordinance

---

- **Sec. 26-251** — All commercial property owners are required to remove snow from public sidewalks adjacent to their property:
- 4' wide path must be cleared within **24 hours for less than 6 inches (<6")** and **within 36 hours for more than 6 inches (>6")**.
- Noncompliance could result in a **civil penalty of \$50** for sidewalks less than 200 linear feet in length, or **\$100** for sidewalks more than 200 feet.
- The City may **remove the snow or ice** on sidewalks around private property **when the owner fails to comply** within the designated time period, **charging the cost to the owner.**



# Commercial Sidewalk Snow Removal

---

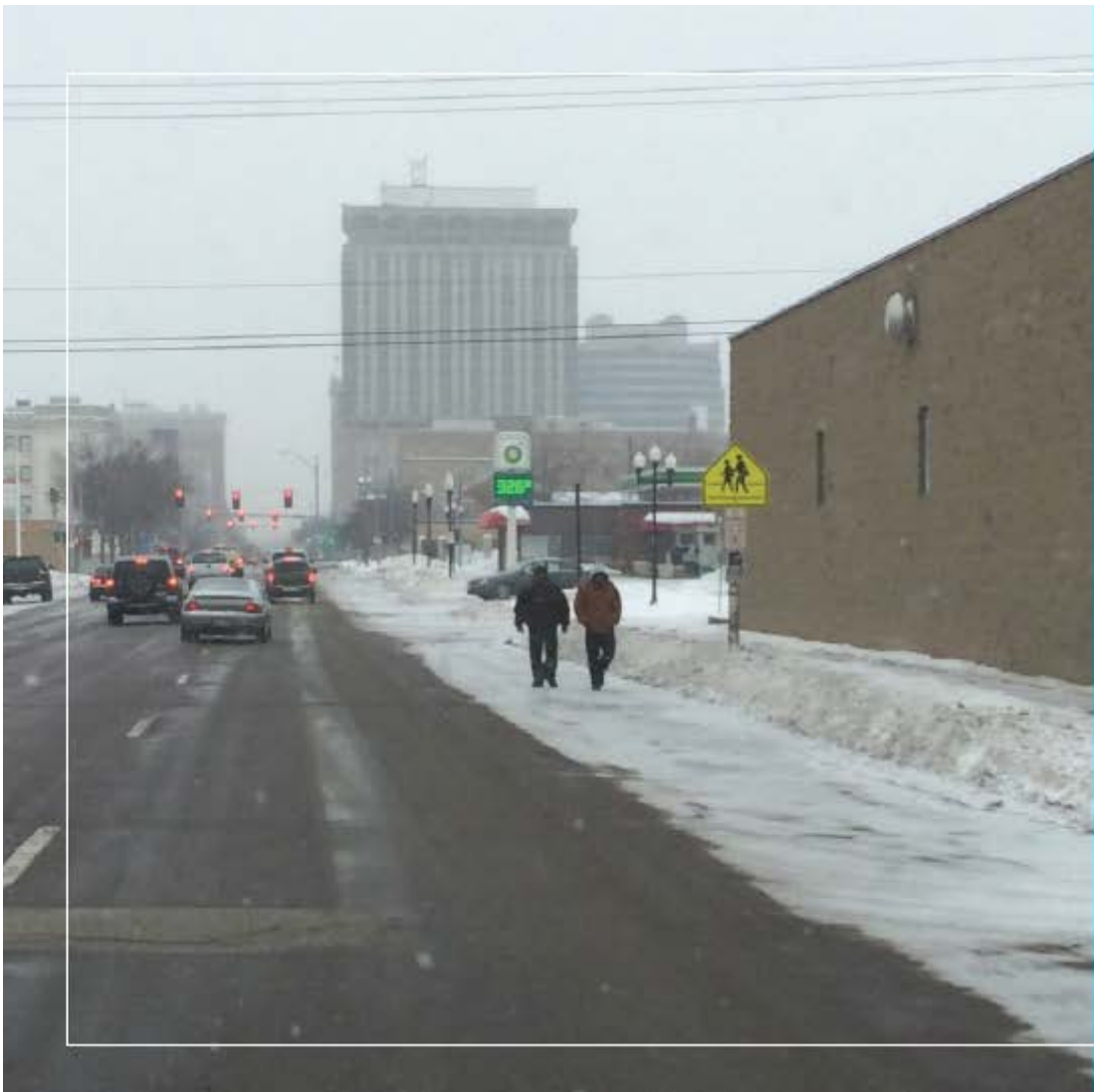
**Commercial property owners** are expected to comply with the Ordinance.

- Commercial property owners include: *All businesses, schools, churches and hospitals.*
- Snow clearing should be part of basic business operating plans.
- **GOAL** - to ensure our community is safe and walkable.





# Postcard



## CLEAR YOUR SIDEWALKS & KEEP OUR FEET *out of the* STREET



**THIS IS A FRIENDLY REMINDER** that city ordinance requires all commercial property owners to remove snow within 24 hours after snow stops falling for accumulations less than six inches, and within 36 hours after six or more inches as measured by the National Weather Service.

Snow must be removed from adjacent, public sidewalks to a minimum of four feet wide to accommodate wheelchairs, strollers, and adults with children in hand. Non-compliance could result in penalties.

**Please consult city ordinance 17268, Sec. 26-251 or contact City of Peoria - Public Works for questions and concerns.**





# Questions/Comments?

---



**THANK YOU!**