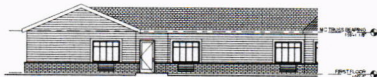


A1 01 COMMONS/MEMORY CARE - SOUTH
A400 1/8" = 1'-0"



B1 21 MEMORY CARE - SOUTHEAST 2
A400 1/8" = 1'-0"



B3 20 MEMORY CARE - NORTHWEST 2
A400 1/8" = 1'-0"



B4 19 MEMORY CARE - NORTH
A400 1/8" = 1'-0"



C1 18 MEMORY CARE - EAST
A400 1/8" = 1'-0"



C3 17 MEMORY CARE - SOUTHEAST 1
A400 1/8" = 1'-0"



D1 16 MEMORY CARE - NORTHEAST
A400 1/8" = 1'-0"



E1 15 MEMORY CARE - NORTHWEST
A400 1/8" = 1'-0"

SUMMIT SMITH
ARCHITECTS
Flooring, San Francisco
4717 West Washington Blvd
Suite 300
Menlo Park, CA 94025
Phone: 650-324-1818
Fax: 650-324-1112
Website: www.summit-smith.com

CSM
CONSTRUCTION SERVICES
888 E. Wilson Road
P.O. Box 100
Phone: 800-224-2000
Fax: 815-838-2000
Website: www.csmcs.com

pra
PLANNET BANCORP
ARCHITECTS, LLP
200 South Water Street
Menasha, WI 53233
Phone: 414-334-3000
Fax: 414-334-3000
Website: www.pra.com

Wood Sage Road Assisted Living/Memory Care
Peoria, IL

Project

Reference: **Revisions**
Date: 8/1/2015
1 Sheet 2015
PROGRESS SET

Sheet Name:
EXTERIOR
ELEVATIONS

Sheet Number:

A400

SUMMIT SMITH
 ARCHITECTS, INC.
 677 West Washington Street
 Suite 200
 Milwaukee, WI 53234
 Phone: 414-661-7100
 Fax: 414-661-8112
 Website: www.summit-smith.com

CSMITH
 CONSTRUCTION SERVICES
 888 E. Johnson Street
 P.O. Box 16
 Milwaukee, WI 53204
 Phone: 414-224-2000
 Fax: 414-224-2000
 Website: www.csmith.com

pra
 SUMMIT SMITH ARCHITECTS, LP
 208 South Weber Street
 Milwaukee, WI 53204
 Phone: 414-224-2000
 Fax: 414-224-2000
 Website: www.pra.com

Wood Sage Road Assisted Living/Memory Care
 Peoria, IL

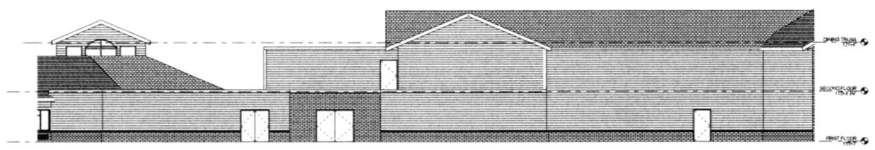
Project

Issued For
 Date & Issued For
 1 Sept 2015
 PROGRESS SET

Sheet Name
 EXTERIOR ELEVATIONS

Sheet Number

A401



A1 14 COMMONS - NORTH
 A401 1/8" = 1'-0"

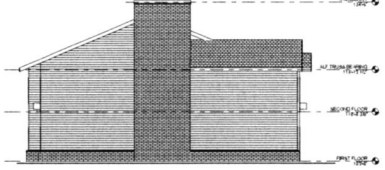


B1 13 COMMONS - WEST
 A401 1/8" = 1'-0"

B3 12 ALF - NORTHEAST
 A401 1/8" = 1'-0"



C1 11 ALF - NORTHWEST 2
 A401 1/8" = 1'-0"



C3 10 ALF - SOUTHWEST 2
 A401 1/8" = 1'-0"



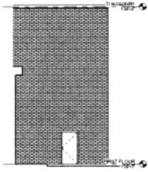
D1 09 ALF - SOUTHWEST 2
 A401 1/8" = 1'-0"



D4 08 ALF - SOUTHWEST
 A401 1/8" = 1'-0"



E1 07 ALF - NORTHWEST
 A401 1/8" = 1'-0"



E3 06 ALF - EAST
 A401 1/8" = 1'-0"



E4 05 ALF - NORTH
 A401 1/8" = 1'-0"



A1 04 ALF - WEST
1/8" = 1'-0"



B1 03 ALF SOUTH
1/8" = 1'-0"



C1 02 ALF - SOUTHEAST
1/8" = 1'-0"



E1 OVERALL SOUTH ELEVATION
1/8" = 1'-0"

SUMMIT SMITH
ARCHITECTURAL ASSOCIATES
ARCHITECTS

6737 West Washington Street
Suite 200
Moline, IL 61704
Phone: 309-438-8110
Fax: 309-438-8112
Website: www.summit-smith.com

CSMITH
CONSTRUCTION SERVICES

888 E. Johnson Street
Moline, IL 61704
Phone: 309-438-3500
Fax: 309-438-3510
Website: www.csmith.com

pra
PRAJITTA RANSON
ARCHITECTS, LLP

206 South Water Street
Moline, IL 61704
Phone: 309-438-3500
Fax: 309-438-3510
Website: www.pra.com

Project
Wood Sage Road Assisted Living/Memory Care
Preston, IL

Issuance / Revisions
Date: As Issued For
11/04/2015
PROGRESS SET

Sheet Name
EXTERIOR
ELEVATIONS

Sheet Number

A402